

## WT615

### *eBeam Interactive Software Setup Guide*



1. What You Can Do with ————— ● 1  
eBeam Interactive

2. Operating Environment ————— ● 2

3. Connection between a Per- ————— ● 3  
sonal Computer and Projector

4. Installation ————— ● 4

5. Startup and Termination ————— ● 5

6. Restrictions ————— ● 6

# Introduction

Thank you for purchasing the NEC projector WT615 (hereafter referred to as the “WT615” or “projector”).

WT615 is equipped with the eBeam electronic capture system which allows you to operate the projector using the included electronic pen.

This document explains how to use the eBeam Interactive digital presentation software included with the WT615 projector.

Hereafter “eBeam Interactive digital presentation software” is referred to as “eBeam Interactive” in this guide.

In addition to this document, see the following manuals:

- (1) How to use the electronic pen ..... WT615/WT610 Setup Guide
- (2) How to use the eBeam Interactive software ..... “Help” for eBeam Interactive
- (3) How to configure the Wired/Wireless LAN settings ..... WT615/WT610 Wired and Wireless Network Setup Guide
- (4) Image Express Utility 2.0 ..... User Supportware User’s Guide (PDF)

**The eBeam Interactive software runs on Windows Vista, Windows XP or Windows 2000.**

## NOTES

- (1) The contents of this guide may not be reprinted in part or whole without permission.
- (2) The contents of this guide are subject to change without notice.
- (3) Great care has been taken in the preparation of this guide; however, should you notice any questionable points, errors or omissions, please contact us.
- (4) Notwithstanding article (3), NEC will not be responsible for any claims on loss of profit or other matters deemed to result from using the Projector.
- (5) Guides with incorrect collating or missing pages will be replaced.

# Contents

Introduction ..... Inside cover

Contents ..... 1

**1. What You Can Do with eBeam Interactive ..... 2**

**2. Operating Environment ..... 3**

    2-1. Supported Projector ..... 3

    2-2. Operating Environment ..... 3

**3. Connection between a Personal Computer and Projector ..... 4**

    3-1. Connection through LAN ..... 4

    3-2. Connection through an RGB/VGA Signal Cable and USB Cable ..... 4

**4. Installation ..... 5**

    4-1. Installation ..... 5

    4-2. Uninstalling ..... 5

**5. Startup and Termination ..... 6**

    5-1. Startup of eBeam Interactive ..... 6

    5-2. Termination of eBeam Interactive ..... 10

**6. Restrictions ..... 11**

    6-1. Additional Functions ..... 11

    6-2. Unavailable Functions ..... 11

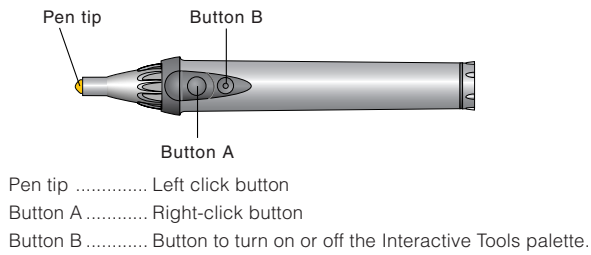
    6-3. Note ..... 11

About the Downloading Service ..... 12

For Information ..... 12

# 1. What You Can Do with eBeam Interactive

- Like a USB mouse, using the electronic pen enables you to operate the personal computer.  
Furthermore, assuming that the projector screen as a white board, any characters and figures can be drawn on it using the electronic pen.



**Note**

Button A or B must be pressed and hold for a minimum of 0.5 seconds.

- For the operation, touch the Interactive Tools palette on the projector screen with the electronic pen.



- The characters and figures drawn on the projector screen can be saved in the various formats of image files.
- While making the presentations by calling PowerPoint slides, characters and figures can be added using the electronic pen, and the added information can be saved.
- The personal computer and projector may be connected with the (wired/wireless) LAN, or a USB port.

**Note**

The WT615 cannot use any COM port or Bluetooth.

- Connection of more than one personal computer to the WT615 enables these computers to share the projected image. This function is called “meeting” in the eBeam Interactive software.

## 2. Operating Environment

### 2-1. Supported Projector

eBeam Interactive supports the following NEC projector (as of May 2007)

WT Series	WT615
-----------	-------

### 2-2. Operating Environment

This section describes the conditions used when the personal computer and projector are connected through an RGB/VGA signal cable and a USB cable.  
For the conditions used under the (wired/wireless) LAN environment, see the Wired and Wireless Network Setup Guide.

#### Important

No connection to COM port or Bluetooth is allowed.

Supported OS	Windows Vista (32-bit version) Home Basic Windows Vista (32-bit version) Home Premium Windows Vista (32-bit version) Business Windows Vista (32-bit version) Ultimate Windows Vista (32-bit version) Enterprise Windows XP HomeEdition Windows XP Professional Windows 2000 Professional
Supported hardware	IBM PC/AT compatible personal computers CD-ROM drive required for installation
CPU	Pentium III 500 MHz or higher (In case of Windows XP/2000) The hardware specifications recommended by Microsoft for Windows Vista should be satisfied.
Memory	Memory size necessary for OS
Connection between a Personal Computer and Projector	Connection through an RGB/VGA signal cable and USB cable
Resolution	SVGA or higher
Screen Colors	High Color (15bits*,16bits) (* 15bits for Windows XP/2000 only) True Color (24bits,32bits) •256 or fewer colors are not supported.

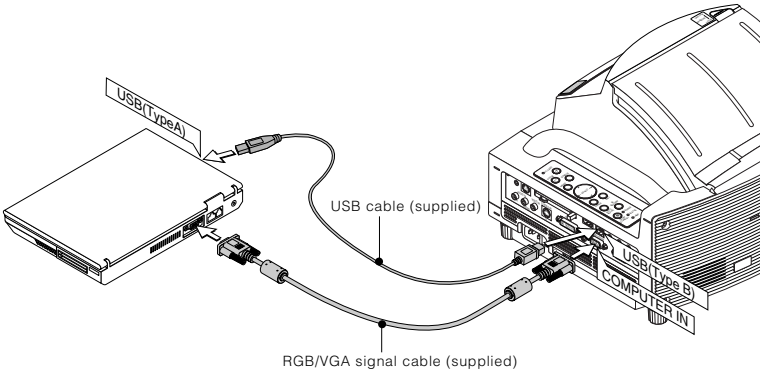
### 3. Connection between a Personal Computer and Projector

The personal computer and projector may be connected with the (wired/wireless) LAN, or a USB port.

#### 3-1. Connection through LAN

Referring to the Wired and Wireless Network Setup Guide, configure the LAN settings on the projector and personal computer.

#### 3-2. Connection through an RGB/VGA Signal Cable and USB Cable



**Note**

The WT615 cannot use any COM port or Bluetooth.

## 4. Installation

### 4-1. Installation

#### Important

- To use the eBeam Interactive in LAN connection, be sure to install “Image Express Utility 2.0”.  
Image Express Utility 2.0 is contained in the User Supportware CD-ROM attached to the WT615. For installation of Image Express Utility 2.0, refer to the User Supportware User’s Guide (PDF) contained in the User Supportware CD-ROM.
- When installing/uninstalling the software in Windows XP, you must log on as a user with “Computer Administrator” privileges.  
In case of Windows Vista, log on as user with “Administrator” privileges.  
In case of Windows 2000, log on as user with “Administrators” privileges.
- The following description applies to Windows XP.

- 1** Insert the User Supportware 2 Plus CD-ROM into the CD-ROM drive.  
The eBeam Interactive installer will start up, and the Setup window will be displayed.
- 2** Click [Next >]  
The “License Agreement” screen will be displayed.
- 3** After that, follow the instructions on the screen to continue the installation.

### 4-2. Uninstalling

The following procedure removes the eBeam Interactive from Windows.

- 1** Click [Control Panel (C)] in the start menu, and double-click [Add or Remove Programs].  
A list of programs currently installed will be displayed.
- 2** From the list of installed software, click “eBeam Interactive 1.0.x”.
- 3** Click [Change/Remove], on the right of the screen.  
Uninstallation of the program will begin.

# 5. Startup and Termination

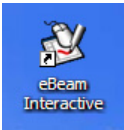
## 5-1. Startup of eBeam Interactive

### Important

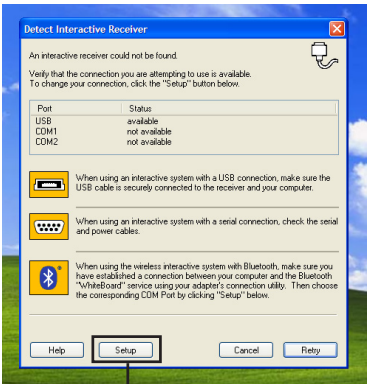
Before you use the electronic pen for the first time or when you have changed the position of the projector or the screen size, be sure to use [Pen Calibration] to calibrate the electronic pen and the screen.  
For details of [Pen Calibration], refer to “WT615/WT610 Setup Guide”.

### ■LAN connection

- 1 Turn on the power to the projector for which LAN has been set.
- 2 Double-click the “eBeam Interactive” icon on the desktop.



The “Detect Interactive Receiver” window will be displayed.

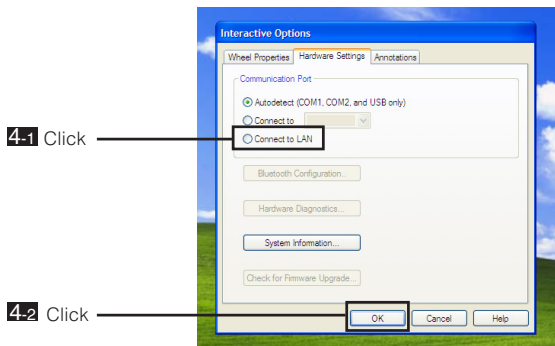


- 3 Click



**3** Click [Setup].

The “Interactive Options” window will be displayed.

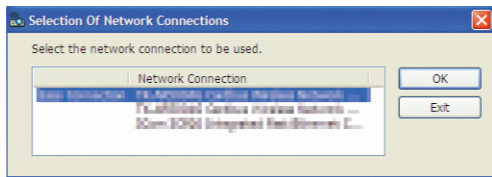


**4** Confirm that [Hardware Settings] tab is open, and click “Connect to LAN” and [OK].

The “Selection Of Network Connections” window will be displayed.

- A list of the network equipment connected to your personal computer will be displayed.
- If only one network device has been connected to your personal computer, the “Selection Of Network Connections” window will not be displayed.

**5** Select the network equipment that is to be used and click [OK].

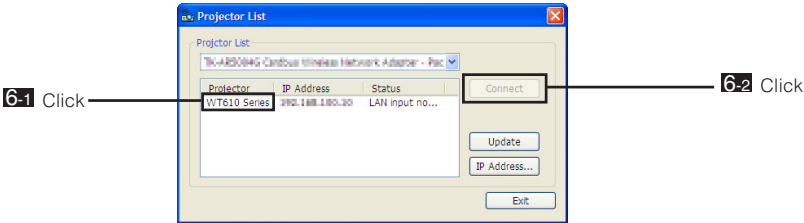


Select the network device displaying “Easy Connection” if the product LAN setting is for “Easy Connection.” This will call up the “Projector List” window.

## 5. Startup and Termination

### 6 Check the projector to connect and click [Connect].

If the desired projector is not shown on the list of projector names or the list hides the names, click [Update].



The screen of your personal computer will be projected from the projector.

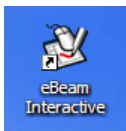
The Interactive Tools palette will be displayed on the screen.

At this time, the input signal of the projector will automatically change to "LAN".

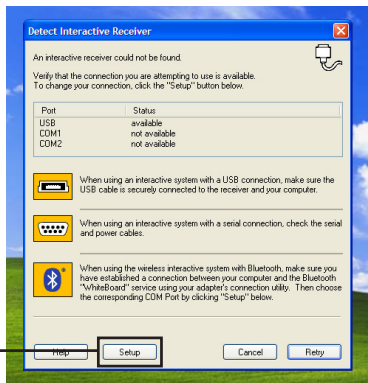


## ■ Connection through the RGB/VGA signal cable and USB cable

- 1** Turn on the projector with the RGB/VGA signal cable and USB cable connected.
- 2** Switch the projector input signal to “Computer”.  
The screen of your personal computer will be projected from the projector.
- 3** Double-click the “eBeam Interactive” icon on the desktop.



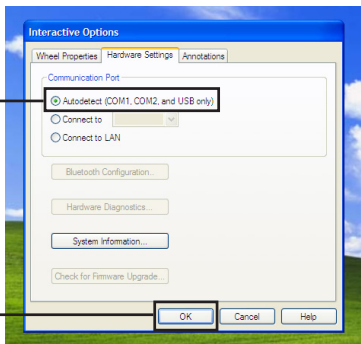
The “Detect Interactive Receiver” window will be displayed.



**4** Click

- 4** Click [Setup].

The “Interactive Options” window will be displayed.



**5-1** Click

**5-2** Click

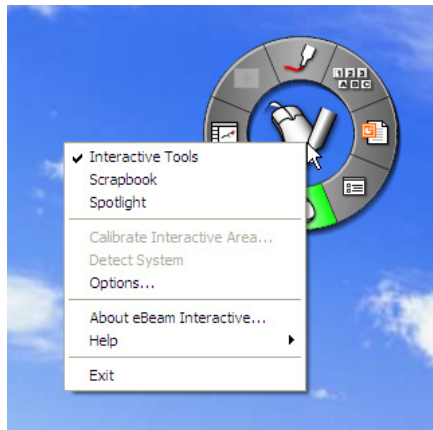
- 5 Confirm that [Hardware Settings] tab is open, and click “Autodetect (COM1,COM2, and USB only)” and [OK].

The Interactive Tools palette will be displayed on the screen.



### 5-2. Termination of eBeam Interactive

- 1 Move the mouse pointer onto the Interactive Tools palette, and right-click. The menu will be displayed.



- 2 Click [Exit].  
Exit eBeam Interactive.

## 6. Restrictions

This eBeam Interactive software has been developed for the personal computer to operate in connection to the WT615, and therefore, the description is partly different from the on-line help for eBeam Interactive software.

Note that some functions of eBeam Interactive software cannot be used in the WT615, and some functions (additional functions) are not described on the on-line help.

### 6-1. Additional Functions

The following function is added. This function is not described on the on-line help.

- “Interactive Options” window - [Hardware Settings] tab - “Connect to LAN”

### 6-2. Unavailable Functions

The following functions cannot be used.

- Connection using the COM port such as “COM1”
- “Interactive Options” window - [Hardware Settings] tab - “Bluetooth Configuration...”
- “Interactive Options” window - [Hardware Settings] tab - “Hardware Diagnostics...”
- “Interactive Options” window - [Hardware Settings] tab - “Check for Firmware Update...”
- “Interactive Options” window - [Software Updates] tab, and the taskbar “Options...” -> “Software Updates” tab
- “Calibrate Interactive Area ...” submenu to be displayed by right click on the task bar or on the Interactive Tools pallet.

### 6-3. Note

- The area surrounding the projected image is displayed in gray while the Desktop Annotation Interactive Tools palette is used. The drawing may be impossible in this area depending on your personal computer environment.
- In any multi-monitor Windows environment, WT615 must be used as a primary monitor since WT615 does not normally operate as a secondary monitor.
- If you changed a resolution or rotated the display on the tablet PC while annotating the desktop using the pen tool of Desktop Interactive Tools palette, repeat the resolution change or the rotation process again once the pen tool is ended, so that the drawing area will be updated.

continued on the following page.

- If you use the snapshot tool of Desktop Interactive Tools pallet after changing a resolution or rotating the display on the tablet PC, the capture operation does not normally work since the capture area is not updated. In that case, exit the application once and retry it.
- Be careful about the amount of available memory where scrapbook files are saved to in the “vector PDF file” format. If the available memory is insufficient, these files are not normally saved.
- eBeam Interactive dose not support the virtual screen.
- With Windows Vista, you cannot make any operation to the prompts displayed when the user account control (UAC) is enabled.
- With Windows Vista, some applications including On-Screen keyboard may not be operable. In this case, click the right button of the mouse at the shortcut icon for eBeam Interactive and select “Run as administrator”.

### **About the Downloading Service**

For update information on eBeam Interactive software refer to the NEC Projector’s support page (<http://www.nec-pj.com>).

### **For Information**

Visit: <http://www.nec-pj.com>

- IBM and PC/AT are registered trademarks of International Business Machines Corporation.
- Microsoft, Windows, and PowerPoint are registered trademarks or trademarks of Microsoft Corporation in the U.S. or other countries.
- eBeam and the eBeam enabled logo are trademarks of Luidia, Inc.
- Pentium is a trademark of Intel Corporation in the United States and other countries.
- Other manufacturer names and product names in this document are registered trademarks or trademarks of the respective companies.

