

Media Player

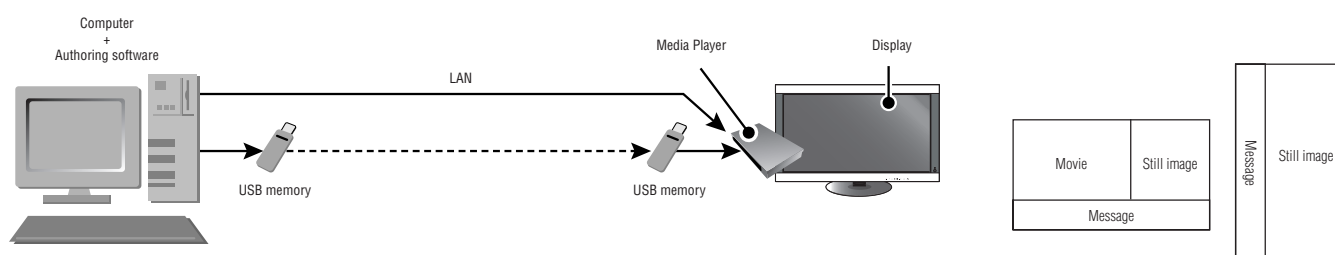
(MP-01)

User's Manual Ver.1.10

Introduction

•What is Media Player?

Media Player is a tool for showing programs created from the combination of graphics and sound contents on a display. Programs are created using the attached authoring software and distributed via LAN or USB memory.



•What is Authoring Software?

Layout setting

The desired layout can be set by combining movies, still images, and messages.

Scheduling function

This function displays the program at the designated time. You can set the daily program start and end time or the program start and end time for a particular day.

Distribution function

Program data is distributed via USB memory or to a maximum of 20 Media Players via LAN.

DECLARATION OF CONFORMITY

This device complies with Part 15 of FCC Rules. Operation is subject to the following two conditions. (1) This device may not cause harmful interference, and (2) this device must accept any interference received, including interference that may cause undesired operation.

U.S. Responsible Party:	NEC Display Solutions of America, Inc.
Address:	500 Park Boulevard, Suite 1100 Itasca, Illinois 60143
Tel. No.:	(630) 467-3000

Type of Product: Media Player
Equipment Classification: Class B Peripheral
Model: MP-01(L007KN)



*We hereby declare that the equipment specified above
conforms to the technical standards as specified in the FCC Rules.*

Canadian Department of Communications Compliance Statement

DOC: This Class B digital apparatus meets all requirements of the Canadian Interference-Causing Equipment Regulations.

C-UL: Bears the C-UL Mark and is in compliance with Canadian Safety Regulations according to CAN/CSA C22.2 No. 60950-1.

FCC Information

1. Use the attached specified cables with MP-01(L007KN) so as not to interfere with radio and television reception.
 - (1) Please use the supplied power cord or equivalent to ensure FCC compliance.
 - (2) Please use the supplied shielded video signal cable, DVI-D – DVI-D.
2. This equipment has been tested and found to comply with the limits for a Class B digital device, pursuant to part 15 of the FCC Rules. These limits are designed to provide reasonable protection against harmful interference in a residential installation. This equipment generates, uses, and can radiate radio frequency energy, and, if not installed and used in accordance with the instructions, may cause harmful interference to radio communications. However, there is no guarantee that interference will not occur in a particular installation. If this equipment does cause harmful interference to radio or television reception, which can be determined by turning the equipment off and on, the user is encouraged to try to correct the interference by one or more of the following measures:
 - Reorient or relocate the receiving antenna.
 - Increase the separation between the equipment and receiver.
 - Connect the equipment into an outlet on a circuit different from that to which the receiver is connected.
 - Consult your dealer or an experienced radio/TV technician for help.

If necessary, the user should contact the dealer or an experienced radio/television technician for additional suggestions.

The user may find the following booklet, prepared by the Federal Communications Commission, helpful: "How to Identify and Resolve Radio-TV Interference Problems." This booklet is available from the U.S. Government Printing Office, Washington, D.C., 20402, Stock No. 004-000-00345-4.

Important Information



WARNING



TO PREVENT FIRE OR SHOCK HAZARDS, DO NOT EXPOSE THIS UNIT TO RAIN OR MOISTURE. ALSO, DO NOT USE THIS UNIT'S POLARIZED PLUG WITH AN EXTENSION CORD RECEPTACLE OR OTHER OUTLETS UNLESS THE PRONGS CAN BE FULLY INSERTED.

REFRAIN FROM OPENING THE CABINET AS THERE ARE HIGH VOLTAGE COMPONENTS INSIDE. REFER SERVICING TO QUALIFIED SERVICE PERSONNEL.



CAUTION



CAUTION: TO REDUCE THE RISK OF ELECTRIC SHOCK, MAKE SURE POWER CORD IS UNPLUGGED FROM WALL SOCKET. TO FULLY DISENGAGE THE POWER TO THE UNIT, PLEASE DISCONNECT THE POWER CORD FROM THE AC OUTLET. DO NOT REMOVE COVER (OR BACK). NO USER SERVICEABLE PARTS INSIDE. REFER SERVICING TO QUALIFIED SERVICE PERSONNEL.

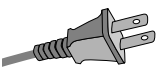
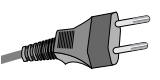
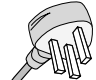
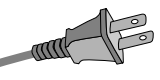



This symbol warns user that uninsulated voltage within the unit may have sufficient magnitude to cause electric shock. Therefore, it is dangerous to make any kind of contact with any part inside this unit.



This symbol alerts the user that important literature concerning the operation and maintenance of this unit has been included. Therefore, it should be read carefully in order to avoid any problems.

CAUTION: Please use the power cord provided with this Media Player in accordance with the table below. If a power cord is not supplied with this equipment, please contact your supplier. For all other cases, please use a power cord that matches the AC voltage of the power outlet and has been approved by and complies with the safety standard of your particular country.

Plug Type	North America	European Continental	U.K.	Chinese	Japanese
Plug Shape					
Country	U.S.A./Canada	EU (except U.K.)	U.K.	China	Japan
Voltage	120*	230	230	220	100

*When operating the MP-01(L007KN) Media Player with its AC 100-240V power supply, use a power supply cord that matches the power supply voltage of the AC power outlet being used.

NOTE: This product can only be serviced in the country where it was purchased.

Declaration

Declaration of the Manufacturer

We hereby certify that the Media Player MP-01 (L007KN) is in compliance with

Council Directive 2006/95/EC:
– EN 60950-1

Council Directive 2004/108/EC:
– EN 55022
– EN 61000-3-2
– EN 61000-3-3
– EN 55024

and marked with



NEC Display Solutions, Ltd.
4-13-23, Shibaura,
Minato-Ku
Tokyo 108-0023, Japan

Safety Precautions, Maintenance & Recommended Use

FOR OPTIMUM PERFORMANCE, PLEASE NOTE THE FOLLOWING WHEN SETTING UP AND USING THE MEDIA PLAYER:

- DO NOT OPEN THE MEDIA PLAYER. There are no user serviceable parts inside and opening or removing covers may expose you to dangerous shock hazards or other risks.

Refer all servicing to qualified service personnel.

- Do not spill any liquids into the cabinet or use your Media Player near water.
- Do not insert objects of any kind into the cabinet slots, as they may touch dangerous voltage points, which can be harmful or fatal or may cause electric shock, fire or equipment failure.
- Do not place any heavy objects on the power cord or AC adapter. Damage to the cord or AC adapter may cause shock or fire.
- Do not place this product on a sloping or unstable cart, stand or table, as the Media Player may fall, causing serious damage to the Media Player.
- The power supply cord you use must have been approved by and comply with the safety standards of your country. (Type H03VVH2-F 2x 0.75mm² should be used in Europe)
- In UK, use a BS-approved power cord with molded plug having a black (13A) fuse installed for use with this Media Player.
- Do not place any objects onto the Media Player and do not use the Media Player outdoors.
- Do not bend, crimp or otherwise damage the power cord.
- Do not use wet hands to connect or disconnect the power cord to an electrical socket. This may cause electric shock.
- Clean the plug periodically and check to make sure the plug and power cord are not damaged.
- Do not apply stress to the inlet (AC input side) of the AC adaptor.
- Do not wrap the AC adapter in cloth.
- When moving the Media Player, disconnect all cables. Moving the Media Player with cables connected may cause electric shock.
- Do not pull on the power cord to disconnect from power outlet as this may cause electric shock. Hold onto to the plug at the end of the power cord to disconnect.
- Do not cover vent on Media Player.
- Do not use Media Player in high temperature, humid, dusty, or oily areas.
- Do not drop or subject to shock.
- Do not place sideways, face down or upside down.
- Do not leave the Media Player in direct sunlight or near heating equipment.

Immediately unplug your Media Player from the wall outlet and refer servicing to qualified service personnel under the following conditions:

- When the power supply cord or plug is damaged.
- If liquid has been spilled, or objects have fallen into the Media Player.
- If the Media Player has been exposed to rain or water.
- If the Media Player has been dropped or the cabinet damaged.

Cleaning the Media Player

- Unplug the power supply.
- Gently wipe the cabinet with a soft cloth.
- To clean the cabinet, dampen the cloth with a neutral detergent and water, wipe the cabinet and follow with a dry cloth.

NOTE:

DO NOT clean with benzene thinner, alkaline detergent, alcoholic system detergent, glass cleaner, wax, polish cleaner, soap powder, or insecticide.

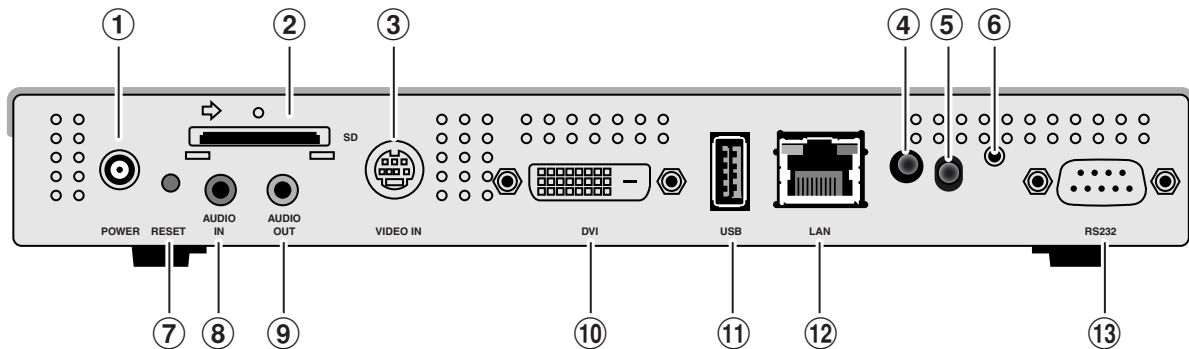
Rubber or vinyl should not be in contact with the cabinet for an extended period of time. These types of fluids and materials can cause the paint to deteriorate, crack or peel.

Intel and Intel Pentium are trademarks of Intel Corporation in the United States and other countries. The SD logo is a trademark. Microsoft®, MS, Windows®, PowerPoint®, Windows Media®, Internet Explorer® and the Internet Explorer® logo are registered trademarks or trademarks of the Microsoft Corporation in the United States and other countries. All other brands and product names are trademarks or registered trademarks of their respective owners.

Contents

- **Memory card**
- **Memory card cover**
- **Wireless remote control**
- **AA batteries x 2**
- **Wireless remote control extension cable**
- **Double sided tape** (for Wireless remote control extension cable)
- **Video signal cable** (DVI-D-DVI-D)
- **Audio cable**
- **USB cable extension**
- **Bracket x 2**
- **Power Cord**
- **AC adapter** (DXW1225N-S0068Z)
- **Set up guide**
- **CD-ROM** (User's Manual & software)

Terminal panel



① DC IN connector

Connect the enclosed AC adapter.

② Memory card connector

Set the enclosed memory card.

③ S-VIDEO IN connector

Connect with video devices, such as DVD players, and movies from video devices can be placed with messages and still images.

Use an S video cable (available in stores).

④ Power Indicator

Power button ON: Green light turns on

Power button OFF: Green light flashes then red light turns on

⑤ Remote control sensor

This is the light receiving part of the signal from the wireless remote control.

⑥ Wireless remote control extension connector

In cases such as when the remote control sensor is hidden behind the liquid crystal display, connect the enclosed wireless remote control extension cable.

Secure the light receiving end of the wireless remote control extension cable in a position from which remote control operation is possible using the enclosed double-faced adhesive tape.

⑦ Reset button

The main body is reset. Even if the reset button is pressed, the data in the memory card will not be erased.

⑧ AUDIO IN

When using the S-VIDEO IN connector, this is connected to the audio output from a video device.

⑨ AUDIO OUT

This is connected to the AUDIO IN of the liquid crystal display.

⑩ DVI OUT

This is connected to the DVI input connector of the liquid crystal display.

⑪ USB memory connector

This is used when distributing program data via USB memory or when updating internal firmware.

If it is difficult to use the connector for USB memory due to the location installed, use the enclosed USB cable extension.

⑫ LAN connector

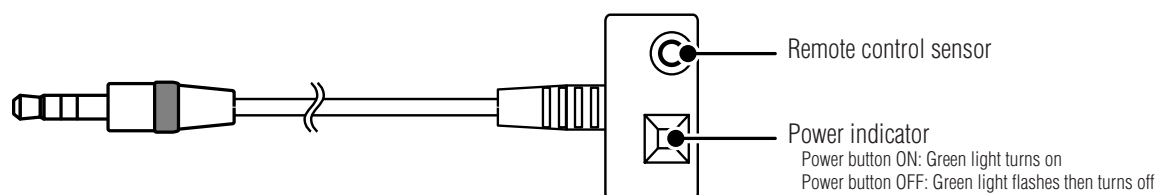
This is connected to the LAN cable when distributing program data via LAN.

⑬ External connector

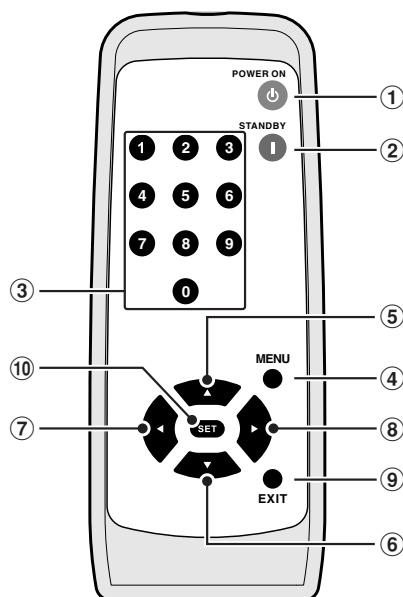
Terminal used for maintenance.

Cannot be used.

Wireless remote control extension cable



Remote control



① Power button (POWER ON)

Press this button to turn the power on.

② Standby button (STANDBY)

Press this button to turn the power off.

③ Number buttons

④ MENU button (MENU)

This button turns the OSD screen on and off.

⑤, ⑥, ⑦ and ⑧ Direction button

Use this button to select the settings on the OSD screen.

⑨ EXIT button (EXIT)

This button returns the OSD to the previous screen.

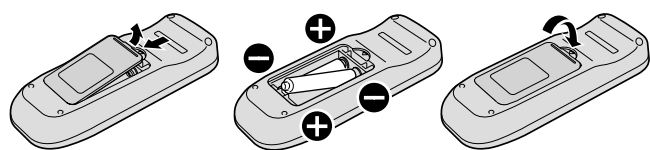
⑩ SET button (SET)

This button saves on the selection on the OSD screen.

Handling the remote control

Install the remote control batteries

This requires two AA batteries. Install the batteries as shown in the diagram below.



A. Press end slide to open the cover

B. Align the batteries according to the (+) and (-) indications inside the case

C. Replace the cover.

CAUTION:

Incorrect usage of batteries can result in leaks or bursting. NEC recommends the following battery use:

- Place the batteries properly according to the [+] and [-] indicators.
- Batteries have different characteristics depending on type, so do not mix batteries of different types.
- Do not combine new and old batteries. Doing so may shorten the life of new batteries, or cause liquid leakage from old batteries.
- Remove dead batteries immediately to prevent battery acid from leaking and causing a malfunction. Do not touch leaked battery acid as it may irritate the skin. Carefully wipe the acid with a cloth.

NOTE:

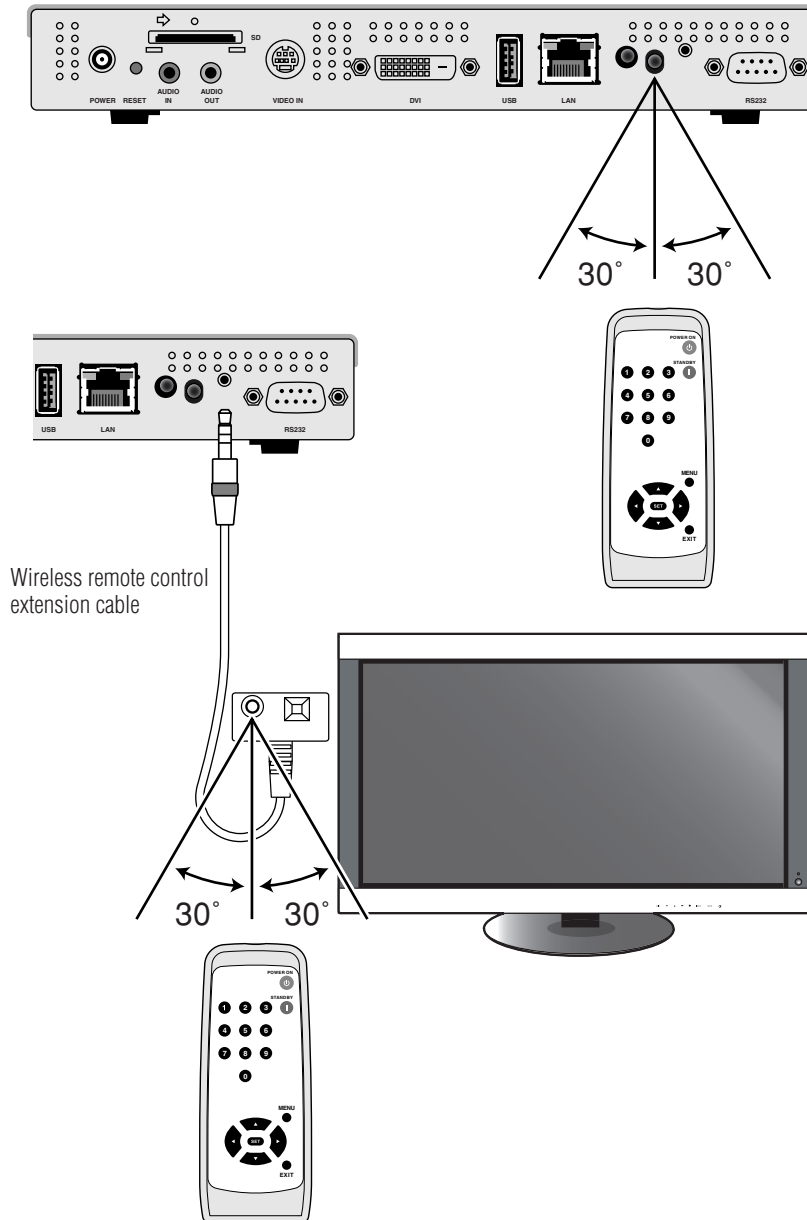
- **Other than to install the batteries, do not open the remote control.**
- **If you do not intend to use the Remote Control for a long period of time, remove the batteries.**

Attention

- **Do not subject to strong shock.**
- **Do not expose to water. If the equipment is exposed to water, immediate wipe away the water.**
- **Avoid exposure to heat and steam.**

How to Use the Remote control

When operating the remote control, direct the end of the remote control towards the remote control sensor. Use the remote control within 7 m of the front of the remote control sensor or within 3.5 m when at a 30° angle above, below, to the left, or to the right of the sensor.



NOTE:

- When using the remote control sensor on the rear side of the equipment, do not connect the wireless remote control extension cable. When the wireless remote control extension cable is connected, the remote control sensor on the rear side of the equipment will not work. If it is difficult to operate the remote control using the remote control sensor on the rear side, use the wireless remote control extension cable.
- When using a wireless remote control extension cable, secure the light receiving part at the end of the cable with the enclosed double-faced adhesive tape in a location where the light of the remote control can reach it easily.
- The remote control operation may not work in places where there is direct sunlight, strong light, or near fluorescent lights.

Connection and setting

When using LAN, after finishing the "Connection/Setting" in this chapter, refer to the "LAN Connection/Setting" (page 16).

Preparation

In order to use the Media Player to display the program on the Display, the enclosed authoring software, a computer, and a USB memory (if the program is distributed using USB memory) are required.

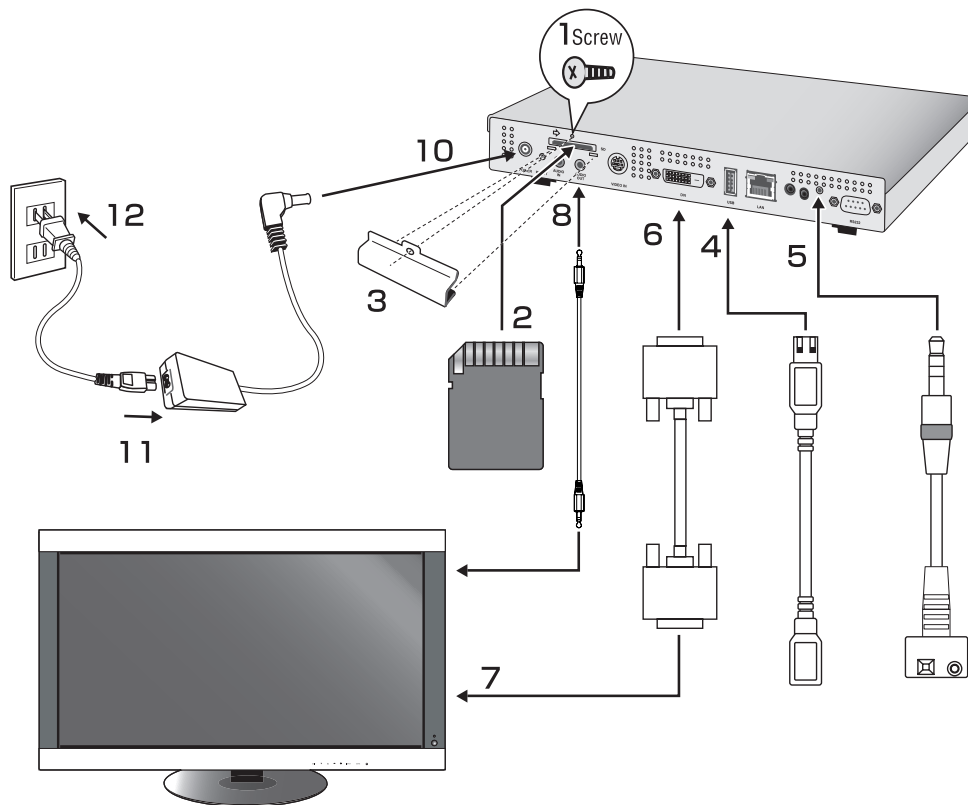
Authoring software

The authoring software is on the enclosed CD-ROM. Install the authoring software on your computer when using it for the first time. Refer to the authoring software User's Manual for the installation procedure.

USB memory

Encoded USB memory cannot be used.

Connection when using USB memory to distribute programs



1. Remove the screw from the mounting hole for the memory card cover.
2. Insert the attached memory card into the memory card connector.

CAUTION:

Insert the memory card with the label side down. Check to make Sure that the write protect switch in riot in the look position.

3. Attach the memory card cover with the screw that was removed from the main body.
4. Insert a USB cable extension into the USB connector.
(When the program is distributed using a USB memory)

Connection and setting (continued)

5. Set the wireless remote control extension cable in the wireless remote control extension cable connector. Secure the light receiving part at the end of the cable with the enclosed double-faced adhesive tape in a location where the light of the remote control can reach it easily.

NOTE:

When using the remote control sensor on the rear side of the equipment, do not connect the wireless remote control extension cable. When the wireless remote control extension cable is connected, the remote control sensor on the rear side of the equipment will not work. If it is difficult to operate the remote control using the remote control sensor on the rear side, use the wireless remote control extension cable.

6. Connect a video signal cable (DVI-D-DVI-D) to the DVI OUT.
7. Connect the signal cable to the DVI input connector of the Display.
8. Connect the audio cable to the AUDIO OUT and connect the other end to the AUDIO IN of the Display.
9. Switch on the Display. Set the input signal of the Display to "DVI."
10. Set the plug of the AC adapter cable into the DC In connector.
11. Securely insert one end of the power cord into the power connector of the AC adaptor.
12. Connect the power plug to the AC power source. The power of the Media Player is automatically switched on.

Warning

- Do not use the equipment with a source voltage other than what is displayed. Doing so may cause fires or electric shock.
- If the power code provided with this Media Player doesn't match the voltage of the power outlet, please use a power cord that matches the AC voltage of the power outlet and has been approved by and complies with the safety standard of your particular country.
- Always use the AC adaptor (DXW1225N-S0068Z) enclosed with the equipment. Using other AC adaptors may cause smoke or sparks.
- When connecting an AC adaptor, make sure that the cord is not bent or placed under the equipment.
- The power cord and AC adaptor enclosed with this equipment should be used only with this equipment. To ensure safety, do not use with other equipment.

Attention

- Make sure the area around the power source is such that the power plug can be easily plugged in and pulled out.

NOTE:

When starting the Media Player for the first time or resetting the equipment, the message "Factory reset is done" may be displayed.

Setting

Language setting

In the default conditions, the language of the OSD menu is set to English. To change the language setting to other language, press the menu buttons of the remote control and display the OSD screen, and change the "LANGUAGE" on the OSD display to other language.

Date/Time setting

To display a program on the Media Player according to the set schedule, "DATE/TIME" setting is required. Press the MENU buttons of the remote control and display the OSD screen, and set the Date and Time.

VIDEO OUT

Set the "VIDEO OUT" according to the optimum resolution of the Display.

For other settings, refer to "OSD."

NOTE:

• About the automatic OFF function of VIDEO OUT

- For periods of time in which programs are not set, the VIDEO OUT is switched OFF to conserve energy.
(When the product is first purchased, programs are not set, so it is always switched OFF.)
- In Video out off, OSD can be displayed by MENU button on remote control.

How to create program data

Preparing content

First, prepare the content you want to display.

Content files available for use with the authoring software are as follows:

File format		Extension
Still image (JPEG, PNG, BMP)		*.jpg, *.jpeg, *.png, *.bmp
Movie	MPEG1, MPEG2	*.mpeg, *.mpg, *.m2p, *.m2v, *.vob
	Windows Media Video 9	*.wmv
Audio		*.mp3

CAUTION:

Depending on the file, it may not be used. For details, refer to the "Content Specifications."

NOTE:

Data created using PowerPoint® presentation software (*.ppt) can be used on this equipment by converting it to still images (*.jpg, *.png, *.bmp) using the conversion software Viewer PPT Converter on the enclosed utility disc.

However, animations and movies cannot be converted.

Create program data using authoring software

Click on the authoring software in the computer to start the program. For details on how to use authoring software, refer to authoring software User's Manual.

Save the program data created on a USB memory connected to the computer using the distribution function of the authoring software.

Copy the program data on the memory card of the Media Player

1. Prepare USB memory containing program data.
2. Press the “STANDBY” button of the remote control to switch off the power of the Media Player, and then set the USB memory containing the program into the USB cable extension.

NOTE:

If the USB cable extension is not used, set the USB memory directly into the USB memory connector on the main body of the Media Player.

CAUTION:

When the program is updated, the program data in the Media Player will be overwritten. Please be aware that the old program data will be lost.

3. Press the “POWER ON” button of the remote control to switch the Media Player on. The update confirmation screen will be displayed, so press the “SET” button.
The file on the USB memory will be copied onto the memory card in the equipment.

CAUTION:

While the “Now updating... Important!!!” message is displayed, do not remove the USB memory or switch off the power source. The data on the USB memory or memory card may be damaged.

4. After the files are copied, the equipment will automatically restart. After the equipment completes initialization (approx. 1 minute) the update confirmation screen is displayed again. Press the EXIT button and cancel the screen.
5. Remove the USB memory from the USB cable extension.

CAUTION:

The maximum capacity of the program data is 1.8 Gbytes (in the case of the enclosed SD card (2 Gbytes)).

When copying the program data onto the Media Player, make sure the content data capacity in the USB memory does not exceed this size. The maximum capacity of the SD card set in the Media Player can be confirmed on the “MEMORY CARD” of the OSD screen.

The update time of the program data is about 15 minutes (maximum) when the data capacity is 1.8 Gbytes.

OSD

Main Menu	Sub Menu	Description
DATE/TIME	Date	Set the current Date and Time.
	Time	
	NTP Server	This is not used in this equipment.
	Time Zone	This is not used in this equipment.
NETWORK	Static IP/DHCP	Select the IP Address setting method.
	IP	Set the IP Address used when selecting a Static IP. The default setting is (192.168.0.2)
	Netmask	Set the Netmask used when selecting the Static IP. The default setting is (255.255.255.0)
	Gateway	This is not used in this equipment. Leave the default setting at (192.168.0.1)
	DNS	This is not used in this equipment. Leave the default setting at (0.0.0.0)
	MAC	This is the MAC address for this equipment.
	Proxy	This is not used in this equipment. Leave the default setting at (0.0.0.0)
	Update Mode from LAN	Set it to "Push Mode" (default setting). The "Pull Mode" is not used with this equipment.
PREVIEW		Preview the selected program. Select the program to preview on the "Program List". During preview, push any button on the remote control to display the review end menu. The preview will be displayed repeatedly until it is ended up manually. * If the OSD menu is selected while displaying the "Slide Show Mode", the "PREVIEW" is not displayed.
TIMER	Power-ON/Power-OFF	Switches the equipment ON/OFF. If there is program data that set the time for power on/off, the setting of the program data is valid, and the timer setting is void. The time set in the program is displayed.
	Video-ON/Video-OFF	This is a setting for future extensions. Do not select this when using the equipment.
LANGUAGE		Select the language for the OSD menu.
VIDEO OUT		Select the "VIDEO OUT" according to the Display to be used. Check the "Read Timing from Display" item and the recommended timing for the Display will be shown. Depending on the Display, the recommended timing may not be set normally. In such cases, clear the check from this item.
VIDEO IN	Normal	Normally this is used.
	S-Video Through Out	Image from S-VIDEO input will be displayed full screen. Information other than S-VIDEO (such as Message) will not be displayed.
MEMORY CARD	Free	This is the remaining area available for use.
	Available	This is the maximum capacity of content that can be used. As a rough guide, it should be about 90% of the memory card capacity. (In the case of the enclosed memory card (2 Gbytes), it is displayed at around 1.8 Gbytes.)
	Delete All Content Files	All content will be deleted.
IR CONTROL	Normal	Remote control operation will be locked. To release the lock, press the "MENU," "1," "2," and "3" buttons on the remote control in order, then wait 3 seconds. If "OSD Menu Unlock" is displayed, the lock has been released.
	IR Lock	
SLIDE SHOW	Normal Mode	The program is displayed according to the schedule set in the Authoring Software.
	Slide Show Mode	This sets the mode in which the images (*.jpg, *.jpeg, *.png, *.bmp) on the connected USB memory are displayed continuously in the order of the file names.
	Video Repeat Mode	This sets the mode in which the moving file (*.wmv, *.mpg) on the connected USB memory are displayed continuously in the order of the file names.

Slide Show Mode/Video Repeat Mode

These functions continuously display still image data (*.jpg, *.jpeg, *.png, *.bmp) or movie files (WMV9, MPEG1, MPEG2) in the USB memory in the order of the file names.

The still image data or movie data can be displayed without using authoring software.

How to set the Slide Show Mode

1. Set the USB memory containing the still image data you wish to display in the Media Player.

NOTE:

- Change the name of the folder containing the still images to something other than "media."

2. Select "Slide Show Mode" in the "SLIDE SHOW" item of the OSD menu.
3. The time can be set from 3 seconds to 60 seconds. If it is set to "Manual," the display can be switched using the remote control direction buttons▲, ▼.

CAUTION:

The setting for the display time will become valid after a restart.

4. Press the SET button in "Folder," and select the folder containing the still images you wish to display.

CAUTION:

Folders located lower than 2 levels cannot be selected. The selection of the folder name becomes valid after a restart.

5. Select the "Apply" and select "Yes" on the confirmation screen, and the equipment will automatically restart.

NOTE:

While displaying still images, press the direction buttons ▲, ▼ and the previous or next still image will be displayed.

How to set the Video Repeat Mode

1. Set the USB memory containing the movie file you wish to display in the Media Player.

Note

- Change the name of the folder containing the movie file to something other than "media."

2. Select "Video Repeat Mode" in the "SLIDE SHOW" item of the OSD menu.

CAUTION:

- Select full screen and the image will always be shown in full screen.

3. Press the SET button in the "Folder," and select the name of the folder that contains the movies you wish to display.

CAUTION:

Folders located lower than 2 levels cannot be selected. The selection of the folder name becomes valid after a restart.

4. Select the "Apply" and select "Yes" on the confirmation screen and the equipment will automatically restart.

How to release the Slide Show Mode/Video Repeat Mode

1. When displaying the slide show or movie play, press the MENU button on the remote control and display the OSD menu.
2. After selecting "Normal Mode" in "SLIDE SHOW" on the OSD menu, select "Yes" on the confirmation screen and the equipment will automatically restart in Normal Mode.

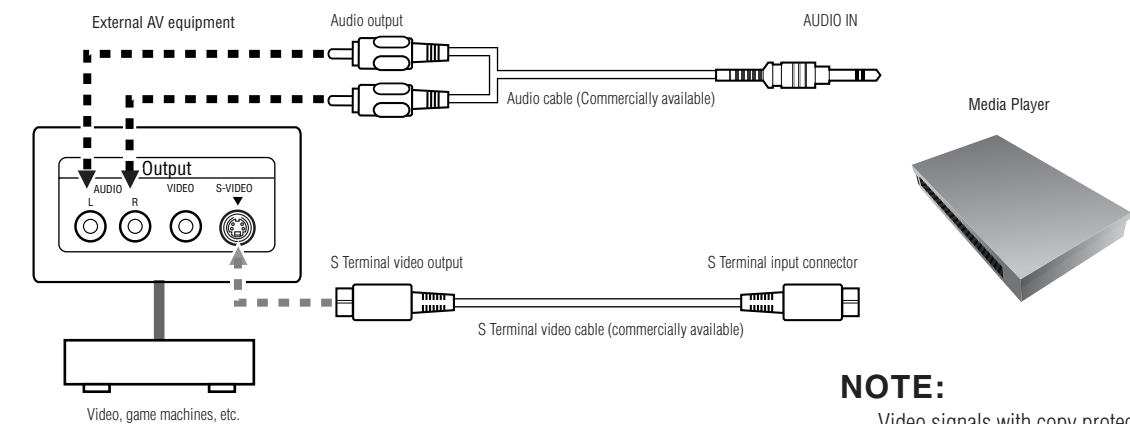
How to create program data using external video

External video image from the S TERMINAL input connector can be displayed with still images and messages. (For details refer to the authoring software User's Manual.)

Program layout example

External video image	Still image
Message	

The following shows the connection with commercially available AV equipment.



NOTE:
Video signals with copy protection cannot be displayed due to copyright protection.

How to use the enclosed brackets

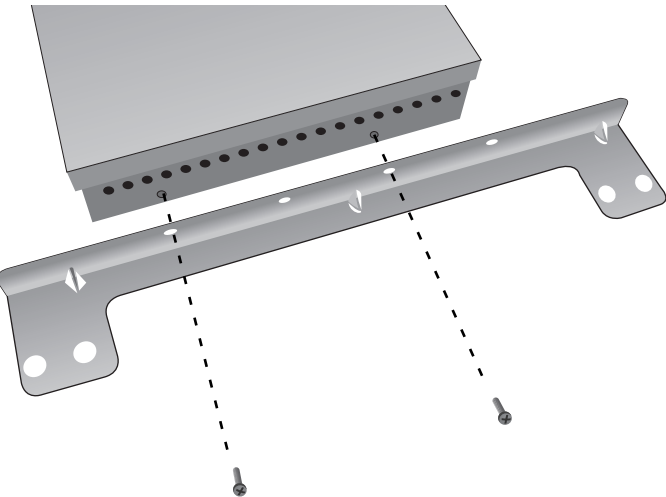
These are used to attach the Media Player to our LCD Display. The equipment can be installed to the rear side of the Display.

LCD3210	LCD3215	LCD4020	M40	P401	M401	LCD4215	LCD4620	V321	V421	V461	M46	LCD4615	P461	M461	X461UN	X461HB	LCD5220	LCD6520P/L
●	●	●	●			●	●	●	●	●	●	●						

● Can be installed on the MP-01

When installing the Media Player on the rear side of the Liquid Crystal Display

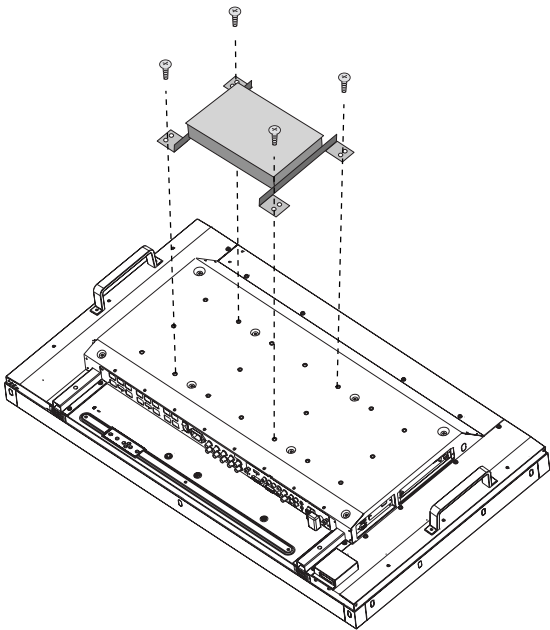
The equipment can be installed on the following Liquid Crystal Displays.
LCD3210, LCD4020, LCD4620, M40, M46, LCD3215, LCD4215, LCD4615, V321, V421, V461



1. Remove the two bracket screws from the side of the main body of the equipment. (There are two on each side.) Using the screws you removed, screw the two brackets to each side of the equipment.

2. Install the equipment on the rear side of the Liquid Crystal Display. Using an M6 screw (length is the thickness of the mounting fixture +10 mm), tighten it securely. (tightening torque 470 - 635 N •cm)

CAUTION:
Please purchase the M6 screw as it is not enclosed in the package.



LAN Connection and setting

Introduction

When distributing program data via LAN, LAN connection and setting are required.

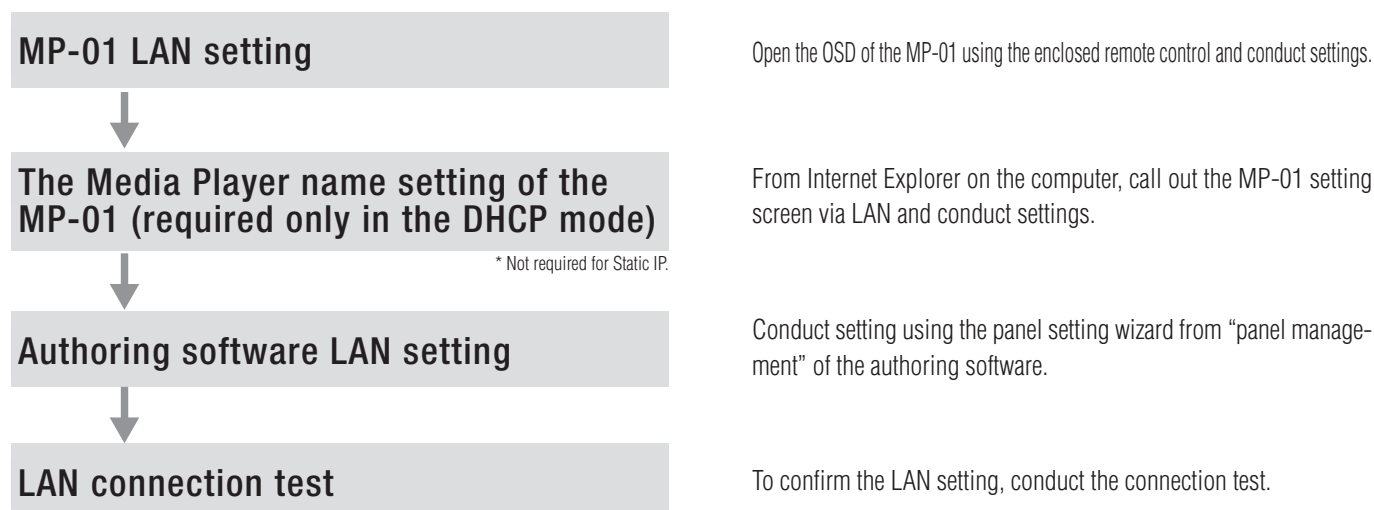
There are two methods for setting the IP Address, one for Static IP Address and one using DHCP servers.

In the case of Static IP Address, refer to “LAN connection/setting: When using Static IP Address,” and when using DHCP server refer to “LAN connection/setting: When using DHCP server.”

NOTE:

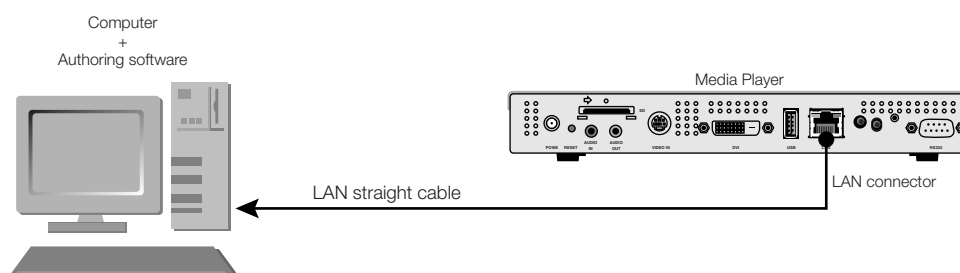
The DHCP server provides IP Addresses to equipment on the NETWORK. Normally, they are built-in with routers.

The procedure for LAN setting is as follows.

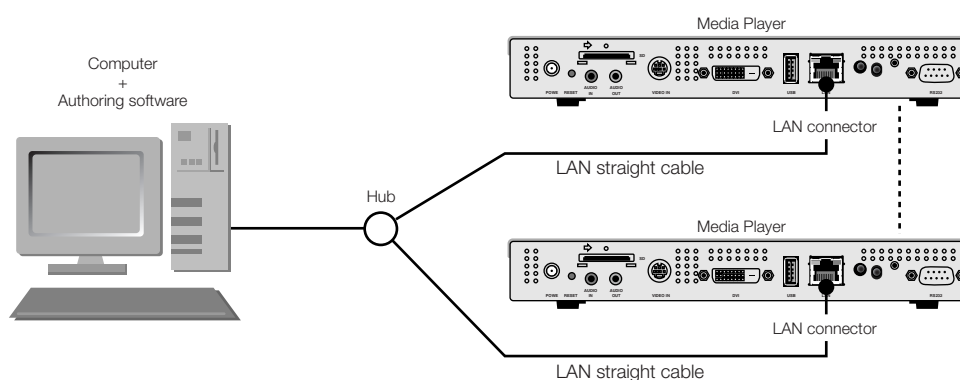


LAN Connection and setting (continued)

•When connecting directly to a computer



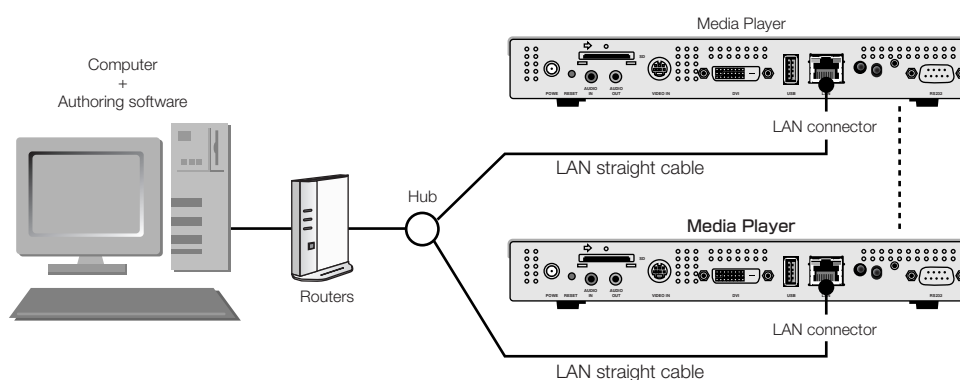
•When connecting with several computers via a hub



•When using a DHCP server (built into routers)

NOTE:

Refer to "LAN connection/setting: Use DHCP servers."



NOTE:

A maximum of 20 Media Players can be connected.

CAUTION:

Connect the computer and Media Player to the LAN terminal, not the WAN terminal of the routers.

Use commercially available routers, LAN cables, and hub.

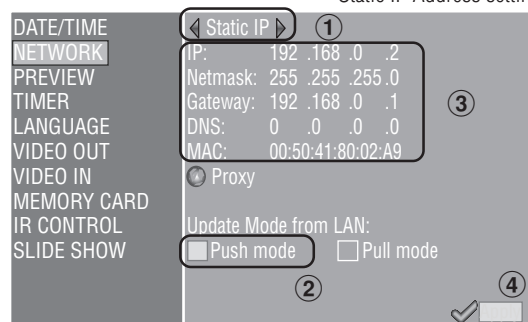
Use LAN cables that are category 5 or higher.

LAN Connection and setting: When using Static IP Address

1. Static IP Address setting of the Media Player

- 1) Switch on the power of the Media Player and Display.
- 2) Display the OSD screen using the menu buttons on the remote control, and open the "NETWORK."
- 3) Set the IP Address.

Static IP Address setting



- ① Use the left and right direction buttons on the remote control to select the "Static IP".
- ② Select the "Push Mode".
- ③ Use the number buttons on the remote control and conduct settings as shown in the table below. Write down the set IP Address and keep it for reference.
- ④ Select the "Apply".
- ⑤ Close the OSD menu using the EXIT buttons.

IP	Find out the IP Address of the computer, change only the last digit of the address, and set the address with the IP Address that is not the same as other media players. Ex) IP Address of the computer: In the case of 192.168.0.10, set the first Media Player as 192.168.0.2. Set the second Media Player as 192.168.0.3.
Netmask	Set the same value as the Netmask of the computer. The default setting is (255.255.255.0)
Gateway	Leave it at the default setting. The default setting is (192.168.0.1)
DNS	Leave it at the default setting. The default setting is (0.0.0.0)

CAUTION:

Set the computer's IP Address according to the network environment.

NOTE:

To confirm the IP Address and Netmask of the computer, startup the "command prompt" (In the Start menu>All programs>Accessories.) in Windows XP/Vista/7 and run C:\> ipconfig.

LAN Connection and setting: When using Static IP Address (continued)

2. Authoring software panel registration

Click the panel setting button in the “Panel Control” menu of the authoring software.

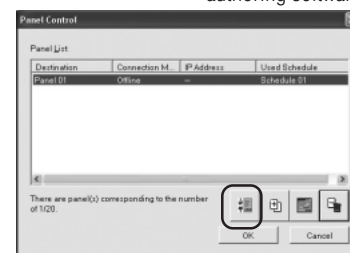
- ① Distribution list setting
If no changes are required, click “Next.”
- ② Set to LAN (Static IP) in the connection type setting.
- ③ Input the IP Address that was set in 1.
- ④ - ⑥ Set if necessary and then click “Next.”
- ⑦ Confirm the details of the setting and then click “Complete.”

For all Media Players, implement steps 1 to 7, then reconfirm the setting details in the “Panel Control” menu. Setting is completed.

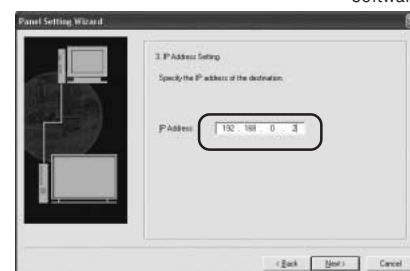
NOTE:

The settings above can be changed in the “Panel Property” of the “Panel Control”.

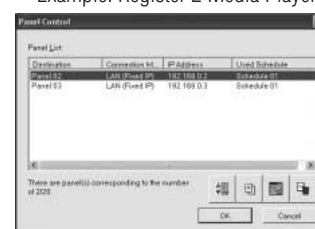
Panel setting wizard startup button of the authoring software



IP Address setting of the authoring software



Example: Register 2 Media Players



3. LAN connection test

- 1) Startup the Internet Explorer on the computer, and input the Static IP address set in the authoring software after the “http://” in the address bar.



- 2) If the user name and password screen are displayed, input the user name: default and password: 0000.
- 3) Confirm that the setting screen is displayed.

User name, password screen



NOTE:

The Media Player setting can be confirmed on the WEB setting screen.

CAUTION:

It may not be properly displayed on a browser other than Internet Explorer.

WEB setting screen

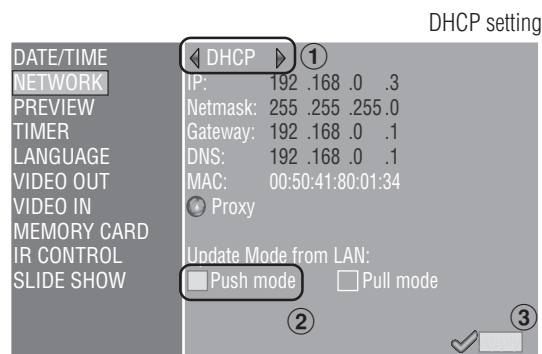


LAN Connection and setting: When using the DHCP server

1. Set the Media Player to DHCP mode.

- 1) Switch on the power of the Media Player, Display, hub, and routers.
- 2) Use the menu button on the remote control to display the OSD screen, and open "NETWORK"
- 3) Set the OSD screen as shown below.

- ① Select "DHCP" using the left and right buttons of the remote control.
- ② Select "Push Mode".
- ③ Select "Apply".



2. Confirm and set the Media Player name

The Media Player name is required in the "Panel Control" of the authoring software.

- 1) Connect the computer, Media Player, and DHCP server (or routers) on the NETWORK, and switch on the power.
- 2) Open "NETWORK" on the OSD screen of the Media Player, confirm that the IP address is properly set on the DHCP server, and keep a memo of the IP address.
(It can be set to anything other than 0.0.0.0.)
- 3) Confirm that the computer's IP Address is set.

NOTE:

IP Address is set when the DHCP is set in OSD or during startup.

- 4) Startup Internet Explorer on the computer, input the IP Address of the Media Player confirmed in 2) in the address bar after "http: // ," and click the "Go" button.
- 5) The input screen for the user name and password will be displayed. Input the username in



Ex. http: //192.168.0.2

one-byte characters and the default password, 0000, then click "OK."

Input the user name and password in the setting screen



CAUTION:

- Prepare routers that have a DHCP server or DHCP server function.
- In the case of routers, make the DHCP server function valid.
- Set the computer's IP Address according to the network environment.

NOTE:

To confirm the IP Address and Netmask of the computer, startup the "command prompt" (In the Start menu>All programs>Accessories.) in Windows XP/Vista/7 and run C:\> ipconfig.

LAN Connection and setting: When using DHCP server (continued1)

- 6) After displaying the setting screen, confirm the media player name (player Name).
To change the name, click the Change Player Name button, input the name using 15 or less one-byte characters starting with an alphabet, then click the "Submit" button. (Do not use symbols or spaces.)
Keep a memo of the Media Player name.
- 7) Close Internet Explorer.

Media Player name on the setting screen

Change Media Player Name

CAUTION:

Set it so that it is not the same as other media players.
It does not differentiate between uppercase and lowercase alphabets.

NOTE:

The default setting value of the media player name is DS34XXXXXX.
XXXXXX is the last 6 digits of the MAC address of the Media Player.
The MAC address can be confirmed in the "MAC" of the "NETWORK" of the OSD.

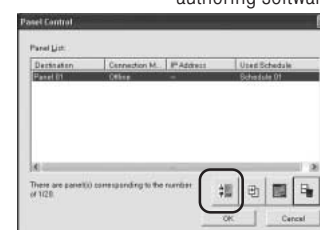
Example

In the case of MAC: 0050418000e9, the media player name is DS348000e9.
It can be used without changing the name.

3. Authoring software panel registration

Click the panel setting wizard in the "Panel Control" menu of the Authoring Software, and startup the wizard.

Startup button of the panel setting of the authoring software



- ① Distribution list name setting

If no changes are necessary, click "Next."

- ② Set to LAN (DHCP) in the connection type setting.

- ③ Input the set media player name.

- ④ - ⑥ Conduct the following settings as required, then click "Next."

- ⑦ Confirm the setting details and click "Complete."

Conduct ①-⑦ for all Media Players.

Reconfirm the setting details on the "Panel Control" menu.

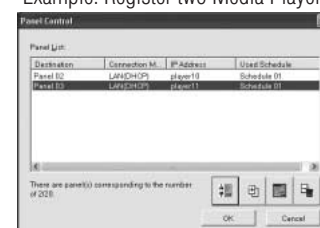
The setting is complete.

Media Player name setting

NOTE:

The above setting can be changed in the "Panel Property" of the "Panel Control".

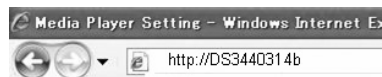
Example: Register two Media Players



LAN Connection and setting: When using a DHCP server (continued 2)

4. LAN connection test

- 1) Startup Internet Explorer on the computer, input the Media Player name set in the authoring software in the address column after the “http://.”



Ex. http: //DS3440314b

NOTE:

The uppercase and lowercase alphabets in the media player name are not differentiated.



- 2) When the user name and password screen are displayed, input “user name: default and password: 0000”
- 3) Confirm that the setting screen is displayed.

NOTE:

The Media Player setting can be confirmed in the WEB setting screen.

CAUTION:

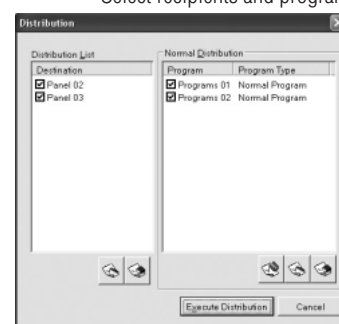
It may not be properly displayed on a browser other than Internet Explorer.



Distribute program data to the Media Player

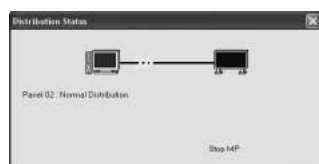
1. Use authoring software to create a program.
Refer to the “MP-01 Quick Reference Guide” on the enclosed CD-ROM.
2. Switch on the power to the devices on the network such as Media Players, computers, hubs, and routers.
3. Click the “Distribution” button in the authoring software.
4. Select the recipient (Media Player) in “Distribution List”.
5. Select the program that is necessary.(When selecting the recipient, the program registered in the schedule will be selected.)
6. Click the execute distribution button.
7. The program data will be distributed to the selected recipients on the distribution list. After the program is distributed to all recipients, it will end.

Select recipients and program



NOTE:

The error information and distribution program can be confirmed on the distribution log.



8. When distribution starts, the Media Player will stop displaying the program and receive the program data. While receiving the data, the following message will be displayed.

Content Updating... Please do not power-off.

CAUTION:

- If the data is received while a program is not displayed, the message is not displayed and the screen remains black.

9. After receiving the program data, the Media Player will generate the program data.
10. Media Player will restart (it will take approx. 1 minute), and afterwards, the program will be displayed according to the schedule.

CAUTION:

- Once distribution is conducted, the old programs in the SD Memory Card are erased.
- To distribute a 100 MB program to one Media Player, 1) it takes approx. 1 minute to distribute the authoring software, and 2) 1 minute to generate the program data on the Media Player side after distribution.
*The time differs depending on the performance of the PC and the program details.
*After 2), it takes approx. 1 minute for the Media Player to restart.
- Do not switch off the power while the data is being distributed or while the program data is being generated.
- The Media Player must be switched on for the distribution to work.
- While the Media Player is generating the program data, if you distribute the content from Authoring Software to (the procedures of steps 9. and 10. above), a distribution error will occur. Distribute after the Media Player is restarted.

About distributing the difference of the program data

For programs that are redistributed via LAN in order to reduce time, only the newly added movies, still images, and audio files in the program are distributed.

Program Type	Distribution file
Program to be newly distributed	All files registered in the program
Program to be re-distributed Note 1)	Distribute only the movie, still image, and audio files that were added. Note 2)

Note 1) Redistribution means a program with the same name was previously distributed to the Media Player.

Note 2) The message data and schedule file are always distributed.

Note 3) After distribution, Media Player generates new program from new files and existing files. Unnecessary old files and old programs are deleted.

Maximum program data capacity

For the maximum program data capacity of one Media Player, refer to the table below.

If an insufficient SD card memory capacity error (Error code 441) is displayed during distribution, reduce the program data or increase the SD Memory Card capacity.

Distribution method	Maximum program data capacity	Ex)
USB memory	Within 90% of the SD Memory card capacity Note 1), Note 2)	In the case of 2 Gbytes SD card, up to 1.8 Gbytes.
LAN	As a guideline, it should be less than 45% of the SD Memory card capacity. Note 3), Note 2)	In the case of a 2 Gbytes SD card, up to 0.9 Gbytes as a guideline.

Note 1) The program data capacity is the total of capacity for each program data.

The capacity of one program data is the total capacity of the movie, still image, and audio data registered.

Ex) When the program distributed to one Media Player registers program 1 (still image 1 and movie 1) and program 2 (still image 2 and movie 1), the program data capacity will be the total capacity for still image 1 + movie 1 + still image 2 + movie 1.

Note 2) After distribution, the SD card occupied area can be confirmed in the "Memory Card" items of the OSD.

Note 3) Depending on the structure of the program, the maximum capacity may increase.

Media Player power management during distribution

When distributing, the Media Player must be switched ON (power indicator is green).

The program cannot be distributed when the power is OFF (power indicator is red).







And when setting the power timer of the Media Player, set it so that the power is ON during the period of time when the data is distributed.

The Power timer can be set in power management of the panel management menu in the authoring software.

Troubleshooting (startup, video audio output, remote control, OSD)

Symptoms	Conditions	Causes and Measures	Reference page
The power cannot be switched on.	The main body power indicator will not light up (ON: Green, OFF: Red)	Confirm the connection of the AC adaptor and power cord, and the DC power source input connector. Confirm that power is properly supplied from the power source by connecting a different device to the power source.	P8
	The power indicator of the wireless remote control extension cable is not lit up (ON: Green, OFF: light turns off)	Press the power button of the remote control, and confirm that the power indicator is lit up. Confirm the connection of the wireless remote control extension cable. (Insert the cable securely.)	P6 P7
There is no image or sound	The image is not displayed on the screen.	The video signal cable (DVI-D-DVI-D) may not be properly connected to the connector of the equipment or Display, so confirm that it is connected. Confirm that the DVI input is selected on the Display side.	P8
		Press the Menu button on the remote control, and confirm that the OSD screen is displayed a few seconds later. If it is displayed, the automatic OFF function of the VIDEO OUT may be operating. (For the time periods where programs are not set, the VIDEO OUT is switched OFF. When the equipment is purchased, the programs are not set, so the VIDEO OUT is switched OFF. When it becomes the time period that a program is set, VIDEO OUT is switched ON.)	P9
	There is no sound.	Confirm the audio cable connection between the equipment and speaker. Confirm that the audio input of speaker devices and volume is properly selected.	P8
	The above was tried, but nothing was displayed.	Conduct the following operations to initialize the system. Doing so will return the settings to the default conditions. 1) Switch off the power with the remote control. 2) Press the power button on the remote control, and after the power indicator turns green, immediately press the number buttons in the following order: 7, 8, and 5. 3) The Media Player system is initialized and started up. After the system starting is displayed on the screen, the message "Factory reset is done" is displayed. 4) Reset "LANGUAGE", "DATE/TIME", and "VIDEO OUT".	—
Remote control is not operating.		If the wireless remote control extension cable is mounted, the light receiving part of the equipment will not operate. Direct the remote control to the light receiving part of the remote control light receiving extension cable to operate the remote control.	P7
		There are no batteries in the remote control. Or the batteries are weak. Confirm that the batteries are properly installed.	P6
		The "IR Lock" might be operating. Release the IR Lock.	P12
The image is not properly displayed.	The screen flickers.	Confirm that the Display is compatible with the resolution of the Media Player. If it is not compatible, change the display setting of this equipment to one that is compatible with the Display.	P29
	A message from the display side will be shown to indicate that it is an unsupported signal.		
	The Media Player display is too small or too large for the screen.		
During startup, the caution screen is displayed.	The color is strange.	Confirm the signal cable connection between the equipment and the Display.	
	The message "It failed to access the memory card" is displayed.	The Memory card may be dislodged. Confirm that the memory card is securely mounted.	P8
	The message "It failed to recover library (.img) file. There is no library file in the memory card" is displayed.	Remove the memory card, and confirm that there is a file with the .img extension on the computer. If such a file does not exist, obtain a file from the enclosed CD-ROM and copy the file.	P28
	The message "There is no scheduled program at current time." is displayed.	Confirm that the date and time setting is correct. Confirm the schedule setting of the authoring tool to make sure there are no errors. If there is an error, correct the schedule and conduct content update.	P9 —
	The message "A content folder is found in USB memory. Press [Set] to update content from USB memory." is displayed.	This is displayed when a USB memory has been mounted. If a content update is not to be conducted, press the EXIT button and remove the USB memory.	—
	The message "Please plug in USB memory for Slide Show mode." or "Please plug in USB memory for Video Repeat mode." is displayed.	It is the Slide Show Mode or Video Repeat Mode. Connect a USB memory that contains still images or movies. If you do not wish to use this mode, press the EXIT button and end it, and set the Slide Show Mode or Video Repeat Mode to "Normal Mode" in the Slide Show menu of the OSD screen.	P12, 13
	"There is no file in USB memory for Slide Show mode." or "There is no file in USB memory for Video Repeat mode. Please plug in another USB memory." is displayed.		
Content cannot be updated	Even when the power is switched on with the USB memory mounted, the message "A content folder is found in USB memory. Press [Set] to update content from USB memory." is not displayed.	Use the computer to confirm that there is a folder named media on the USB memory. If there is no folder named media, use the authoring software to save the program data on the USB memory.	—
		Confirm the connection of the USB cable extension.	P8
		Make sure that the USB memory format is not NTFS format.	—
		Confirm that the USB memory is not encrypted.	—
		Try a different USB memory.	—
	The message "No content file is found. Updating is aborted." is displayed.	Use authoring software to save the program data on the USB memory.	—
OSD timer function will not operate	The timer setting in the OSD menu cannot be set	When power control is set with content update, the timer function becomes void.	P12
	The power is switched off automatically.	Confirm that the power control is not set in the TIMER or authoring software. If it is set, release if necessary. For details on releasing power control in the authoring software, refer to the power management section of the authoring software User's Manual.	—
	The timing display is displayed in the "VIDEO OUT" setting, but it cannot be selected.	Remove the check from the "Read timing from display" in the "VIDEO OUT" menu of the OSD screen.	P12
Slide Show Mode or Video Repeat Mode will not operate.	When starting up the power, the message "There is no file in USB memory for Slide Show mode." or "There is no file in USB memory for Video Repeat mode." Please plug in another USB memory." is displayed.	Confirm that there are still images or movies on the USB memory, or confirm the folder setting from "SLIDE SHOW" on the OSD menu.	—
		Confirm that the still image file or movie file is a file that is supported by Media Player.	P30
	The USB memory is mounted, but when starting up the power, the message "Please plug in USB memory for Slide Show mode." or "Please plug in USB memory for Video Repeat mode." is displayed.	Confirm the connection of the USB cable extension.	P5, 8
		Try a different USB memory.	—
During startup, the confirmation screen for content update is displayed or the existing program is displayed.		Confirm that the "Slide Show Mode" is selected in the "SLIDE SHOW" menu of the OSD screen.	P12, 13

Troubleshooting (program, content display)

Symptoms	Conditions	Cause and measures	Reference page
The movie is not properly displayed.	The message "The codec is not supported" is displayed, nothing is displayed or  is displayed.	Confirm that the codec of the movie file you are trying to display is supported by this equipment.	P30
	The message "The codec is not supported" is displayed, nothing is displayed or  or  is displayed.	The file cannot be open or played. The file format may not be supported. Confirm the format details on the "Content Specifications". Or the file may be broken. Confirm that it can be played on the computer.	
	The message "The codec is not supported" is displayed, nothing is displayed or  is displayed.	If the movie bit rate exceeds the maximum value, it will not be displayed. Use the movie editing software to reduce the bit rate. Reference: movies with (movie file size (Bytes)/Play Time (Sec.)) x 8-bit) that is larger than the maximum bit rate will not be displayed.	
	The movie is displayed but the sound does not come out.	Confirm that the audio in the movie file is a file supported by this equipment.	
	In the vertical layout, the movie will not rotate 90 degrees.	The movies are not automatically rotated in the vertical layout. Before using the authoring tool, use the movie editing software and rotate the image. The movies that include a copyright protection function cannot be played.	P30 — —
The still images are not properly displayed.	The message "The image items are not supported" is displayed, there are images that are not displayed or  is displayed.	Confirm that the format of image file you are trying to display can be displayed with this equipment.	P30
		Confirm that the codec of the image file you are trying to display can be displayed with this equipment.	P30
		The file may be damaged. Confirm that it can be displayed on the computer.	—
The Message is not properly displayed.	Nothing is displayed.	Confirm the message setting of the authoring software.	—
	Specified characters are not displayed.	One-byte "<" and ">" symbols are not displayed. Make the characters two-bytes. A small number of special characters may not be displayed.	—
	When the vertical layout is selected, specified characters are not rotated.	(=),(,)(" ") are not rotated.	—
	It takes time for the message to be displayed.	As the number of characters in a message increases, the time until it is displayed becomes longer. It takes about 7 seconds to display 100 characters.	—
	It takes time for the telop to be displayed.	Set the height of telop less than 30% whole display.	—
The movie of the external video is not displayed.	The message "This is not displayed for the signal with copyright protection" is displayed or  is displayed.	Video signals with copy protection cannot be displayed due to copyright protection.	— — —
There is nothing displayed between the programs.		When switching the movie, there is about 10 to 20 seconds where there is no image or audio, however this is not an error or malfunction.	—
It is not displayed according to the schedule setting.		Confirm that there are no errors in the schedule setting of the authoring tool. If there are any errors, correct the schedule and update the content.	—
		Confirm that the date and time setting are correct.	P9

Troubleshooting (when using LAN)

Symptoms	Conditions	Authoring software error code	Cause and measures	Reference page
<ul style="list-style-type: none">• Cannot be distributed.• Cannot be connected with the connection test.	In the case of Static IP settings	Error code: -1 Error code: 102	Confirm that the IP Address set in the Authoring software is correct.	P18, 19
			Confirm that the network setting of the Media Player is correct.	
			Confirm that the IP Addresses of the Media Players are not overlapped.	
			Confirm the network setting of the computer.	
	In the case of DHCP setting	Error code: -1 Error code: 100 Error code: 102	Confirm that the DHCP servers of the routers are valid.	P20, 21, 22
			Confirm that the Media Player name of the Media Player is correct.	
			Confirm that the Media Player name of the authoring software is correct.	
			Confirm that the Media Player names are not overlapped. * The uppercase and lowercase alphabets in the media player name are not differentiated.	
	Common Static IP/DHCP setting	Error code: -1 Error code: 100 Error code: 101 Error code: 102	Confirm the LAN cable connection.	P17
			Confirm that the power of the Router, hub, and Media Player are switched ON (power indicator is green).	—
			The Media Player may switched off. Manually switch on the Media Player or change the power timer setting so that the power is ON during distribution.	P24
			Confirm that the port number is not closed by firewall or security software. This device is used port 137, 138 or 1900 when sending from the Media Player. An optional port is used when sending from Authoring software. Media Player is starting up. Let some time pass before redistributing.	—
		Error code: 434	Media Player is updating. Let some time pass before redistributing.	—
		Error code: 441	The SD Memory Card has insufficient capacity. Reduce the program data or change the SD Memory Card to one with a larger capacity.	P24
		In case of off-line (when using USB memory)	Error code: 501 Error code: 507	It may not able to recognize the USB memory. Load the USB memory again.
The USB memory may be coded. It cannot be used by this device.				
Confirm the capacity of 1 file does not exceed 4G byte of the upper limit.				
The WEB setting screen cannot be opened.	Error occurred when inputting user name and password		Input user name: default, password : 0000	P20, 22
	The Media Player name cannot be set.		Set 15 or less one-byte characters (alphabets or numbers) starting with alphabets. Spaces and symbols cannot be used. After input, click the Submit button.	P20, 21
	The selection button is not displayed.		This may occur when using a browser other than Internet Explorer.	—

NOTE:

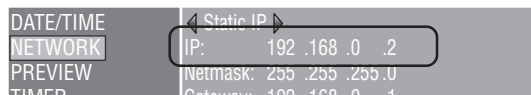
If there is a problem with the connection test, refer to the next page.

Troubleshooting (Using Ping command to conduct a LAN connection test)

If the data cannot be distributed via LAN, use the Ping command on the computer to conduct a LAN connection test.

In the case of a Static IP Address

- ① Look up the IP Address in "NETWORK" on the OSD.



- ② Startup the command prompt in Windows on the computer.
- ③ Enter C: \>ping <IP Address>.
- ④ If a reply is returned, the connection is made.

Command prompt screen

```
C:\>ping 192.168.0.2 ③

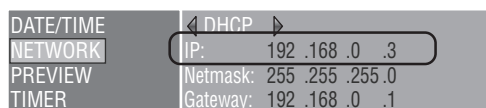
Pinging 192.168.0.2 with 32 bytes of data: ④

Reply from 192.168.0.2: bytes=32 time<1ms TTL=64
Reply from 192.168.0.2: bytes=32 time<1ms TTL=64
Reply from 192.168.0.2: bytes=32 time<1ms TTL=64
Reply from 192.168.0.2: bytes=32 time<1ms TTL=64

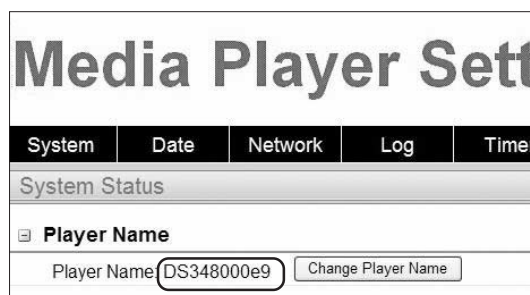
Ping statistics for 192.168.0.2:
    Packets: Sent = 4, Received = 4, Lost = 0 (0% loss),
    Approximate round trip times in milli-seconds:
        Minimum = 0ms, Maximum = 0ms, Average = 0ms
```

When using a DHCP server

- ① Look up the IP Address in "NETWORK" on the OSD.



- ② Open Internet Explorer on the computer and enter "http: //<IP Address>" in the address bar.
- ③ Confirm the Media Player name when the WEB setting screen is displayed.



- ④ Startup the command prompt in Windows.
- ⑤ Enter C: \>nbtstat -R.
- ⑥ Enter C: \>ping <Media Player name> .
- ⑦ Confirm that an IP Address is displayed.
- ⑧ Confirm that it matches the IP Address in ①.
- ⑨ If a reply is returned, the connection is made.

Command prompt screen

```
C:\>nbtstat -R ⑤
Successful purge and preload of the NBT Remote

Cache Name Table.

C:\>ping ds348000e9 ⑥

Pinging ds3440314b [192.168.0.3] ⑦ with 32 bytes of data:

Reply from 192.168.0.3: bytes=32 time<1ms TTL=64 ⑨
Reply from 192.168.0.3: bytes=32 time<1ms TTL=64
Reply from 192.168.0.3: bytes=32 time<1ms TTL=64
Reply from 192.168.0.3: bytes=32 time<1ms TTL=64

Ping statistics for 192.168.0.3:
    Packets: Sent = 4, Received = 4, Lost = 0 (0% loss),
    Approximate round trip times in milli-seconds:
        Minimum = 0ms, Maximum = 0ms, Average = 0ms
```

NOTE:

If it cannot be connected, reconfirm the LAN cable connection, Media Player and computer settings, and make sure the Media Player is switched ON (power indicator is green).

If it can be connected with this test but cannot distribute, confirm that the firewall or security software is not set to block the FTP transmission.

Maximum Play Time for movies

In the case of the enclosed Memory card (2 Gbytes), it would be as follows.

*The Play Time will differ depending on the SD Memory card capacity, and the VIDEO and AUDIO bit rate. Does not include still images and messages.

SD Memory card capacity	bit rate		Play Time (Min.)	Remarks
	VIDEO	AUDIO		
2Gbytes	25Mbps	128kbps	10	1920 x 1080 MPEG2
2Gbytes	10Mbps	128kbps	25	1920 x 1080 WMV9
2Gbytes	6Mbps	128kbps	40	720 x 480 MPEG2

The approximate time can be calculated using the following formula.

Play Time (Sec.) = (SD Memory card capacity (Gbyte) x 0.9) x 1024 (Mb) x 1024 (kb) x 8-bit / ((VIDEO bit rate (Mbps) x 1024 (kb)) + AUDIO bit rate (kbps))

Ex) SD Memory card: 2 Gbytes, VIDEO bit rate: 10 Mbps, AUDIO bit rate: 128 kbps

$(2G \times 0.9 \times 1024 \times 1024 \times 8) / (10 \times 1024 + 128) = 25 \text{ min.}$

Concerning Memory cards

The firmwares (Files with .img extension) are pre-written on the enclosed memory card. If it is mistakenly erased, use the computer to copy the firmware from the firmware_folder in the enclosed CD-ROM to the memory card.

Specifications

Media Player Specifications

Items			Specifications
External interface	Video output	Resolution	1920 x 1080 @ 60Hz 1360 x 768 @ 60Hz(default settings) 1280 x 1024 @ 60Hz 1024 x 768 @ 60Hz 1680 x 1050 @ 60Hz
		Interface	DVI-D
		Audio output	Line out L/R x 1, 3.5ø stereo mini jack
		USB memory interface	USB memory connector
		Memory card interface	Memory card (SD card) connector
	Video input		Mini DIN 7P Connector S Video: NTSC/PAL *Video signals with copy protection, such as commercially available movie DVDs, cannot be displayed due to copyright protection.
		Audio input	Line in L/R x 1, 3.5ø stereo mini-jack
		Remote control sensor	Infrared
		Input for wireless remote control extension cable	2.5ø mini-jack
	Controlled output (maintenance terminal)	D-SUB 9pin	
	LAN terminal	RJ-45 10/100BASE-T	
	Clock function		Backup conducted with internal batteries (primary batteries)
	Memory card (enclosed)		Capacity 2 Gbytes (format: FAT16) Media Player System file (pre-installed)
	External dimensions		247.6(W) x 143.6(D) x 33.7(H)
	Power source	AC adaptor	Output +12 V AC100-240V, 50/60Hz
Power consumption	Normal During standby	15W 1W or less	
Applicable standards		Safety: Electrical Appliance and Material Safety Law (AC adapter, power cord), Electro-Magnetic Interference: VCCI-B	
Packaging condition (weight/dimensions)		Approx. 2.3 kg/335.0 mm x 131.0 mm x 252.0 mm	
Weight		0.9kg	
Use Conditions	Temperature	0-40°C	
	Humidity	10%-80% (Make sure there is no condensation.)	
Storage Conditions	Temperature	-10°C to 60°C	
	Humidity	10%-90% (Make sure there is no condensation.)	

Authoring software specifications

Layout function		Layout the movie file (or video input image), still image file, and message on the screen.
Create Message		Japanese, English
Create schedule		<ul style="list-style-type: none">•Set schedule for the created program daily or individually•Setting to control power ON/OFF on the Media Player weekly
Distributing Programs		Number distributed via LAN: maximum 20 Output to USB memory
Recommended system requirements	CPU	INTEL Pentium 3 1.0 GHz or higher recommended
	Memory	256 Mbytes or more
	Resolution	1024 x 768, 65,536 colors or more
	Compatible OS	Microsoft Windows Vista Ultimate 32-bit Ver.
		Microsoft Windows Vista Business 32-bit Ver.
		Microsoft Windows XP Professional 32-bit Ver.
		Microsoft Windows XP Home Edition 32-bit Ver.
		Microsoft Windows 7 Professional 32-bit Ver.
		Microsoft Windows 7 Home Premium 32-bit Ver.
Others	For Windows XP Microsoft .NET Framework Version 2.0 or 3.5	

Viewer PPT Converter Software Specifications

Source file		Microsoft PowerPoint file (*.PPT)
Conversion output file		Conversion format: JPEG/PNG/BMP
		Resolution: Up to maximum 1920 x 1080 dots
Recommended computer conditions	CPU	INTEL Pentium 3 1.0 GHz or higher recommended
	Memory	256 Mbytes or more
	Maximum Resolution	1024 x 768, 65,536 colors or more
	Compatible OS	Microsoft Windows Vista Ultimate 32-bit Ver.
		Microsoft Windows Vista Business 32-bit Ver.
		Microsoft Windows XP Professional 32-bit Ver.
		Microsoft Windows XP Home Edition 32-bit Ver.
		Microsoft Windows 7 Professional 32-bit Ver.
Microsoft Windows 7 Home Premium 32-bit Ver.		
Microsoft Windows 7 Ultimate 32-bit Ver.		
PowerPoint		One of the following software must be installed. PowerPoint 2000 PowerPoint 2002 PowerPoint 2003 PowerPoint 2007

Restrictions

- PowerPoint Add-in function
This equipment does not support add-in functions, so do not register them.
- Use the equipment without changing the "Slide switch method" option setting. Even if the "Switching Time" is selected, it will be void.
- Still image format
When selecting a file to output, be sure to select only still image formats supported by this equipment. The formats supported are jpeg, BMP full color, and PNG full color.

Specifications (continued)

Content Specifications

(1) Movie file

Type	Video /Audio	Detailed Specifications		Extension	Maximum capacity /Movie file
WMV9 Note 6)	Video	<ul style="list-style-type: none">•Codec Windows Media Video 9 (WMV3)•Bit rate Normal resolution (Up to 720 x 480): maximum 20 Mbps High-resolution (1920 x 1080 or 1280 x 720): maximum 35 Mbps•maximum resolution 1920 x 1080 25p (progressive) 1280 x 720 30p (progressive)	Note 1) Note 4)	.wmv	FAT16:2Gbytes FAT32:4Gbytes Note 7)
		<ul style="list-style-type: none">•Codec Windows Media Video 9 Advanced Profile (WMVA)•Bit rate Normal resolution (up to 720 x 480): maximum 20 Mbps High-resolution (1920 x 1080 or 1280 x 720): maximum 35 Mbps•Maximum resolution 1920 x 1080 25p (progressive), 50i (interlace) 1280 x 720 30p (progressive), 60p (progressive)	Note 2) Note 4)		
	Audio	<ul style="list-style-type: none">•codec Windows Media Audio 9 (maximum 2ch) Windows Media Audio 9 Professional (maximum 2ch)	Note 5)		
MPEG1 Note 6)	Video	Codec: MPEG-1 Video	Note 4)	.mpg .mpeg	
	Audio	<ul style="list-style-type: none">•Codec: MPEG-1 Audio layer2•Bit rate: Maximum 384 kbps•No. of channels: 2ch•Sampling grade: 16-bit/24-bit, 32 kHz/44.1 kHz/48 kHz			
MPEG2 Note 6)	Video	<ul style="list-style-type: none">•Bit rate Normal resolution (Up to 720 x 480): Maximum 20 Mbps High-resolution (1920 x 1080 or 1280 x 720): Maximum 35 Mbps•Maximum resolution 1920 x 1080 25p (progressive), 60i (interlace) 1280 x 720 60p (progressive)	Note 3) Note 4)	.mpg .mpeg .m2p .m2v .vob	
	Audio	<ul style="list-style-type: none">•Codec MPEG-1 Audio layer 2, MPEG-2 Audio layer 2, MPEG-1 Audio layer 3, MPEG-2 Audio layer 3•Bit rate Layer 2: Maximum 384 kbps Layer 3: Maximum 320 kbps•No. of channels: 2ch•Sampling grade 16bit/24bit, 32kHz/44.1kHz/48kHz			

Note 1) MP@HL (Main Profile, High Level): Up to 1280 x 720 30p or 1920 x 1080 25p
The following are not supported.

- Complex Profile
- Interface mode
- File created using the WMV9 BETA encoder
- WMV1 or WMV2

Note 2) MP@HL (Main Profile, High Level): Up to 1280 x 720 30p or 1920 x 1080 25p
AP@L3 (Advanced Profile, L3 Level): Up to 1920 x 1080 50i or 1920 x 1080 25p or 1280 x 720 60p
The following are not supported.

- Complex Profile
- File created using the WMV9 BETA encoder
- WMV1 or WMV2

Note 3) MP@HL (Main Profile, High Level): Up to 1920 x 1080 25p or 1920 x 1080 60i or 1280 x 720 60p

Note 4) Files that include copyright protection function cannot be played.

Movies with (movie file size (Byte)/Play Time (seconds)) x 8bit > Maximum bit rate cannot be displayed.

Note 5) WMA files recorded in Windows Media Audio Lossless are not compatible.

Note 6) The movie files that are not compatible with the written specifications will be skipped and the next movie file will be displayed. If there are no other movie files that can be displayed, an error message is displayed. And if the codec of the video is compatible to the specifications, and the audio codec is not compatible, the video is displayed but the audio is not output.

Note 7) It differs depending on the format of the SD memory card.
The enclosed memory card is format to FAT16.

(2) Still image file

Type	Details	Extension	Resolution
JPEG	Supports baseline JPEG	.jpeg, .jpg	<ul style="list-style-type: none"> • One image/screen Maximum 2047 x 2047 dots • Two images/screen Maximum 1920 x 1080 dots or 1080 x 1920 dots
PNG	Supports RGB 24 bit format	.png	
BMP	Supports 24 bpp (bit/pixel) Does not support 8 bpp, 16 bpp, or 32 bpp.	.bmp	

(3) Audio file

Type	Details	Extension
MP3	<ul style="list-style-type: none"> •Codec MPEG-1 Audio layer 2, MPEG-2 Audio layer 2, MPEG-1 Audio layer 3, MPEG-2 Audio layer 3 •Bit rate Layer 2: Maximum 384 kbps Layer 3: Maximum 320 kbps •No. of channels: 2ch •Sampling grade 16bit/24bit, 32kHz/44.1kHz/48kHz 	.mp3

WEEE Mark (European Directive 2002/96/EC)



Within the European Union

EU-wide legislation, as implemented in each Member State, requires that waste electrical and electronic products carrying the mark (left) must be disposed of separately from normal household waste. This includes monitors and electrical accessories, such as signal cables or power cords. When you need to dispose of your NEC display products, please follow the guidance of your local authority, or ask the shop where you purchased the product, or if applicable, follow any agreements made between yourself and NEC.

The mark on electrical and electronic products only applies to the current European Union Member States.

Outside the European Union

If you wish to dispose of used electrical and electronic products outside the European Union, please contact your local authority so as to comply with the correct disposal method.

Software license information

This product contains open source software. For the use conditions of the open source software, refer to the following. Also, refer to the official website of each open source software.

GNU Lesser General Public License (“GNU LGPL”): (“Software license information.pdf” p.3 - p.16)

- DirectFB

GNU General Public License version 2 (“GNU GPL v.2”): (“Software license information.pdf” p.17 - p.26)

- The Linux operation system kernel
- BusyBox
- FreeType
- Wget
- Linux fusion
- Dosfstools

Refer to the page below for information on the license for the following software.

- | | |
|-------------------------------|--|
| •Intel® SDK for UPnP™ Devices | (“Software license information.pdf” p.27) |
| •Net-SNMP | (“Software license information.pdf” p.28 - p.34) |
| •Thttpd | (“Software license information.pdf” p.35) |
| •Pure-FTPd | (“Software license information.pdf” p.36) |
| •Libjpeg | (“Software license information.pdf” p.37 - p.39) |
| •Libpng | (“Software license information.pdf” p.40 - p.43) |
| •TinyXML | (“Software license information.pdf” p.44) |

Refer to the page below for information on the copyright for the following software.

- | | |
|----------|---|
| •Ntpdate | (“Software license information.pdf” p.45) |
|----------|---|

The software above each has a copyright owner..

This product uses GPL/LGPL application software, and our customers reserve the right to obtain, alter and redistribute the source code of the software in question. Please refer to the URL below to obtain source codes.

<http://www.coretronic.com/digisign/691/index.html>