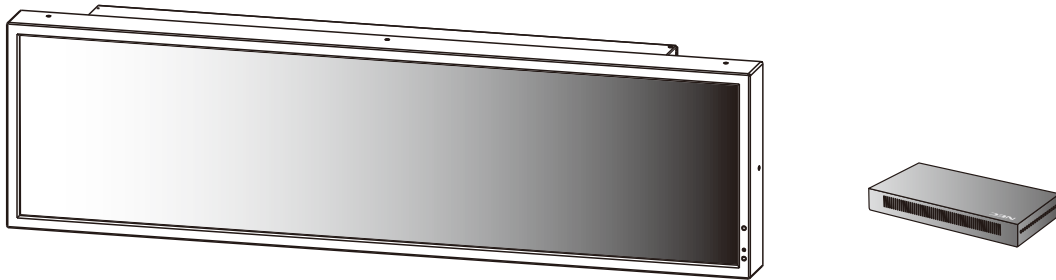


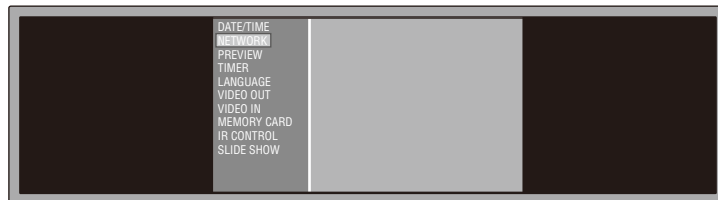
# Configuration for Using the X431BT\* (1920 x 480 Resolution Display) (1/3)

\* 43.1 inch LCD display



## 1. Configuring Media Player (MP-01)

- Connect the display (X431BT) to the MP-01 and then switch on both devices.
- Use the display remote to set the display aspect ratio to [NORMAL]. Note 1
- Use the MENU button of the MP-01 remote to display the OSD menu of the MP-01. Note 2

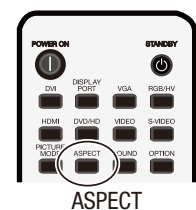


- Follow the [Settings] section in the MP-01 User's Manual to set the language, date/time, and video output.
- For [VIDEO OUT], select [DVI1920×1080@60].
- After closing the OSD menu, use the display remote to set the display aspect ratio to [TRIM]. Note 1

## 2. Setting The Aspect Ratio of the Display (X431BT)

Generally, use the display remote to set the aspect ratio to [TRIM]. When opening the OSD window of the MP-01, temporarily change the aspect ratio to [NORMAL] using the display remote. After closing the OSD menu, return the setting to [TRIM]. Note 1, 3

- Note 1: Use the aspect ratio button [ASPECT] of the display remote to select the aspect ratio. After pressing the [ASPECT] button, the status appears in the upper right area of the window.
- Note 2: The aspect ratio must be set to [NORMAL] to correctly display the OSD menu of Media Player.
- Note 3: The aspect ratio must be set to TRIM to correctly display the program display (including the preview display) of Media Player. The bottom half of the window is black in those cases.



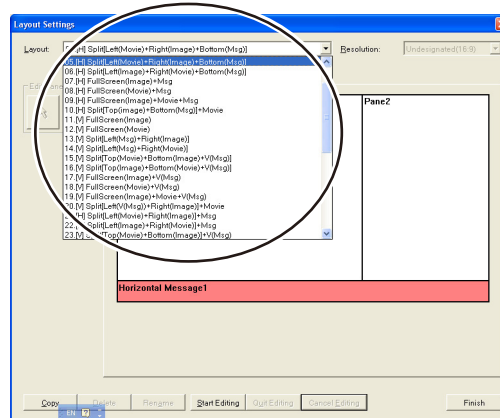
## 3. Preparing the 1920 x 480 Layout with the authoring software

When creating programs using the authoring software, it is necessary to change the layout resolution to 1920 x 480. See the next page for this procedure.

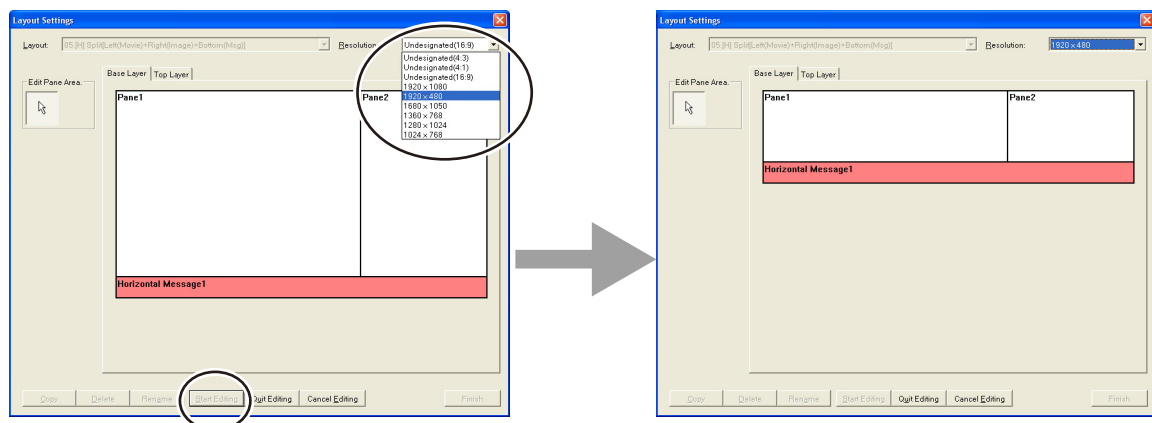
# Configuration for Using the X431BT\* (1920 x 480 Resolution Display) (2/3)

## Creating a 1920 x 480 layout using the authoring software (Supplement to Part (3) on the previous page)

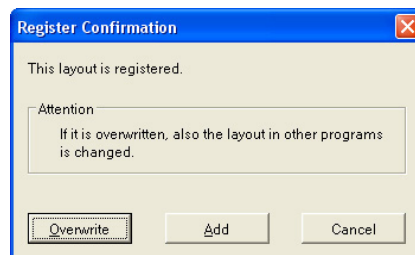
At the main window, click [Layout settings] -> [Layout], then select the layout to be used.



Click [Start Editing] -> [Resolution], then select [1920×480] or [Undesignated (4:1)].



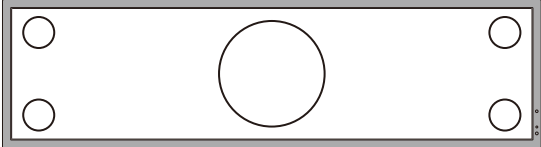


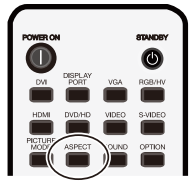
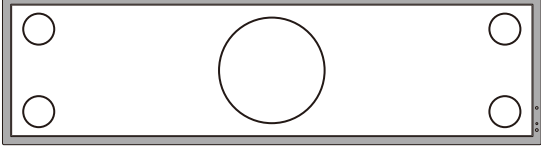
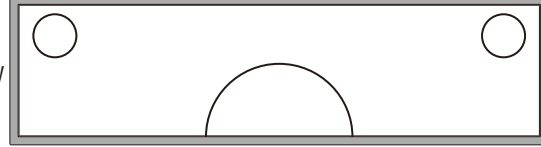
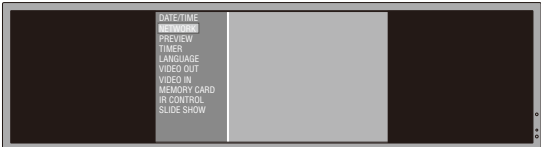

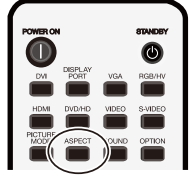

After editing the layout as necessary, click the [Quit Editing] button. From the dialog box below, click [Overwrite] or [Add].



Click [Finish] to confirm the layout settings and register the program.

# Configuration for Using the X431BT\* (1920 x 480 Resolution Display) (3/3)

## Troubleshooting

Problem	Condition	Cause and Remedy
The Media Player program is not displayed correctly on the display (X431BT)	<p>The lower half of the display area is black.</p> <p>Example of normal display</p>  <p>Example of incorrect display</p>  <p>Example of incorrect display</p> 	<p>Use the ASPECT button of the display remote to set the aspect ratio of the display (X431BT) to [TRIM].</p>  <p>ASPECT</p>
	<p>The bottom half of the window is not displayed for the program display.</p> <p>Example of normal display</p>  <p>Example of incorrect display</p> 	<p>The layout resolution setting for a program created using the authoring software is incorrect.</p> <p>Set the layout resolution setting of the program to [1920 x 480] or [Undesignated(4:1)]</p> <p>See page 2.</p>
The OSD menu of Media Player is not displayed correctly on the display (X431BT).	<p>The bottom half of the OSD window is not displayed.</p> <p>Example of normal display</p>  <p>Example of incorrect display</p> 	<p>Use the ASPECT button of the display remote to change the aspect ratio of the display (X431BT) to [NORMAL]. When the OSD menu is closed, return the setting to [TRIM].</p>  <p>ASPECT</p>
The start window of Media Player is not displayed correctly on the display (X431BT).	<p>The bottom half of the start window is not displayed.</p> 	<p>This problem occurs because the aspect ratio of the display (X431BT) is set to [TRIM]. There is no problem so continue as normal.</p>