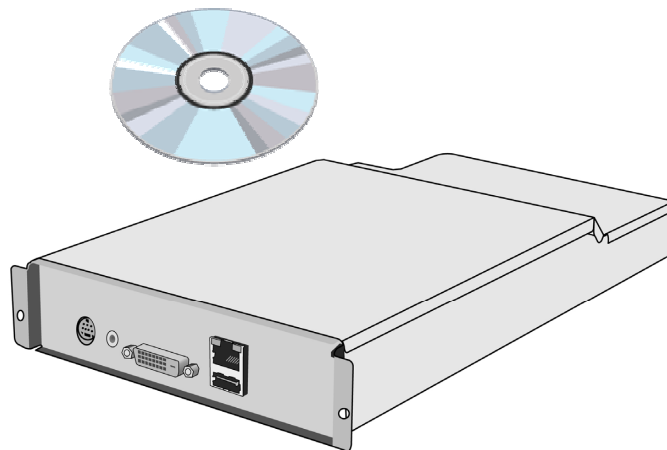


Media Player SB-L008KU

Quick Reference Guide

Version 1.1



NEC Display Solutions, Ltd.

Notes

The windows in the actual software may differ somewhat from those shown in this manual.

No part of the contents of this manual may be reproduced or copied by any means without prior written permission from NEC Display Solutions, Ltd.

Microsoft, MS, Windows(R), PowerPoint(R), Windows Media(R), Internet Explorer(R), and the Internet Explorer(R) logo are either registered trademarks or trademarks of Microsoft Corporation in the US and other countries.

Table of Contents

■ Setting of the Media Player and Display

● Setting the Media Player	2
● Display settings	2

■ USB Memory Procedures

● Introduction	4
● Authoring Software Usage Procedure	4
● Installing the Authoring Software	5
● Running the Program (Main Window)	7
● Configuration	8
● Practice	8
● Editing Messages	9
● Editing Programs	10
● Content Registration	11
● Message Registration	12
● Schedule Management	13
● Panel Control (Power supply settings)	14
● Distribution	15
● Copying Program Data to the MP-01 Media Player' s Memory Card ...	16

■ Network Procedures

● Introduction	18
● Operation flowchart	18
● Connecting to the LAN	19
● Media player network setup	19
● Registering Media Players in the Authoring Software	20
● Distribution	22
● Screens on the Display Unit	23

■ Operations Using the Supplied Software

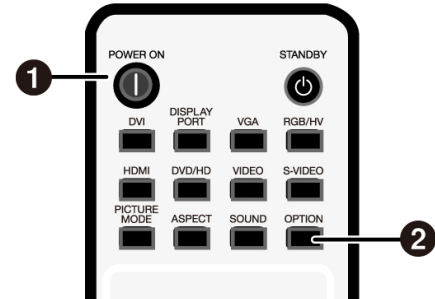
● Installing the Viewer PPT Converter	25
● Using the Viewer PPT Converter	27

Setting of the Media Player and Display

Set followings after installing Media Player to the display.

Setting the Media Player

1. Turn on the main power supply of the display.
2. Press the "POWER ON" button of the remote control to switch the display on.
3. Press the "OPTION" button of the remote control to select "OPTION" for video input. The Media Player will start up in approximately 1 minute.
4. After the Media Player has started, press the "OPTION" key to display the OSD Menu of Media Player, and carry out settings ① to ④.



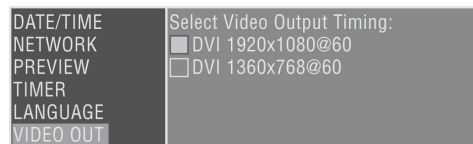
① LANGUAGE setting

Select the language for the OSD menu.



③ VIDEO OUT

Set the "VIDEO OUT" to select the optimal image resolution for the display.



② DATE/TIME setting

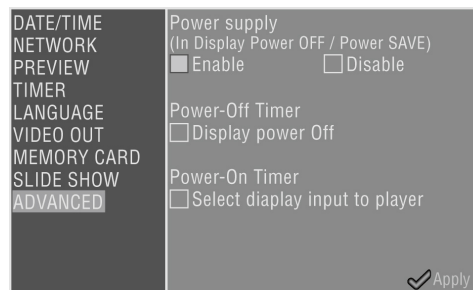
Set the date and time and select the "Apply" button.



④ Media Player's Power supply

From the "ADVANCED" menu, set the power supply to "Enable" and select the "Apply" button.

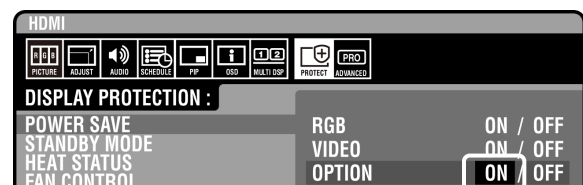
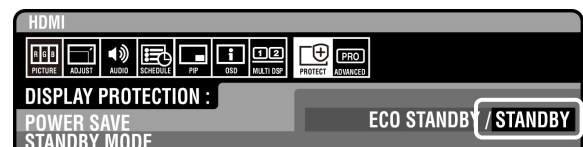
* The factory default setting is "Do not supply".



Display settings

Perform steps ⑤ to ⑨.

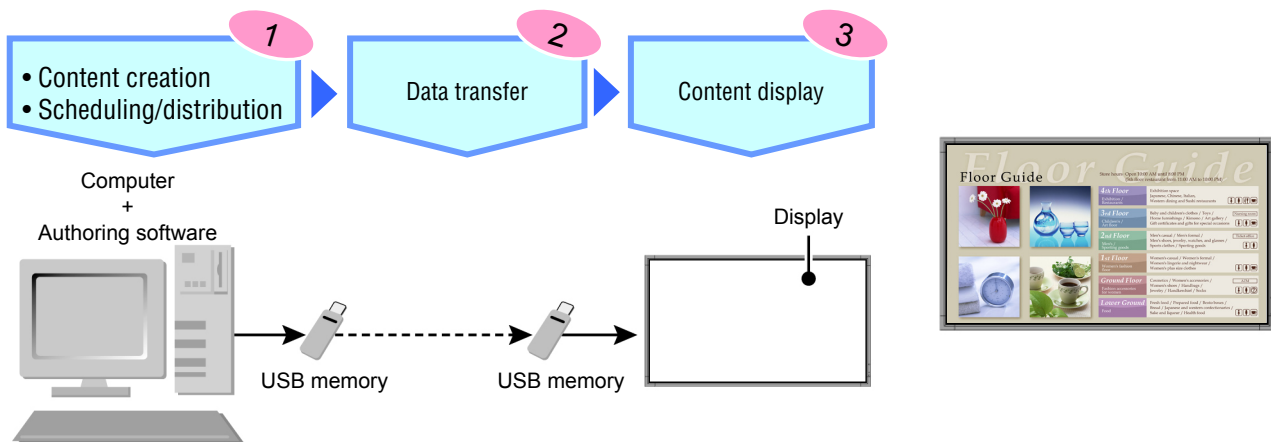
- ⑤ Switch the display power OFF and then ON again.
- ⑥ Open the display's OSD screen with the "MENU" button.
- ⑦ Select "STANDBY" from "STANDBY MODE" in the "DISPLAY PROTECTION".
- ⑧ Select "POWER SAVE" from "DISPLAY PROTECTION", and select "ON" from "OPTION".
- ⑨ Close the OSD screen with the MENU button.



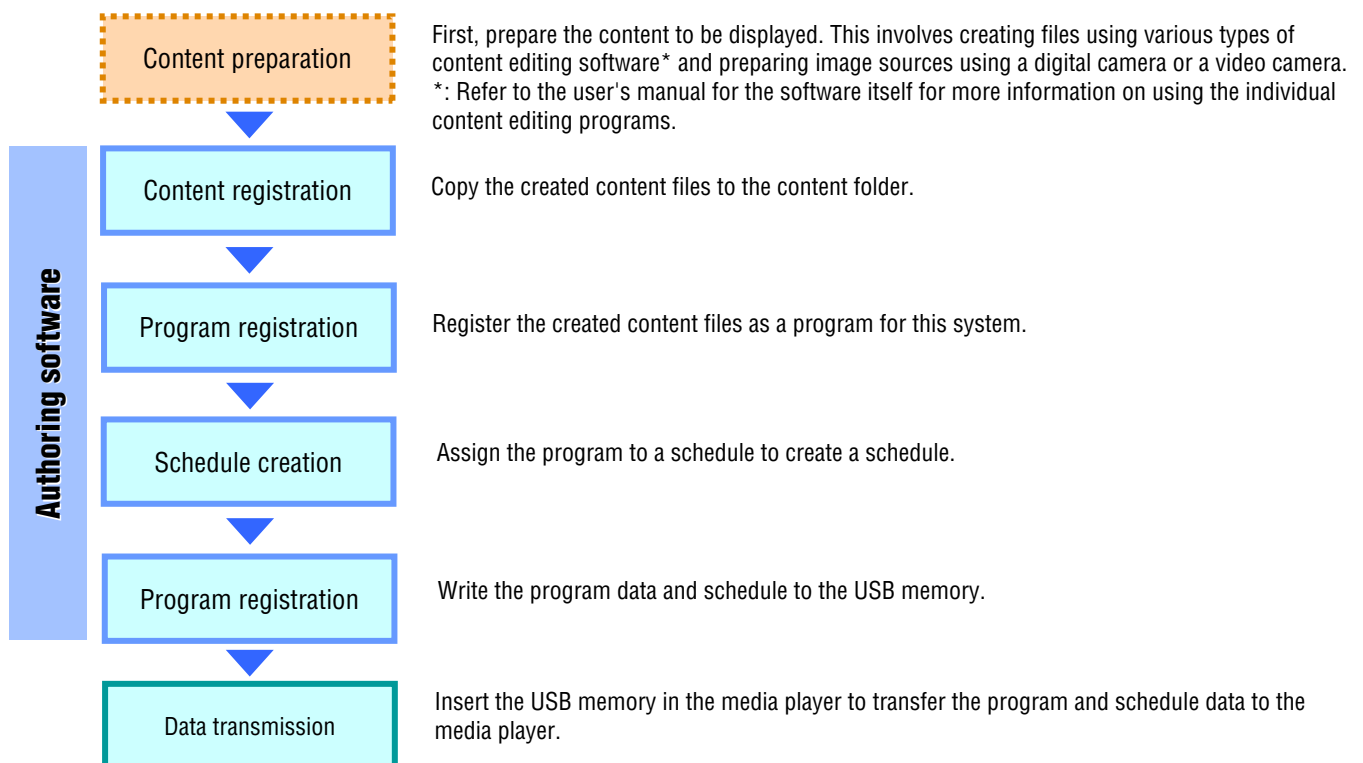
USB Memory Procedures

Introduction

Programs are created with the provided Authoring software and distributed using USB memory. This document describes the operations from creating a program with the Authoring Software through displaying that program using a media player.



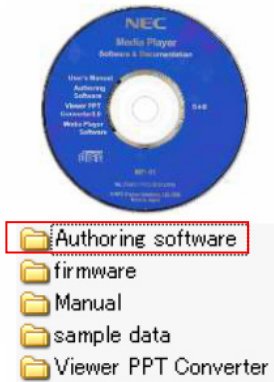
Authoring Software Usage Procedure



Installing the Authoring Software

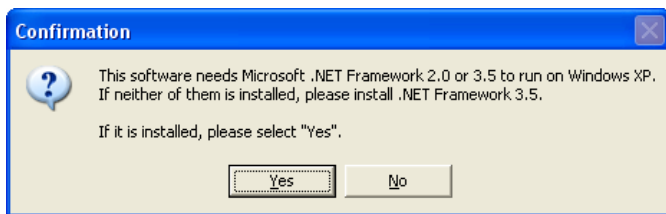
Included CD

Time required for installation: About 5 minutes



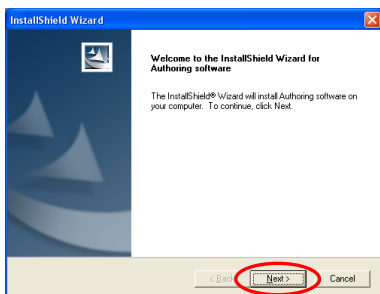
◆ Insert the CD provided with the media player in the personal computer onto which the software is to be installed.

◆ Run the file "setup" in the "<Authoring Software> / <ENG>" folder on the provided CD.

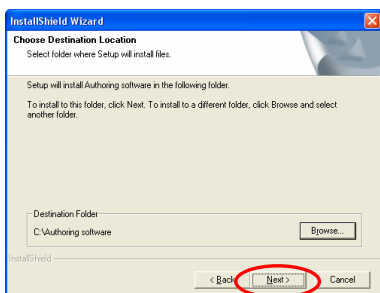


◆ In case you use Windows XP, confirm that Microsoft .NET Framework 2.0 or 3.5 is already installed. If either one is not installed, select "No", then start the installation from Microsoft Windows Update. *Note 1)

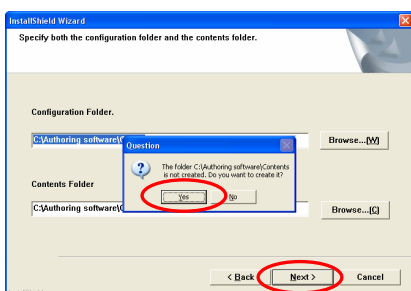
It is already installed in Windows Vista, Windows 7.
(When it is not installed, this software finishes with error.)



◆ Follow the directions displayed and click "Next".

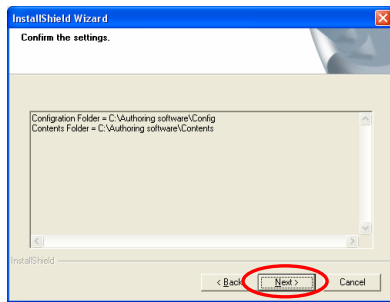


◆ Specify the folder in which the software should be installed.
*: Default: C:\Authoring software
Click "Next" to use the default folder

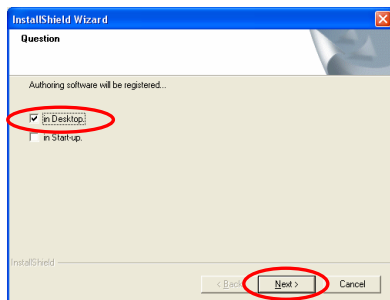


◆ Follow the directions displayed and click "Yes".

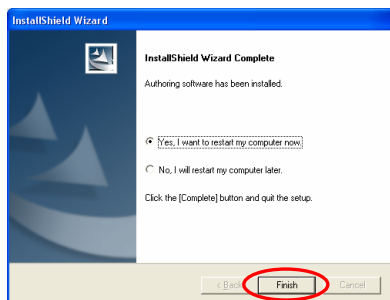
*Note 1) Refer to the Authoring software operation manual for details on installation confirmation and method.



- ◆ Follow the directions displayed and click "Next".



- ◆ Select the "In Desktop" check box and click "Next".



- ◆ This completes installation of the Authoring software.
*: Reboot the PC.



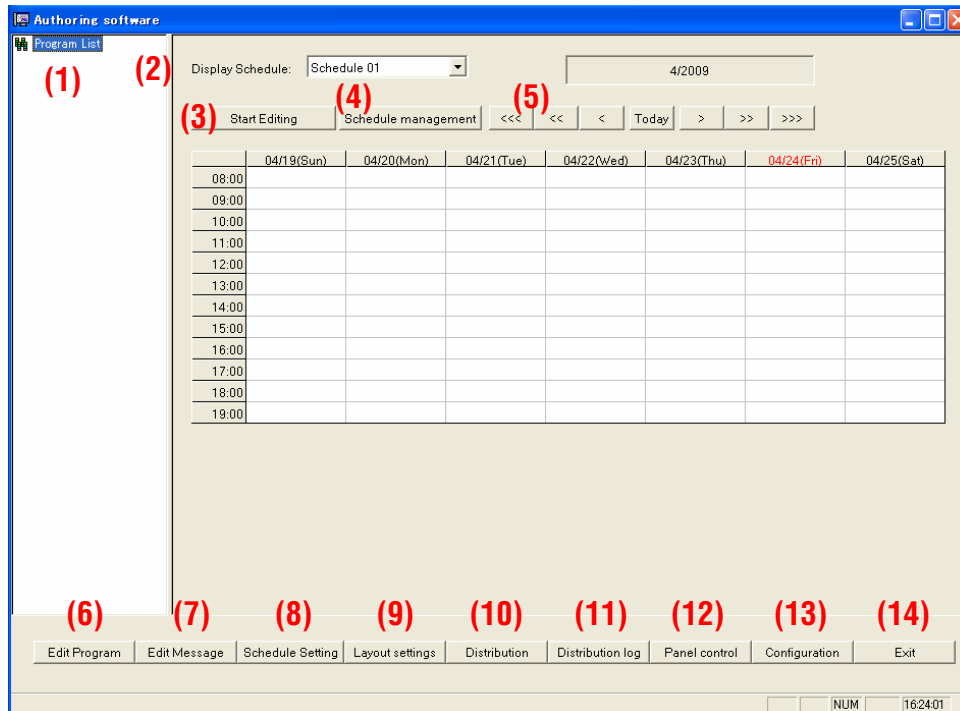
- ◆ After the PC has rebooted, verify that the "Authoring software" icon shown at the left has been created on the desktop.

Running the Program (Main Window)



Start the program by clicking the "Authoring software" icon on the desktop.

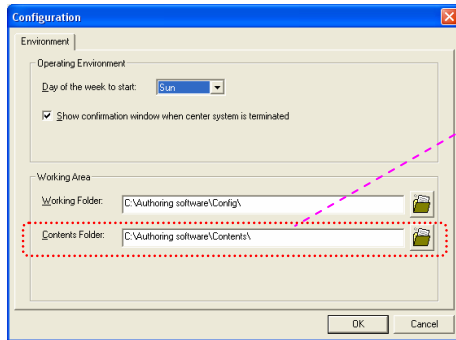
When the "Authoring software" starts, the main window shown below will be displayed.



- | | |
|-------------------------------|--|
| (1) Program List | Displays a list of the registered programs. |
| (2) Display Schedule | Switches to the schedule sheet displayed in the list box. |
| (3) Start Editing | Starts or stops editing of the displayed schedule. |
| (4) Schedule management | Sets the schedule information. |
| (5) Schedule shifters | These shift the schedule in month, week, or day units. |
| (6) Edit Program | Edits the program information. |
| (7) Edit Message | Edits the message information. |
| (8) Schedule Setting | Registers a program in a schedule. |
| (9) Layout settings | Creates and edits a layout. |
| (10) Distribution | Distributes (writes to USB memory) schedules and programs. |
| (11) Distribution log | Verifies the results of distribution operations. |
| (12) Panel control | Selects a schedule to be used by the media player. |
| (13) Configuration | Configures the center system operating environment. |
| (14) Exit | Terminates the center system. |

Configuration

First, configure the system's operating environment. Click "Configuration" in the [Main] window.

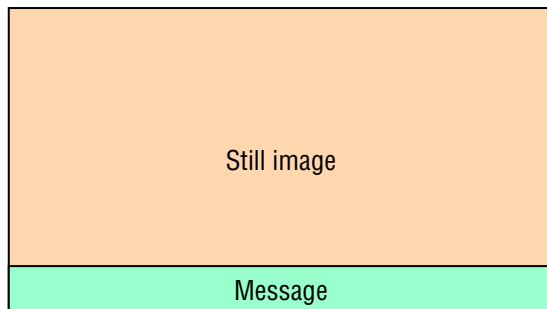


* The content data created with a content editor must be stored in this folder in advance. You may find it convenient to create a link to the "content" folder on the desktop.

* Since the default settings (shown at the left) are set up at installation, there will be no need to change these unless the specified folder or other settings need to be changed.

Next we present the procedure for creating the following program and copying it to the media player on the computer using the Authoring software.

Practice



- Layout type
[Horizontal] Split [Top (Image) + Bottom (Message)]
- Display the program from 8:00 am until 6:00 pm every day and turn off the power at all other times.
- On Wednesday every week, leave the power turned off all day.

- * In this example, we will use the practice sample data stored on the provided "Utility CD".
- * The data for the following three still images is stored in the ¥sample data directory on the "Utility CD".

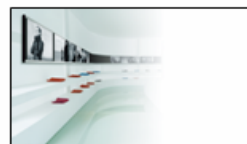
sample01



sample02

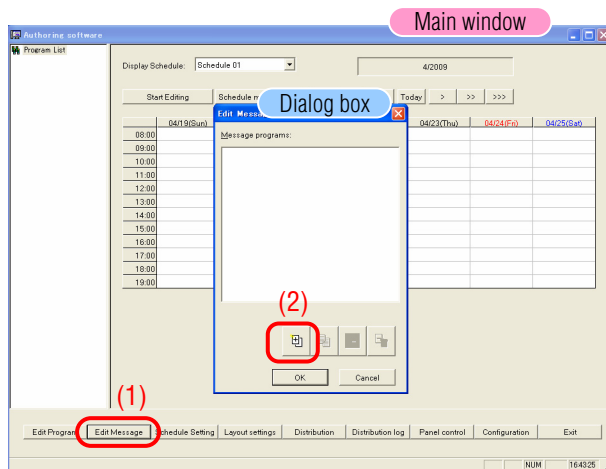


sample03



- * Please copy the above three images to the "Contents" folder in advance.

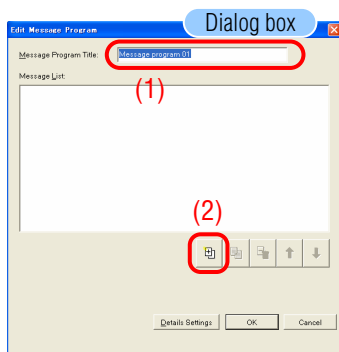
Editing Messages



◆ Click [Edit Message] in the main window.

◆ The <Edit Message List> dialog box will be displayed.

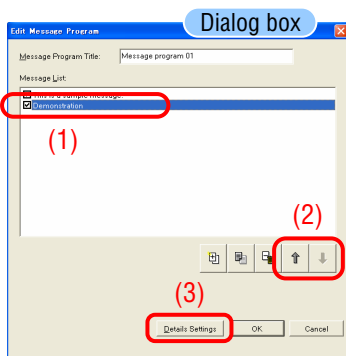
◆ Since we will create a new program, click the [+ (Add)] button.



◆ The <Edit Message Program> dialog box will be displayed.

◆ Change the "Message Program Title" for Message program 01 to "Sample Message".

◆ Since we are creating a new message program here, click the [+ (Add)] button.

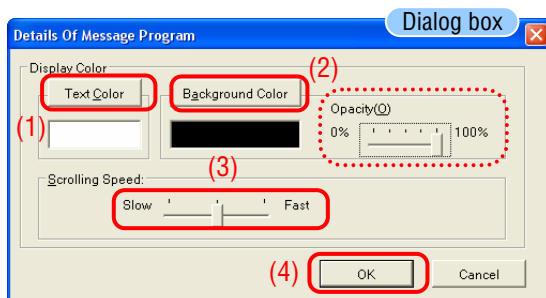


◆ Enter "This is a sample message".
You should also try clicking the [+ (Add)] button again to create multiple messages.

◆ The message display order can be changed with the up and down arrow buttons.

◆ Click [Details Settings].

◆ The <Message Program Details> dialog box will be displayed.



◆ The [Text Color] and [Background Color] buttons in the "Display Settings" dialog box allow these colors to be set to any color.

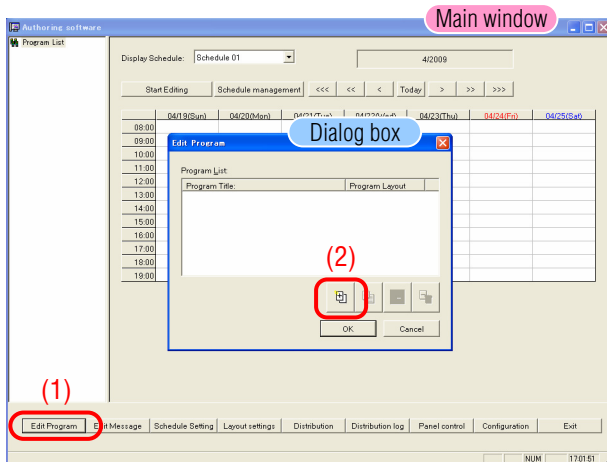
(The message background can be made transparent by selecting slide bar (100% : no transparent / 0% : transparent) "Opacity")

The "scrolling speed" can also be set to one of three levels.

◆ Exit from message editing by clicking [OK] and then clicking [OK] again.

*: The message and details settings will not be saved unless you click [OK].

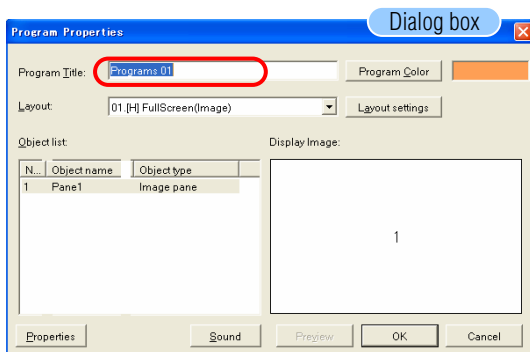
Editing Programs



◆ Click [Edit Program] in the main window.

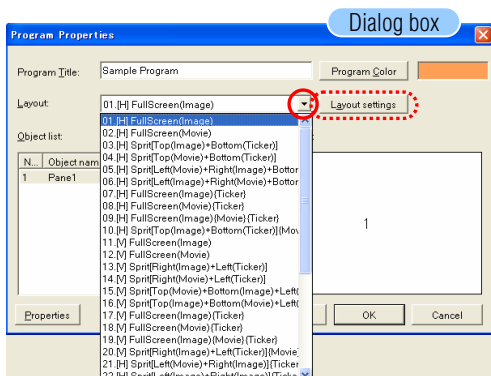
◆ The <Program List> dialog box will be displayed.

◆ Since we will create a new program here, click the [+ (Add)] button.



◆ The <Program Properties> dialog box will be displayed.

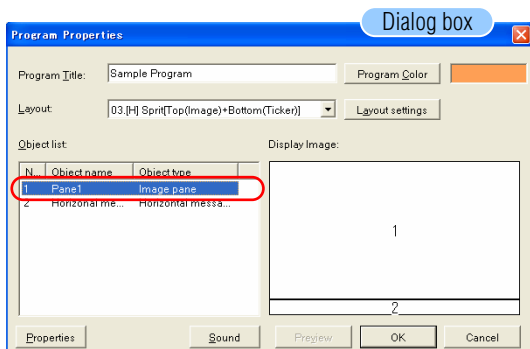
◆ Change the "Program Title" for program 01 to be "Sample Program".



◆ Change the layout from "01.[H] Full Screen (Image)" to "03.[H] Split [Top (Image) + Bottom (Ticker)]" using the "layout" button.

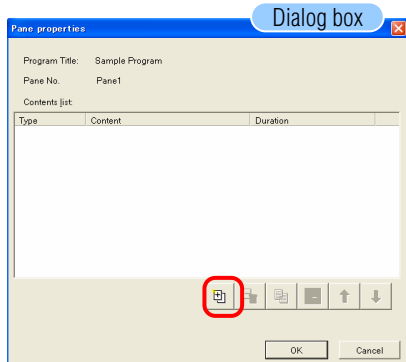
The display image (layout) will change to "Pane 1" and "Horizontal message 1".

* Any one of 36 layouts can be selected according to the pattern to be displayed. The fine-grained layout properties can also be set with the [Layout settings] function.



◆ Click the object name "Pane1 (image)".

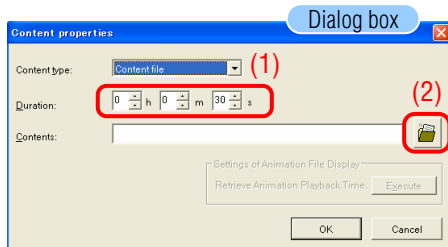
Content Registration



◆ The <Pane properties> dialog box will be displayed.

◆ Since we will register new content* here, click the [+ (Add)] button.

◆ The <Content properties> dialog box will be displayed.



◆ Set the "Duration*".

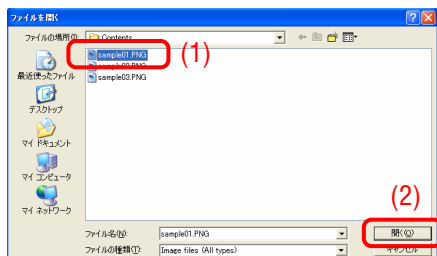
*: This is the time for a single content image to be displayed.

Since the default setting is "30" s, change this to "15" s.

◆ Click the folder icon



◆ The <File Open> dialog box will be displayed.

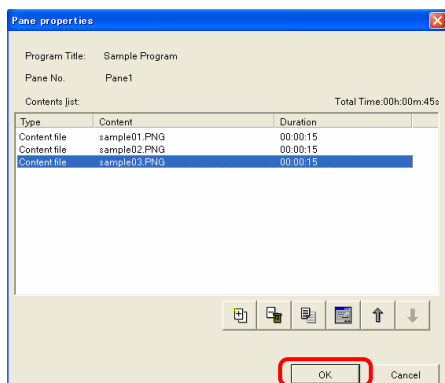


◆ The sample files (images) previously stored in the "Contents" folder will be displayed.

Select "Sample01" and click [Open].*

*: This button may also be double clicked.

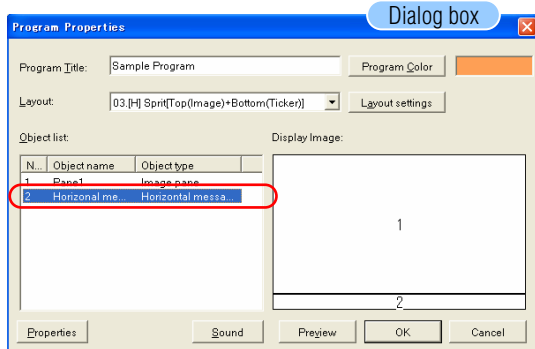
◆ Also add "Sample02" and "Sample03" using the same procedure.



◆ Click [OK] to save the content in "Pane 1".

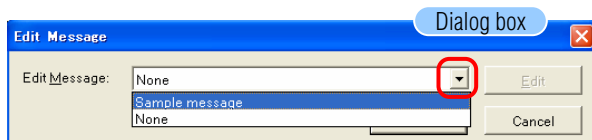
*: The content will not be saved unless you click [OK].

Message Registration



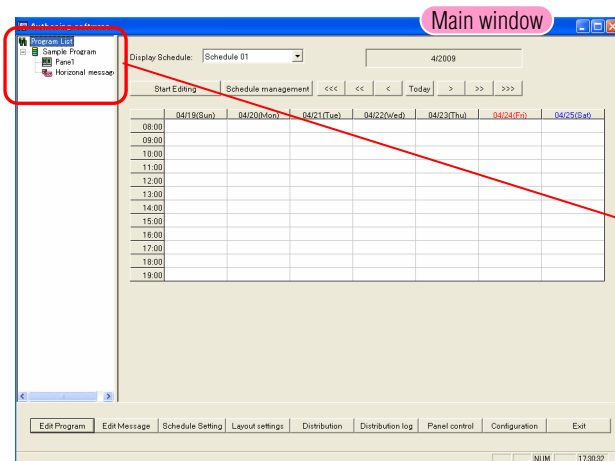
◆ Click on the object name "Horizontal message 1".

◆ The <Edit Message> dialog box will be displayed.

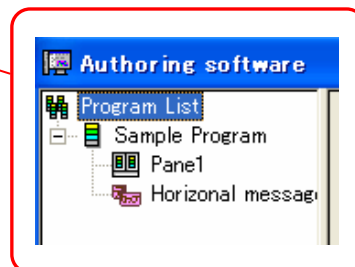


◆ Change the "None" for "Edit Message" to the previously created message program "Sample Messages".

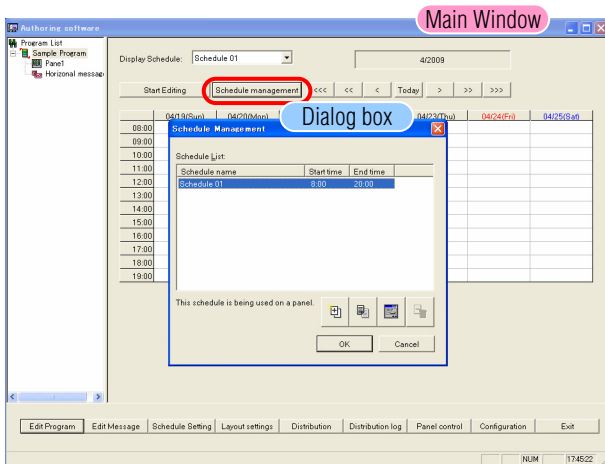
◆ Click [OK] to save the messages in "Horizontal message 1".
*: The content will not be saved unless you click [OK].



◆ Click [OK] and then click [OK] again to terminate program editing. This returns to the main window.

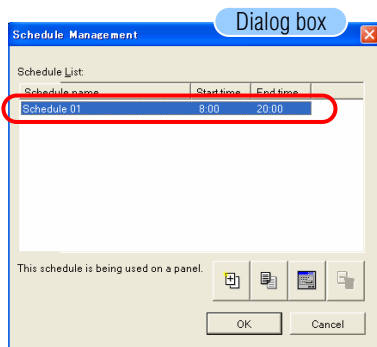


Schedule Management

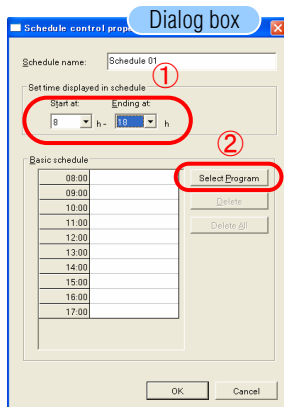


◆ Click [Schedule Management] in the main window.

◆ The <Schedule Management> dialog box will be displayed.



◆ Click "Schedule 01" in the "Schedule list".

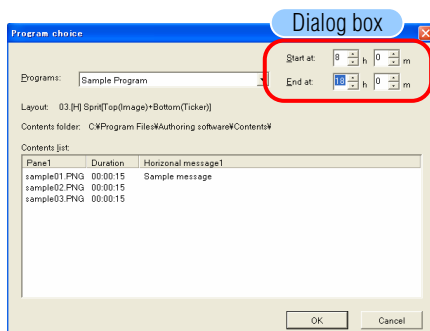


◆ The <Schedule control properties> dialog box will be displayed.

◆ Set the "Set time displayed in schedule settings" to "8:00 - 18:00".

◆ Click [Select Program].

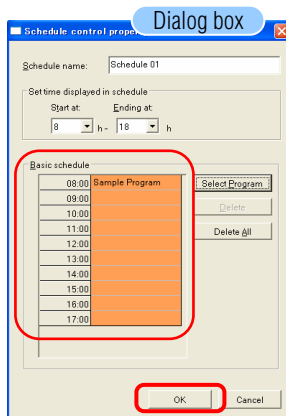
◆ The <Program choice> dialog box will be displayed.



◆ The "sample program(s)" registered previously will be shown in the list.

◆ Set the start and end times to "8:00 - 18:00".

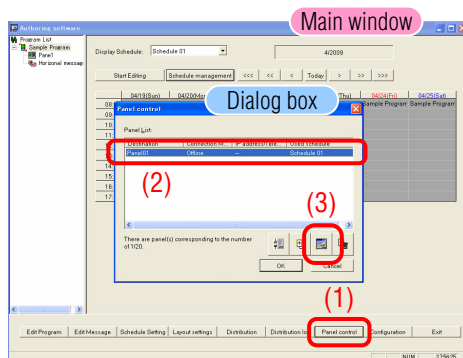
◆ Click [OK] to confirm the setting.



◆ The "sample program" is allocated to the "Basic schedule" setting time.

◆ Click [OK] to return to the <main window>.

Panel Control (Power supply settings)

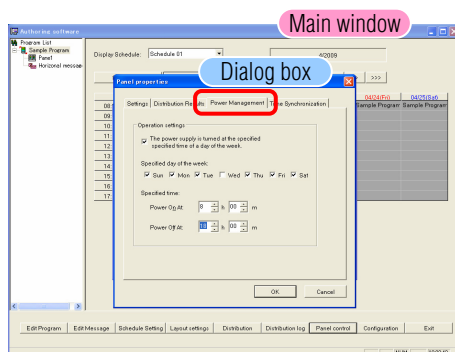


◆ Click [Panel control] in the <main window>.

◆ The <Panel properties> dialog box will be displayed.

◆ Click the  icon.

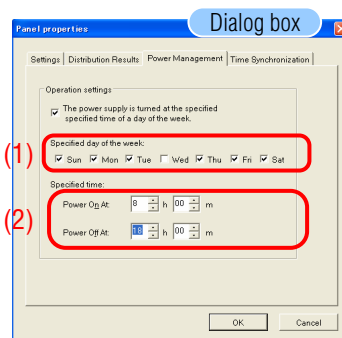
◆ The <Panel Properties> dialog box will be displayed.



◆ Click the "Power Management" tab.

◆ Select the "The power supply is turned on or off at the specified time on the specified day" check box.

◆ Select the days of the week other than Wednesday in the "Specified day of the week" under "Operation settings".
*: With these settings, the power will not be turned on or off on Wednesday.

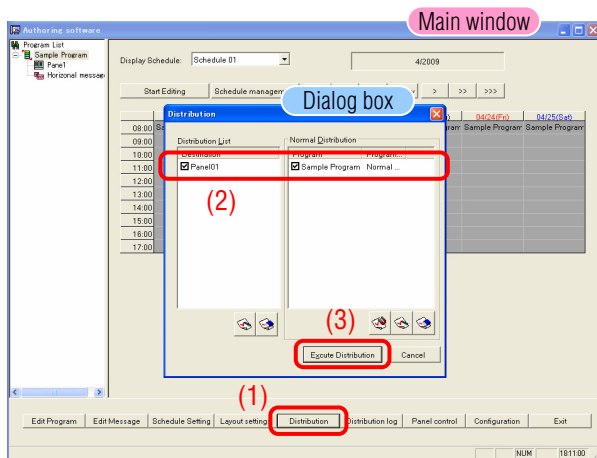


◆ The <Panel properties> dialog box will be displayed.

◆ Set the Power on and off times under "Specified time" to "8:00 - 18:00"

◆ Click [OK] to confirm the settings.

Distribution

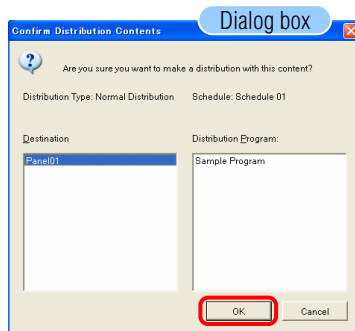


- ◆ Click the [Distribution] button in the <main window>.

- ◆ The <Distribution> dialog box will be displayed.

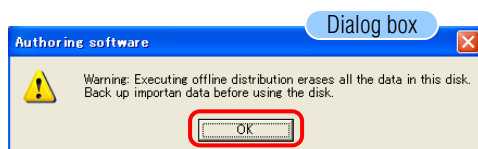
- ◆ Select the "sample program" by checking it.

- ◆ Click [Execute Distribution].



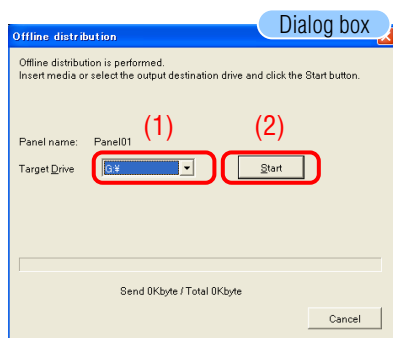
- ◆ The <Confirm Distribution Contents> dialog box will be displayed.

- ◆ Click [OK] to confirm the distribution.



- ◆ A <warning> dialog box will be displayed.
* When an execute distribution operation is performed, the previous data on the distribution USB memory will all be lost. Be sure to use a USB memory device that does not hold any valuable information.

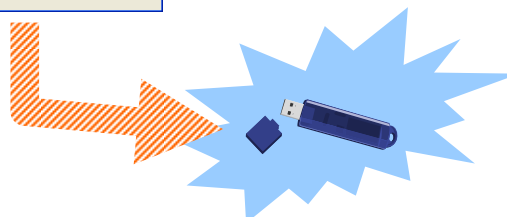
- ◆ Click [OK] to confirm the distribution.



- ◆ The <online distribution> dialog box will be displayed.

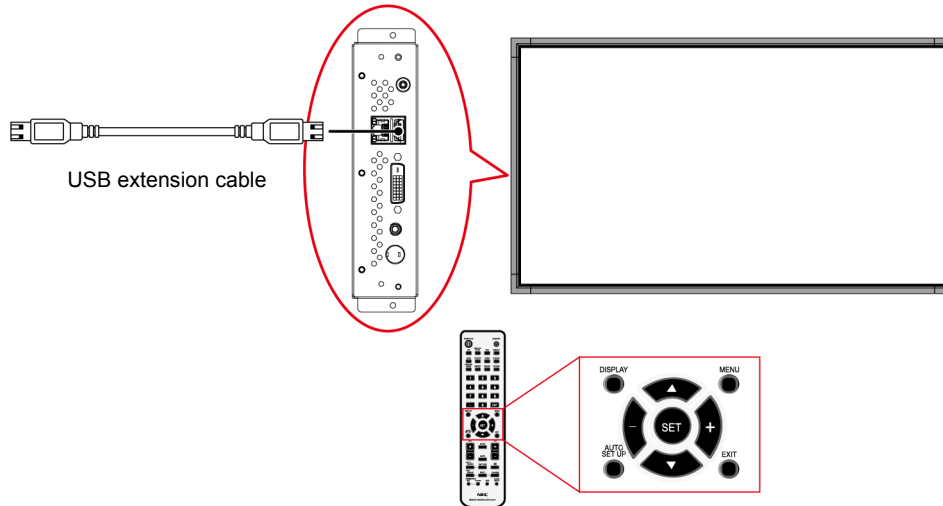
- ◆ Select the "target drive" for the inserted USB memory.

- ◆ Click [Start].



This completes the operations using the Authoring software.

Copying Program Data to the MP-01 Media Player's Memory Card



- Prepare a USB memory device that has the program data loaded.

Caution: The provided Authoring software's "Distribution" function must be used to copy the program data to the USB memory.

- Turn off the media player power by pressing the Standby button on the remote control and then insert the USB memory device that holds the program data into the media player.

Caution: If an update operation is performed, the program data in the media player will be overwritten. That is, the old program data will be lost.

- Turn on the media player power by pressing the Power button on the remote control. A confirmation screen for the update operation will appear on the screen. Press the SET button. The files on the USB memory device will be copied to the memory card in the media player.

Caution: If an update operation is performed, the program data in the media player will be overwritten. That is, the old program data will be lost.

- After the copy has completed, the media player will restart automatically. When the initialization of the media player itself has completed (this takes about 60 seconds), the update confirmation screen will be displayed again. Cancel this update operation by pressing the EXIT button.

- Remove the USB memory device from the media player.

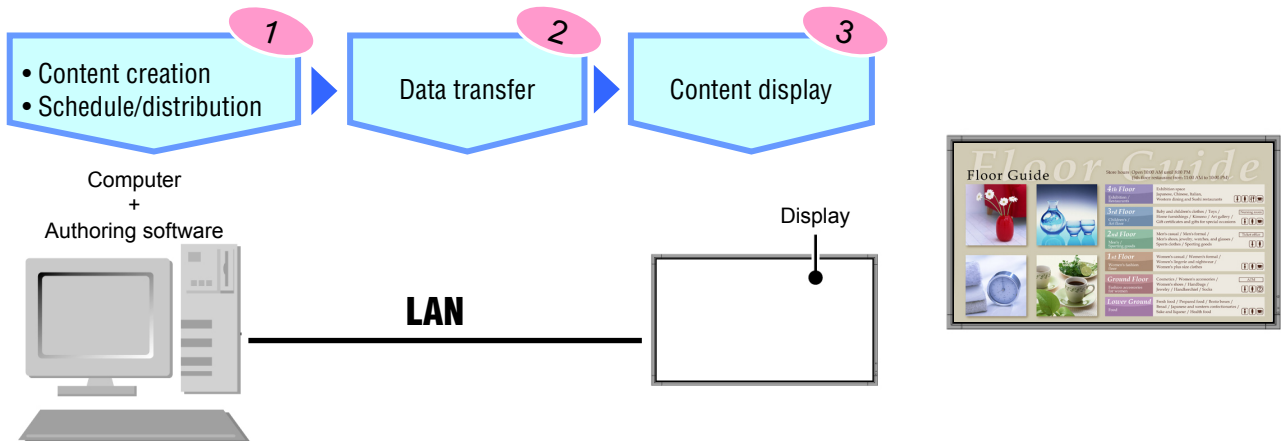
Caution: The maximum memory capacity for program data is 1.8 GB (when the provided SD card (2 GB) is used). The size of the content stored on the USB memory must not exceed this value when copying program data to the media player. The capacity of the memory card inserted in the media player can be verified with the "Memory Card" item on the OSD screen.

When the data capacity is 1.8 GB, the time required for the program data update will be approximately 15 minutes at most.

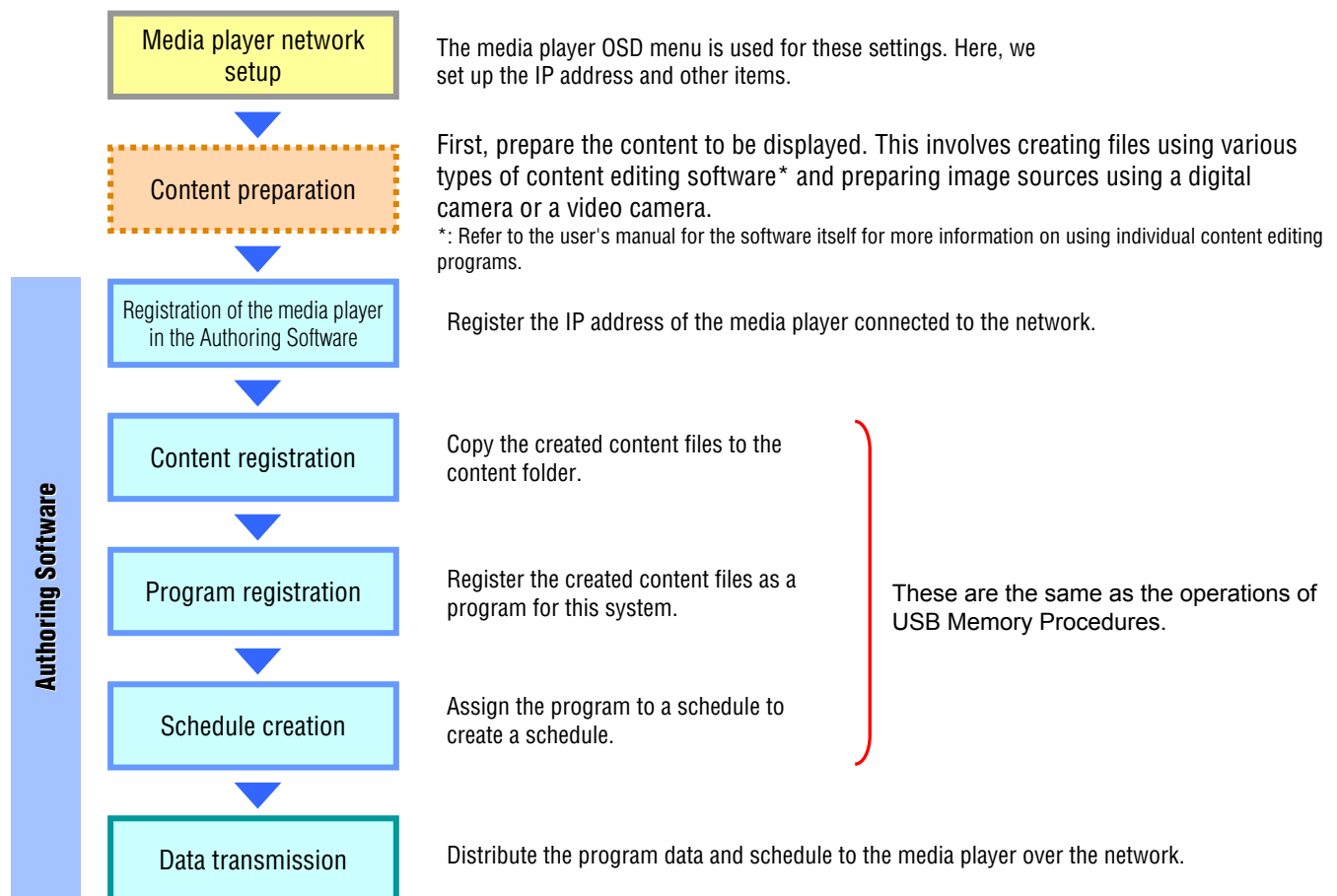
Network Procedures

Introduction

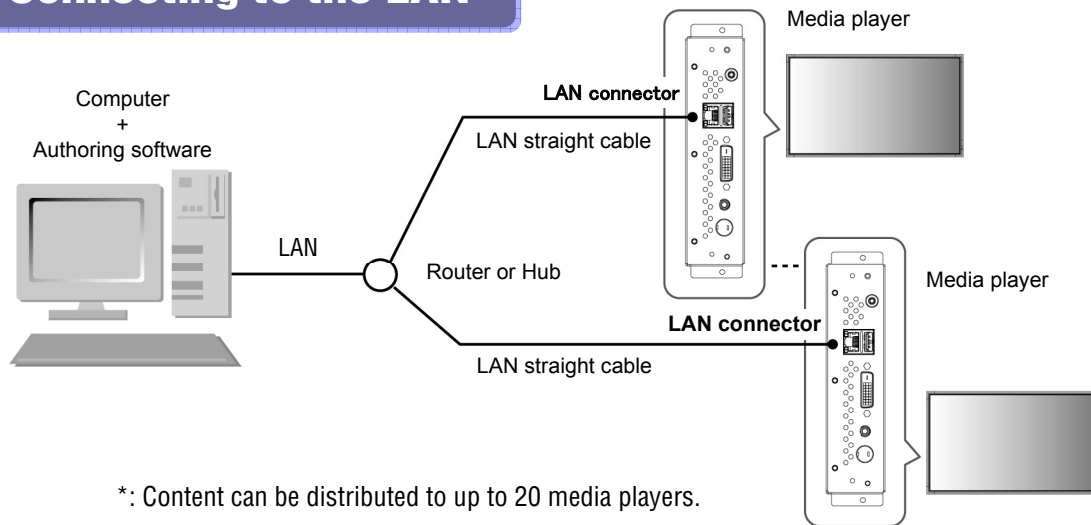
This tool is used to display program content that is created by combining images, audio, and other content. Programs are created with the provided Authoring Software and distributed over a network. This document describes the operations from creating a program with the Authoring Software through displaying that program with a player.



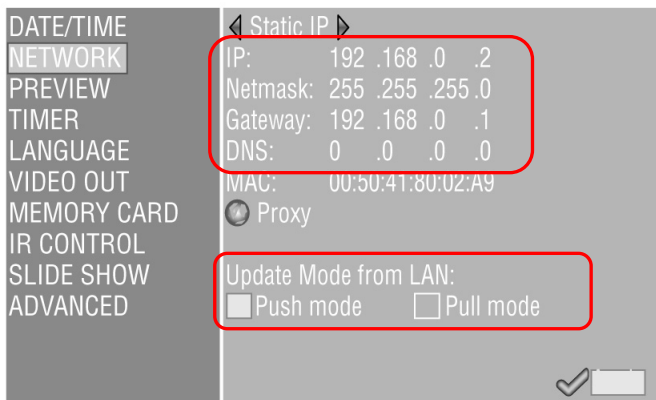
Operation flowchart



Connecting to the LAN



Media player network setup



- ◆ Turn on the media player.

- ◆ Press the OSD menu button on the remote control and, when the OSD menu is displayed, select "Network".

- ◆ Set the IP address and Netmask.

Sample settings

When the personal computer IP address is "192.168.0.3" and the Netmask is "255.255.255.0"

IP address: 192.168.0.2

Netmask: 255.255.255.0

- ◆ Set the gateway to 192.168.0.1 (the factory setting).

- ◆ Disable DNS (0.0.0.0).

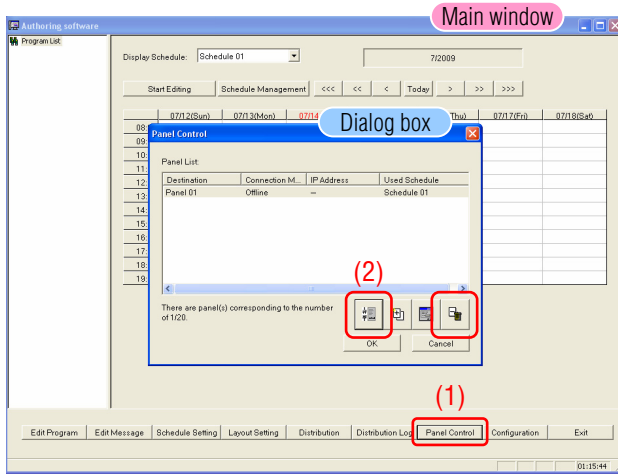
- ◆ Select "push mode" as the update method from the LAN.

- ◆ Click "Set".

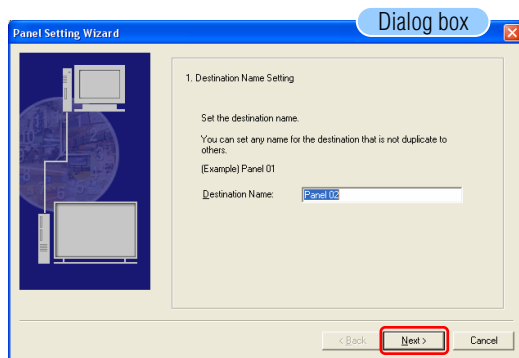
Installing and running the authoring software

See pages 3 and 4 in the "USB Memory Procedures" section.

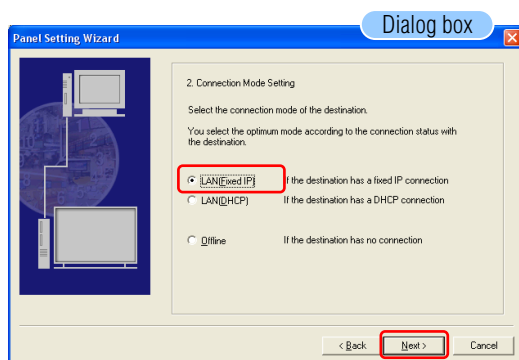
Registering Media Players in the Authoring Software



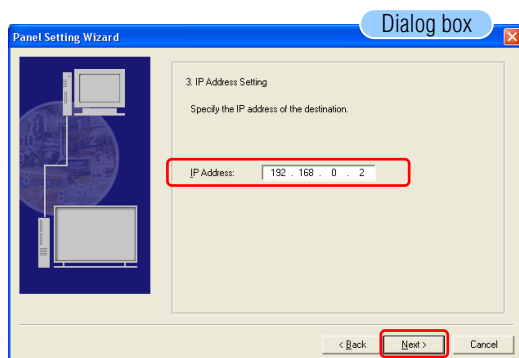
- ◆ Click <Panel control> in the main window.



- ◆ Click [Next].

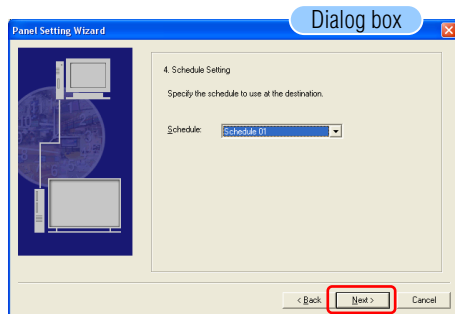


- ◆ Select LAN (fixed IP) and click [Next].

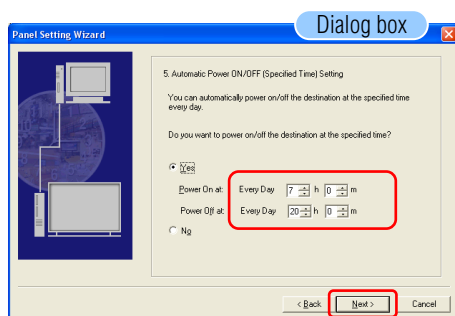


- ◆ Enter the media player's IP address and click [Next].

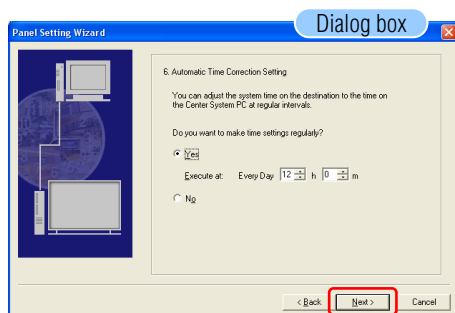
Registering Media Players in the Authoring Software (continued)



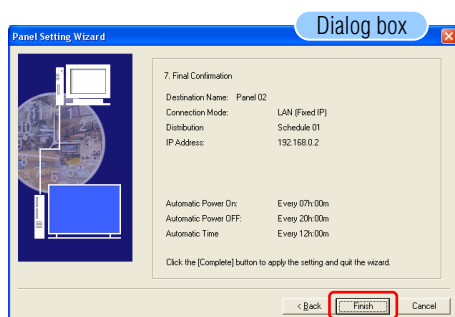
◆ Click [Next].



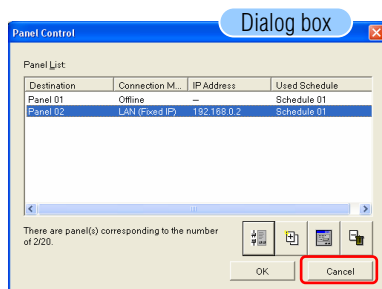
◆ Set the "player's power on time and off time" and click [Next].



◆ Set the "Automatic Time Correction" and click [Next].



◆ Click [Finish].

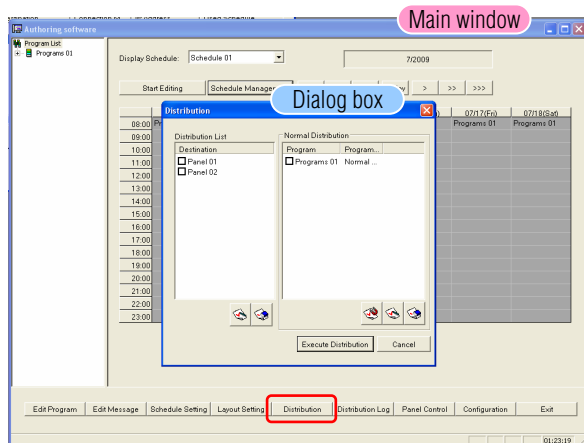


◆ Click [OK].

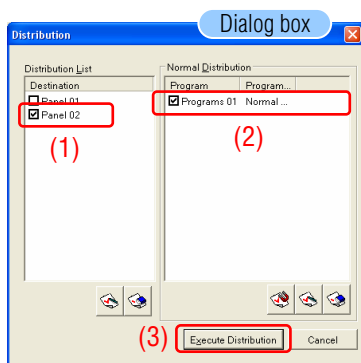
Registering Content/ Registering Program Data and Schedules

See pages 1 to 14 in the "USB Memory Procedures" section.

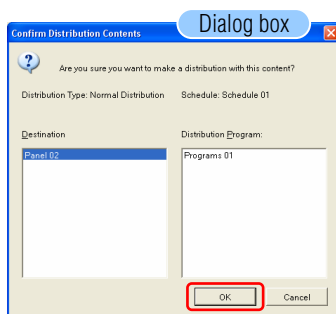
Distribution



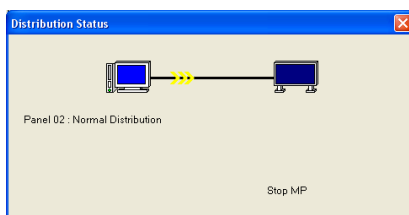
◆ Click [Distribute].



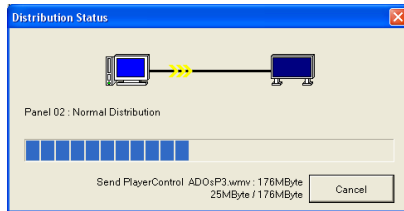
◆ Select the "distribution target" and the "program for distribution" and click [Execute Distribution].



◆ Click [OK].



◆ The Distribution dialog box will be displayed.



- ◆ The "Distribution Status" is displayed.

The data transfer from the PC to the media player starts.

Screens on the Display Unit

<Caution> The media player power must be turned ON when distributing data from the Authoring software.

Content Updating... Please do not power-off.

- ◆ A message saying "Content updating... Please do not power-off." will be displayed on the screen.

Note: No message will be displayed in the state where there is no display (black screen).

- ◆ When the data "distribution" completes, the media player will restart. The new program(s) will then start.

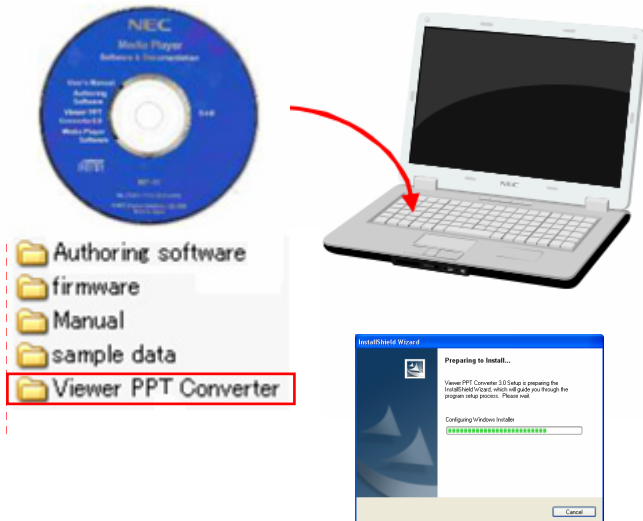
Note: No message will be displayed in the state where there is no display (black screen).

- ◆ The content will be displayed.



Operations Using the Supplied Software

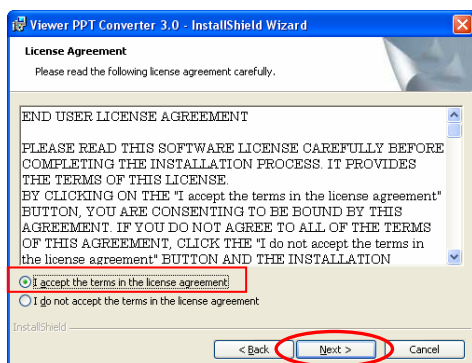
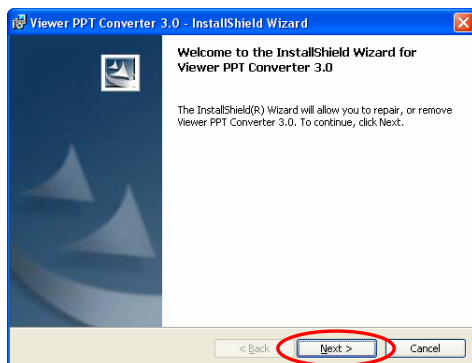
Installing the Viewer PPT Converter



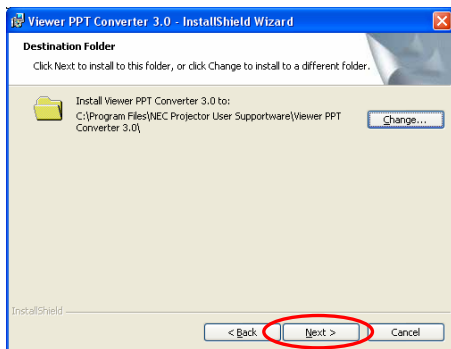
◆ Insert the disc with the Viewer PPT Converter provided with the MP-01 in the personal computer onto which it is to be installed.

◆ Run the file "setup.exe" in the "Viewer PPT Converter" folder in the provided CD.

◆ Follow the directions displayed and click "Next".

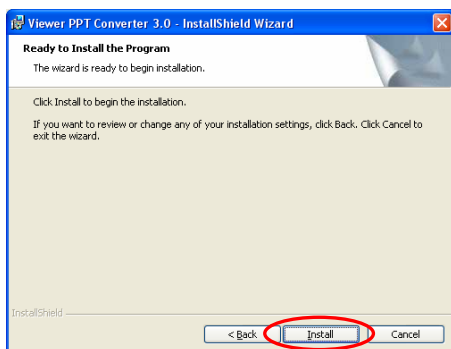


◆ The "End User License Agreement" dialog box will be displayed. Select "I accept the agreement" (A) and click Next.

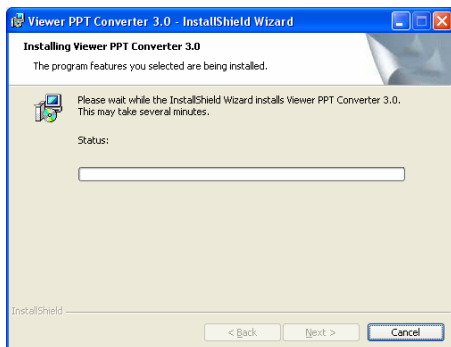


◆ Specify the installation folder.

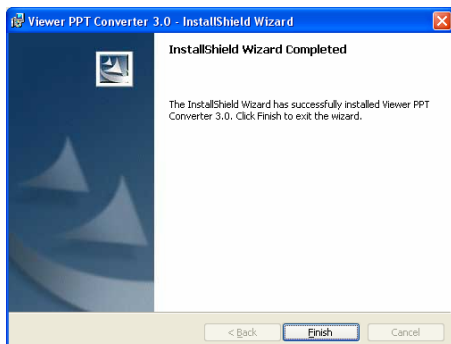
* Click "Next" to use the default folder, which is under C:\Program Files\.



◆ Follow the directions displayed and click "Next".



◆ Follow the directions displayed and select "Install".

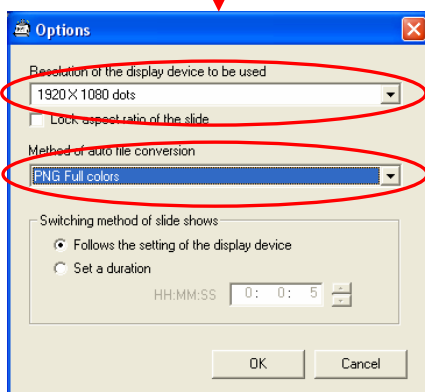
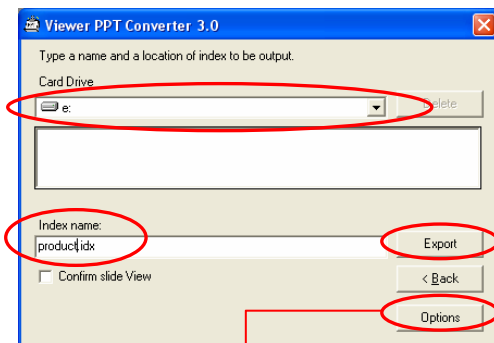
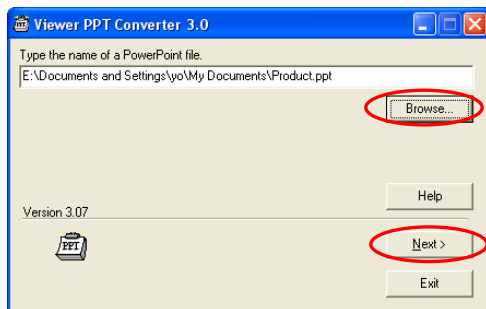


◆ This completes installation of the Viewer PPT Converter.



← You may find it convenient to create a link to this program on the desktop.

Using the Viewer PPT Converter



◆ Start Viewer PPT Converter.

◆ Select the PowerPoint file in which the content was created.

◆ Click "Next".

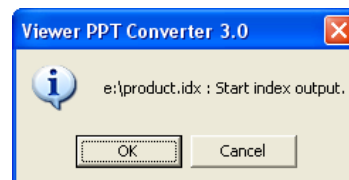
◆ Specify the drive to store the data.

◆ Enter "Index name".

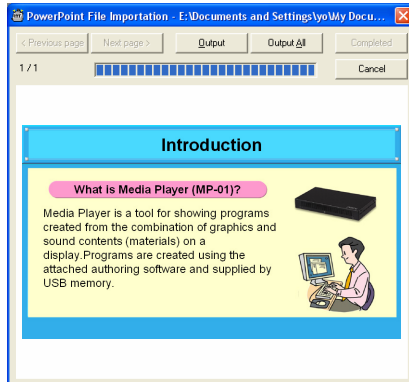
◆ Click "Options" and specify the output resolution.

◆ Specify the "automatic file conversion method" and click "OK".

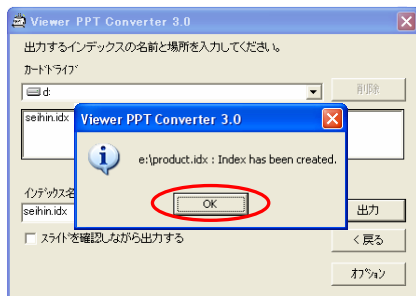
◆ Click "Output".



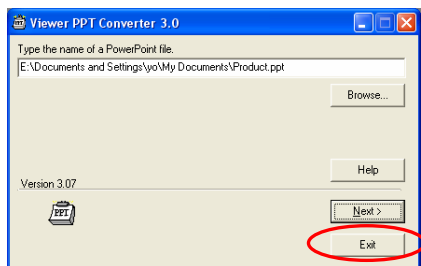
◆ Click "OK".



◆ Data conversion starts.



◆ When the message "Index created." is displayed, click "OK".



◆ Click "Exit".

◆ To create another index click "Next" and use the procedure from the previous page to create a new index.

Data created in d:\seiin folder



◆ The PPT data is converted and the data (PNG image) created in the specified folder is copied to the content folder for the Authoring Software.

Default

→ C:\Program Files\Authoring software\Contents\

SB-L008KU

Quick Reference Guide

December 01, 2009 – 4th edition

Edited and published by NEC Display Solutions, Ltd.

No part of the contents of this manual may be reproduced or copied by any means without prior written permission from NEC Display Solutions, Ltd.