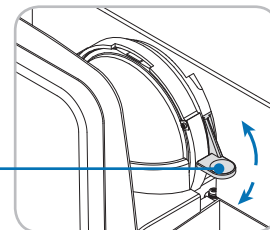
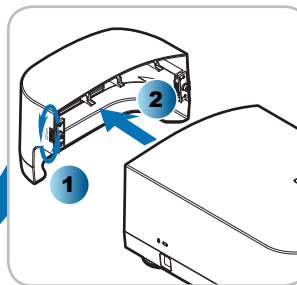
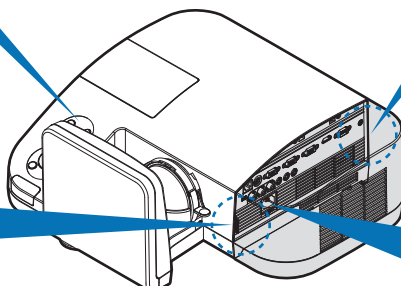
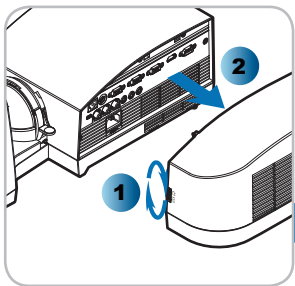


On/Off

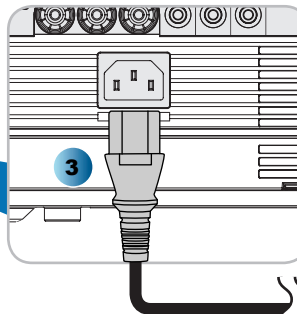
5



9

Adjust Focus
 Régler la mise au point
 Stellen Sie den Fokus ein
 Ajuste el enfoque
 Regolare la messa a fuoco
 Ajuste da focagem
 Justera fokus
 Настройте фокусировку
 調整焦距
 초점 조절
 Wyreguluj Ostrość
 Élességállítás
 Προσαρμογή Εστίασης
 Odağı Ayarla
 Pas de scherpstelling aan
 Juster Fokus
 Projektörin tarkennuksen säätö
 Juster fokus
 Upravít zaostření

ضبط البؤرة



To the wall outlet 4

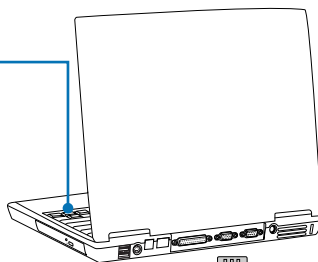
Fn + **F7 CRT/LCD**

Toggle Output Settings

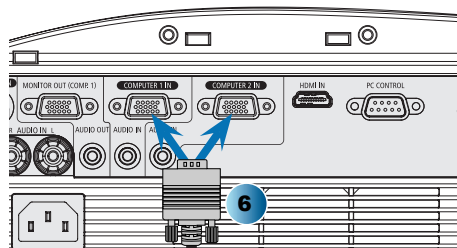
Compaq	[Fn] + [F4]
Dell	[Fn] + [F8]
Gateway	[Fn] + [F4]
Hewlett Packard	[Fn] + [F4]
IBM	[Fn] + [F7]
NEC	[Fn] + [F3]
Toshiba	[Fn] + [F5]

Macintosh Apple :
 System Preferences⇒Display⇒
 Arrangement⇒Mirror display

8



7



6



