

LT35/LT30/LT25 Quick Setup Guide

NEC

7N8P6161
Printed in Japan

©NEC Viewtechnology, Ltd. 2005
Ver. 1. 09/05

Step 1

Connect your computer to the projector.

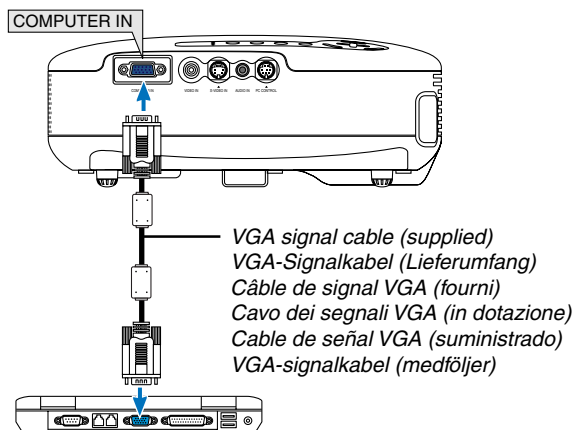
Schließen Sie ihren Computer an den Projektor an.

Connecter l'ordinateur au projecteur.

Collegate il vostro computer al proiettore.

Conectar el ordenador al proyector.

Anslut din dator till projektorn.



Step 2

Connect the supplied power cable.

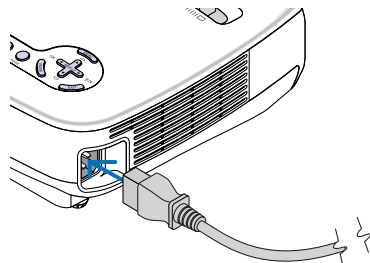
Schließen Sie das mitgelieferte Netzkabel an.

Connecter le câble d'alimentation fourni.

Collegate il cavo d'alimentazione in dotazione.

Conecte el cable de alimentación suministrado.

Anslut den medleverade nätkabeln.



Step 3

Remove the lens cap.

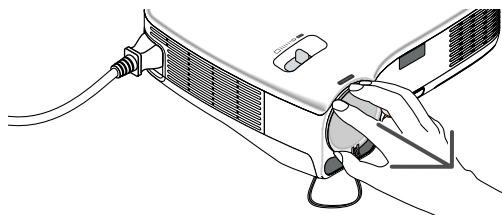
Nehmen Sie die Linsenkappe ab.

Retirer le cache-objectif.

Rimuovete il copriobiettivo.

Quite la tapa de la lente.

Ta bort linsskyddet.



Step 4

Turn on the projector.

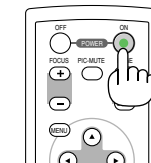
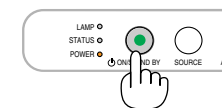
Schalten Sie den Projektor ein.

Allumer le projecteur.

Accensione del proiettore.

Encienda el proyector.

Slå på strömmen till projektorn.



Step 5

Select a source.

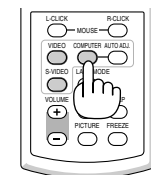
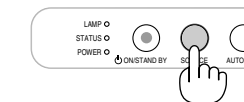
Auswählen einer Quelle.

Sélectionner une source.

Selezione di una fonte.

Selección de una fuente.

Välja en källa.



TIP: Press the AUTO ADJ. button to optimize an RGB image automatically.

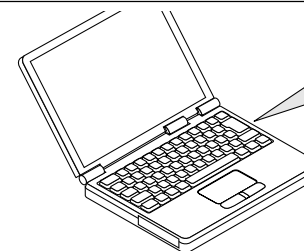
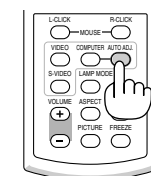
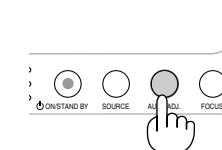
TIPP: Drücken Sie zum automatischen Optimieren des RGB-Bildes die AUTO ADJ.-Taste.

ASTUCE: Appuyer sur la touche AUTO ADJ. pour optimiser automatiquement une image RGB.

SUGGERIMENTO: Premete il tasto AUTO ADJ. per ottimizzare automaticamente l'immagine RGB.

SUGERENCIA: Pulse el botón de AUTO ADJ. para optimizar una imagen RGB automáticamente.

TIPS: Tryck på AUTO ADJ.-tangenten för att optimera en RGB-bild automatiskt.



Fn + F1 - F12

Step 6

Adjust the picture size and position.

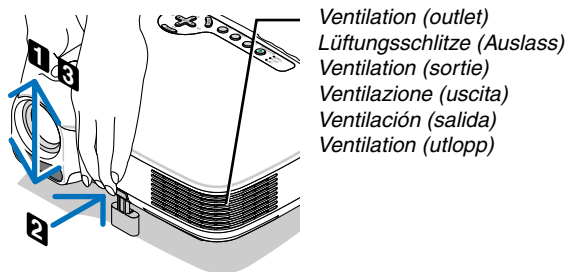
Einstellung der Bildgröße und Bildposition.

Ajuster la taille et de la position de l'image.

Regolate delle dimensioni e della posizione dell'immagine.

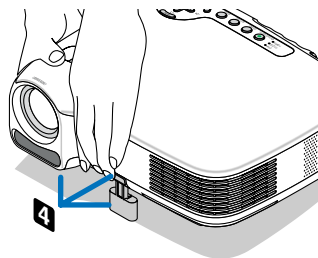
Ajuste del tamaño y la posición de la imagen.

Justera bildstorlek och position.

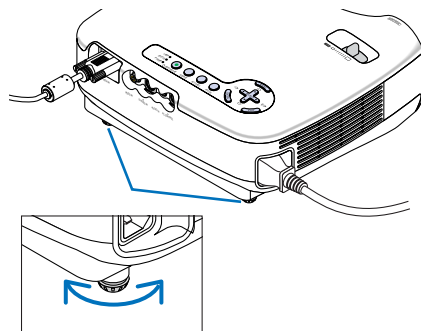
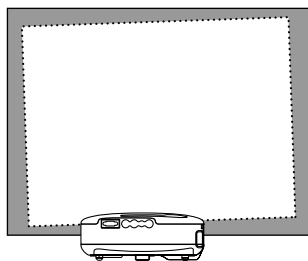


**Adjust the tilt foot/Einstellung des Kippfußes/
Régler le pied de réglage de l'inclinaison/Regolate
il piedino d'inclinazione/Ajuste de las patas de
inclinación/Justera lutningen med foten.**

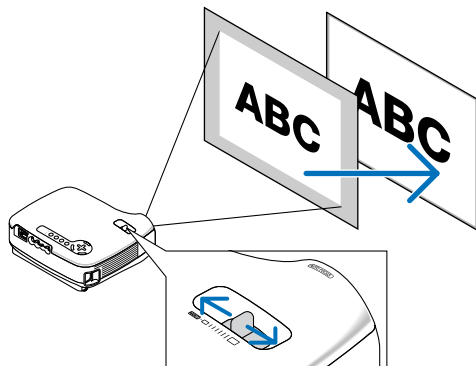
(→ Page 21 of the User's Manual)



**Rear foot/Hinterer Fuß/Pied arrière/Piedino
posteriore/Pata posterior/Bakre fot**



ZOOM



Auto Focus

Auto-Fokus

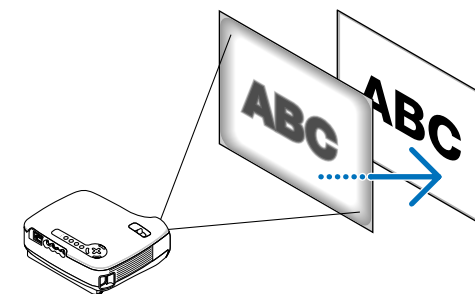
Mise au point automatique

Fuoco automatico

Enfoque automático

Autofokus

(→ page 22 of the User's Manual)



Auto Keystone Correction (Vertical)

**Automatische Trapezkorrektur
(Vertikal)**

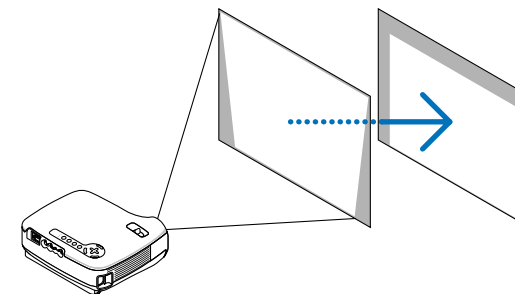
**Correction de la déformation
trapézoïdale automatique (Vertical)**

**Correzione automatica della
deformazione trapezoidale (Verticale)**

**Corrección automática de la
distorsión trapezoidal (Vertical)**

**Automatisk keystonekorrigerig
(Vertikal)**

(→ page 23 of the User's Manual)



Step 7

Turn off the projector.

Schalten Sie den Projektor aus.

Eteignez le projecteur.

Spegnete il proiettore.

Desactive el proyector.

Stäng av projektorn.

Unplug the power cable.
Trennen Sie das Netzkabel ab.
Déconnectez le câble d'alimentation.
Scollegate il cavo di alimentazione.
Desenchufe el cable de alimentación.
Dra ut nätkabeln.

(→ page 27 of the user's manual)

