

Full function remote control
(for MT series)



Card remote control
(for LT series)



Introduction

The interactive remote control demonstrates the features, functions, settings and adjustable menus of the remote controls for the LT series and MT series.

Simply click any button on the remote control on the left to display descriptions of the menus and functions.

Click the menus and submenus to display more detailed descriptions.

Your projector's display settings can be customized and fine-tuned to match your presentation needs. Normally, however, the display is optimized automatically for the input signals.

When any of the buttons on the full function remote control is pressed, the back lights of all the buttons except Mouse button turn on. If no button is pressed for 10 seconds, the back lights turn off automatically. The menus also turn off at this time.



SOURCE button

The input switches each time this button is pressed. (RGB ➡ Video ➡ S-Video ➡ PC Card Viewer)



AUTO ADJUST button

Press this to automatically adjust the vertical/horizontal position, clock frequency/phase and resolution if the projected picture is not centered, if there are vertical stripes on the picture or if the picture is flickering. (The Position and Pixel Adjust are only adjusted for RGB inputs.)



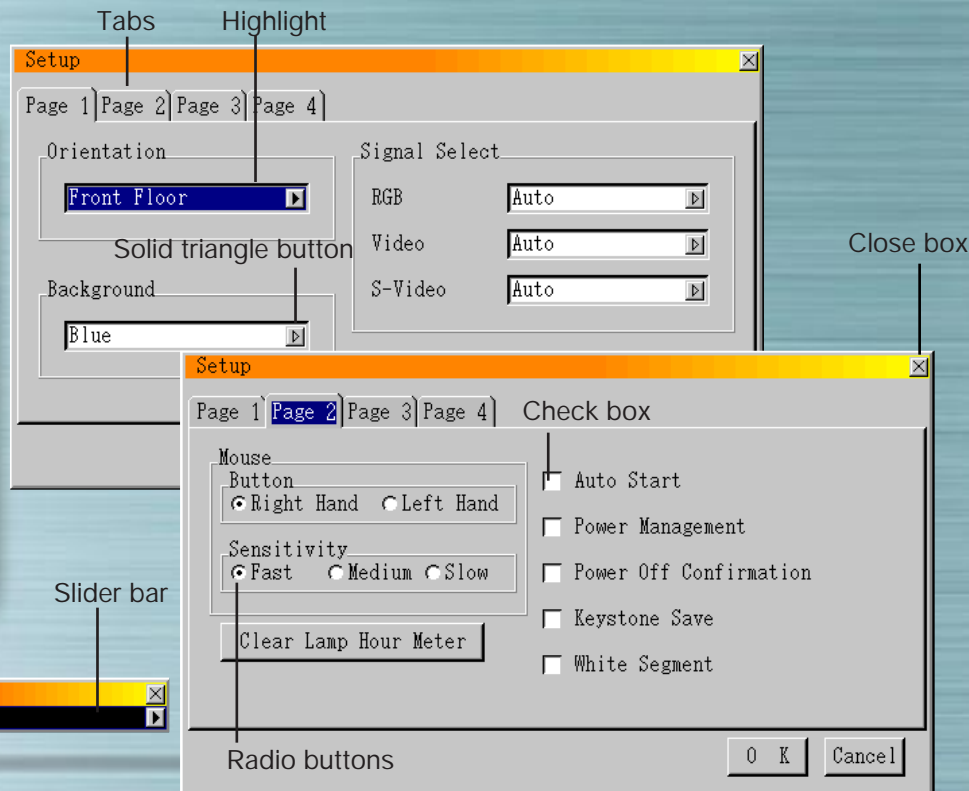
Main Menu	
Source Select	▶
Adjustments	▶
Image Options	▶
Projector Options	▶
Tools	▶
Help	▶

Menu buttons/On-screen menu

When pressed, the main menu appears. Use the ▲▼ buttons to select the submenus or adjustment or setting items.

See below for a list of the remote control unit buttons that can be used while the menu is displayed and the functions of the menus and dialog box elements.

- ▲▼ buttons : Used to select items on menus or elements in dialog boxes.
- ▶ button : Activates submenus or executes the selected item.
- ◀ button : Returns to the previous menu.



- Close box (x) : Closes the window without saving the setting or adjustment values.
- Highlight : Indicates that the menu or item is selected.
- Solid triangle button : Indicates that there are selection items on the pull-down menu.
- Tabs : Indicate the number of pages when the item in the dialog box is divided on more than one page.
- Radio buttons : Select the dialog box items.
- Check box : Check the box to activate the dialog box item.
- Slider bar : When the adjustment menu is displayed, increases or decreases the adjustment value of the selected item.

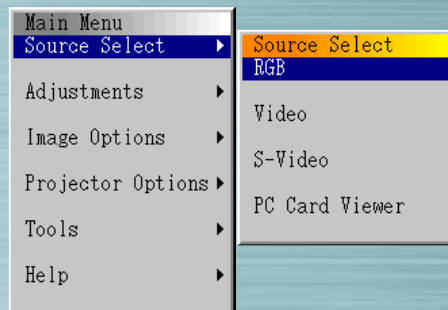


Main Menu	
Source Select	▶ Source Select
	RGB
Adjustments	▶ Video
Image Options	▶ S-Video
Projector Options	▶ PC Card Viewer
Tools	▶
Help	▶

Signal Selection Menu

Use this menu to select the input (RGB/Component, Video, S-Video or PC Card Viewer).

Use the ▲▼ buttons to select the desired input, then press the ENTER button.



(When RGB is selected)

RGB input

The signals from the computer or DVD player connected to the RGB input jacks are selected. Normally component signals are identified automatically. If not, set the component under Projector Options ➔ Setup ➔ Page 1 ➔ Signal Select ➔ RGB.



Main Menu	
Source Select	▶ Source Select
	RGB
Adjustments	▶
Image Options	▶
Projector Options	▶
Tools	▶
Help	▶
	Video
	S-Video
	PC Card Viewer

(When Video is selected)

Video input

The signal from a VCR or laser disc player connected to the VIDEO input jack is selected.

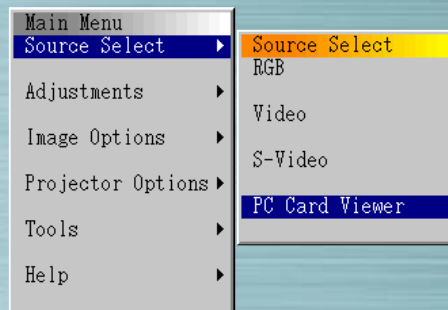


Main Menu	
Source Select	Source Select
	RGB
	Video
	S-Video
	PC Card Viewer
Adjustments	
Image Options	
Projector Options	
Tools	
Help	

(When S-Video is selected)

S-Video input

The signal from a VCR or laser disc player connected to the S-VIDEO input jack is selected.

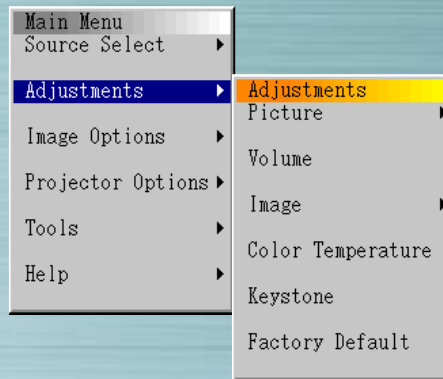


(When PC Card Viewer is selected)

PC Card Viewer

The picture data of a PC card inserted in the PC card access slot is displayed.

Settings such as whether to display a list of folders or start displaying slides immediately after the PC Card Viewer input is selected can be made under "Projector Options" ➔ "Setup" ➔ "PC Card Viewer Options".



Adjustments Menu

Use this menu to adjust the image, volume, picture, color temperature and keystone. Use the ▲▼ buttons to select the items to be adjusted, then press ► or the ENTER button.

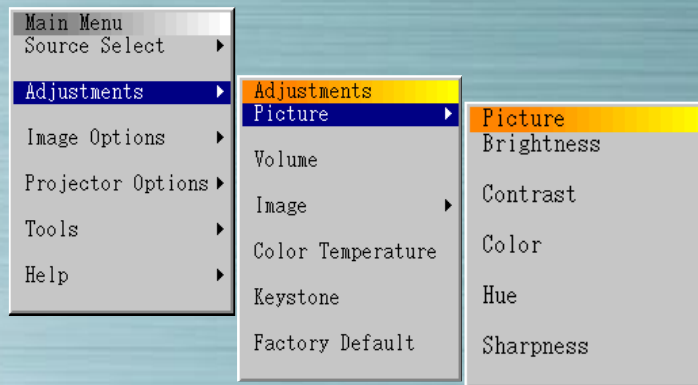


Image adjustments

Use the ◀▶ buttons to adjust the brightness, contrast, color, hue and sharpness.

The usable items on the "Adjustment Menu" depend on the selected input. Items displayed in white cannot be selected.

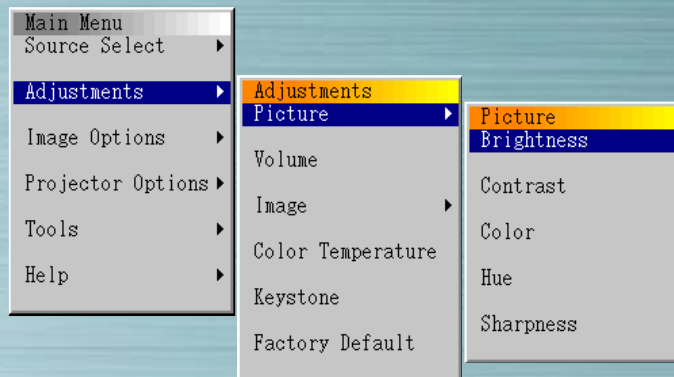


Image adjustments

Use the ◀▶ buttons to adjust the brightness, contrast, color, hue and sharpness.

The usable items on the "Adjustment Menu" depend on the selected input. Items displayed in white cannot be selected.

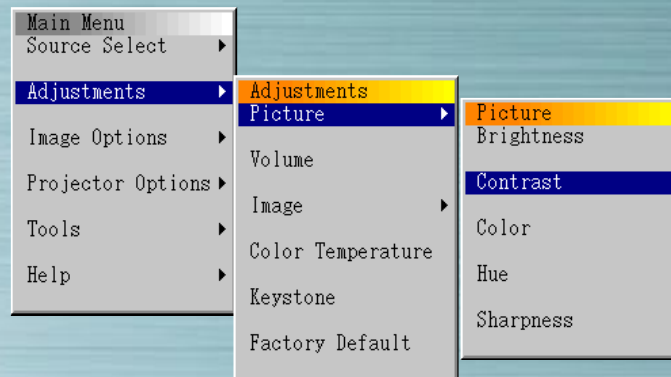


Image adjustments

Use the ◀▶ buttons to adjust the brightness, contrast, color, hue and sharpness.

The usable items on the "Adjustment Menu" depend on the selected input. Items displayed in white cannot be selected.

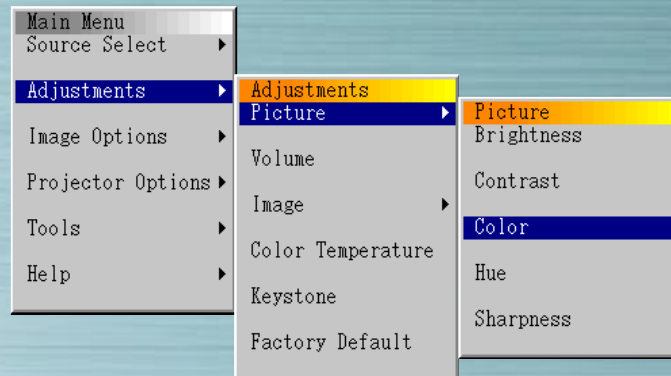


Image adjustments

Use the ◀ ▶ buttons to adjust the brightness, contrast, color, hue and sharpness.

The usable items on the "Adjustment Menu" depend on the selected input. Items displayed in white cannot be selected.

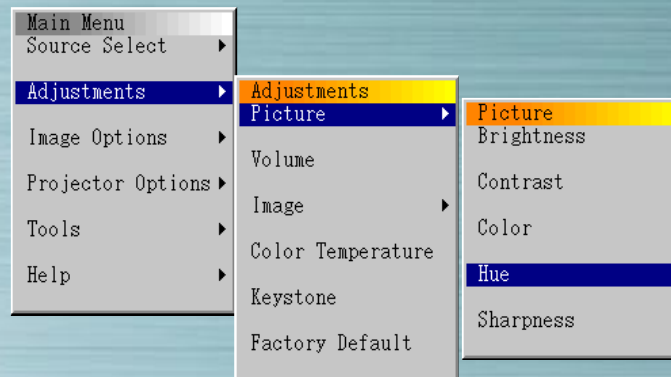


Image adjustments

Use the ◀▶ buttons to adjust the brightness, contrast, color, hue and sharpness.

The usable items on the "Adjustment Menu" depend on the selected input. Items displayed in white cannot be selected.

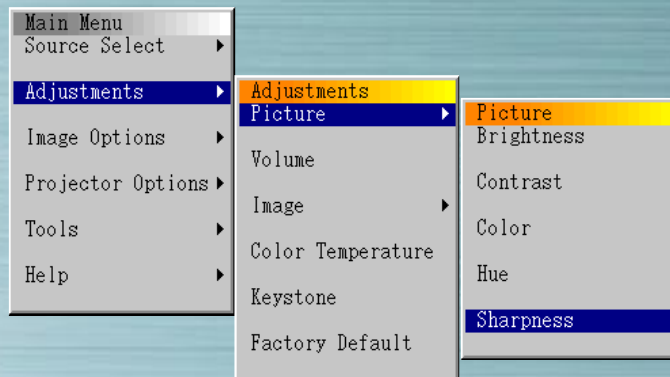
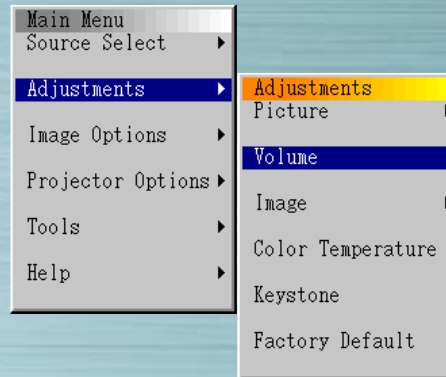


Image adjustments

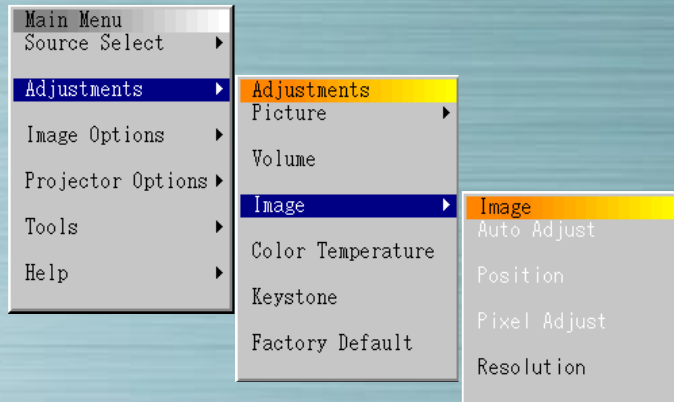
Use the ◀ ▶ buttons to adjust the brightness, contrast, color, hue and sharpness.

The usable items on the "Adjustment Menu" depend on the selected input. Items displayed in white cannot be selected.



Volume adjustments

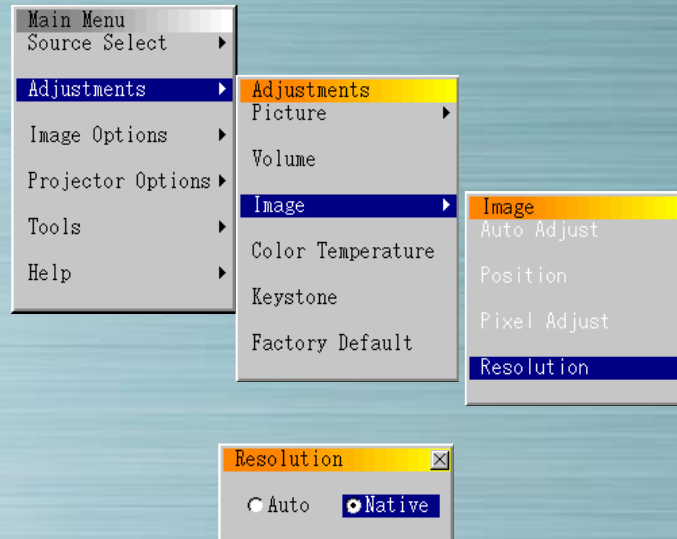
Use the ◀▶ buttons to adjust the volume.
You can adjust the volume using ▲▼ when no menus are displayed.



Picture menu

Use this menu to adjust the image automatically, to adjust vertical/horizontal position, to adjust the clock frequency/phase, and to set the resolution ("Auto" or "Native"). Use this function to move the position of the display up, down, left or right (Position), to adjust the width of the image with respect to the screen (Clock Frequency), to minimize noise, flickering or color deviation (Phase), or to display the picture over the entire screen according to the resolution (Resolution). Perform these adjustments when you want to improve the projected picture. When "Auto Adjust" is set, the picture is automatically adjusted to the optimum conditions.

Use the ▲▼ buttons to select the items.

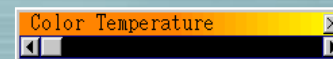
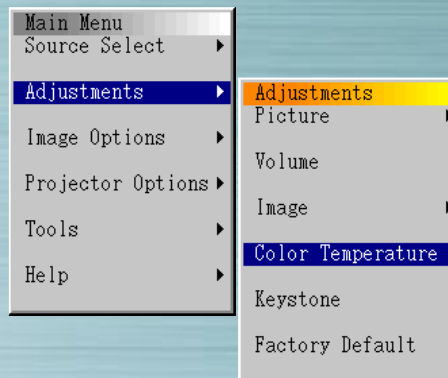


Resolution (Only when Auto Adjust is Off)

When the "Auto" radio button is selected, the optimum resolution (VGA, SVGA, XGA or SXGA) for the signal being projected is automatically identified and the picture is displayed over the entire screen.

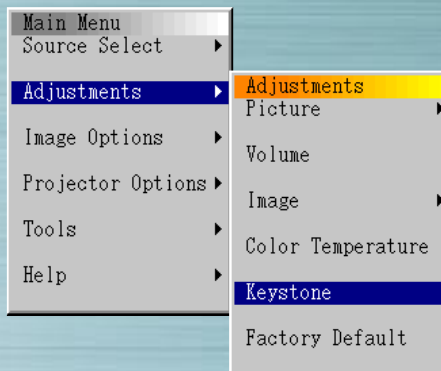
When "Native" is selected, the current signal is projected with the original size resolution (VGA, SVGA or XGA).

This option is available for RGB input only.



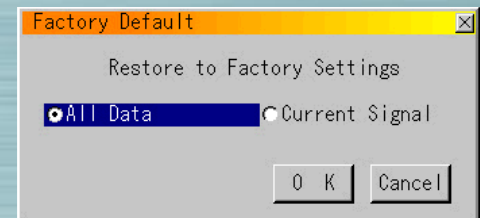
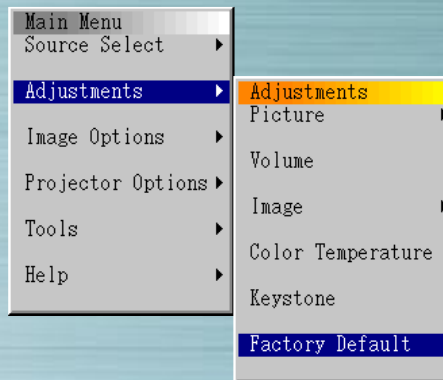
Color Temperature

Use the ◀▶ buttons to adjust the color temperature. The blue is stronger when the bar is set to the right; the red is stronger when the bar is set to the left.



Keystone Correction

Use the ◀ ▶ buttons to make the adjustment. The adjustment range is +/- 15° in the vertical direction with the set placed on the level. If you wish to store the correction setting so that it is still set when the power is turned back on next time, do so under "Projector Options" ➔ "Setup" ➔ "Page 2" ➔ "Keystone Save".



Factory Default

Use the ◀▶ buttons to select "All Data" or "Current Signal", press the Down button, highlight the "OK" button, then press the ENTER button. The settings and adjustments are restored to the factory settings.

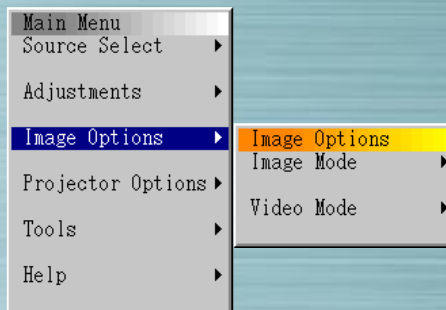


Image Options Menu

Use ▲▼ to select "Image Mode" or "Video Mode", then press the ► or ENTER button.

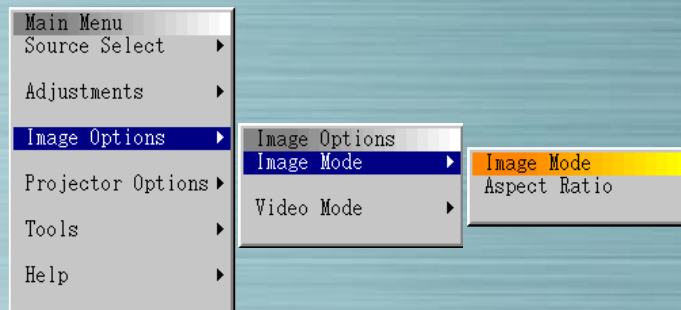
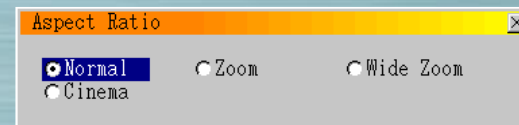
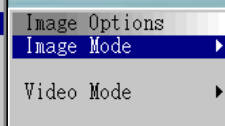
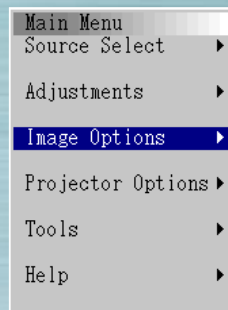


Image Mode

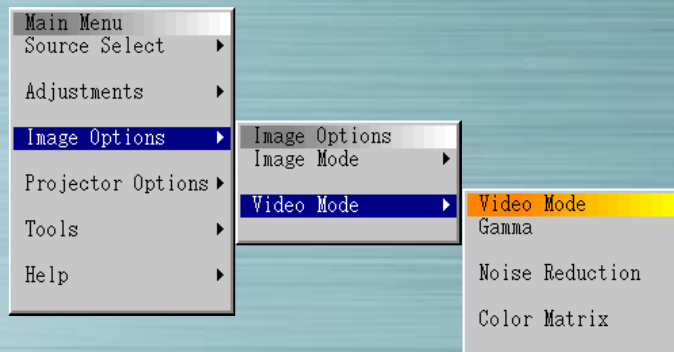
Adjust the aspect ratio according to the signal to be projected.

Use the ▲▼ buttons to select "Aspect", then use the ◀▶ buttons to select the corresponding radio button.



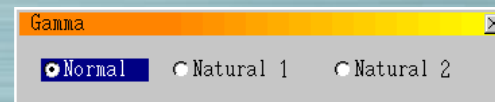
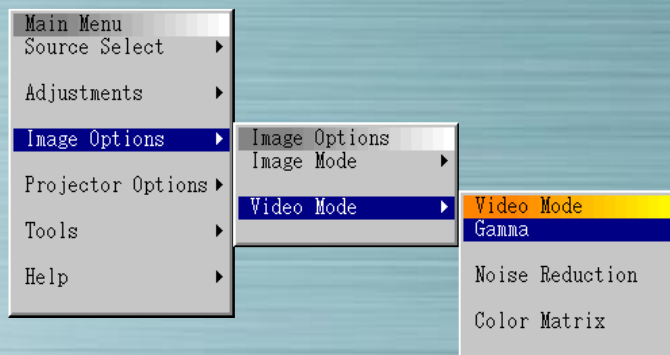
Aspect

- Normal : 4:3 images are displayed with a 4:3 ratio.
- Zoom : 16:9 images are expanded in the vertical and horizontal directions and displayed with a 4:3 ratio.
- Wide Zoom : 16:9 squeeze images are displayed with a 4:3 ratio in the horizontal direction.
- Cinema : The vertical amplitude of 16:9 squeeze images is reduced and the images are displayed with a 16:9 ratio.



Video Mode

Select Gamma, Noise Reduction and Color Matrix according to the signal to be projected. For Gamma and Color Matrix, use the ◀▶ buttons to select the desired radio button. For Noise Reduction press the ▶ button to display the pull-down menu, then use the ▲▼ button to select the level.

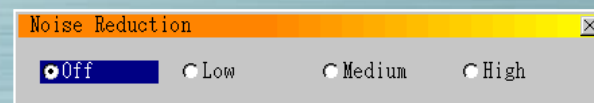
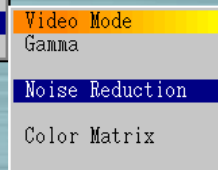
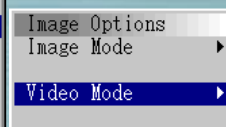
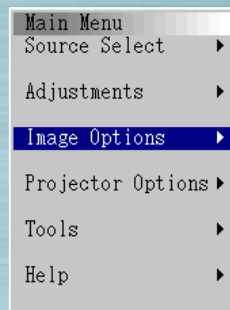


Gamma Correction

Normal : Default for RGB signal

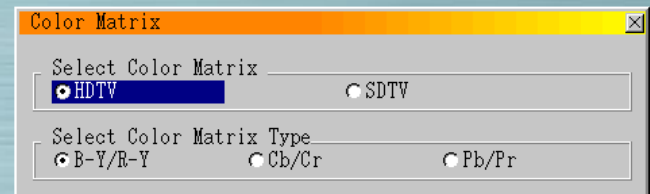
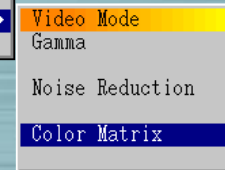
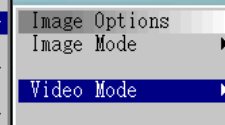
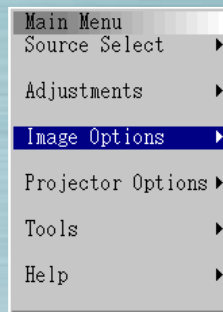
Natural 1 : Default for Video and S-Video signal

Natural 2 : Default for component signal



Noise Reduction

Select the level (Off, Low, Medium or High).



Color Matrix

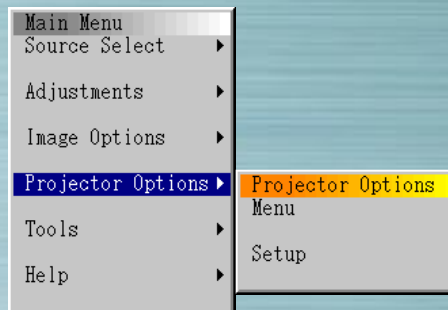
Select Color Matrix

HDTV : High Definition TV signals

SDTV : Standard Digital TV signals

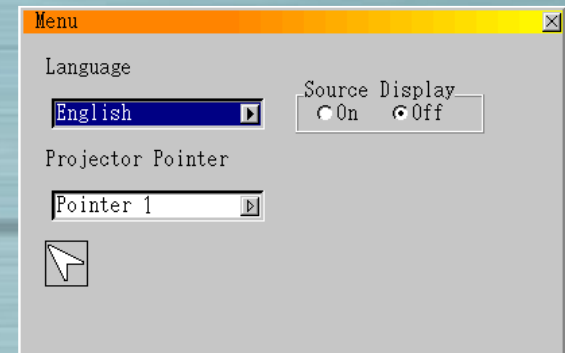
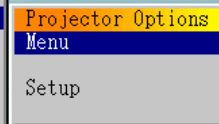
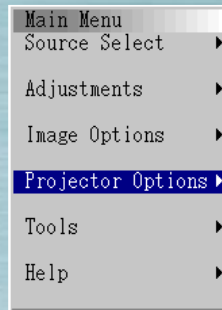
Select Color Matrix Type

Select the appropriate type (B-Y/R-Y, Cb/Cr or Pb/Pr).



Projector Options Menu

Set the menus and various items. Set the menu language, pointer shape, whether or not to display items, the type of projector, etc. Use ▲▼ to select the item then press ► or the ENTER button.



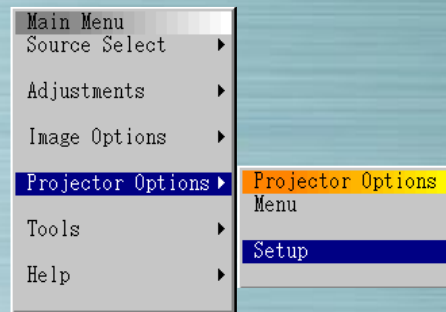
Menu

Use the ▲, ▼, ◀, ▶ buttons to select the item (Language, Projector Pointer, or Source Display).

When Source Display is set to "Off", the selected items are displayed on the screen only when the power is turned on and when the input is switched.

Use the ▲▼ buttons to select the menu language.

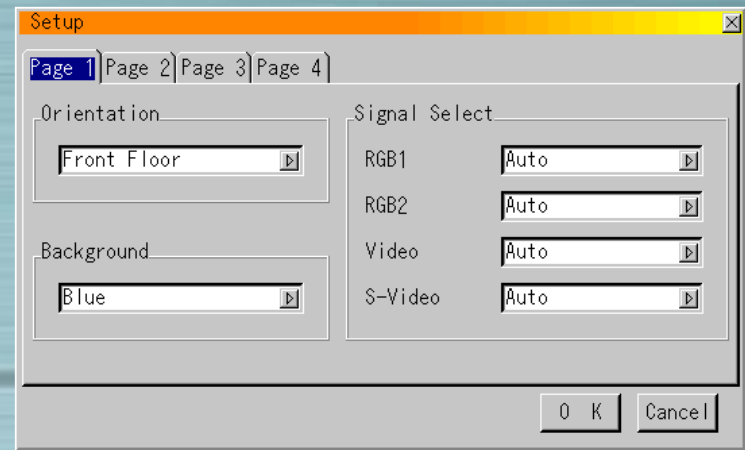
Use the ▲▼ buttons to select one of the 8 types of pointer icons.



Setup

Make the various settings according to how the projector is to be used. There are four pages of settings. The OK and Cancel buttons affects all four pages. Note that the LT series projectors have three pages.

next page



Page 1

Orientation

Set the projection method. Use the ▲▼ buttons to select Front Floor, Rear Ceiling, Rear Floor or Front Ceiling.

Background

Select the background when there is no signal. Use the ▲▼ buttons to select Blue, Black, or Logo.

Signal Select

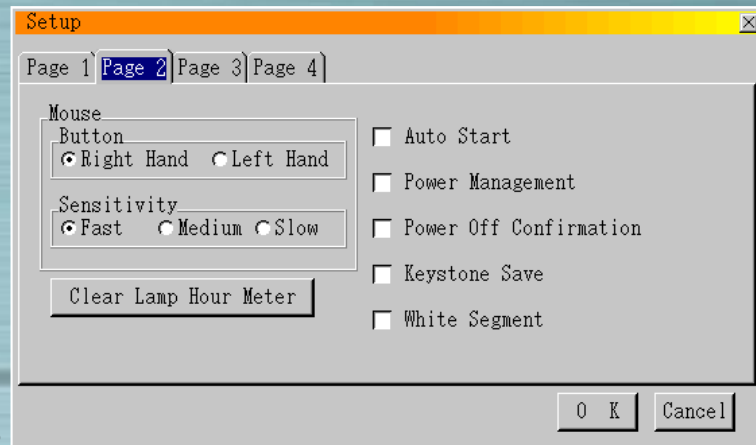
RGB: Normally select "Auto". RGB and component signals are switched automatically. If the signal does not switch when component signals are input, select the "Component".

Video & S-Video: Set the video mode. When "Auto" is selected, NTSC 3.58, NTSC 4.43, PAL, PAL 60 or SECAM is selected automatically.

(NTSC 4.43 and PAL 60 are not identified automatically when the LT series projector is used. To view in one of these modes, select the mode from the pull-down menu.)

[previous page](#)

[next page](#)



Page 2

Mouse Buttons

Use the Left and Right buttons to set the mouse button mode to "Right-handed" or "Left-handed".

Speed

Set the mouse speed to High, Medium or Low.

Auto Start

When this is selected, the projector turns on automatically when the power cord is plugged into an outlet.

Power Management

When this is selected, the standby mode is set automatically if no signal is input for 5 minutes.

Power Off Confirmation

When this is selected, a verification message is displayed when turning the power off.

Keystone Save

When this is selected, the setting for compensating for trapezoidal distortion is stored and remains in the memory even when the power is turned off.

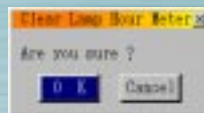
White Segment (LT series only)

If you prefer putting emphasis on brightness, place a checkmark in the box to turn the option. If you prefer an image in truer color, turn off this option.

Highlight "OK". Press the ENTER button to validate the above settings.

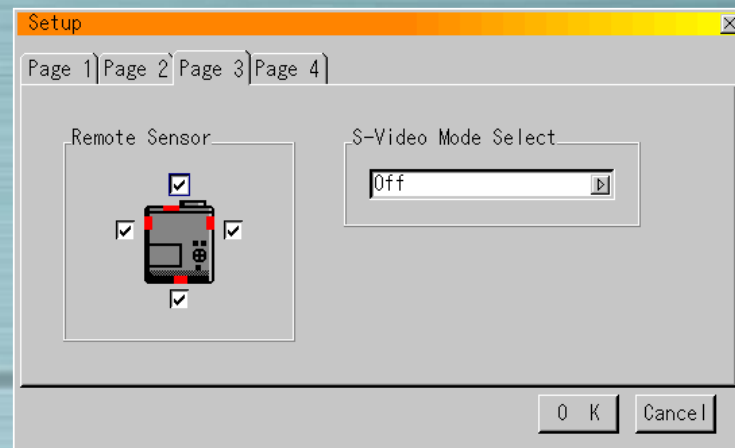
[previous page](#)

[next page](#)



Clear Lamp Hour Meter

Use this to reset the total lamp usage time after replacing the lamp. Use the ▲ or ▼ button to highlight the Clear Lamp Hour Meter button, press the ENTER button, use the ◀▶ buttons to highlight "OK", then press the ENTER button to clear the lamp usage time. To cancel the operation, use the ▶ button to highlight Cancel, then press the ENTER button.



Page 2

Fan High Speed Mode (MT series only)

This option allows you to select two modes for fan speed : high-speed mode and normal speed mode.

When you wish to cool down the temperature inside the projector quickly, check this box. This is convenient especially when the projector is installed on the ceiling.

Page 3

Remote Sensor (MT series only)

This option determines which remote sensors on the projector are effective in wireless mode.

The options are : front, rear, right, or left. Checked sides show that they can accept the infrared signal from the supplied remote control.

S-Video Mode Select (MT series only)

This feature is used to select the S-Video signal detection mode. This allows identifying of the S-Video signals with different aspect ratio (Zoom 16 : 9, Wide Zoom 4 : 3).

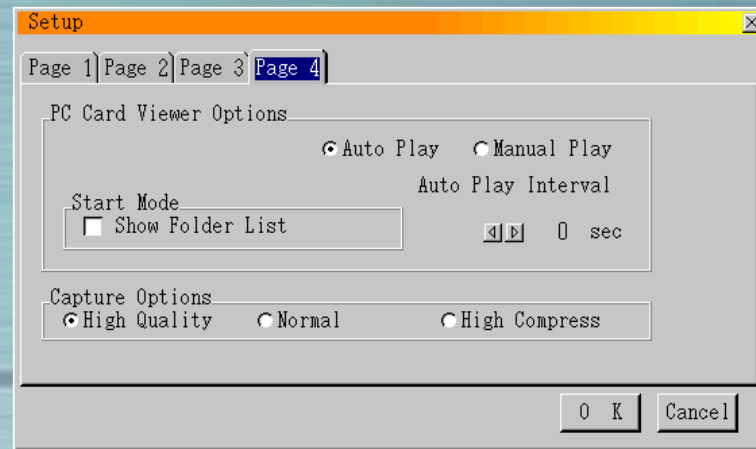
S1 Identifies a Zoom signal only.

S2 Identifies a Zoom or Wide Zoom signal.

Off Does not identify any S-Video signal.

[previous page](#)

[next page](#)



Page 4 (Page 3 on LT series)

PC Card Viewer Options

Start Mode

Set the start mode when the PC Card Viewer input is selected from the projector.

Show Folder List

When the PC Card Viewer input is selected from the projector, a list of folders is displayed and the presentation documents can be selected from the PC card.

Auto Play

If this option is checked, any given slide will start to play automatically. You can also specify interval between 5 and 300 seconds using Auto Play Interval.

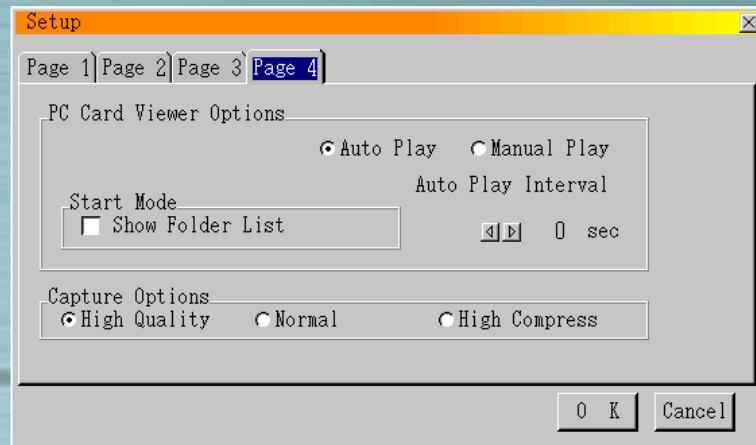
Manual Play

Views a slide manually when PC Card Viewer input is selected.

Note: The Auto Play and Manual Play options determine the behavior of the Play/Stop [▶/■] icon on the Viewer tool bar.

[previous page](#)

[next page](#)



When selecting "Show Folder List" or "Manual Play" while the "Auto Play" feature is not checked, and you select PC Card Viewer for the input source, you can manually advance to the next slide or the previous slide.

Note: If you check "Auto Play" and "PC Card Viewer" on the projector, the slides will automatically start to play back from any given slide.

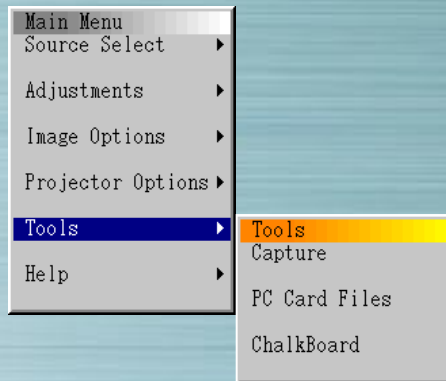
Capture Options (for JPEG files only)

Use the radio buttons to select the jpeg image compression.

- High Quality
Picture quality is prioritized.
- Normal
Standard image compression.
- High Compression
Compression is prioritized.

Highlight "OK". Press the ENTER button to validate the above settings.

[previous page](#)

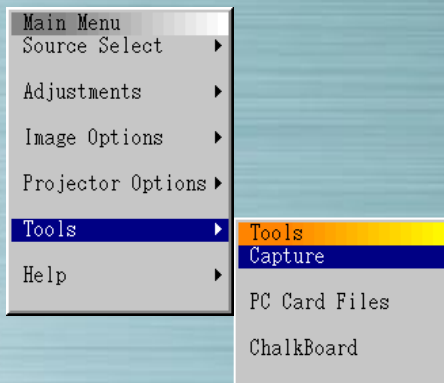


Tools menu

Use this to save captured picture data when a PC card is loaded, to display lists of the picture data on the PC card, to sort the files and to display the selected file.

Under "ChalkBoard", lines and circles can be drawn in free hand on the screen.

(The chalkboard function can only be used when a USB mouse is connected.)



Capture

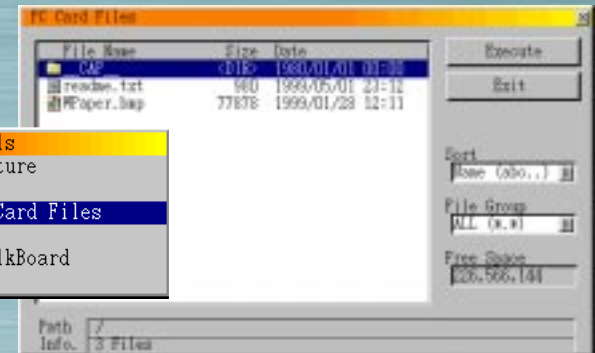
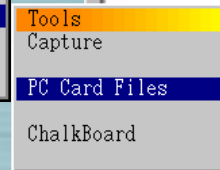
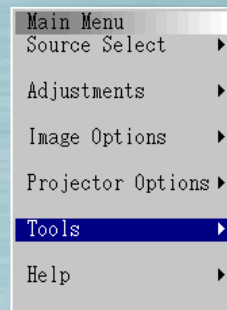
Use this to capture the displayed image. The captured picture file is stored on the PC card.
(This function cannot be used when no PC card is loaded.)

When Capture is selected, the tool bar appears.

Camera button: Press this to capture the image.

Freeze button : Press this to freeze the displayed picture.

Exit button : Press this to exit the capture. When pressed, the tool bar turns off.



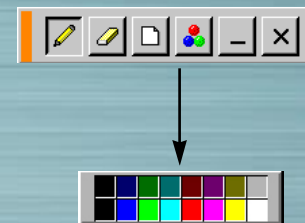
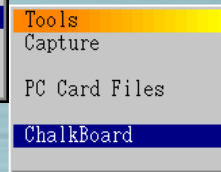
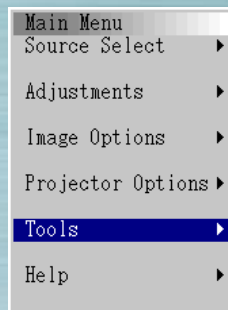
PC Card Files

Use this to display a list of the picture files on the PC card, to check the files, to sort them, and to display them. Press the Execute button to perform the selected operation. (It is not possible to delete files or change file names from this menu.)

Select ► to display the pull-down menu. Select Name, Ext., Date or Size to sort the files in that order.

File types

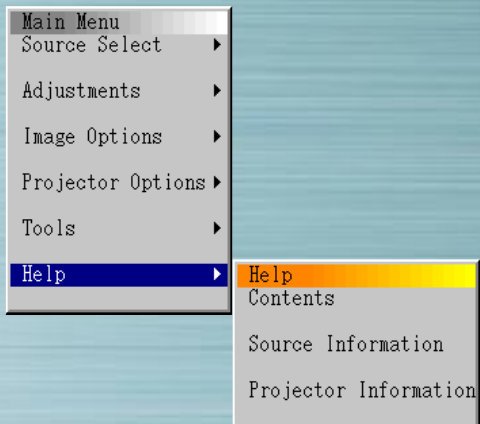
Select ALL, Text, Index, HTML, JPEG or BMP.



ChalkBoard

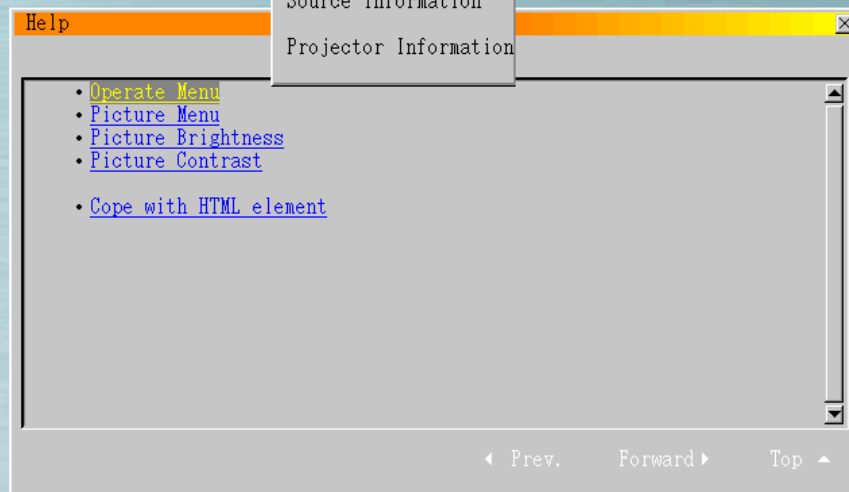
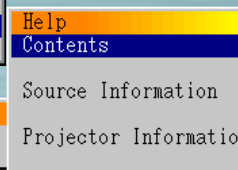
When ChalkBoard is selected, the tool bar appears. There are 6 buttons on the tool bar: pen, eraser, clear, color, size and view/hide. When the color button is selected, a color palette appears. To move the tool bar, click on the orange bar and drag it.

The chalkBoard function can only be used with a USB mouse (commercially available). It cannot be operated from the card remote control unit or full function remote control unit.



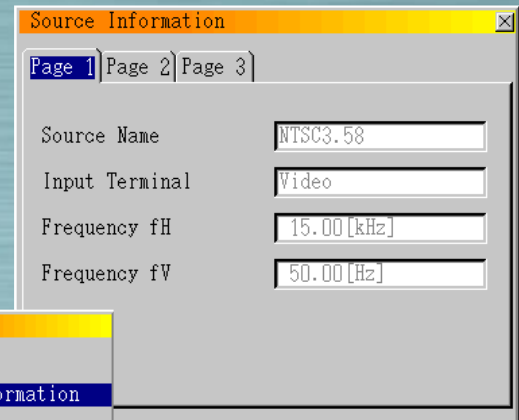
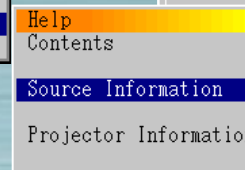
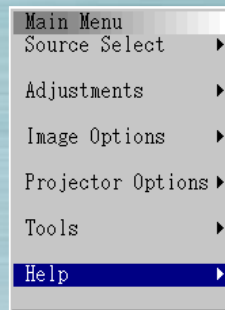
Help

Use this to display the help contents, information on the input signal and information on the projector.



Contents

Select this to display the contents. Display descriptions of operating, adjustment and setting procedures.



Source Information

Select this to display information on the signal currently being projected. There are three pages of information.

The following items can be displayed:

- Source Name
- Input Terminal
- Horizontal Frequency
- Vertical Frequency
- Sync Polarity



Source Information

Page 1 | Page 2 | Page 3

Signal Type

Video Type

Resolution

Source Information

Page 1 | Page 2 | Page 3

Gamma

Aspect Ratio

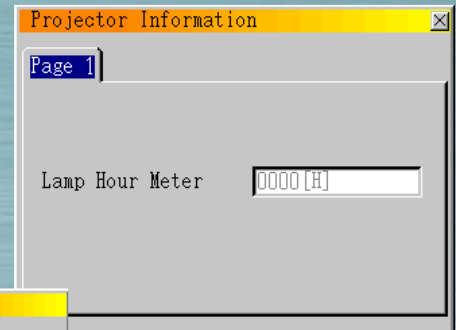
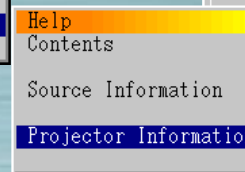
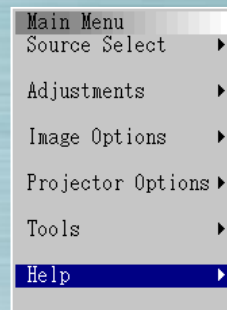
Color Matrix

Matrix Type

Interlace Mode

Signal Type
Video Type
Sync Type
Interlace
Resolution

Aspect Ratio
Gamma
Noise Reduction
Color Matrix
Matrix Type



Projector Information

Lamp Hour Meter

This displays the total amount of time the lamp has been used. The lamp should be replaced when this time reaches 1000 (LT series) / 2000 hours (MT840 / MT1040) / 1500 hours (MT1045) . Replace the lamp with the LT40LP for LT series / MT40LP for MT series Optional Lamp.

If the lamp usage time reaches 1100 hours (LT series) / 2100 hours (MT840 / MT1040) / 1600 hours (MT1045) , the power will no longer turn on.



laser beam

LASER button

When pressed, a red laser beam is emitted.
The beam reaches a distance of approximately 10 meters (33 feet).

NOTE: Do not look directly at the laser pointer's laser beam, and do not point it at people.



SELECT/Mouse buttons

Use these to select items from the displayed menu and to move the pointer.

The full function remote control unit can also be used as the computer's mouse when the computer mode is selected with the COMPUTER/PJ SELECT button.



CANCEL/R-CLICK button

Press this button to turn off menus or tool bars. When this is pressed, the adjustments and settings are not saved.



ENTER/L-CRUISE button

ENTER/L-CRUISE button

Press this to execute the selected item. When this is pressed, the adjustments and settings are saved.



MAGNIFY button

Press this to adjust the picture up to 400%.



POINTER button

Press this to display the pointer. Press again to turn the pointer off.

With the full function remote control unit, when this button is pressed the COMPUTER/PJ SELECT button automatically lights red and the mouse buttons are set to the projector mode.



PICTURE MUTE button

Press this to mute the image and sound. Press again to cancel the mute mode.



HELP button

Press this when nothing is selected to display the help menu. When pressed while the help menu is displayed, the description of the help function is displayed. When pressed while menus or adjustment/setting screens are displayed, help on that subject is displayed.

When this button is pressed, the COMPUTER/PJ SELECT button automatically lights red and the mouse buttons are set to the projector mode.



POWER ON/OFF buttons

Use these to turn the projector's power on and off.

NOTE: To turn off the projector using the full function remote control, press and hold the POWER OFF button for a minimum of two seconds.



LED

This flashes when any one of the remote buttons is pressed.



COMPUTER/PJ SELECT button

Press this to switch the mouse buttons between the projector mode (lit red) and the computer mode.

The default is the computer mode. When the MENU, HELP or POINTER button is pressed, this button lights red and the mouse buttons are set to the projector mode. To switch them back to the computer mode, press the COMPUTER/PJ SELECT button. If no buttons are pressed within 10 seconds, the light goes out and the Projector mode is canceled.