

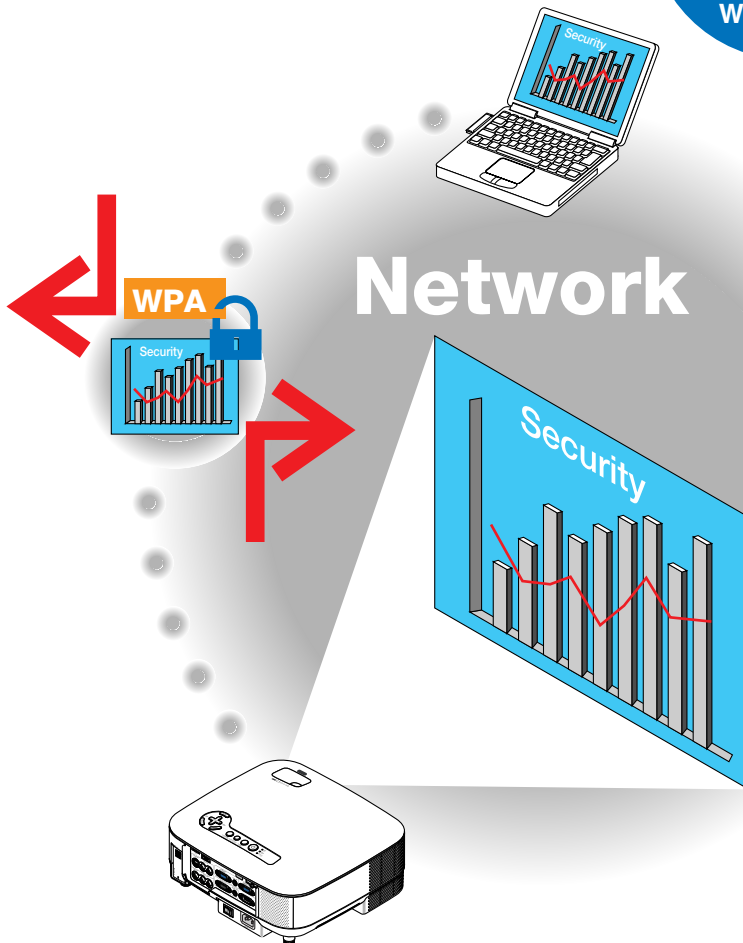
NEC Portable Projector

NP905/NP901W

WPA Setting Guide

Supported
Authentication
Method

WPA-PSK
WPA-EAP
WPA2-PSK
WPA2-EAP



Contents

Introduction	3
1. Setting WPA-PSK or WPA2-PSK.....	5
2. Setting DATE, TIME PRESET	8
3. Setting WPA-EAP or WPA2-EAP	9
4. Checking Authentication Status on [INFORMATION] Screen.....	16

NOTES

- (1) The contents of this guide may not be reprinted in part or whole without permission.
- (2) The contents of this guide are subject to change without notice.
- (3) Great care has been taken in the preparation of this guide; however, should you notice any questionable points, errors or omissions, please contact us.
- (4) Notwithstanding article (3), NEC will not be responsible for any claims on loss of profit or other matters deemed to result from using the Projector.

Introduction

Thank you for purchasing the NEC projector NP905/NP901W.

This guide explains how to set the enhanced wireless LAN security (authentication method) on the projector as shown on the table below.

Set the projector according to the security environment of your network.

	Authentication method	Encryption type	EAP type	Digital certificate	Format of certificate
Wireless LAN	WPA-PSK, WPA2-PSK (→ Page 5)	TKIP AES	–	Not used	–
	WPA-EAP, WPA2-EAP (→ Page 9)	TKIP AES	EAP-TLS	Client certificate	PKCS#12
				CA Certificate	DER
			PEAP- MSCHAPv2	CA Certificate	DER

Important:

- Please note that instructions and explanation on security functions on the above table is not included in the supplied “User’s Manual” or within the “Wired and Wireless Network Setup Guide”.
 - When you set WPA-EAP or WPA2-EAP, be sure to set [DATE, TIME PRESET] before installing digital certificates. (→ [page 8](#))
If setting of [DATE, TIME PRESET] is not correct, a message “authentication error” will be displayed.
 - To install digital certificates on the projector, use a USB memory device in the market.
-

Continued on next page

Other Notes

- Contact your network administrator for information about access point and settings for authentication server (authentication method, encryption type, EAP type, and digital certificates).
- For using the on-screen menu on the projector, see the “User’s Manual” (PDF) on the supplied CD-ROM.
- See the supplied “Wired and Wireless Network Setup Guide” for instructions on setting IP address, subnet mask, SSID, and WEP on the projector.
- WPA-PSK, WPA-EAP, WPA2-PSK and WPA2-EAP are available only when [INFRA-STRUCTURE] is selected in [NETWORK TYPE] of the [CONNECTION] page. They are not available when [AD HOC] is selected.
- WPA-PSK stands for “Wi-Fi Protected Access-Pre-Shared Key”, TKIP for “Temporal Key Integrity Protocol”, AES for “Advanced Encryption Standard”, EAP for “Extensible Authentication Protocol”, TLS for “Transport Layer Security”, PEAP for “Protected Extensible Authentication Protocol”, MSCHAPv2 for “Microsoft Challenge Handshake Authentication Protocol version 2”, DER for “Distinguished Encoding Rules”, PKCS for “Public-Key Cryptography Standards”.

1. Setting WPA-PSK or WPA2-PSK

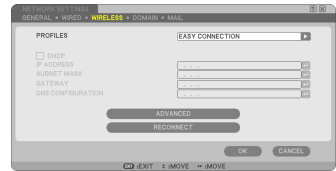
From the on-screen menu on the projector, select [SETUP] → [INSTALLATION] tab → [NETWORK SETTINGS] screen and follow the instructions below.

1 Display the [NETWORK SETTINGS] screen.

- See page 17 of “Wired and Wireless Network Setup Guide” for setting wireless LAN.

2 Use the SELECT ► button to select the [WIRELESS] tab.

The [WIRELESS] page will be displayed.



3 Set items such as PROFILE, DHCP, IP ADDRESS, SUBNET MASK and others as required.

- Select [PROFILE 1] or [PROFILE 2] for [PROFILES]. If [EASY CONNECTION] is selected, WPA-PSK, WPA2-PSK, WPA-EAP, or WPA2-EAP is not available.

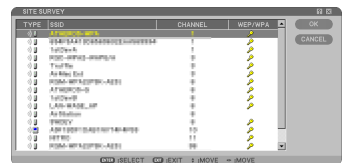
4 Use the SELECT ▼ button to select [ADVANCED SETTINGS] and press the ENTER button.

The [ADVANCED SETTINGS] screen will be displayed.



5 Select [SITE SURVEY] and press the ENTER button.

The “SSID” list will be displayed.



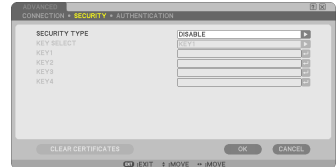
- 6 Use the SELECT ▼▲ button to select a connecting SSID, and then press the SELECT ► button to select [OK].

Finally press the ENTER button.

- Select the SSID for which WPA-PSK or WPA2-PSK is set.
- Select [INFRASTRUCTURE (📶)] for [NETWORK TYPE]. WPA-PSK, WPA2-PSK, WPA-EAP, or WPA2-EAP is not available when [AD HOC (📶)] is selected.

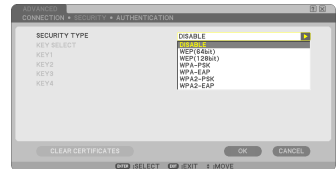
- 7 Use the SELECT ▲ button to select the [CONNECTION] tab and then SELECT ► button to select the [SECURITY] tab.

The [SECURITY] page will be displayed.



- 8 Use the SELECT ▼ button to select the [SECURITY TYPE] field and press the ENTER button.

The pull-down list will be displayed.



- 9 Use the SELECT ▼▲ button to select [WPA-PSK] or [WPA2-PSK] and press the ENTER button.

- 10 Use the SELECT ▼ button to select the [TKIP/AES] field and press the ENTER button.

The pull-down list will be displayed.

- 11 Use the SELECT ▼▲ button to select [TKIP] or [AES] and press the ENTER button.

Select [TKIP] or [AES] according to the setting for your access point.

12 Use the SELECT ▼ button to select the [KEY] field and press the ENTER button.

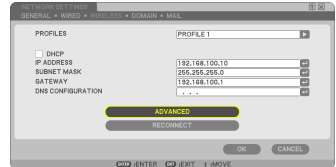
The character entry screen (software keyboard) will be displayed. Set a key.

- A key must be between 8 and 63 characters in length.
- See page 26 of “Wired and Wireless Network Setup Guide” for using the software keyboard to enter a key.



13 Use the SELECT ▼ button to select [OK] and press the ENTER button.

The [WIRELESS] page will be returned.



14 Use the SELECT ▼ button to select [RECONNECT] and press the ENTER button.

15 Use the SELECT ▼ button to select [OK] and press the ENTER button.

This completes the WPA-PSK or WPA2-PSK settings.

2. Setting DATE, TIME PRESET

Before installing a digital certificate on the projector, you are required to set [DATE, TIME PRESET] for checking the expiration date of the digital certificate.

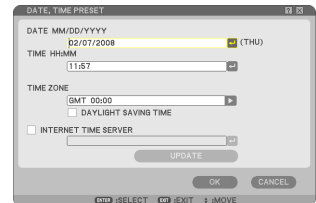
Set the current date and time (i.e., local time), and the time zone.

Important:

- If setting of [DATE, TIME PRESET] is not correct, a message “authentication error” will be displayed because of failure of checking the expiration date of the digital certificate when you install a digital certificate. (→ [page 16](#))
- The projector has a built-in clock. The clock will keep working for about 2 weeks after the main power is turned off. If the main power is off for 2 weeks or more, the built-in clock will cease. If the built-in clock ceases, set the date and time, and the time zone again. The built-in clock will not cease while in the standby mode.

① Display the [DATE, TIME PRESET] setting screen.

- From the on-screen menu, select [SETUP] → [BASIC] tab → [TOOLS] → [DATE, TIME PRESET].



② Set the DATE, TIME and TIME ZONE.

③ After setting, select [OK] and press the ENTER button.

The DATE, TIME PRESET time has been set.

3. Setting WPA-EAP or WPA2-EAP

Select a wireless LAN compliant WPA-EAP or WPA2-EAP authentication and install a digital certificate on the projector.

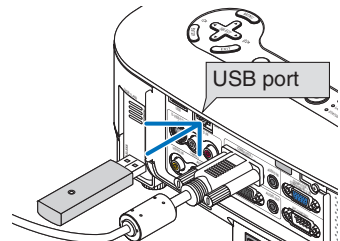
- 1 Set [DATE, TIME PRESET] on the projector. (See previous page)
- 2 Use a computer to save digital certificates (files) for WPA-EAP or WPA2-EAP setting to your USB memory device.

After completing saving the file, remove the USB memory device from the computer.

Important:

- The file formats of digital certificate that are supported by the projector are DER and PKCS#12 only.
- The projector cannot handle any digital certificate whose file size exceeds 8 KB.
- CRL (Certificate Relocation List) is not supported.
- Client certificate chain is not supported.

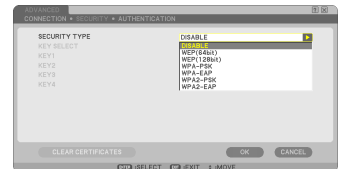
- 3 Plug the USB memory device into the USB port of the projector.



- 4 Repeat steps 1 on page 5 to 3 on page 6.

The pull-down list will be displayed.

- 5 Use the SELECT ▼▲ button to select [WPA-EAP] or [WPA2-EAP] and press the ENTER button.



- 6 Use the SELECT ▼ button to select the [TKIP/AES] field and press the ENTER button.

The pull-down list will be displayed.

7 Use the SELECT ▼▲ button to select [TKIP] or [AES] and press the ENTER button.

Select [TKIP] or [AES] according to the setting for your access point.

8 Use the SELECT ▲ button to select the [SECURITY] tab and press the SELECT ► button.

The [AUTHENTICATION] page will be displayed.



Select either [EAP-TLS] or [PEAP-MSCHAPv2] for [EAP TYPE]. The setting items vary depending on the EAP type.

See the table below.

EAP Type	Setting Item	Note
EAP-TLS	User Name	1 character or more and 32 characters or less
	Client Certificate	PKCS#12 format file
	CA Certificate (Certificate authority's certificate)	DER format file
PEAP-MSCHAPv2	User Name	1 character or more and 32 characters or less
	Password	1 character or more and 32 characters or less
	CA Certificate (Certificate authority's certificate)	DER format file

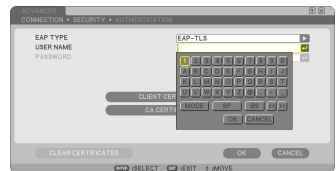
① Selecting [EAP-TLS] for [EAP TYPE]:

The following section explains the operation for selecting [EAP-TLS]. For selecting [PEAP-MSCHAPv2], go on to Step 9 on page 13.

9 Use the SELECT ▼ button to select [USER NAME] field and press the ENTER button.

The character entry screen (software keyboard) will be displayed. Set a user name.

- A user name must be 1 character or more and 32 characters or less.
- See page 26 of “Wired and Wireless Network Setup Guide” for using the software keyboard to enter characters.



10 Use the SELECT ▼ button to select [CLIENT CERTIFICATE] and press the ENTER button.

A list of files (thumbnail screen) will be displayed.

- For operating the thumbnail screen, see “5. Using the Viewer” in the “User’s Manual” (PDF).
- To return to the [AUTHENTICATION] page, press the EXIT button.



NOTE:

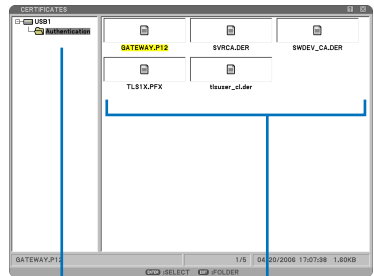
Installing a digital certificate

You can install each digital certificate (client certificate and CA certificate) for [PROFILE 1 (or 2)] on a file-by-file basis.

- Install a root CA certificate for a CA certificate.
- If you install a digital certificate over your existing digital certificate, the existing digital certificate will be overwritten with the new digital certificate.
- Once a digital certificate has been installed, its information cannot be deleted even if you stop setting WPA-EAP or WPA2-EAP.

11 On the thumbnail screen, select a digital certificate (PKCS#12 format file) saved in your USB memory device and press the ENTER button.

The password screen will be displayed.



① Select a USB memory and press the ENTER button.

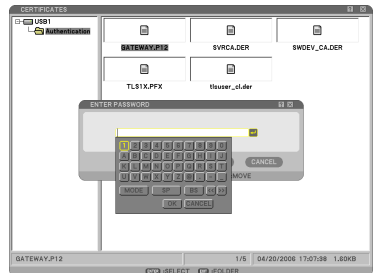
② Highlight a digital certificate and press the ENTER button.

12 Select [PASSWORD] field and press the ENTER button.

The character entry screen (software keyboard) will be displayed. Set the password of the private key. A password must be 1 character or more and 32 characters or less.

The selected digital certificate file will be installed on the projector.

- When the root CA certificate is not included in the file that was selected in Step 11, proceed to Step 13. When the root certification authority certificate is included, proceed to Step 15.



- 13 Use the **SELECT ▼** button to select **[CA CERTIFICATE]** and press the **ENTER** button.

A list of files (thumbnail screen) will be displayed.

- 14 On the thumbnail screen, select a digital certificate (DER format file) saved in your USB memory device and press the **ENTER** button.

- Select your root CA certificate here.
The selected digital certificate will be installed on the projector.

- 15 After completing required settings, use the **SELECT ▼** button to select **[OK]** and press the **ENTER** button.

The **[WIRELESS]** page will be returned.

- 16 Use the **SELECT ▼** button to select **[RECONNECT]** and press the **ENTER** button.

- 17 Use the **SELECT ▼** button to select **[OK]** and press the **ENTER** button.

This will complete setting **[EAP-TLS]** for **[EAP TYPE]** in **[WPA-EAP]** or **[WPA2-EAP]**.

HINT:

Clearing the digital certificate that is installed on the projector

To clear the digital certificate installed on the projector, follow the steps below. By doing the following procedure, all the digital certificates for the currently displayed profile will be cleared.

- 1 Select **[CLEAR CERTIFICATES]** in the bottom left of the **[ADVANCED SETTINGS]** screen and press the **ENTER** button.

A message for confirmation will be displayed.

- 2 Select **[YES]** and press the **ENTER** button.

The digital certificates will be cleared.



HINT:

- The PKCS#12 format digital certificate including a CA certificate will be installed as a root CA certificate.
-

② Selecting [PEAP-MSCHAPv2] for [EAP TYPE]:

- ⑨ From the [AUTHENTICATION] page, use the SELECT ▼ button to select [EAP TYPE] field and press the ENTER button.**

The pull-down list will be displayed.

- ⑩ Use the SELECT ▼▲ button to select [PEAP-MSCHAPv2] and press the ENTER button.**



- ⑪ Use the SELECT ▼ button to select [USER NAME] field and press the ENTER button.**

The character entry screen (software keyboard) will be displayed. Set a user name.

- A user name must be 32 characters or less.
- See page 26 of “Wired and Wireless Network Setup Guide” for using the software keyboard to enter characters.



- ⑫ After completing setting a user name, use the SELECT ▼ button to select the [PASSWORD] field and press the ENTER button.**

The character entry screen (software keyboard) will be displayed. Set a password.

- A password must be 32 characters or less.

- 13 After completing setting the password, use the **SELECT ▼** button to select [CA CERTIFICATE] field and press the **ENTER** button.

A list of files (thumbnail screen) will be displayed.

- For operating the thumbnail screen, see “5. Using the Viewer” in the “User’s Manual” (PDF).
- To return to the [AUTHENTICATION] page, press the EXIT button.



NOTE:

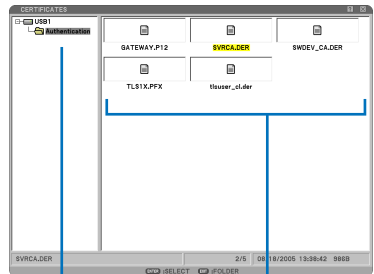
Installing a digital certificate

You can install each digital certificate (client certificate and CA certificate) for [PROFILE 1 (or 2)] on a file-by-file basis.

- Install a root CA certificate for a CA certificate.
- If you install a digital certificate over your existing digital certificate, the existing digital certificate will be overwritten with the new digital certificate.
- Once a digital certificate has been installed, its information cannot be deleted even if you stop setting WPA-EAP or WPA2-EAP.

- 14 On the thumbnail screen, select a digital certificate (DER format file) saved in your USB memory device and press the **ENTER** button.

- Select your root CA certificate here.
The selected digital certificate will be installed on the projector.



- 1 Select a USB memory and press the ENTER button.

- 2 Highlight a digital certificate and press the ENTER button.

- 15 After completing required settings, use the **SELECT ▼** button to select [OK] and press the **ENTER** button.

The [WIRELESS] page will be returned.

- 16 Use the **SELECT ▼** button to select [RECONNECT] and press the **ENTER** button.

- 17 Use the **SELECT ▼** button to select **[OK]** and press the **ENTER** button.

This will complete setting **[PEAP-MSCHAPv2]** for **[EAP TYPE]** in **[WPA-EAP]** or **[WPA2-EAP]**.

HINT:

Clearing the digital certificate that is installed on the projector

To clear the digital certificate installed on the projector, follow the steps below.

By doing the following procedure, all the digital certificates for the currently displayed profile will be cleared.

- 1 Select **[CLEAR CERTIFICATES]** in the bottom left of the **[ADVANCED SETTINGS]** screen and press the **ENTER** button.

A message for confirmation will be displayed.

- 2 Select **[YES]** and press the **ENTER** button.

The digital certificates will be cleared.



4. Checking Authentication Status on [INFORMATION] Screen

You can check your authentication status on the [INFORMATION] screen from the on-screen menu.

1 Display the [INFORMATION] screen.

- Use the first tab (main menu) to select [INFORMATION].



2 Select the [WIRELESS LAN(1)] tab.

The current authentication status will be displayed in the [AUTHENTICATION] field.

The meanings of these status statements are described below.

Statement	Authentication status
Authenticated	Authentication is done correctly.
Failure	Authentication failed.
Authenticating...	Authentication is in process.
Expired	The digital certificate is expired. Or [DATE, TIME PRESET] is not set correctly.
Time Error	The [DATE, TIME PRESET] has been cleared. Set the correct date and time.

NEC