

# LT265/LT245

## Wired and Wireless Network User's Guide

Describes what each software can be used for, how to install it, and how to set the LAN settings on the projector and the personal computer. ●

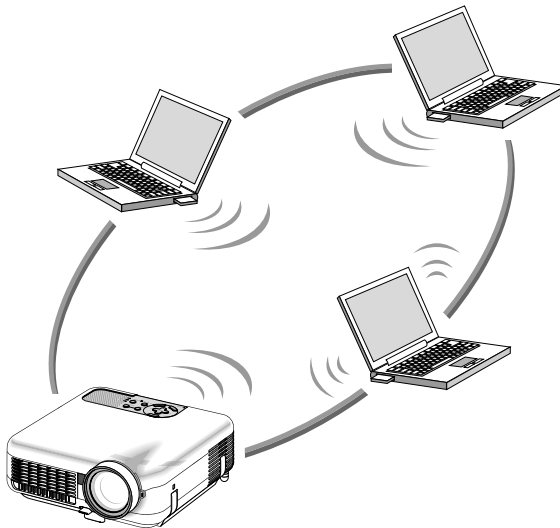
Explains the basic operation of the software. ●

Explains how to perform troubleshooting and get information about downloading service. ●

Preparation

Operation

Appendix



This manual describes the software included on the supplied User Supportware 2 CD-ROM.

# Introduction

Thank you for purchasing the NEC full-color projector LT265/LT245 (hereafter referred to as the "LT265/LT245" or "projector").

The projector is equipped with the following features so that you can give effective presentations.

- LAN port (RJ-45), USB port (type A), PC card slot (TYPE II) supplied as standard
- Viewer that displays images from a flash memory card\*<sup>1</sup> and USB memory\*<sup>1</sup>
- Wireless LAN card supplied as an option\*<sup>2</sup>

\*<sup>1</sup> The projector is not supplied with a flash memory card or USB memory.

\*<sup>2</sup> For a list of countries where NEC's optional wireless LAN card (NWL-100 series) is available, refer to the Service Page for NEC Projectors (<http://www.nec-pj.com>).

The projector is also supplied with User Supportware 2 CD-ROM in which five programs of software are stored for effective use of these features. The software stored on this CD-ROM are as follows.

Each program runs on Windows XP and Windows 2000.

- Image Express Utility 2.0
- Desktop Control Utility 1.0
- Ulead Photo Explorer 8.0 SE Basic
- Viewer PPT Converter 3.0
- PC Control Utility 3.0

This document explains the basic operations of the above equipment and functions. For details of operations, refer to help function of the software.

For the network settings on the personal computer, refer to the User's Manual for the personal computer or the peripheral equipment for the network.

Use a wireless LAN card conforming to the Wi-Fi standard for your personal computer.

## NOTES

- (1) The contents of this guide may not be reprinted in part or whole without permission.
- (2) The contents of this guide are subject to change without notice.
- (3) Great care has been taken in the preparation of this guide; however, should you notice any questionable points, errors or omissions, please contact us.
- (4) Notwithstanding article (3), NEC will not be responsible for any claims on loss of profit or other matters deemed to result from using the Projector.
- (5) Guides with incorrect collating or missing pages will be replaced.

## Cautions on Usage

### Warning

- A wireless LAN card is not meant for use with facilities or equipment involving the safeguard of human life, such as medical equipment, nuclear facilities or equipment, aeronautical or space equipment, transportation facilities or equipment, etc., or with facilities or equipment requiring high levels of reliability. Do not use the card in such cases.
- Do not use a wireless LAN card near cardiac pacemakers.
- Do not use a wireless LAN card near medical equipment. Doing so may cause electromagnetic interference with the medical equipment, possible leading to death.
- Do not disassemble or modify a wireless LAN card in any way. Doing so could lead to fire or electric shock.
- Do not use a wireless LAN card in wet or moist places, such as in bathrooms or near humidifiers. Doing so could lead to fire, electric shock or malfunctions.

### Caution

To prevent damage due to static electricity, eliminate any static electricity from your body before touching a wireless LAN card.

- Static electricity from the human body may damage a wireless LAN card. Before touching the card, touch an aluminum window frame, a door knob, or some other metal object around you to eliminate the static electricity.

### Caution

The radio waves used by a wireless LAN card pass through the wood or glass used in normal homes (but not through window panes with built-in metallic mesh).

The radio waves do not pass through iron reinforcing bars, metal or concrete, so a wireless LAN card cannot be used for communicating through walls or floors made with these materials.

# Contents

**Introduction** ..... **Inside cover**  
**Cautions on Usage** ..... **1**  
**Contents** ..... **2**

## **Preparation**

**1. What You Can Do with User Supportware 2** ..... **6**  
    1-1. Image Express Utility 2.0 ..... 6  
    1-2. Desktop Control Utility 1.0 ..... 8  
    1-3. Ulead Photo Explorer 8.0 SE Basic ..... 9  
    1-4. Viewer PPT Converter 3.0 ..... 10  
    1-5. PC Control Utility 3.0 ..... 10  
**2. Operating Environment** ..... **11**  
    2-1. Supported Projector ..... 11  
    2-2. Operating Environment ..... 12  
**3. Installing User Supportware 2** ..... **13**  
    3-1. Installation ..... 13  
    3-2. Uninstalling ..... 19  
**4. Using Help** ..... **20**  
    4-1. Displaying Help ..... 20  
    4-2. Help Screen Layout ..... 21  
**5. Connecting LAN Cable** ..... **22**  
**6. Attaching Wireless LAN Card** ..... **23**  
**7. Setting the LAN Setting of Projector** ..... **25**  
    7-1. Displaying On-Screen Menu (LAN Mode) ..... 25  
    7-2. Wired LAN ..... 27  
    7-3. Wireless LAN ..... 31  
**8. Setting the LAN Setting of Personal Computer**  
    ([Example] Wireless LAN of Windows XP:Ad Hoc connection) ..... **38**

## Operation

<b>1. Image Express Utility 2.0</b>	<b>45</b>
1-1. Sending Images to Projector	45
1-2. Holding Conferences	48
1-3. Participating in Conference	50
<b>2. Desktop Control Utility 1.0</b>	<b>54</b>
2-1. Manipulating Desktop Screen by Using Projector	54
<b>3. Ulead Photo Explorer 8.0 SE Basic</b>	<b>61</b>
3-1. Sending Slideshow of Image to Projector	61
<b>4. Viewer PPT Converter 3.0</b>	<b>65</b>
4-1. Converting PowerPoint file and displaying it with viewer function of projector	65
<b>5. PC Control Utility 3.0</b>	<b>69</b>
5-1. Controlling Projector from Personal Computer	69

## Appendix

<b>Troubleshooting</b>	<b>74</b>
<b>About the Downloading Service</b>	<b>78</b>
<b>For Information</b>	<b>78</b>



# Preparation

This chapter explains the features of the software on User Supportware 2 CD-ROM, how to install the software, and how to set LAN.

---

1. What You Can Do with User Supportware 2 .....	6
2. Operating Environment .....	11
3. Installing User Supportware 2 .....	13
4. Using Help .....	20
5. Connecting LAN Cable .....	22
6. Attaching Wireless LAN Card .....	23
7. Setting the LAN Setting of Projector .....	25
8. Setting the LAN Setting of Personal Computer ([Example] Wireless LAN of Windows XP: Ad Hoc connection) .....	38

## 1. What You Can Do with User Supportware 2

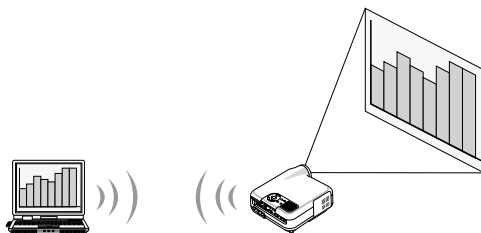
### 1-1. Image Express Utility 2.0

(🔄 Operation: page 45)

Image Express Utility 2.0 is a software tool used to send the screen of your personal computer to the projector via a network, without the signal cables.

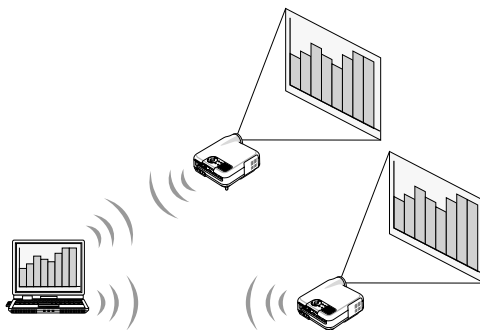
- **High-speed, high-quality image transmissions based on NEC's original compression algorithm**

NEC's original compression algorithm allows high-quality images to be sent over the network at high speed, from your personal computer to the projector.



- **Simultaneous projection by multiple projectors**

Images can be sent from a personal computer to not only one projector but also to two or more projectors at the same time.



- **"Easy Connection" function for connecting wireless LAN**

By using "Easy Connection" function<sup>\*1</sup>, the complicated setting of wireless LAN can be simplified.

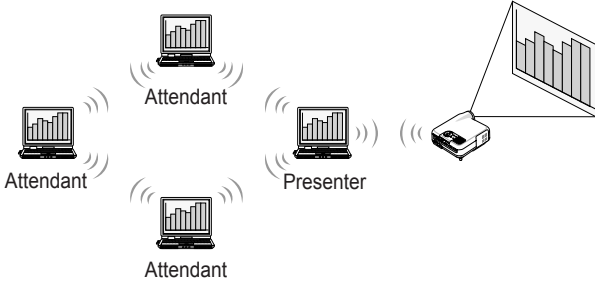
<sup>\*1</sup> This function can be used when Windows XP is used as the OS and when you have a "Computer Administrator" privilege. The communication mode is set to "802.11 Ad Hoc".

The "Easy Connection" function cannot be used with Windows 2000.



● **Projected images can be transferred and saved to personal computers.**

When "Meeting Mode" is used, projected images can be sent to the personal computers of all the participants (attendants) of a "Meeting". The received images can be saved to your personal computer with a memo (text data) attached.

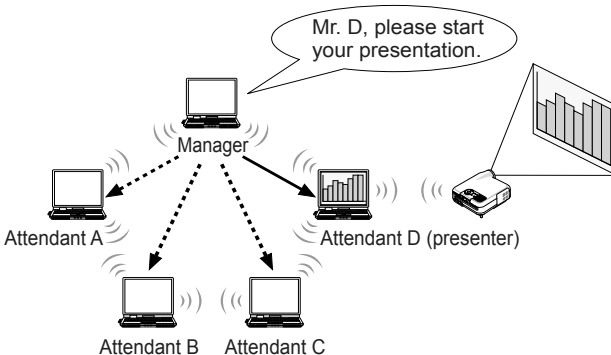


● **1-click switching of presenter**

When switching to another presenter during the conference, the participants (attendants) can simply click a button to switch over to the new presenter.

● **Central management of the projecting personal computer**

Using the Training Mode allows you to use a single personal computer (Manager) to manage which personal computer (Attendant) projects. Possible operation includes switching projecting personal computers to project from, as well as temporarily terminating communication with the projector.



**Note**

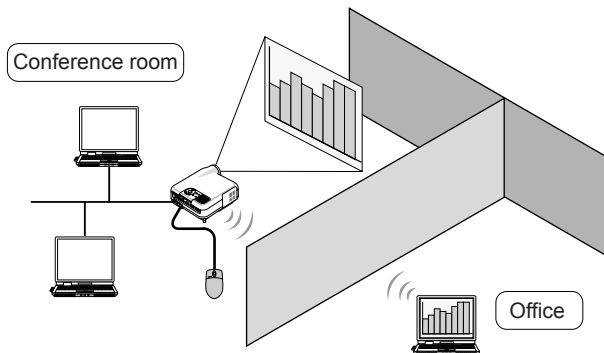
The Training Mode is not installed via the "Typical" installation option when Image Express Utility 2.0 is installed. To use Training Mode, select "Extension" installation option on the install selection screen that is displayed while Image Express Utility 2.0 installation is in progress, and select "Training Mode (Attendant)" or "Training Mode (Manager)".

### 1-2. Desktop Control Utility 1.0

(🔄) **Operation: page 54**

Desktop Control Utility 1.0 is software that operates the desktop screen of a personal computer at a remote location from the projector by using a network.

- A commercially available USB mouse is connected to the projector to operate the personal computer.
- Suppose, for example, a PowerPoint file to be presented in a conference is saved to a personal computer in your office. If this personal computer is connected to the projector in the conference room with LAN when the conference is held, the desktop screen of the personal computer in your office (Windows 2000/XP) can be projected and the PowerPoint file can be presented by operating the projector. In other words the personal computer does not need to be brought into the conference room.



#### Important

- You can use the Desktop Control Utility 1.0 to operate a personal computer located in a separate room from the projector over a network. Therefore, care must be exercised to prevent any third party from viewing the screen of your personal computer (important documents), copying files, or turning off the power. NEC assumes no liability for any loss or damages arising from information leak or system failure while you are using Desktop Control Utility 1.0.
- In the Windows operating system, click [Control Panel] → [Performance and Maintenance] → [Power Options] → [System Standby] → [Never]. This will disconnect LAN connection when the personal computer goes in the standby mode while the Desktop Control Utility 1.0 is being used.
- The screen saver function is off while Desktop Control Utility 1.0 is running.

## 1-3. Ulead Photo Explorer 8.0 SE Basic

(🔄 **Operation: page 61**)

Ulead Photo Explorer 8.0 SE Basic (hereafter referred to as "Ulead Photo Explorer 8.0") is a multimedia image file management tool developed by Ulead Systems, Inc. This tool has functions to capture images from a digital camera or scanner and to process or edit images, as well as image file management functions. In addition, slideshows and screen savers can also be easily created.

- Ulead Photo Explorer 8.0 in the User Supportware 2 CD-ROM has functions that allow you to use the projector more conveniently, in addition to the functions that come with the software, for when an NEC projector is connected.

Additional functions are listed below.

For details of each function, refer to the help function of Ulead Photo Explorer 8.0.

- **Image transmission**  
Sends images to the projector.
  - **PowerPoint file conversion**  
Converts a PowerPoint file into an image file.
  - **Logo transfer**  
Registers an image file as the logo data of the projector.
  - **Capture**  
Saves the screens of the personal computer as image files.
  - **Slideshow start**  
Sends the image of a slideshow to the projector and executes the slideshow on the projector.
  - **Viewer output**  
Converts a slideshow into an index file that can be played back by the viewer function of the projector and outputs the index file.
  - **Communication setting (connection destination selection)**  
Sets up communication to connect the projector.
- The personal computer and projector may be connected with wired LAN, wireless LAN, or a serial cable.

### 1-4. Viewer PPT Converter 3.0

(🔄) **Operation: page 65)**

Viewer PPT Converter 3.0 is software that converts files created with PowerPoint 95/97/2000/2002/2003 into an index file that can be displayed with the viewer function of the projector.

- When converting, specify a flash memory card or USB memory as the destination to which the index file is to be saved. Then you can easily make your presentation by simply inserting the flash memory card or USB memory into the projector (viewer function of the projector).
- If PowerPoint 2000/2002/2003 is installed in your personal computer, you can activate Viewer PPT Converter 3.0 from PowerPoint (PPT Converter add-in is automatically registered to PowerPoint).

### 1-5. PC Control Utility 3.0

(🔄) **Operation: page 69)**

PC Control Utility 3.0 is software that allows you to operate the projector from the personal computer when the personal computer and the projector are connected with LAN (wired or wireless) or a serial cable.

- You can operate the projector as follows from your personal computer.  
For details of each function, refer to the help function of PC Control Utility 3.0.
  - Power on/off
  - Input signal switching
  - Muting (temporarily disabling audio/video)
  - Freezing (locking the projected image)
  - Logo image transmission

# 2. Operating Environment

## 2-1. Supported Projector

User Supportware 2 supports the following NEC projector (as of November 2004)

LT Series	LT265 <sup>*1</sup> /LT245 <sup>*1</sup>
-----------	--

- \*1:
- Comes standard with a LAN port (RJ-45).
  - For wireless connection.
    - Use the separately available NEC optional wireless LAN card (NWL-100 series).
    - Use a Wi-Fi compliant wireless LAN adapter for the personal computer.
    - If connecting multiple personal computer and projectors, use NEC's optional wireless LAN card (NWL-100 series) on the personal computers for better transmission quality.
    - For a list of countries where NEC's optional wireless LAN card (NWL-100 series) is available, refer to the Service Page for NEC Projectors (<http://www.nec-pj.com>).



PC Control Utility 3.0 can be used with projectors other than the LT265/LT245. For details, refer to the help function of PC Control Utility 3.0.

## 2. Operating Environment

---

### 2-2. Operating Environment

The following is the operating environment for Image Express Utility 2.0. For the operating environment of other software, please refer to the help function of each software.

Supported OS	Windows 2000 Professional Windows XP Home Edition Windows XP Professional <ul style="list-style-type: none"><li>• Windows power-saving function is not supported.</li></ul>
Supported hardware	IBM PC/AT compatible personal computers CD-ROM drive required for installation
CPU	Sender personal computer Pentium MMX processor or higher required Pentium 800 MHz or higher recommended Recipient personal computer Pentium III 800 MHz or higher required Pentium III 1.2 GHz or higher recommended
Memory	Windows XP 128 MB or more required (192 MB or more recommended) <ul style="list-style-type: none"><li>• More memory may be necessary if other applications run at the same time.</li></ul> Windows 2000 64 MB or more required (128 MB or more recommended) <ul style="list-style-type: none"><li>• More memory may be necessary if other applications run at the same time.</li></ul>
Network environment	TCP/IP-compatible LAN or wireless LAN environment required
Resolution	1024 dots x 768 lines recommended
Screen Colors	High Color (15 bits, 16 bits) True Color (24 bits, 32 bits) <ul style="list-style-type: none"><li>• 256 or fewer colors are not supported.</li></ul>

## 3. Installing User Supportware 2

### Note

- The following description applies to Windows XP.
- When installing/uninstalling the software in Windows XP, you must log on as a user with "Computer Administrator" privileges.  
For Windows 2000, log on as a user with "Administrators" privileges.

### 3-1. Installation

#### ■ Before starting installation

##### Preparation:

- Turn on your personal computer and start Windows.
- Before starting the installation, exit all running applications. The installation may not complete properly if other applications are running.

#### 1 Insert the User Supportware 2 CD-ROM into the CD-ROM drive.

The following menu screen will be displayed.



### Reference

If the above menu is not displayed, follow these steps.

1. Click [Start] of Windows.
2. Click [Run:].
3. In the [Open:] field, enter the CD-ROM drive name<sup>\*1</sup> (e.g., "Q:") followed by "SETUP.EXE" (e.g., "Q:\SETUP.EXE").

<sup>\*1</sup> The CD-ROM drive name will vary depending on your personal computer's configuration.

4. Click [OK].  
The menu will be displayed.

### 3. Installing User Supportware 2

---

**2 Click [Please read this first].**

"NEC Projector User Supportware 2 Readme File" will be displayed.

**3 After reading the readme, click the [×] on the [Please read this first] window.**

The readme window will close.

## ■ Installing Image Express Utility 2.0

**1 Click [Installing Image Express Utility 2.0] on the menu screen.**

Preparation for the installation will begin.

Once the preparation is complete, the "Welcome to the InstallShield Wizard for Image Express Utility 2.0" screen will be displayed.

**2 Click [Next].**

The "License Agreement" screen will be displayed.

Carefully read the contents of the "END USER LICENSE AGREEMENT".

**3 If you agree to the End User License Agreement, click [I accept the terms in the license agreement], then [Next].**

The "Customer Information" screen will be displayed.

**4 Input [User Name:] and [Organization:] and click [Next].**

The "Destination Folder" screen will be displayed.



- As necessary, change "Install this application for:" on the "Customer Information" screen. Usually, select "Anyone who uses this computer (all users)".

**5 Confirm the installation destination and click [Next].**

The "Setup Type" screen will be displayed.

**6 Select [Typical] or [Extension] and click [Next].**

"Ready to Install the Program" screen will be displayed.

Typical	Installs the standard function (Meeting Mode) of Image Express Utility 2.0 (  page 7).
Extension	Installs "Training (Attendant/Manager)" in addition to the standard function (Meeting Mode) of Image Express Utility 2.0 (  page 7).

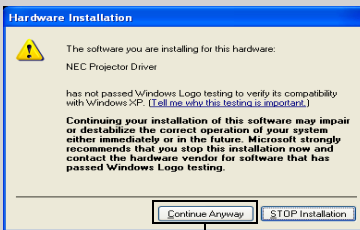


**7** In the "Ready to Install the Program" screen, click [Install].

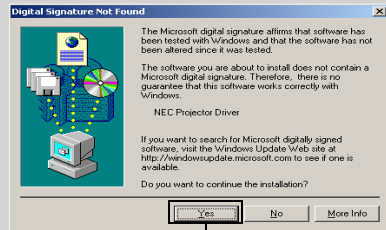
The installation will begin.

**Important**

- Immediately after installation has been started, the following screen may be displayed.

**For Windows XP**

Click

**For Windows 2000**

Click

If the above screen is displayed, click [Continue Anyway] when Windows XP is used. Click [Yes] when Windows 2000 is used.

NEC has confirmed that the driver of this software correctly runs on Windows XP and Windows 2000.

- When you install the driver, the personal computer screen will go blank momentarily.

When installation has been completed, the "InstallShield Wizard Completed" screen is displayed.

**8** Click [Finish].

A message prompting you to restart the system will be displayed.

**9** Click [Yes].

Windows will be restarted.


When the desktop screen of Windows is displayed, click [Start] → [Run:] → [CD-ROM drive name + SETUP.EXE (e.g., Q:\SETUP.EXE)], followed by [OK]. The menu screen of the User Supportware 2 CD-ROM will be displayed again.

## ■ Installing Desktop Control Utility 1.0

### 1 Click [Installing Desktop Control Utility 1.0] in the menu screen.

Preparation for the installation will begin.

When preparation is complete, "Welcome to the InstallShield Wizard for Desktop Control Utility 1.0" screen is displayed.

- The procedure is the same as that of Image Express Utility 2.0 (  page 14).
- Desktop Control Utility 1.0 does not have a screen for selecting "Typical" or "Extension".
- After completion of the installation, a message prompting you to restart the system is displayed. Click [Yes].
- When the desktop screen of Windows is displayed, redisplay the menu screen of the User Supportware 2 CD-ROM.

## ■ Installing Ulead Photo Explorer 8.0

### Important

#### • Be sure to register your software.

Technical support for Ulead Photo Explorer 8.0 is provided to registered users only. Note that user registration for Ulead Photo Explorer 8.0 included on the User Supportware 2 CD-ROM is possible only via the registration site that is displayed during the installation of the software. Be sure to connect your personal computer to Internet when installing Ulead Photo Explorer 8.0.

#### • About the software license

Ulead Photo Explorer 8.0 in the User Supportware 2 CD-ROM may only be used on a single personal computer.

If you need to install Ulead Photo Explorer 8.0 onto multiple personal computers, purchase an additional User Supportware 2 CD-ROM for each additional personal computer you wish to install Ulead Photo Explorer 8.0 onto.

### 1 Click [Installing Ulead Photo Explorer 8.0] on the menu screen.

Ulead Photo Explorer 8.0's setup screen will be displayed.



**2 Click [Install Ulead Photo Explorer 8.0].**

The "Welcome to Ulead Photo Explorer 8.0 SE Basic Setup" screen will be displayed.

**3 Click [Next].**

The "License Agreement" screen will be displayed.  
Carefully read the contents of the "End User License Agreement".

**4 If you agree to the End User License Agreement, click [Yes].**

The "User Information" screen will be displayed.

**5 Input [Name:] and [Company:], and click [Next].**

The "Choose Destination Location" screen will be displayed.

- This software does not require you to input the "Serial Number".
- After that, follow the instructions on the screen to continue with the installation.
- When installation is complete, the menu screen of the User Supportware 2 CD-ROM is displayed again.

**■ Installing Viewer PPT Converter 3.0****1 Click [Installing Viewer PPT Converter 3.0] on the menu screen.**

Preparation for the installation will begin.

When preparation is complete, the "Welcome to the InstallShield Wizard for Viewer PPT Converter 3.0" screen is displayed.

- After that, follow the instructions on the screen to continue the installation.
- When installation is complete, the menu screen of the User Supportware 2 CD-ROM is displayed again.

**Note**

- When Viewer PPT Converter 3.0 has been installed, once start Viewer PPT Converter 3.0 once with the privilege used for installation. Then exit from Viewer PPT Converter 3.0 without doing anything.

**• Starting**

Click Window's [Start] → [All Programs] → [NEC Projector User Supportware 2] → [Viewer PPT Converter 3.0] → [Viewer PPT Converter 3.0], in that order.

#### ■ Installing PC Control Utility 3.0

**1 Click [Installing PC Control Utility 3.0] in the menu screen.**

Preparation for the installation will begin.

When preparation is complete, "Welcome to the InstallShield Wizard for PC Control Utility 3.0" screen is displayed.

- After that, follow the instructions on the screen to continue the installation.
- When installation is complete, the menu screen of the User Supportware 2 CD-ROM is displayed again.

#### ■ Completing installation

**1 Click [Exit] on the menu screen.**

The menu screen will close.

**2 Remove the User Supportware 2 CD-ROM from the CD-ROM drive.**

## 3-2. Uninstalling

The following procedure removes the installed software from the hard disk. Uninstall one software program at a time.

**1** Click **[Control Panel]** in the start menu → **[Add or Remove Programs]**.

A list of programs currently installed will be displayed.

**2** From the list of installed software, select the software to uninstall.

**3** Click **[Remove]** on the right of the screen.

Uninstallation of the program will begin.

- To uninstall Ulead Photo Explorer 8.0, click **[Change/Remove]**, **[Remove]**, and **[Next]**.

**4** After an installation of the program is complete, a message prompting you to restart the system may be displayed. In this case, click **[Yes]**.

### Note

- When installing Viewer PPT Converter 3.0 onto a personal computer that has PowerPoint installed, Viewer PPT Converter 3.0 is automatically registered as a PowerPoint add-in. The Viewer PPT Converter 3.0 add-in is not removed by uninstalling Viewer PPT Converter 3.0. Please refer to Viewer PPT Converter 3.0 Help to unregister the add-in.

## 4. Using Help

The functions and operation of each software are described on the Help screen. This section introduces how to display and use the Help screen.

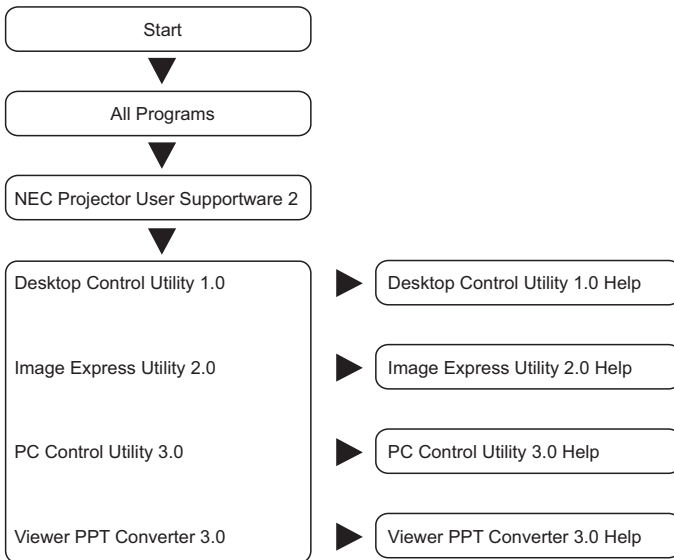
### Note

- The following instructions use operations under Windows XP as an example.
- Before displaying Help, install each software onto your personal computer from the User Supportware 2 CD-ROM. You cannot run the programs nor view Help directly from the CD-ROM.

### 4-1. Displaying Help

#### ■ Displaying Helps other than Ulead Photo Explorer 8.0

Click in the following order.



### Reference

You can also display the Help by starting each program and clicking the [Help] menu or [Help] icon of that program.

## ■ Displaying Ulead Photo Explorer 8.0 Help

To display the Help of Ulead Photo Explorer 8.0, start the software and make your selection from the [Help] menu.

- 1 Click [All Programs] in the start menu → [Ulead Photo Explorer 8.0 SE Basic] → [Ulead Photo Explorer 8.0 SE Basic], in that order.

The Ulead Photo Explorer 8.0 will start.

- 2 From the Ulead Photo Explorer 8.0 menu bar, select [Help] → [Ulead Photo Explorer Help] or [NEC Projector User Supportware 2 Help].

## 4-2. Help Screen Layout

### [Hide] button

Shows/hides the left pane.

### [Back] button

Displays the previously displayed topic.

### [Forward] button

Displays the previously displayed topic when using the [Back] button to step back through the topics.

### [Print] button

Prints the displayed Help topic.

### [Contents] tab

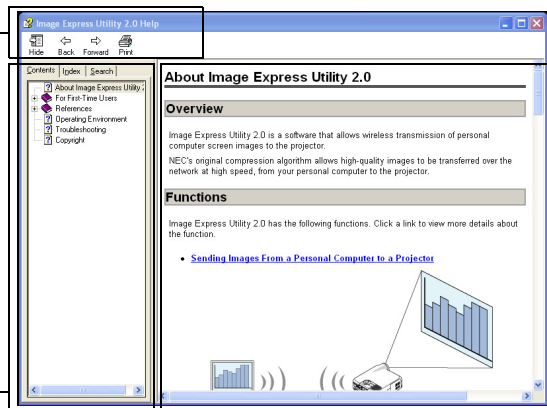
Displays the contents of Help. Select a topic to display contents in the right pane.

### [Index] tab

Displays a list of keywords for Help. Select a keyword to display the associated topics.

### [Search] tab

Searches through Help for the entered text.



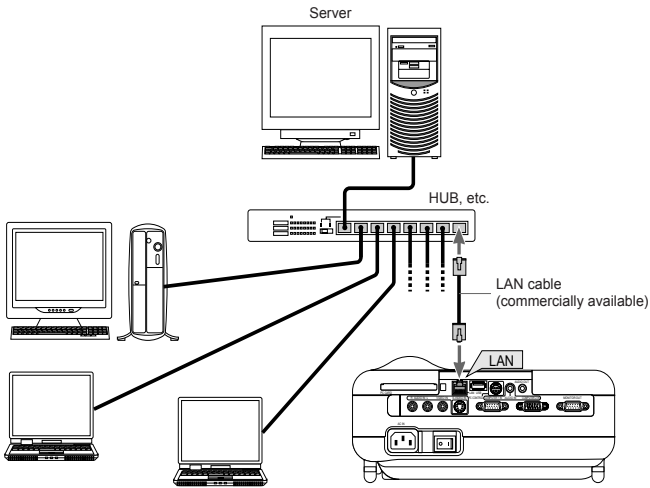
### Explanation displaying area

Displays content for the topic selected in the left pane.

## 5. Connecting LAN Cable

Connect a LAN cable to the LAN port (RJ-45) of the projector when connecting the projector to wired LAN.

After connecting the LAN cable to the projector, set the required settings for the projector (🔄 page 25).





## 6. Attaching Wireless LAN Card

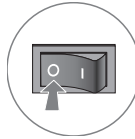
Insert the wireless LAN card into the PC card slot on the rear panel of the projector.

### Important

- The wireless LAN card must be inserted into the PC card slot in the correct direction. It cannot be inserted in the reverse direction. If the card is inserted in the reverse direction with excessive force applied, the pins in the projector and the PC card slot may break. Be sure to insert the wireless LAN card with its label facing up.
- Before touching the wireless LAN card, touch a metallic object (such as a door knob or aluminum window frame) to discharge the static electricity from your body.

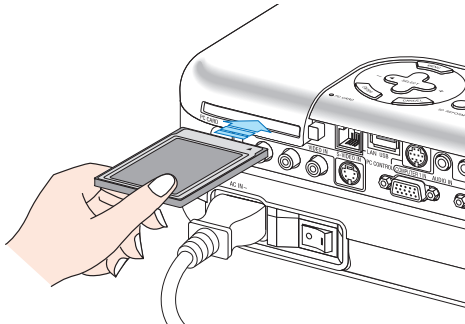
### ■ Setting card in PC card slot

- 1 Press the "O (off)" side of the main power switch of the projector.



- 2 With the label on the wireless LAN card facing up, slowly insert the card into the slot horizontally.

When the card is completely inserted into the slot, the eject button will slightly come forward.

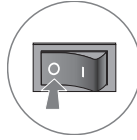


### Note

Do not apply any excessive force while inserting the card.

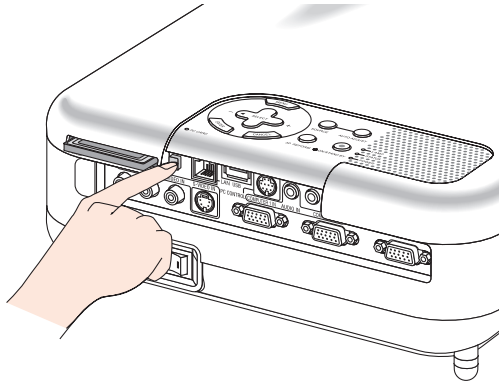
## ■ Removing card from PC card slot

- 1 Press the "O (off)" side of the main power switch of the projector.



- 2 Slowly press the PC card eject button.

The inserted card will slightly come forward.



- 3 Slowly pull out the card.

## 7. Setting the LAN Setting of Projector

### Reference

For how to turn on/off the power to the projector and how to operate the buttons and remote control of the projector, refer to "1. Introduction", "2. Installation and Connections", and "3. Projecting an Image (Basic Operation)" of "User's Manual" included in the User's Manual CD-ROM.

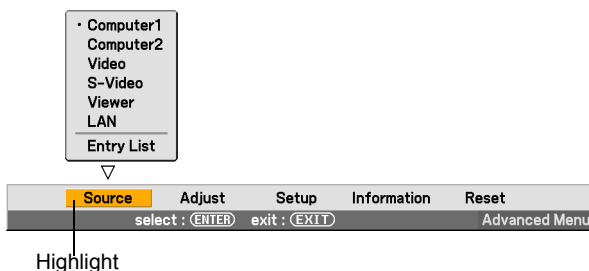
### 7-1. Displaying On-Screen Menu (LAN Mode)

#### Preparation:

Turn on the power to the projector and project images to the screen.  
It is not necessary to select the signals.

#### 1 Press the **(MENU)** button.

The on-screen menu will be displayed.

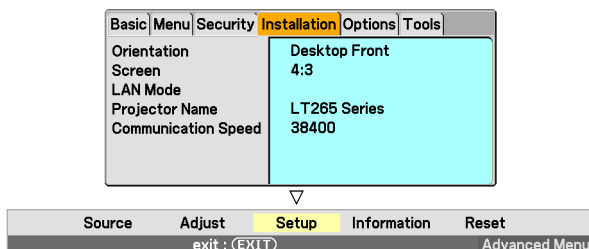


#### 2 Use the **(SELECT ►)** button to select the Setup submenu.

#### 3 Press the **(ENTER)** button.

The "Basic" tab will be highlighted.

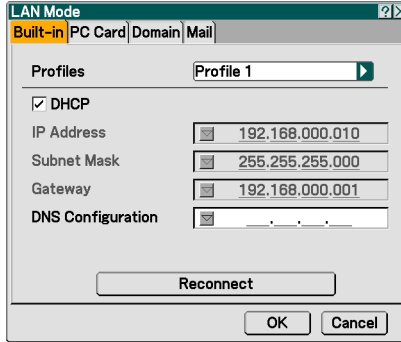
#### 4 Press the **(SELECT ►)** button three times to highlight the "Installation" tab.



## 7. Setting the LAN Setting of Projector

- 5** Press the **(SELECT ▼)** button three times to highlight "LAN Mode", and press the **(ENTER)** button.

The "LAN Mode" screen will be displayed.



- To make setting of wired LAN

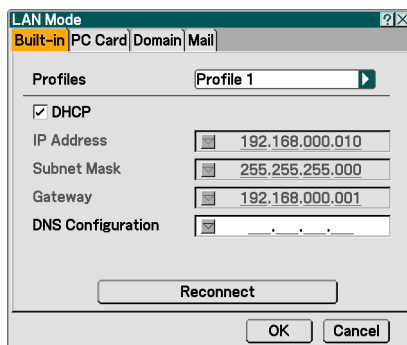
Proceed to "7-2. Wired LAN" (➡ page 27).

- To make setting of wireless LAN

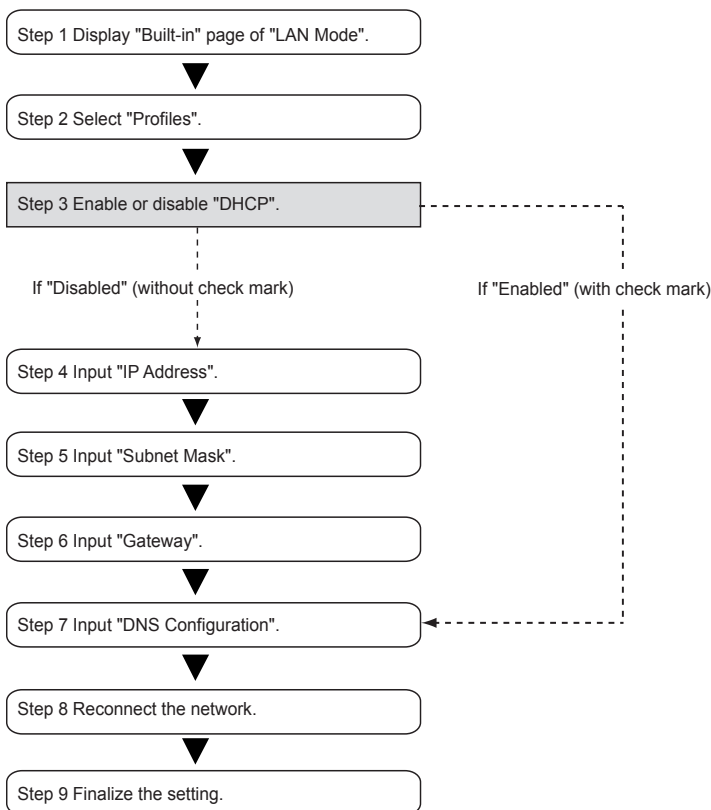
Proceed to "7-3. Wireless LAN" (➡ page 31).

## 7-2. Wired LAN

When connecting a LAN cable to the LAN port of the projector, select the "Built-in" page of "LAN Mode".



### Flow of setting



### ■ Setting LAN

#### 1 Select "Profiles".

"Profile 1" or "Profile 2" can be stored in the memory of the projector as the setting of LAN when the LAN port of the projector is used.

- <1> Press the **(SELECT ▼)** button once to highlight the "Profiles" field and press the **(SELECT ►)** button.
- <2> Use the **(SELECT ▼/▲)** button to highlight "Profile 1" or "Profile 2", and press the **(ENTER)** button.

#### 2 Set "DHCP".

Check this check box if the network to which the projector is to be connected automatically assigns the IP address via the DHCP server.

- <1> Press the **(SELECT ▼)** button once to highlight the "DHCP" check box and press the **(ENTER)** button.

A check mark will be placed.

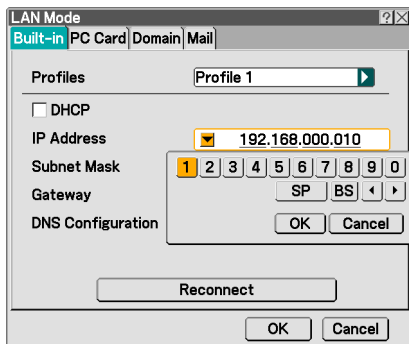
- To clear the check box, press the **(ENTER)** button once again.
- If "DHCP" is checked, move the highlight to "Reconnect" and press the **(ENTER)** button after making "DNS Configuration".
- If "DHCP" is not checked, input "IP Address", "Subnet Mask", "Gateway", and "DNS Configuration" as necessary. After each item has been set, move the highlight to "Reconnect" and press the **(ENTER)** button.

**3 Input "IP Address".**

If "DHCP" is not checked, input the IP address assigned to the projector by the administrator of the network to which the projector is connected.

<1> Press the **(SELECT ▼)** button once to highlight the "IP Address" field and press the **(ENTER)** button.

The software keyboard will be displayed.



<2> Use the **(SELECT ▼▲▶◀)** button to select a number to input, and press the **(ENTER)** button.

The characters will be input.

<3> Repeat step <2> above to input the IP address.

- Each button on the software keyboard has the following function.
  - "SP".....Inputs space.
  - "BS".....Deletes one character to the left of the character insertion position in the "IP Address" field.
  - "◀" "▶".....Moves the character insertion position in the "IP Address" field to the left or the right.
  - [OK].....Finalizes the input character and closes the software keyboard.
  - [Cancel].....Cancels the input character and closes the software keyboard.

**4 Input "Subnet Mask".**

If "DHCP" is not checked, input the subnet mask of the network to which the projector is connected.

The method of inputting is the same as that of the "IP Address" field.

**5 Input "Gateway".**

If "DHCP" is not checked, input the default gateway of the network to which the projector is connected.

The method of inputting is the same as that of the "IP Address" field.

## 7. Setting the LAN Setting of Projector

---

### **6** Input "DNS Configuration".

Set the IP address of the DNS server of the network to which the projector is connected. The method of inputting is the same as that of the "IP Address" field.

### **7** Reconnect the network.

<1> When all the above items have been input or set, use the **SELECT ▼/▲** button to highlight "Reconnect" and press the **ENTER** button.

### **8** Finalize the setting.

<1> Use the **SELECT ▼/▲** button to highlight [OK] and press the **ENTER** button.

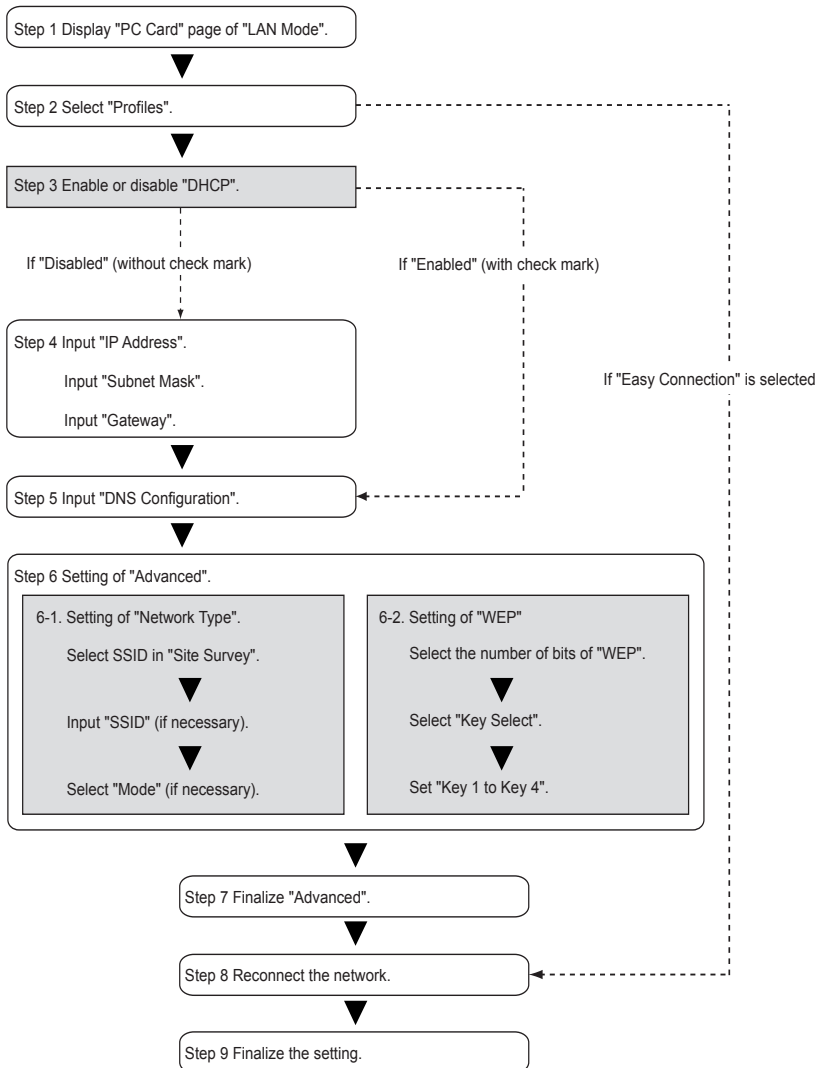
The setting will be stored in the memory of the projector.



### 7-3. Wireless LAN

When inserting the wireless LAN card into the PC card slot of the projector, use the "PC Card" page of "LAN Mode".

#### ■ Flow of Setting

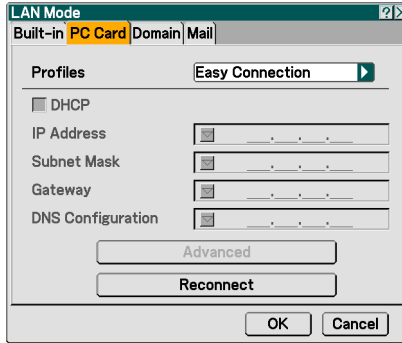


## 7. Setting the LAN Setting of Projector

### 1 Select "PC Card" page.

<1> Confirm that the highlight is on "Built-in" in the "LAN Mode" screen, press the **SELECT** button once to highlight the "PC Card" tab.

The "PC Card" page will be displayed.



### 2 Select "Profiles".

In this example, "Profile 1" is selected.

<1> Press the **SELECT** button once to highlight the "Profiles" field and press the **SELECT** button.

<2> Use the **SELECT** button to highlight "Profile 1", and press the **ENTER** button.

- "Profile 1" or "Profile 2" can be stored in the memory of the projector as the setting for LAN when wireless LAN is used.
- "Easy Connection" is a mode in which the personal computer that runs Image Express Utility 2.0 in the User Supportware 2 CD-ROM is easily connected to wireless LAN. Note that "Easy Connection" does not support software other than Image Express Utility 2.0.
- When "Easy Connection" is selected, the IP address and subnet mask do not have to be set. To use "Easy Connection", the OS of the personal computer must be Windows XP ([Computer Administrator] privilege). It cannot be used with Windows 2000. The communication mode is "802.11 Ad Hoc".

### 3 Set "DHCP".

The operation is the same as "7-2. Wired LAN" ( page 28).

### 4 Input "IP Address", "Subnet Mask", "Gateway", and "DNS Configuration".

The operation is the same as "7-2. Wired LAN" ( pages 29 and 30).

## Example of setting 1

**5** Select "Advanced".

Set "Network Type" and "WEP" (encryption) specific to wireless LAN.

<1> Use the **SELECT** button to highlight "Advanced" on the "PC Card" page and press the **ENTER** button.

The "Advanced" screen will be displayed.

## 7. Setting the LAN Setting of Projector

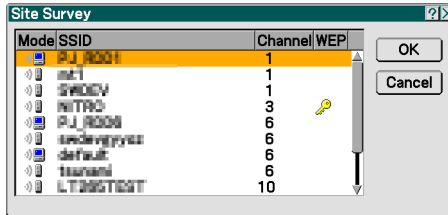
### 6 Select SSID from "Site Survey" (if necessary).

A list of SSID that can be connected to wireless LAN in this place are displayed, and the SSID that are to be connected are selected from this list. When SSID is selected from the list, the "SSID" field and "Mode" field will also be automatically set.

<1> Press the **(SELECT ▼)** button once to highlight "Site Survey" and press the **(ENTER)** button.

Searching SSID will begin.

When searching SSID is complete, a list of SSID is displayed.



Icon



..... Access point



..... Personal computer (Ad Hoc)



..... WEP setting

<2> Use the **(SELECT ▼/▲)** button to highlight the SSID of the network to be connected.

Press the **(SELECT ►)** button once to highlight [OK] and press the **(ENTER)** button.

If the SSID to be connected is not on the list, press the **(EXIT)** button.

#### Note

To connect SSID for which WEP is set, the same setting must be made on the projector (▶ page 35).

### 7 Input or edit "SSID" (if necessary).

SSID selected in "Site Survey" are automatically input.

If the highlight is moved to the "SSID" field and the **(ENTER)** button is pressed, a software keyboard is displayed and characters can be input or edited.

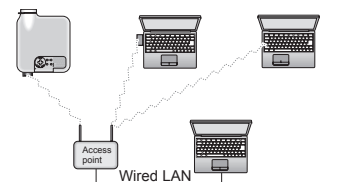
The default setting of the projectors is "NECPJ".

**8 Select "Mode" (if necessary).**

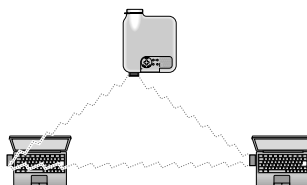
The communication mode of the SSID selected in "Site Survey" are automatically selected. The settings can be changed by moving the highlight to the "Mode" field and pressing the **(SELECT ▶)** button.

- "Infrastructure"..... This is selected if communication is performed with two or more devices connected by wired or wireless LAN via an access point.
- "802.11 Ad Hoc"..... This is selected to perform peer-to-peer communication between the projector and a personal computer by using only wireless LAN.

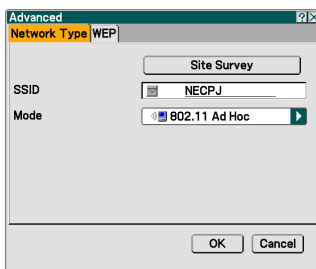
Example of connection when "Mode" is "Infrastructure"



Example of connection when "Mode" is "802.11 Ad Hoc"



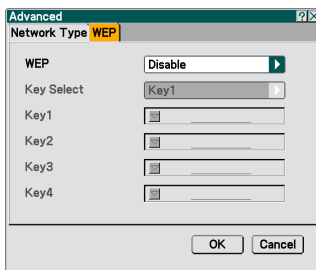
Example of setting 2

**9 Select "WEP" page (if necessary).**

Proceed to step **13** if WEP is not set.

<1> Use the **(SELECT ▼/▲)** button to select the "Network Type" tab, and press the **(SELECT ▶)** button to highlight the "WEP" tab.

The "WEP" page will be displayed.



## 7. Setting the LAN Setting of Projector

### 10 Select "WEP".

Select whether WEP (encryption) is performed or not.  
To perform WEP (encryption), set an encryption key.

- Disabled ..... WEP (encryption) is not performed. There is a danger that the contents of communication are monitored.
- 64 bits ..... 64-bit data is used as an encryption key.
- 128 bits ..... 128-bit data is used as an encryption key.
- 152 bits ..... 152-bit data is used as an encryption key.

Security is reinforced as the number of bits is increased.

### 11 Select "Key Select".

If "64 bits", "128 bits", or "152 bits" is selected from "WEP", select which of the following encryption keys, "Key 1" to "Key 4", is to be used.

### 12 Input "Key 1" to "Key 4".

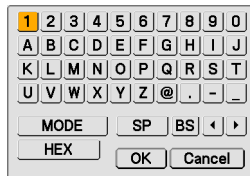
If "64 bits", "128 bits", or "152" bits is selected on the "WEP" field, input an encryption key.  
Set the same encryption key as the access point and personal computer to be connected by the wireless LAN.

Four types of keys can be input.

Selected Bits	Alphanumeric Character (ASCII)	Hexadecimal Number (HEX)
64 bits	5 characters	10 characters
128 bits	13 characters	26 characters
152 bits	16 characters	32 characters

<1> Use the **SELECT ▼/▲** button to select an item for which the encryption key is to be input and press the **ENTER** button.

The software keyboard will be displayed.



<2> Use the **SELECT** button, move the highlight to a character, and press the **ENTER** button.

<3> Repeat step <2> above to input the encryption key.

The character will be input.

- Each button on the software keyboard has the following function.
  - "◀" "▶"..... Move the character insertion position in the encryption key field to the left or the right.
  - "MODE" ..... Selects uppercase, lowercase, or special characters.
  - "SP" ..... Inputs space.
  - "BS" ..... Deletes one character to the left of the character insertion position in the encryption key field.
  - [OK] ..... Finalizes the input character and closes the software keyboard.
  - [Cancel] ..... Cancels the input character and closes the software keyboard.
  - "HEX" or "ASCII" .. Selects alphanumeric character input or hexadecimal number input.
    - When "HEX" is displayed, alphanumeric characters (ASCII) can be input.
    - To input hexadecimal numbers, move the highlight to "HEX" and press the **ENTER** button. "ASCII" will be displayed instead of "HEX", and hexadecimal numbers can be input.
    - When hexadecimal numbers can be input, "0x" is automatically displayed at the beginning of the input field.

### 13 Finalize "Advanced".

<1> Use the **SELECT** button to highlight [OK] and press the **ENTER** button.

The "PC Card" page will be displayed again.

### 14 Reconnect the network.

<1> Use the **SELECT** button to highlight "Reconnect" and press the **ENTER** button.

### 15 Finalize the setting.

<1> Use the **SELECT** button to highlight [OK] and press the **ENTER** button.

The contents of the setting will be stored in the memory of the projector.

# 8. Setting the LAN Setting of Personal Computer

([Example] Wireless LAN of Windows XP: Ad Hoc connection)

This section explains the procedure for Ad Hoc connection of wireless LAN between the personal computer and projector, by using the wireless network setting function with Windows XP.

### For wireless connection.

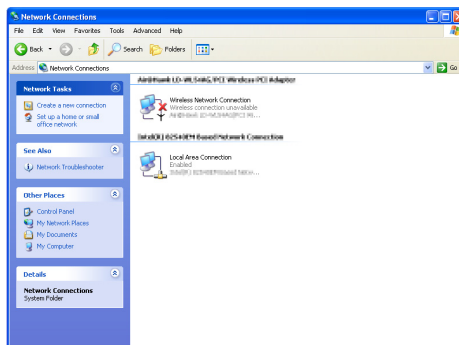
- Use the separately available NEC optional wireless LAN card (NWL-100 series).
- Use a Wi-Fi compliant wireless LAN adapter for the personal computer.
- If connecting multiple personal computer and projectors, use NEC's optional wireless LAN card (NWL-100 series) on the personal computers for better transmission quality.
- For a list of countries where NEC's optional wireless LAN card (NWL-100 series) is available, refer to the Service Page for NEC Projectors (<http://www.nec-pj.com>).

### Preparation:

- Install a commercially available wireless LAN card driver to your personal computer, and complete setup of the wireless LAN card. For how to install the driver, refer to the User's Manual of the wireless LAN card.
- Check the display of the Windows XP taskbar. If a network connection utility dedicated to a wireless LAN card is executed, terminate that utility.
- Make the wireless LAN setting of the projector. For details, refer to "6. Attaching Wireless LAN Card" (👉 page 23) and "7. Setting the LAN Setting of Projector" (👉 page 25).

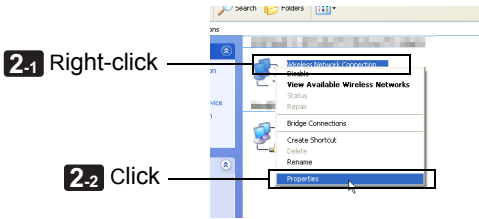
### 1 Click Windows [Start] → [Connect To] → [Show all connections].

The "Network Connections" window will be displayed.

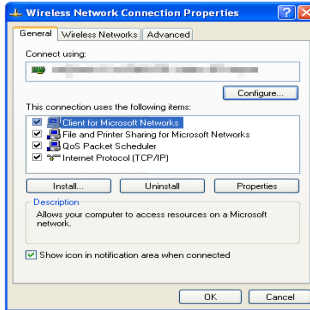




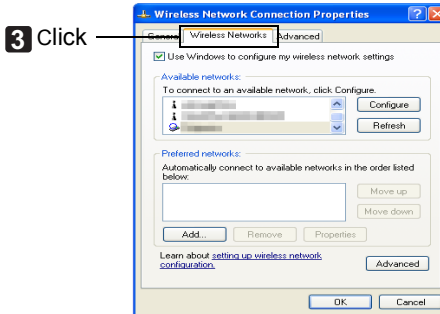
### 2 Right-click the [Wireless Network Connection] icon and click [Property].



A property window for wireless network connections will be displayed.



### 3 Click the [Wireless Network] tab.

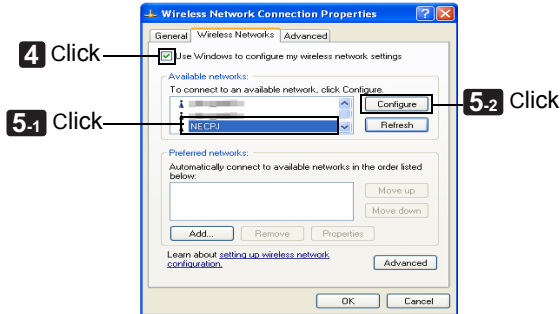


### 4 Click [Use Windows to configure my wireless network settings] and display the check mark(☑).

## 8. Setting the LAN Setting of Personal Computer

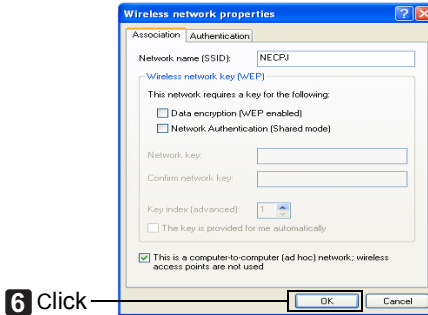
### 5 Select (click) SSID of the projector to be connected, from the list of [Available networks], and click [Configure].

- In this example, SSID of the project is set to "NECPJ" (🔄 page 35). Select (click) "NECPJ" from the list.

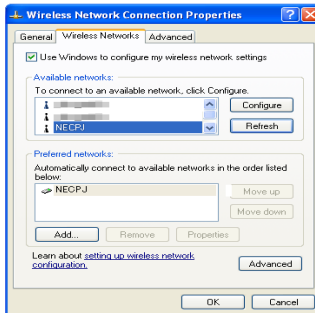


The configuration window of "NECPJ" will be displayed.

### 6 Click [OK].

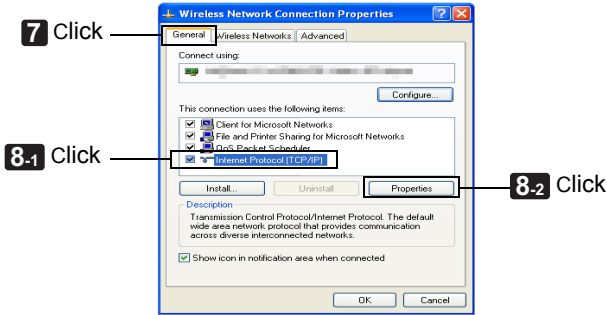


The property window for wireless network connections will be displayed again.

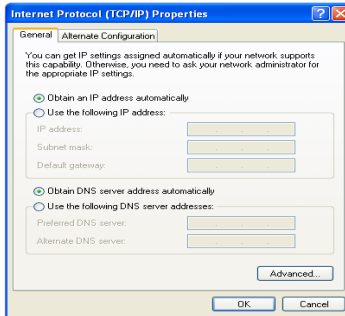


**7** Click the [General] tab.

**8** From the list of [This connection uses the following Items:], select (click) [Internet Protocol (TCP/IP)] and click [Properties].




The property window for Internet protocol (TCP/IP) will be displayed.

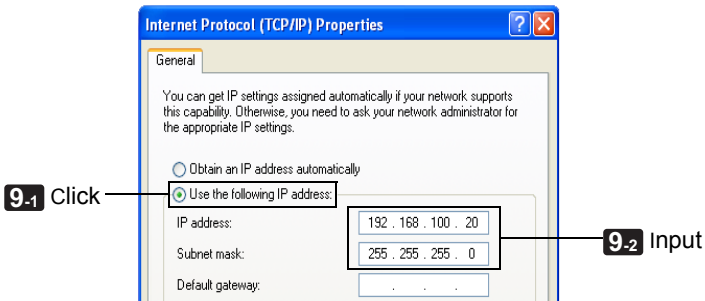


## 8. Setting the LAN Setting of Personal Computer

**9** Click [Use the following IP address:], and input [IP address] and [Subnet mask].

- If, for example, the [IP address] and [Subnet mask] of the projector are set as shown in "Example of setting 1" on page 33, set the personal computer as shown below.
- Example of setting the IP address and subnet Mask

	Projector (  page 33)	Personal computer (Screen Below)
IP address	192.168.100.010	192.168.100.20
Subnet mask	255.255.255.000	255.255.255.0



**10** Click [OK].

The property window for the wireless network connection will be displayed again.

**11** Click [Close].

This completes the Ad Hoc connection of wireless LAN on the personal computer (Windows XP).

# Operation

This chapter explains the basic operations of the software in the User Supportware 2 CD-ROM.




---

1. Image Express Utility 2.0.....	45
2. Desktop Control Utility 1.0 .....	54
3. Ulead Photo Explorer 8.0 SE Basic .....	61
4. Viewer PPT Converter 3.0 .....	65
5. PC Control Utility 3.0 .....	69

---

## Request: Connect to LAN.

To perform operations as instructed in exercise<sup>\*1</sup> in this chapter "Operation", set the LAN setting of your personal computer and projector in advance.

- <1> When using wired LAN, connect the LAN cable to the LAN port of the projector (  page 22).
- <2> To use wireless LAN, set the wireless LAN card supplied as an option to the PC card slot of the projector (  page 23).
- <3> Display the on-screen menu of the projector and set it in accordance with the wired LAN or wireless LAN (  page 25).
- <4> Set the LAN (wired or wireless) on your personal computer. For how to set the personal computer when Ad Hoc connection of wireless LAN is established between the personal computer and projector, refer to page 38.

\*1 With the exception of the operation example, "4. Viewer PPT Converter 3.0", LAN connections are unnecessary.

# 1. Image Express Utility 2.0

This section explains the following three cases as examples of operating Image Express Utility 2.0.

- (1) Transferring images to the projector
- (2) Holding a conference
- (3) Participating in a conference

For the major functions of Image Express Utility 2.0, refer to "1. What You Can Do with User Supportware 2" in the chapter "Preparation" (  page 6).

## 1-1. Sending Images to Projector

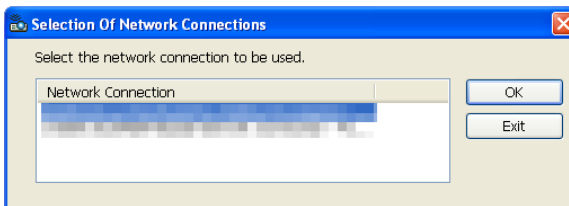
### ■ Connecting projector

- 1** Turn on the power to the projector for which LAN has been set.
- 2** Click Windows [Start] → [All Programs] → [NEC Projector User Supportware 2] → [Image Express Utility 2.0] → [Presenter], in that order.

The "Selection Of Network Connections" window will be displayed.

A list of the network equipment connected to your personal computer will be displayed.

- 3** Select the network equipment that is to be used and click [OK].

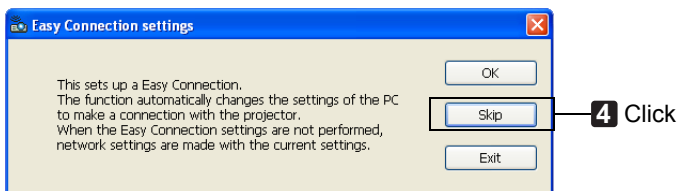


If network equipment of wireless LAN is selected, the confirmation window for "Easy Connection settings" will be displayed.

If wired LAN is selected, proceed to step **5**.

# 1. Image Express Utility 2.0

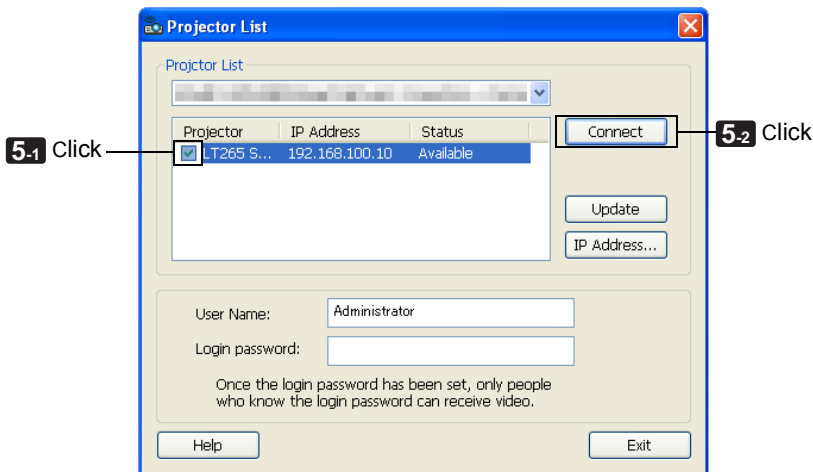
**4** Click [Skip].



The "Projector List" window will be displayed.

**5** Check(☑) the projector to connect and click [Connect].

If the name of the projector to connect is not on the list or if it is hidden, click [Update].

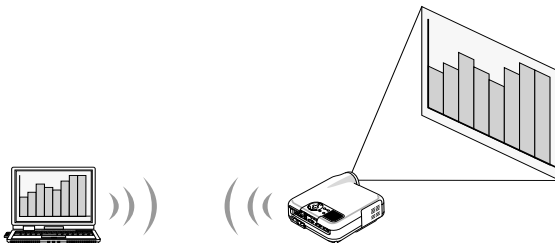


The screen of your personal computer will be projected from the projector.

At this time, the input signal of the projector will automatically change to "LAN".

## ■ Transferring images

When your personal computer is connected to the projector, the screen of the personal computer is projected from the projector as is. To make your presentation by using a PowerPoint file, open the PowerPoint file and start your presentation.



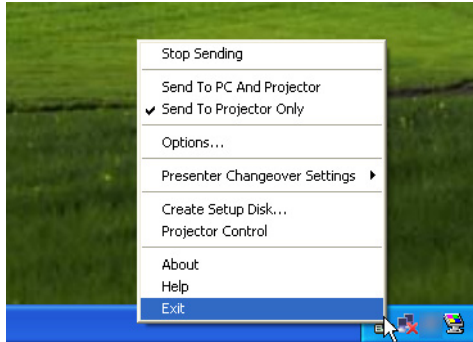


## ■ Stopping or resuming the transmission of images



The transmission of the screen of the personal computer to the projector can be temporarily stopped and then resumed.

### 1 Click the projector icon ( ) on the Windows taskbar.

A pop-up menu will be displayed.



### 2 Click [Stop Sending].

The projector icon on the taskbar will change (  →  ).



#### Note

Even if the screen of the personal computer is changed in this status, the image projected from the projector does not change.  
To manipulate the screen that should not be disclosed (projected from the projector), stop transmission.

### 3 Click the projector icon ( ) on the Windows taskbar.

A pop-up menu will be displayed.

### 4 Click [Start Sending].

The projector icon on the taskbar will change (  →  ).

The transmission of the screen for the personal computer will be resumed, and the current screen of the personal computer will be projected from the projector.

### ■ End the transmission of images

Exit Image Express Utility 2.0.

- 1** Click the projector icon (  ) on the Windows taskbar.

A pop-up menu will be displayed.


- 2** Click [Exit].

"Saving Of File For Reopening Meeting" will be displayed.

- 3** Click [Exit].

## 1-2. Holding Conferences

### ■ Holding conferences

- 1** Follow steps **1** through **5** in "n Connecting Projector" of "1-1. Sending Images to Projector" (  page 45).

The screen of your personal computer will be projected from the projector.

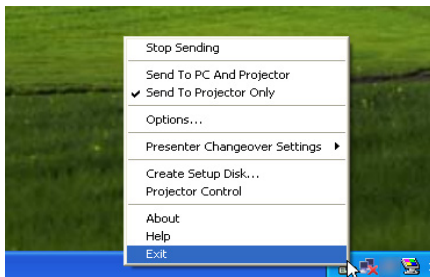
### ■ Disclose a file to the participants of the conference.

#### Note

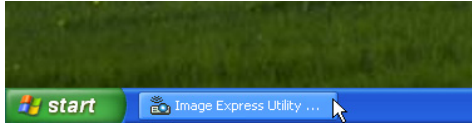
- To disclose a file to the participants, selection can be made only in folder units. Therefore, a folder only having files that can be disclosed to the participants must be created in advance.

- 1** Click the projector icon (  ) on the Windows taskbar.

A pop-up menu will be displayed.

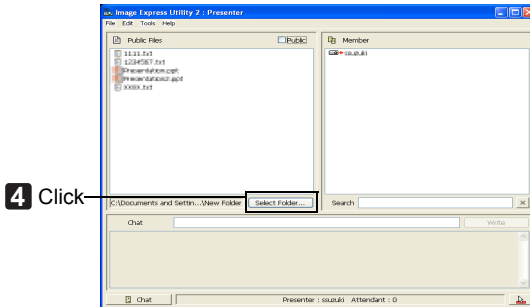


- 2 Click [Send To PC And Projector].
- 3 Click the [Image Express Utility 2.0] button on the taskbar.



The presenter window will be opened.

- 4 Click [Select Folder].



- 5 Select a folder saving the file to be disclosed to the participants, and click [OK].

The file in the selected folder will be displayed in the list of files to disclose.

- 6 Click the check box of [Public].

A check mark will be placed and the file will be shown to the participants.

#### Note

When the personal computer is connected to the projector, the personal computer screen that is in of being progress is also projected from the projector. To manipulate a screen that should not be shown (not projected), temporarily stop the transmission (▶ page 47).

## Ending conference

- 1 Click [File] in the presenter window, and click [Exit].

The "Saving Of File For Reopening Meeting" window will be displayed.

You can also end the conference by clicking [x] at the upper right of the presenter window.

- 2 Click [Exit].

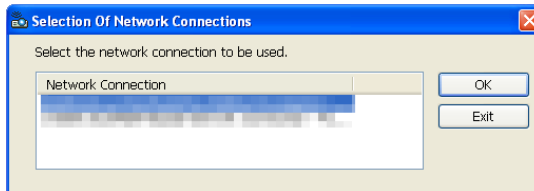
## 1-3. Participating in Conference

### ■ Participating in conferences

- 1 Click **Windows [Start] → [All Programs] → [NEC Projector User Supportware 2] → [Image Express Utility 2.0] → [Attendant], in that order.**

The "Selection Of Network Connections" window will be displayed.  
A list of the network equipment connected to your personal computer will be displayed.

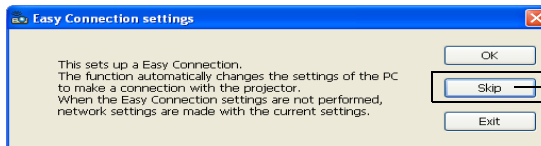
- 2 **Select the network equipment that is to be used and click [OK].**



If network equipment of wireless LAN is selected, the confirmation window of "Easy Connection settings" will be displayed.

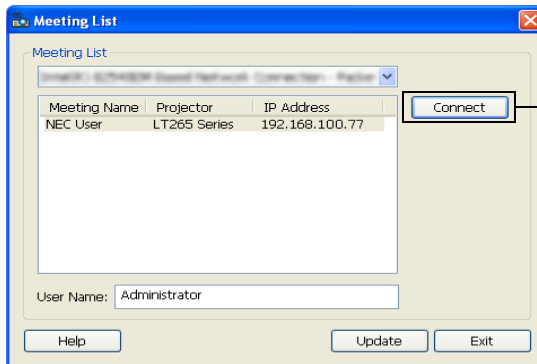
If wired LAN is selected, proceed to step **4**.

- 3 **Click [Skip].**




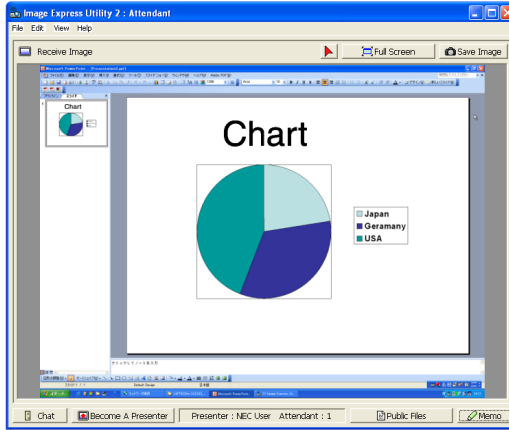
The "Meeting List" window will be displayed.

- 4 **Click the Meeting Name to participate, and click [Connect].**



The personal computer will be connected to the selected conference and the attendant window will be displayed.

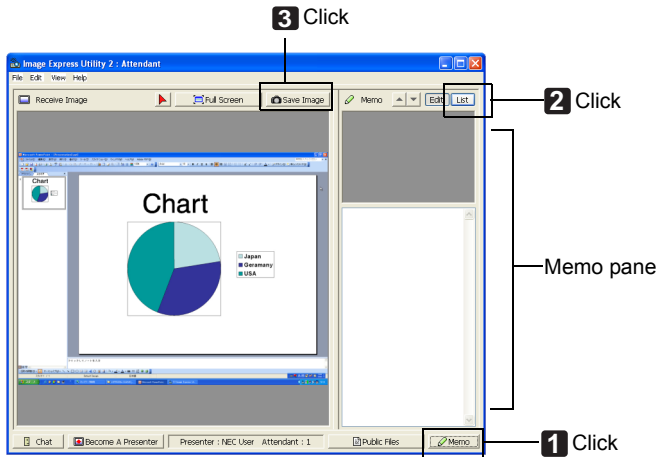
If the presenter selects "Send to PC And Projector" (  page 49), the image projected from the projector is displayed in the attendant window.



## ■ Saving received images

- 1 Click [Memo] in the attendant window.

A memo pane will be displayed.



- 2 Click [List] in the memo pane.

## 1. Image Express Utility 2.0

---

### 3 Click [Save Image] in the attendant window.

The image displayed in the attendant window will be saved.

- The saved image is added to the memo list and a thumbnail is displayed.
- A memo can be attached to the saved image.

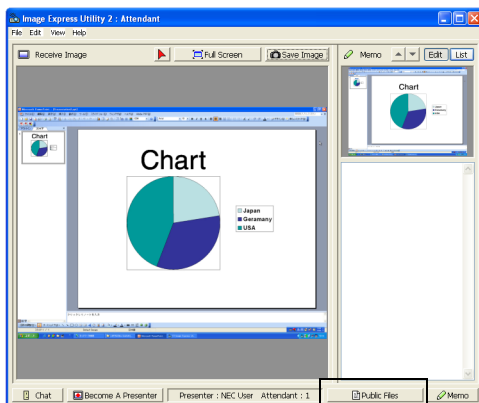
#### Reference

- By default, the image is saved to folder "My Documents\ImageExpress".
  - A folder is created below the default folder based on the time and date of the conference, and the image is saved to a file in the created folder.  
For example, if a conference was held at 11:20, July 10, 2004, the default folder name is "My Documents\ImageExpress\2004-07-10\_11-20\_Meeting Records". In this folder, an HTML file named "Meeting Records" is created.  
The saved image is saved in "Images" folder.
- 

## ■ Downloading disclosed file

### 1 Click [Public Files] in the attendant window.

The "Public Files" window will be opened.



1 Click

### 2 Select a file to download, and click [Download].

Downloading will begin.

The progress of the downloading is displayed at the lower left of the window.

### 3 When downloading is complete, click [File] in the "Public Files" window, and click [Close].

The "Public Files" window will be closed.

## Reference

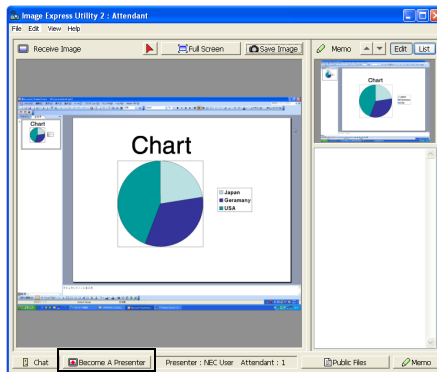
- If "Open After Downloading" is checked, the file is opened by specified Windows application software after downloading is complete.
- The default folder name for storing files is "My Documents\ImageExpress\".
- A folder is created below the default folder based on the time and day of the conference, and the file is saved to a file in the created folder.  
For example, if a conference was held at 11:20, July 10, 2004, the default folder name is "My Documents\ImageExpress\2004-07-10\_11-20\_Meeting Records\download".

## ■ Changing presenter

Three types of settings may be made to change the presenter: "Not Approved", "Approved", and "Changing Prohibited" (these can be selected only by the presenter). In the following example, "Not Approved" is selected.

### 1 Click [Become A Presenter] in the attendant window.

You will change from a participant to a presenter.



1 Click

## ■ Leaving conference

Leave the conference and exit Image Express Utility 2.0.

### 1 Click [File] in the attendant window, and click [Exit].

The "Saving Of File For Reopening Meeting" window will be displayed.

You can also leave the conference by clicking [×] at the upper right of the attendant window.

### 2 Click [Exit].

## 2. Desktop Control Utility 1.0

For the major functions of the Desktop Control Utility 1.0, refer to "1. What You Can Do with User Supportware 2" in the chapter "Preparation" (🕒 page 8).

### 2-1. Manipulating Desktop Screen by Using Projector

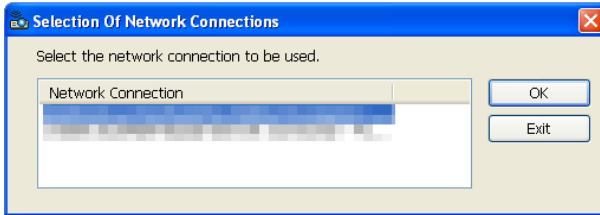
#### ■ Operation on personal computer

- 1 Click Windows [Start] → [All Programs] → [NEC Projector User Supportware 2] → [Desktop Control Utility 1.0] → [Desktop Control], in that order.

The "Selection Of Network Connections" window will be displayed.

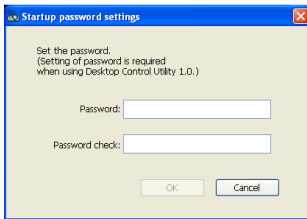
A list of the network equipment connected to your personal computer will be displayed.

- 2 Select the network equipment that is to be used and click [OK].

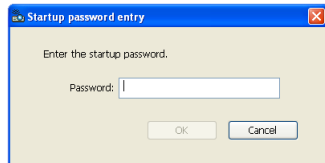


The "Startup password settings" window will be displayed.

Screen when Desktop Control Utility 1.0 is started first time



Screen if starting password has already been set



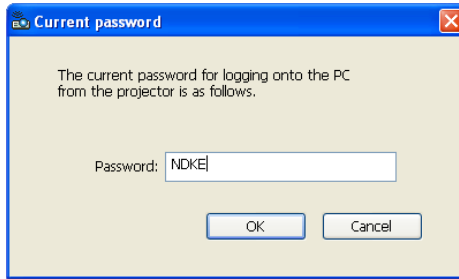
#### Important

- Be sure to write down the starting password in case you forget it.
- The starting password must be input each time Desktop Control Utility 1.0 is started.
- Should you forget the starting password, reinstall the Desktop Control Utility 1.0.



**3 Input the starting password of Desktop Control Utility 1.0, and click [OK].**

The "Current password" window will be displayed.

**Note**

The character string displayed in the password field varies each time Desktop Control Utility 1.0 is started.

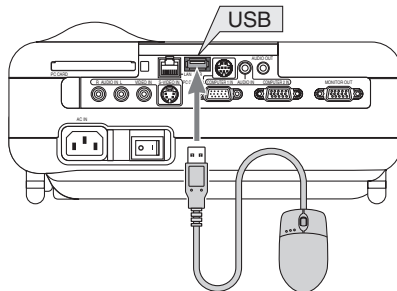
**4 Write down the character string displayed in the password field.**

Write down "NDKE" in the screen example of step **3**.

**5 Click [OK].**

Desktop Control Utility 1.0 will be started.

Move to the room where the projector is installed, with the paper on which you have written down the password in step **4**.

**Operating the projector (connecting personal computer)****1 Connect a USB mouse that is commercially available to the projector.****2 Turn on the power to the projector.**

Set the LAN setting of the projector in advance.

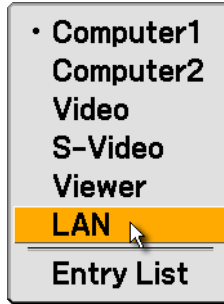
## 2. Desktop Control Utility 1.0

---

**3 Click the USB mouse.**

An on-screen menu will be displayed.

**4 Click "Source" and then "LAN".**



A message screen will be displayed.

This message is not displayed if a password for the Desktop Control is registered. If this message is not displayed, proceed to step **5**.

**5 Press the (MENU) button of the projector or remote control.**

The connection bar will be displayed at the lower left of the screen.



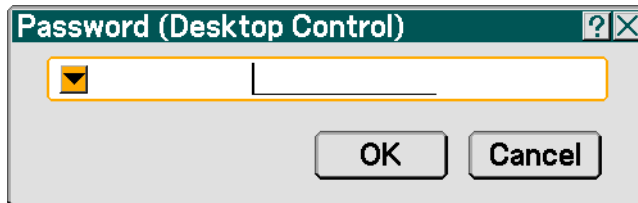
**6 Click  (password input icon).**

The "Password (Desktop Control)" screen will be displayed.



**7 Click "Entry".**

A password input screen will be displayed.



**8** Click "▼".

The software keyboard will be displayed.



**9** Input the password you have written down in step 4 of "n Operation on personal computer".

Items other than the characters in the software keyboard have the following functions.

"BS".....Deletes one character to the left of the character insertion position in the "Password" field.

"◀" "▶".....Moves the character insertion position in the "Password" field to the left or the right.

[OK].....Finalizes the input character and closes the software keyboard.

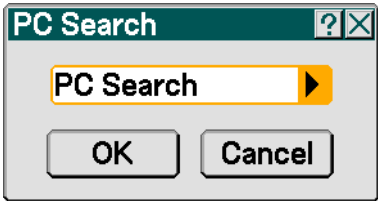
[Cancel].....Cancels the input character and closes the software keyboard.

**10** After inputting the password, click [OK] on the password input screen.

The password input screen will be closed.

**11** Click  (PC search icon).

The "PC Search" screen will be displayed.



### 12 Click [OK].

A connection destination selection screen will be displayed.

If the connection destination has not been found as a result of a PC search, search for the connection destination by inputting the IP address of the personal computer at the connection destination, click "▶" on the "PC Search" screen, and click "Input IP Address" and [OK].

### 13 Click the personal computer at the connection destination and then [OK].

The desktop screen of the personal computer at the connection destination will be displayed.



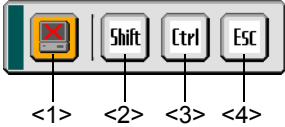
#### Note





When the desktop screen is displayed, the on-screen menu is not displayed even if the USB mouse is clicked. To display the on-screen menu while the desktop screen is displayed, press the (MENU) button of the projector or remote control twice.

## ■ Operating the projector (manipulating desktop screen)

The displayed desktop screen can be manipulated by using the USB mouse connected to the projector. If the (MENU) button of the projector or remote control is pressed while the desktop screen is displayed, an auxiliary operation bar is displayed at the lower left of the screen.

Manipulate the auxiliary operation bar by using the buttons of the projector or remote control.



- <1>  (cut-off icon) ..... Disconnects communication with the personal computer.
- <2>  (Shift icon) ..... When the highlight is moved to this icon and the **ENTER** button is pressed, shift lock status is set. The shift lock is canceled if the highlight is moved to this icon and the **ENTER** button is pressed again.
- <3>  (Ctrl icon) ..... When the highlight is moved to this icon and the **ENTER** button is pressed, control lock status is set. The control lock is canceled if the highlight is moved to this icon and the **ENTER** button is pressed again.
- <4>  (ESC icon) ..... The same operation as when the [ESC] key of the personal computer is pressed is performed. This icon is used, for example, to stop a slideshow of PowerPoint.

Operation

Desktop Control Utility 1.0

### ■ Operating the projector (disconnecting communications)


- 1** Press the **MENU** button while the desktop screen is displayed.

An auxiliary operation bar will be displayed at the lower left of the screen.



- 2** Move the highlight to  (cut-off icon) and press the **ENTER** button.

Communication will be disconnected and a connection bar will be displayed at the lower left of the screen.


To resume communication, click  (PC search icon).

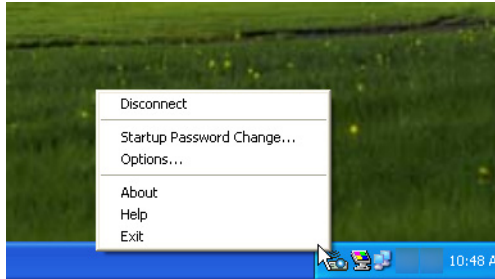
After that, follow steps **12** and **13** on the preceding page.

Reference

Communication can also be disconnected by clicking the projector icon on the taskbar and then clicking "Disconnect" while the desktop screen is displayed.

## ■ Operating the projector (exiting Desktop Control Utility 1.0)

- 1** Click the projector icon [  ] on the taskbar while the desktop screen is displayed.



- 2** Click [Exit].  
Desktop Control Utility 1.0 will be terminated.
- 3** Click the USB mouse.  
A connection bar will be displayed at the lower left of the screen.
- 4** Click the USB mouse once again.  
The on-screen menu will be displayed.
- 5** Click "Source" and click an input source other than "LAN".  
The on-screen menu will be closed.

## 3. Ulead Photo Explorer 8.0 SE Basic

For major functions of Ulead Photo Explorer 8.0 SE Basic (hereafter referred to as "Ulead Photo Explorer 8.0"), refer to "1. What You Can Do with User Supportware 2" in the chapter "Preparation" (page 9).

With Ulead Photo Explorer 8.0, your personal computer and the projector can be connected with LAN or a serial cable.

This section explains how to connect the personal computer and projector with LAN.

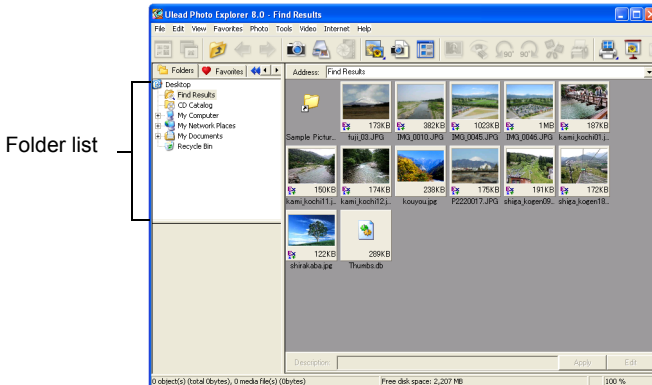
### 3-1. Sending Slideshow of Image to Projector

#### ■ Move an image to the slideshow story board.

- 1 Click Windows [Start] → [All Programs] → [Ulead Photo Explorer 8.0 SE Basic] → [Ulead Photo Explorer 8.0 SE Basic], in that order.

Ulead Photo Explorer 8.0 will be started.

- 2 Display the thumbnail of the needed image by manipulating the folder list.

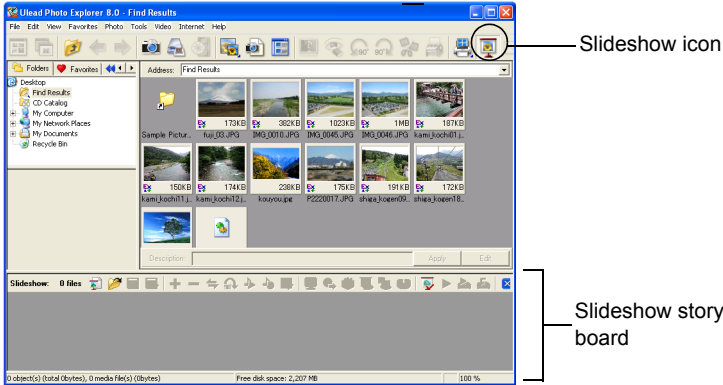


### 3. Ulead Photo Explorer 8.0 SE Basic

**3** Click  (slideshow icon).

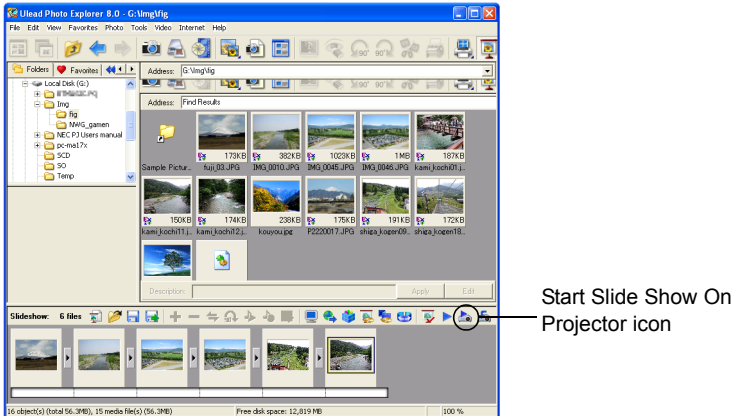
The slideshow story board will be displayed.

- The slideshow story board can also be displayed by selecting "Slideshow" from the "Tools" menu.



**4** Drag and drop the image to project it from the projector to the slideshow story board.

**5** By repeating step **4**, display all the images that are to be projected on the slideshow story board.



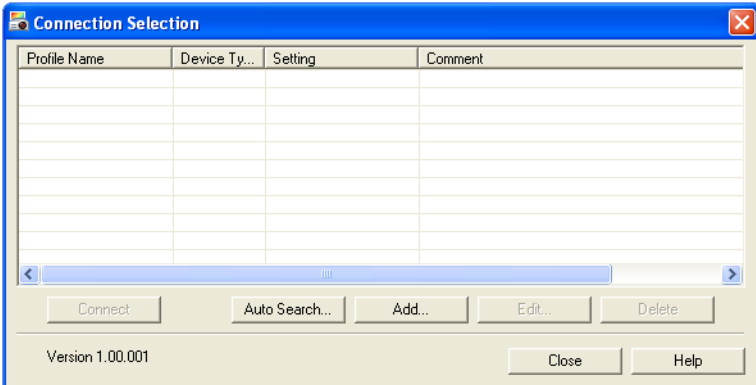


## ■ Select projector transmission destination (start slide show).

- 1 Click [  ] (Start Slide Show On Projector icon).  
Or, click [NEC Projector User Supportware 2] on the [Tools] menu, and click [Start Slide Show].

The "Connection Selection" window will be displayed.

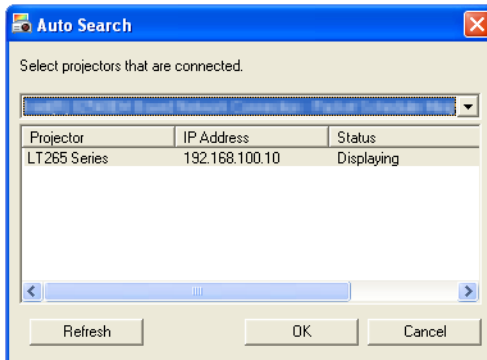
If your personal computer has already been connected to the projector, proceed to step **4**.



- 2 Click [Auto Search].

The "Auto Search" window will be displayed.

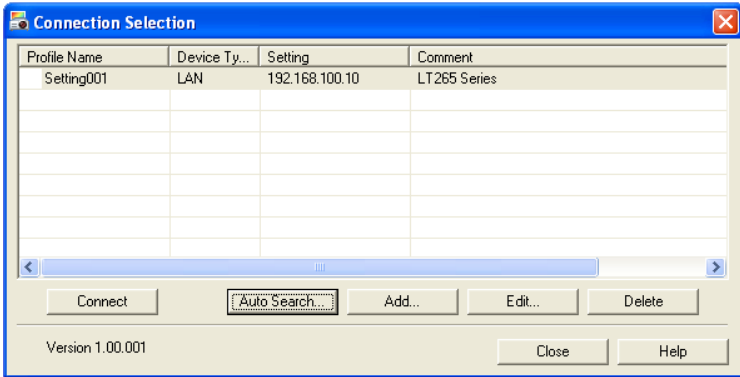
This window is for the projector connected to your personal computer with LAN.



### 3. Ulead Photo Explorer 8.0 SE Basic

- 3** Select a projector to which the slideshow is to be sent, and click [OK].

The "Connection Selection" window will be displayed again.



- 4** Select a projector to which the slideshow is to be sent, and click [Connect].

The slideshow will be sent to the projector and projected from the projector.

While the slideshow is being transferred, the operation window is displayed.



When the slideshow is completed, the following confirmation window is displayed.



- 5** Click [OK].

The slideshow has been completed.

## ■ Saving slideshow and exiting Ulead Photo Explorer 8.0

- 1** Click [X] at the upper right of the Ulead Photo Explorer 8.0 window.

A window for confirming saving will be displayed.

- 2** Click [Yes].

After that, save the slideshow file, following the messages on the screen.

After the slideshow file has been saved, Ulead Photo Explorer 8.0 is terminated.

## 4. Viewer PPT Converter 3.0

For the major functions of Viewer PPT Converter 3.0, refer to "1. What You Can Do with User Supportware 2" in the chapter "Preparation" (▶ page 10).

### 4-1. Converting PowerPoint file and displaying it with viewer function of projector

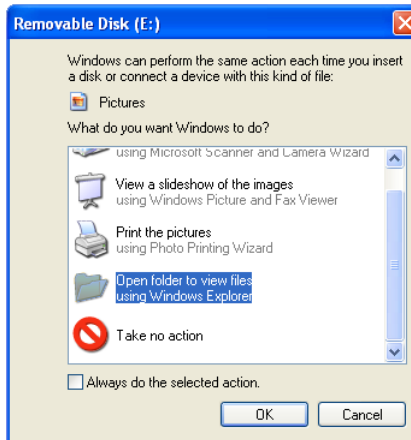
#### ■ Converting a PowerPoint file and saving it to a flash memory card

Reference

To send data from the personal computer to the projector, USB memory, as well as flash memory card, can be used.

#### 1 Set the flash memory card to the PC card slot of your personal computer.

If an operation selection window for the flash memory card that has been set is displayed, select an appropriate item and click [OK].

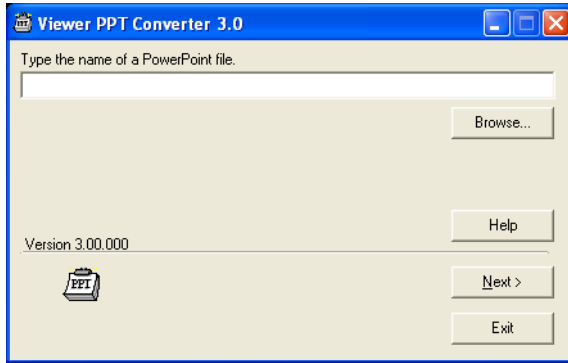


## 4. Viewer PPT Converter 3.0

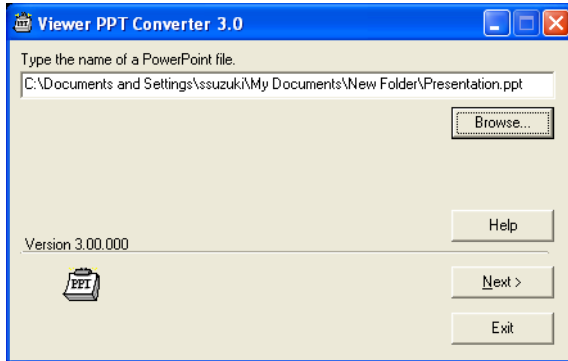
---

- 2 Click **Windows [Start] → [All Programs] → [NEC Projector User Supportware 2] → [Viewer PPT Converter 3.0] → [Viewer PPT Converter 3.0]**, in that order.

Viewer PPT Converter 3.0 will be started.



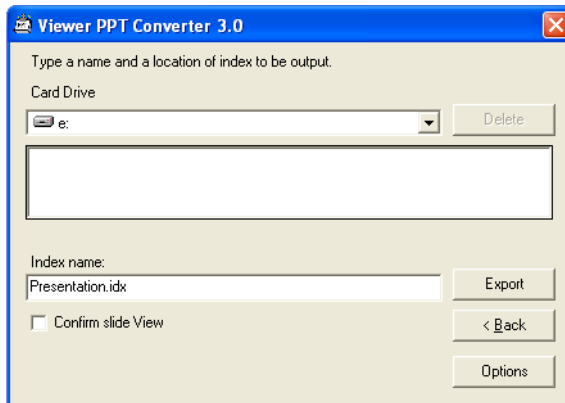
- 3 Click **[Browse]**, select a PowerPoint file to be converted, and click **[Open]**.



- 4 Click **[Next]**.

**5 Select [Card Drive] and input [Index name].**

Specify an index name using up to eight 1-byte alphanumeric characters. A long file name exceeding eight characters must not be specified.

**6 Click [Export].**

A confirmation message will be displayed.

**7 Click [OK].**

Outputting of the file will start.

When outputting has been completed, a completion message is displayed.

**8 Click [OK].**

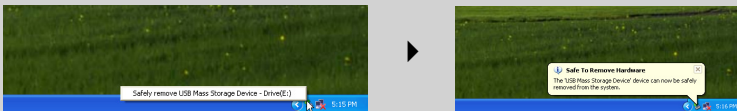
The "Viewer PPT Converter 3.0" window will be displayed again.

**9 Click [Exit].**

Viewer PPT Converter 3.0 will be terminated.

**10 Remove the flash memory card from the personal computer.****Note**

To remove the flash memory card from the PC card slot of the personal computer, click the "Safe Removal of Hardware" icon on the taskbar.



## ■ Projecting image by using viewer function of projector

- 1 Turn on the power to the projector.**
- 2 Set the flash memory card to which the converted PowerPoint file has been output to the projector (◀ page 23).**

### Note

If the wireless LAN card has already been set to the projector, turn off the power to the projector once, and remove the wireless LAN card. Then set the flash memory card to the projector, and turn on the power to the projector.

- 3 Press the **VIEWER** button of the remote control.**

The input source of the projector will change to "Viewer" and the image output to the flash memory card will be projected.

- To use the button of the projector, press the **SOURCE** button and select "Viewer".
- For the operation of the "Viewer", refer to the User's Manual (in User's Manual CD-ROM).
- To end the "Viewer", select another input signal by pressing the **COMPUTER 1** button of the remote control.

- 4 When the viewer ends, remove the flash memory card from the projector (▶ page 24).**

### Note

Do not remove the flash memory card while the PC card access indicator lights. Otherwise, the flash memory card may be damaged.

## 5. PC Control Utility 3.0

For the major functions of PC Control Utility 3.0, refer to "1. What You Can Do with User Supportware 2" in the chapter "Preparation" (▶ page 10).

With PC Control Utility 3.0, your personal computer and the projector can be connected with LAN or a serial cable.

This section explains how to connect the personal computer and projector with LAN.

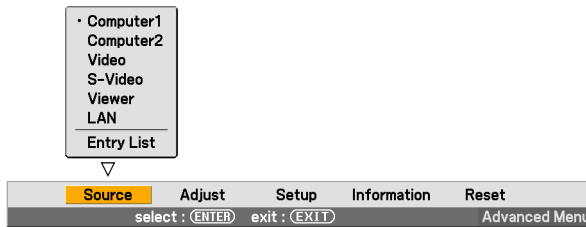
### 5-1. Controlling Projector from Personal Computer

#### ■ Checking IP address of projector

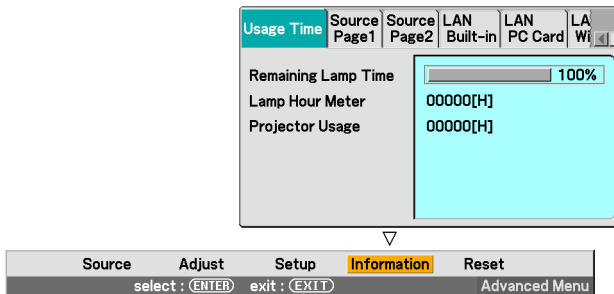
First, confirm the IP address of the projector to be controlled. Set that IP address to PC Control Utility 3.0, and connect the projector.

- 1 Turn on the power to the projector.
- 2 Press the **(MENU)** button of the projector.

The on-screen menu will be displayed.



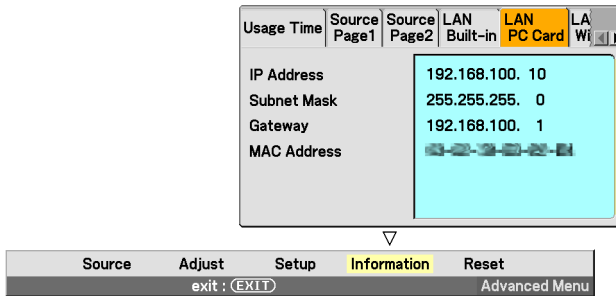
- 3 Use the **(SELECT ▶)** button to select the Information submenu.



- 4 Press the **(ENTER)** button.

## 5. PC Control Utility 3.0

- 5** Press the **(SELECT)** button four times to highlight the "LAN PC Card" tab.  
If the wired LAN is used, select the "LAN Built-in" tab.



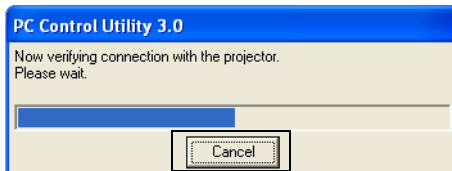
- 6** Write down the IP address displayed on the screen.  
In this example, the IP address is "192.168.100.10".
- 7** Press the **(EXIT)** button twice.  
The on-screen menu will be closed.

## ■ Connecting projector

- 1** Click **Windows [Start] → [All Programs] → [NEC Projector User Supportware 2] → [PC Control Utility 3.0] → [PC Control Utility 3.0]**, in that order.

PC Control Utility 3.0 will be started and a window confirming connection with the project will be displayed.

If the personal computer has been previously connected to a projector, the window for connecting the projector is closed and then the tool bar is displayed (▶ page 72).

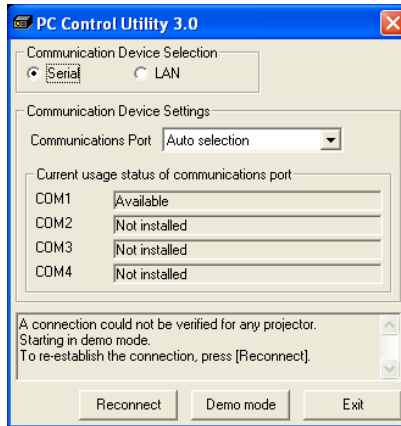


- 2** Click

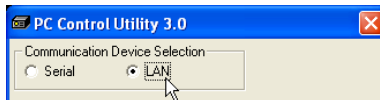
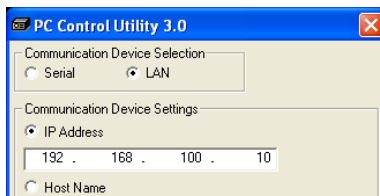


**2 Click [Cancel].**

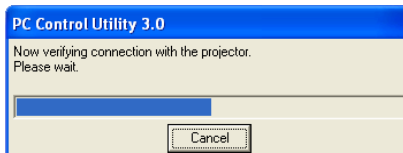
The setting screen will be displayed.

**3 Click [LAN].**

The setting screen for LAN connection will be displayed.

**4 Input the IP address of the projector you have written down to the [IP Address] in the "Information" screen.****5 Click [Reconnect].**

Connection with the projector will start.

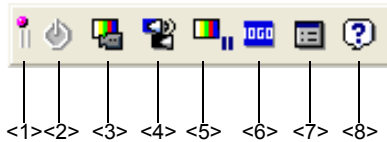


When the projector has been connected, the tool bar is displayed.



## ■ Controlling projector

Control the projector by using the tool bar.

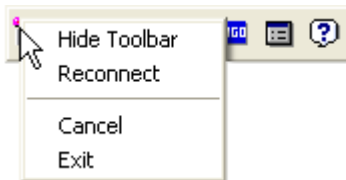


- <1> System button ..... Displays a submenu for "Hide tool bar", "Reconnect", "Cancel", and "Exit".
- <2> Power button..... Each time this button is clicked, power is turned on and off.
- <3> Source select button..... Each time this button is clicked, Computer 1 → Computer 2 → Video → S-Video → Viewer → LAN is selected.
- <4> Mute button ..... When this button is clicked, the video and audio are temporarily muted. Clicking it once again restores the original condition.
- <5> Freeze button ..... Clicking this button makes motion pictures still.
- <6> Logo Transfer button ..... Transfers edited image data to the logo screen of the projector.
- <7> Option button ..... Sets options.
- <8> Help button ..... Displays the help for PC Control Utility 3.0.

## ■ Exiting PC Control Utility 3.0

### 1 Click the system button on the tool bar.

The submenu will be displayed.



### 2 Click [Exit].

PC Control Utility 3.0 will be terminated.

# Appendix

This Appendix explains how to execute troubleshooting, and how to get information about downloading service.

---

Troubleshooting .....	74
About the Downloading Service.....	78
For Information .....	78

# Troubleshooting

Also refer to the description of troubleshooting in the help function of each software program.

\* The software names are abbreviated as follows in this Appendix.

- Image Express Utility 2.0 ..... IEU2.0
- Desktop Control Utility 1.0 ..... DCU1.0
- Ulead Photo Explorer 8.0..... PEX8.0
- Viewer PPT Converter 3.0 ..... PPTC3.0
- PC Control Utility 3.0 ..... PCON3.0

## ■ Installation is not completed correctly. (IEU2.0/DCU1.0/PEX8.0/PPTC3.0/PCON3.0)

Check

- Did you log on with the "Administrators" privilege (when Windows 2000 is used)?
- Did you log on with the "Computer Administrator" privilege (when Windows XP is used)?

Action

Log on with the above privileges to Windows 2000 or Windows XP and install the program.

## ■ Installation is not completed correctly (PPTC3.0).

Check

**Is PowerPoint installed in the personal computer to which Viewer PPT Converter 3.0 is to be installed?**

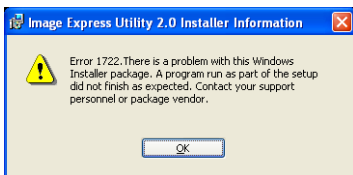
If Viewer PPT Converter 3.0 is installed in a personal computer to which PowerPoint is not installed, the following message is displayed in the middle of installation.  
"Error 1904. There was an error in registering the Add-In function. Please check that Microsoft PowerPoint 2000 or later is installed and start over from the installation."

Action

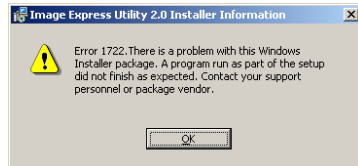
Confirm that PowerPoint 2000 or later is installed to your personal computer, and reinstall Viewer PPT Converter 3.0.

## ■ The following screen is displayed while installing (IEU2.0/DCU1.0).

Windows XP



Windows 2000



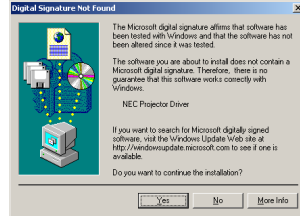
Check

If [STOP Installation] (Windows XP) or [No] (Windows 2000) is clicked on the following screen while the installation of Image Express Utility 2.0 or Desktop Control Utility 1.0 in progress.

**Windows XP**



**Windows 2000**



Action

Select Windows [Control Panel] → [Add or Remove Programs], and remove (uninstall) the software whose installation has been stopped. Then reinstall the software.

■ **To cancel the add-in function of PowerPoint (PPTC3.0)**

Check

Add-in to PowerPoint is automatically registered if Viewer PPT Converter 3.0 is installed to a personal computer to which PowerPoint 2000/2002/2003 is installed.

Action

For how to cancel the add-in function of PowerPoint, refer to the help function of Viewer PPT Converter 3.0. Be sure to cancel the add-in function of PowerPoint before uninstalling Viewer PPT Converter 3.0.

■ **No image can be projected onto the screen by using LAN environment (IEU2.0/DCU1.0).**

Check

Image Express Utility 2.0 and Desktop Control Utility 1.0 do not support the following.

- (1) Software using DirectX.
- (2) A Video screen may not be sent if video playback software is started first or if in an ordinary personal computer environment.

Action

\_\_\_\_\_

Check

- **Isn't the personal firewall function used on your personal computer?**
- **Is Windows XP Service Pack 2 (SP2) installed?**  
**If Windows XP Service Pack 2 (SP2) is installed, the setting of the firewall is enabled.**

Action

To use this software on a personal computer where the personal firewall function is used, setting of the personal firewall function may be necessary. If the personal computer cannot communicate correctly with the projector, change the setting of the personal firewall function.  
For how to set the personal firewall function, refer to the User's Manual of the software, or consult the software developer.

## ■ **Colors are not displayed correctly if the number for colors of Windows is 256 or fewer colors (IEU2.0/DCU1.0).**

Check

**Image Express Utility 2.0 and Desktop Control Utility 1.0 do not support 256 or fewer colors.**

Action

Set the number of colors of Windows to High Color (15 bits) or more. Depending on the application software, the number of colors changes when the full screen is displayed.

## ■ **It takes time to send images from the personal computer to the projector (IEU2.0).**

Check

- **Depending on the image, it takes time to send.**
- **To send images to two or more projectors at the same time, the transmission time increases as the number of projectors increases.**
- **The transmission time may vary depending on the network environment.**
- **The transmission time may vary depending on the performance of the personal computer and on the other application software running at the same time.**

Action

\_\_\_\_\_

Check

**If the resolution of the personal computer is different from that of the projector, the transmission time increases because the resolution must be converted.**

Action

It is recommended to set resolution for both the personal computer and projector as the same.  
To send images to the LT265/LT245, set the resolution of the personal computer to 1024 × 768 dots.

■ **The image projected from the projector is different from the screen of the personal computer (IEU2.0/DCU1.0).**

Check

Depending on the personal computer and application software, some of the screen's graphics and characters may not be sent to the projector.

Action

\_\_\_\_\_

■ **The slideshow screen of PowerPoint cannot be selected (IEU2.0/DCU1.0).**

Check

If Image Express Utility 2.0 or Desktop Control Utility 1.0 is started while PowerPoint is running, the slideshow screen cannot be selected.

Action

Exit PowerPoint once and then restart it.

■ **The screen of the personal computer on the sender side is distorted or the colors are strange (IEU2.0/DCU1.0).**

Check

Some application software automatically changes the resolution and the number of colors. Such application software is not supported.

Action

\_\_\_\_\_

## About the Downloading Service

For update information on NEC Projector User Supportware 2 (Image Express Utility 2.0, Desktop Control Utility 1.0, Viewer PPT Converter 3.0, and PC Control Utility 3.0) refer to the NEC Projector's support page (<http://www.nec-pj.com>).

## For Information

■ **Ulead Photo Explorer 8.0**

Visit: <http://www.ulead.com/pex>

■ **Other software**

- Image Express Utility 2.0
- Desktop Control Utility 1.0
- Viewer PPT Converter 3.0
- PC Control Utility 3.0

Visit: <http://www.nec-pj.com>



- IBM and PC/AT are registered trademarks of International Business Machines Corporation.
- Microsoft, Windows, PowerPoint, MS, MS-DOS, and DirectX are registered trademarks or trademarks of Microsoft Corporation in the U.S. or other countries.
- Ulead Systems and Photo Explorer are registered trademarks of Ulead Systems, Inc.
- Other manufacturer names and product names in this document are registered trademarks or trademarks of the respective companies.

# **NEC Projector User Supportware 2**

- **Image Express Utility 2.0**
- **Desktop Control Utility 1.0**
- **Ulead Photo Explorer 8.0 SE Basic**
- **Viewer PPT Converter 3.0**
- **PC Control Utility 3.0**