

# **Operation Guide**

## **for the MultiPresenter Stick**

**DS1-MP10RX series**

(Compatible with Ver. 1.01)



To ensure safe use of the MultiPresenter Stick, be sure to read the included Important Information before using the stick.

# Introduction

We greatly appreciate your purchase of this MultiPresenter Stick.

This guide provides detailed explanations of the procedure for operating the MultiPresenter Stick. Before using the MultiPresenter Stick, be sure to read the included "Important Information".

## ► **NOTE**

The explanations in this guide are based on the functions of MultiPresenter Stick firmware version "1.01". For this reason, the functions may differ depending on the version of the firmware of the MultiPresenter Stick you are using.

The MultiPresenter Stick has a firmware version update function. The firmware version can be updated once the initial settings for the MultiPresenter Stick are made with the current firmware version.

## ► **IMPORTANT**

A commercially available wired network adapter (a product verified by NEC) must be purchased in order to connect the MultiPresenter Stick to a wired LAN. For details, refer to the NEC website.

<http://www.nec-display.com/global/support/solution/mp10rx.html>

## About trademarks

- MultiPresenter is a trademark or registered trademark of NEC Display Solutions, Ltd. in Japan and other countries.
- The terms HDMI and HDMI High-Definition Multimedia Interface, and the HDMI Logo are trademarks or registered trademarks of HDMI Licensing Administrator, Inc. in the United States and other countries.
- Windows, Internet Explorer and Microsoft Edge are registered trademarks or trademarks of the Microsoft Corporation of the United States, in the United States and other countries.
- Google, Google Play, Android and Chrome are registered trademarks or trademarks of Google Inc.
- OS X and Safari are trademarks of Apple Inc., registered in the United States and other countries.
- iOS is a trademark or registered trademark of Cisco in the United States and other countries, and is used under license.
- App Store is a service mark of Apple Inc.
- Wi-Fi, WPA and WPA2 are registered trademarks of the Wi-Fi Alliance.
- Other names of corporations and products are trademarks or registered trademarks of said corporations.

# Contents

<b>1. What can be done with the MultiPresenter Stick</b>	<b>4</b>
<b>2. Packaged Items</b>	<b>6</b>
<b>3. Names of parts</b>	<b>7</b>
<b>4. Basic operation (from connecting to devices to displaying images)</b>	<b>8</b>
4-1. Connecting the MultiPresenter Stick to an image display device and turning on the power	8
4-2. Making the MultiPresenter Stick's initial settings	9
4-2-1. Making the initial settings using a computer or smartphone	10
4-2-2. Making the initial settings using a commercially available USB mouse	12
4-3. Preparing the MultiPresenter application	12
4-3-1. Using a computer (Windows or OS X)	12
4-3-2. Using an Android device or an iOS device	12
4-4. Connecting the MultiPresenter application to the MultiPresenter Stick and displaying images	13
4-4-1. Using a computer (Windows or OS X)	13
4-4-2. Using an Android device or an iOS device	13
<b>5. Web server functions</b>	<b>16</b>
5-1. Connecting computers or smartphones to the MultiPresenter Stick's web server	16
5-1-1. Using a computer	16
5-1-2. Using a smartphone	17
5-2. Using a web browser to transfer files between devices (web sharing)	19
5-3. Controlling the number of panels or moderator, in the MultiPresenter Managed mode (MultiPresenter)	21
5-3-1. Switching from the Free mode to the Managed mode	21
5-3-2. Displaying the MultiPresenter screen	22
5-3-3. Changing the number of panels on the screen	22
5-3-4. Changing the order of the images on the screen	23
5-4. Using a web browser to change the MultiPresenter Stick's settings (SETTINGS tab)	24
5-4-1. Normal menu	24
5-4-2. Moderator menu	25
5-4-3. Administrator menu	26
<b>6. Setting the method of connecting to a wireless or wired LAN</b>	<b>28</b>
6-1. Wireless LAN settings	28
6-1-1. INTELLIGENT CONNECTION setting items	28
6-1-2. INFRASTRUCTURE setting items	29
6-1-3. SIMPLE ACCESS POINT setting items	29
6-2. Wired LAN settings	30
<b>7. Displaying the MultiPresenter Stick's settings menu</b>	<b>31</b>
<b>8. Appendix</b>	<b>32</b>
8-1. Troubleshooting	32
8-2. Frequently asked questions	34
8-3. Updating the firmware version	36
Index	38

## ► ADDITIONAL EXPLANATIONS

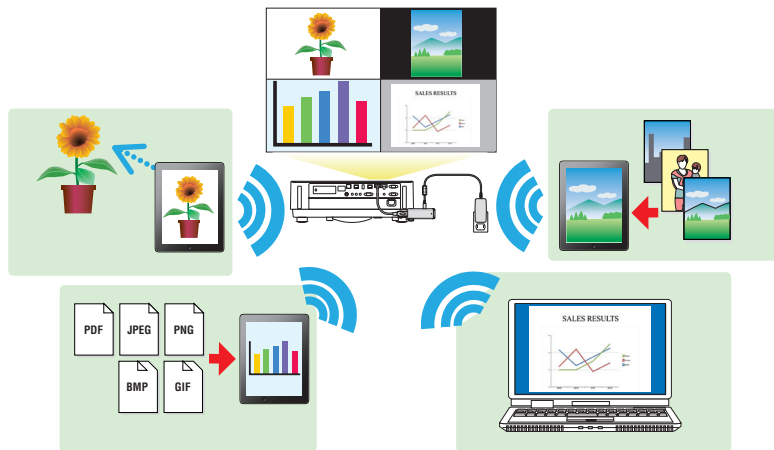
About the "INTELLIGENT CONNECTION" and "INFRASTRUCTURE" functions	9
Connecting to multiple MultiPresenter Sticks	15
Using the MultiPresenter application to display the web server screen	18
About the MultiPresenter "Free mode" and "Managed mode"	21

# 1. What can be done with the MultiPresenter Stick

## Wireless display of images

When the MultiPresenter Stick is connected to the HDMI input port of an NEC display or projector, images on a computer or smartphone can be sent to the MultiPresenter Stick by wireless LAN and displayed on a display or projected from a projector. The MultiPresenter Stick includes a built-in wireless LAN function.

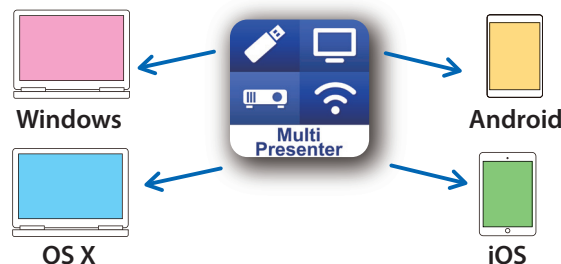
In addition, when a commercially available wired network adapter whose operation has been verified by NEC is used, the MultiPresenter Stick can be connected to a wired LAN as well.



## Exclusive application compatible with multiple OSs

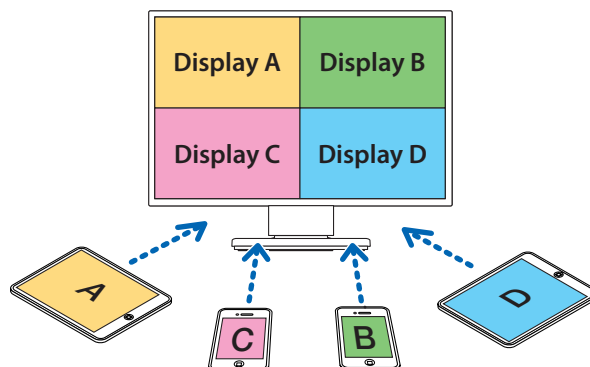
The MultiPresenter application is used to send images from a computer or smartphone to the MultiPresenter Stick. The MultiPresenter application is compatible with multiple OSs (Windows, OS X, Android and iOS). In addition, various applications and their user's manuals can be downloaded from the NEC website.

<http://www.nec-display.com/dl/en/soft/multipresenter/index.html>



## Simultaneous display of the images of multiple devices

The images on multiple computers or smartphones can split and displayed simultaneously in up to 16 panels (4 vertical × 4 horizontal panels). (NOTE: When using the INTELLIGENT CONNECTION function, up to 12 units can be connected.)



## Simple connection by PIN code (4-digit number)

The unique INTELLIGENT CONNECTION function allows connection simply by inputting a PIN code (4-digit number), eliminating the need for wireless LAN connection operations. Furthermore, in addition to the INTELLIGENT CONNECTION function, it is also possible to connect to existing networks (Infrastructure function).



## WEB server functions

You can use your device's web browser to connect to the MultiPresenter Stick's web server and use the three functions below, with no need to use special file sharing software.

The web server functions are supported by the web browsers shown below.

For Windows	<ul style="list-style-type: none"><li>Internet Explorer 11</li><li>Latest version of Microsoft Edge</li><li>Latest version of Google Chrome</li></ul>	For OS X	<ul style="list-style-type: none"><li>Safari 6 or later</li></ul>
		For iOS	<ul style="list-style-type: none"><li>Latest version of Safari</li></ul>
		For Android	<ul style="list-style-type: none"><li>Latest version of Google Chrome</li></ul>

### (1) Web sharing

#### ● Screen sharing

The pictures displayed on the image display devices connected to the MultiPresenter Stick can be displayed and shared on the web browser screens of the different participant's devices.

#### ● File sharing

Files on computers or smartphones can be uploaded to the web server and files on the web server can be downloaded and stored on computers or smartphones. The files that have been uploaded to the web server are automatically deleted when the session is closed. (By default)



### (2) MultiPresenter Managed mode

MultiPresenter has two modes: "Free" and "Managed". The mode is set to "Free" upon shipment from the factory.

In the Free mode, when images are sent to the MultiPresenter Stick from multiple computers or smartphones, the images received by the MultiPresenter Stick are automatically split into panels for display (up to 16 panels).

In the Managed mode, control of the images from the different devices is disabled, and the number of panels and order of display of the images is controlled by the web browser.

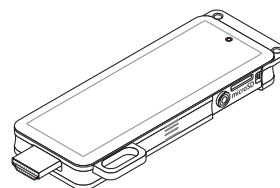
### (3) Settings

A web browser can be used to download the MultiPresenter application (for Windows or OS X) from the MultiPresenter Stick and to change the various MultiPresenter Stick settings.

## 2. Packaged Items

Check that all the packaged items are present.

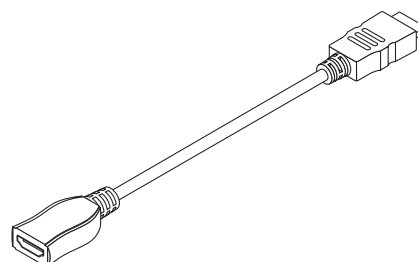
MultiPresenter Stick 1 pc



HDMI extension cable 1 pc

### NOTE

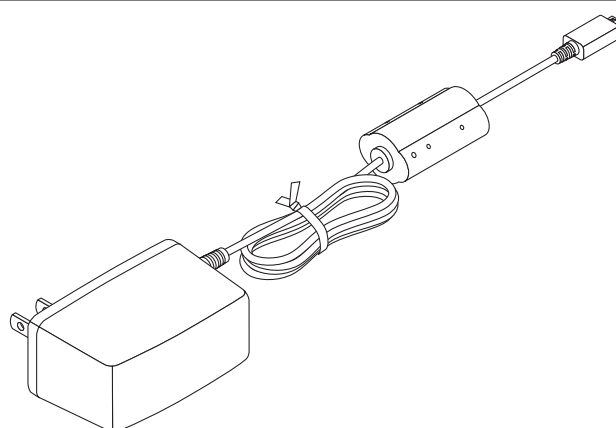
The packaged HDMI extension cable is exclusive use for the MultiPresenter Stick. Do not use it able for other products.



AC adapter 1 pc

### NOTE

The AC adapter is exclusive use for the MultiPresenter Stick. Do not use it able for other products.

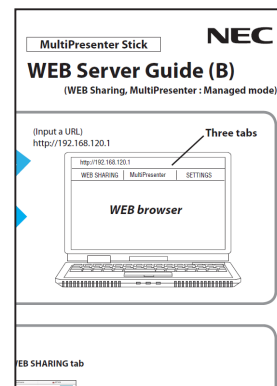
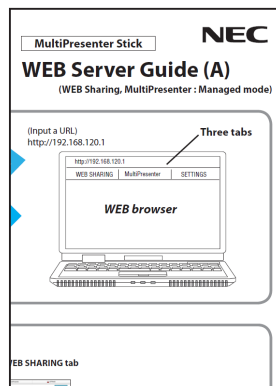
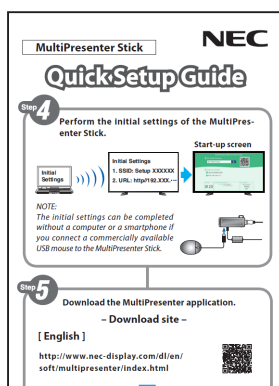
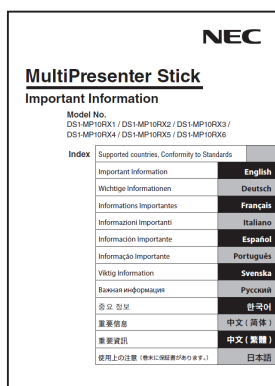


Important Information 1 copy

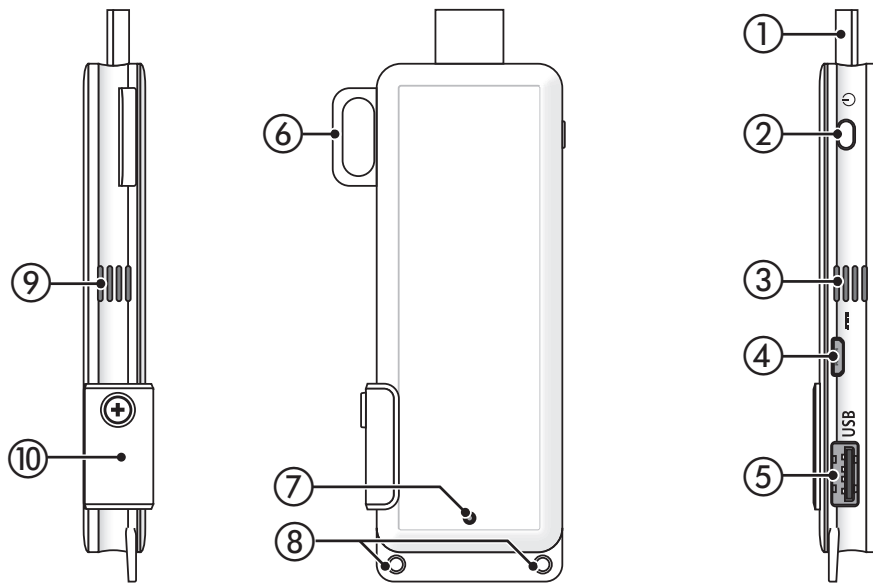
Quick Setup Guide 1 copy

WEB Server Guide (A) 1 copy

WEB Server Guide (B) 1 copy



### 3. Names of parts



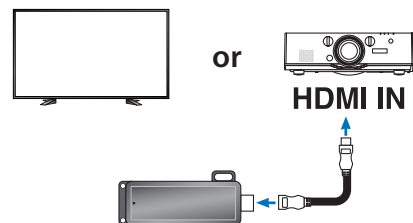
① HDMI output port	Use the included HDMI extension cable to connect to the HDMI input port on a display or projector.
② Power button	This turns the power on and off. To turn the power off, press and hold the button (for about 5 seconds).
③ ⑨ Exhaust vents	These discharge the heat inside the frame. NOTE: Do not block the exhaust vents.
④ DC IN jack	Connect the included AC adapter here. NOTE: When connecting the AC adapter to the MultiPresenter Stick, check the direction of the jack.
⑤ USB port	A USB mouse (commercially available) can be connected here to make the settings of the MultiPresenter Stick. A wired network adapter (commercially available) can also be connected here.
⑥ Security hanger	Install a commercially available theft prevention wire here.
⑦ Power indicator	This indicates the power status. When power is on: Lit blue When power is off: Off
⑧ Strap holes	To fix the MultiPresenter Stick in place, put a commercially available strap, etc., through these holes. NOTE: Do not use conductive wires. Doing so may decrease the wireless LAN sensitivity.
⑩ microSD card slot	* This slot cannot be used. Do not remove the cover.

## 4. Basic operation (from connecting to devices to displaying images)

### 4-1. Connecting the MultiPresenter Stick to an image display device and turning on the power

#### Step 1

1. Connect the included HDMI extension cable to the MultiPresenter Stick.
2. Connect the other end of the HDMI extension cable to the HDMI input port on a display or projector.

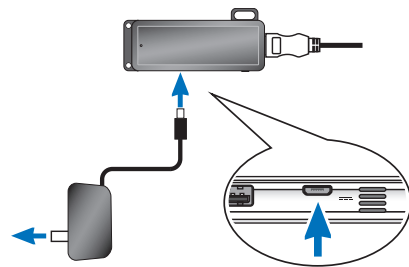


#### Step 2

3. Turn on the power of the display or projector.

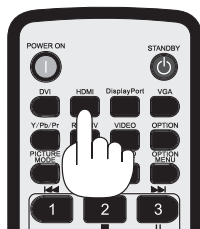
#### Step 3

4. Connect the included AC adapter to the MultiPresenter Stick.
5. Connect the AC adapter to a power outlet.



#### Step 4

6. Press the "HDMI" button on the remote control of the display or projector. The MultiPresenter Stick's initial settings screen is displayed.
  - The SSID and URL are displayed on the screen. The SSID indicates the identifier of the wireless LAN's access point.



This is the MultiPresenter Stick's initial settings screen.

#### NOTE

- Be sure to use the included HDMI extension cable to connect the MultiPresenter Stick to the display or projector.
- Check that the power of the display or projector is off when connecting the HDMI extension cable.
- Do not connect or disconnect the HDMI extension cable while the MultiPresenter Stick's power is on. The images may not be displayed properly.



## 4-2. Making the MultiPresenter Stick's initial settings

The MultiPresenter Stick's initial settings can be made in two ways: by using a computer or smartphone and by connecting a commercially available USB mouse.

When making the initial settings using a computer or smartphone, the wireless LAN connection can be made with either the "INTELLIGENT CONNECTION" or the "INFRASTRUCTURE" function. If the initial settings were completed with "INTELLIGENT CONNECTION" selected, the setting can be changed to "INFRASTRUCTURE" later.

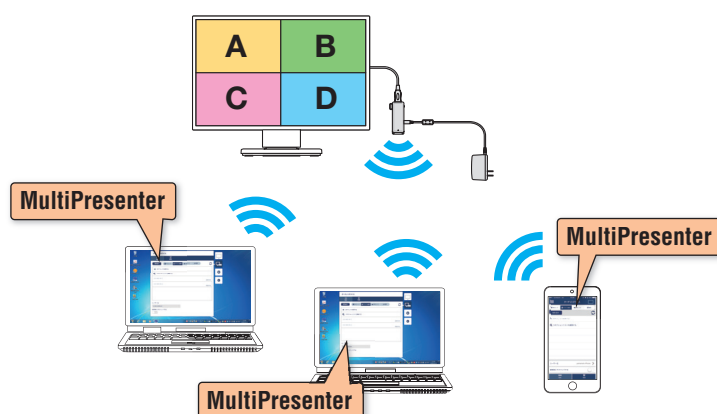
### ▶ ADDITIONAL EXPLANATIONS

#### About the "INTELLIGENT CONNECTION" and "INFRASTRUCTURE" functions

- About [INTELLIGENT CONNECTION (recommended)]

- The MultiPresenter Stick and computers or smartphones are connected without using an existing network environment.

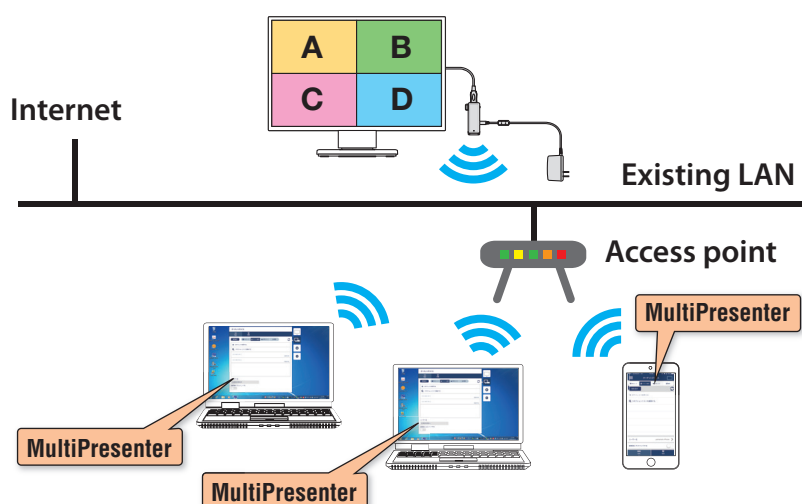
##### Example of connections



- About [INFRASTRUCTURE]

- The MultiPresenter Stick is used connected to an existing network environment.

##### Example of connections



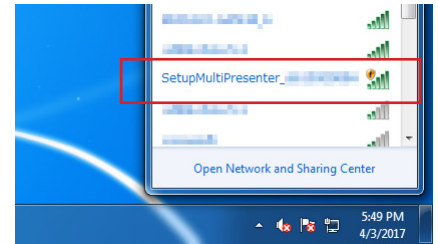
When using a commercially available USB mouse with the MultiPresenter Stick, the initial settings can be ended after only selecting the language used on the MultiPresenter Stick's menu screens and others. However, the wireless LAN connection method is automatically set to "INTELLIGENT CONNECTION". In this case as well, the setting can be changed to "INFRASTRUCTURE" later. (→ "4-2-2. Making the initial settings using a commercially available USB mouse" on page 12)

## 4-2-1. Making the initial settings using a computer or smartphone

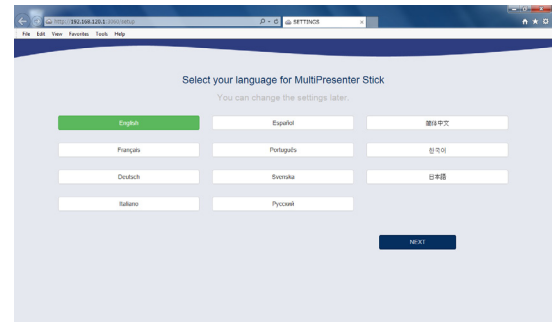
First, connect the computer or smartphone to the same network as the MultiPresenter Stick (SSID displayed on the screen).

\* The following explanation is for Windows 7.

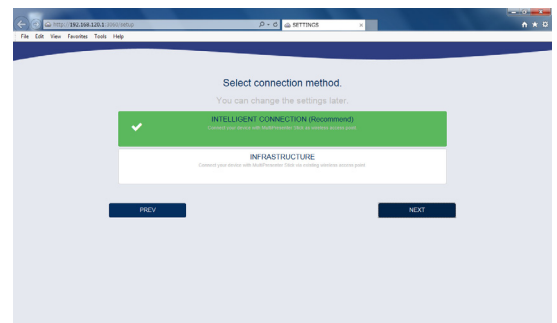
1. Click the wireless LAN icon on the task tray.
2. From the list of wireless networks, select the SSID shown on the screen ("SetupMultiPresenter\_1234567890" (NOTE: the 1234567890 section differs from product to product)), then click [Connect].



3. Launch the web browser and input the URL indicated on the screen ("http://192.168.120.1").  
The language selection menu appears.
4. Select [English] on the web browser screen, then click [NEXT].



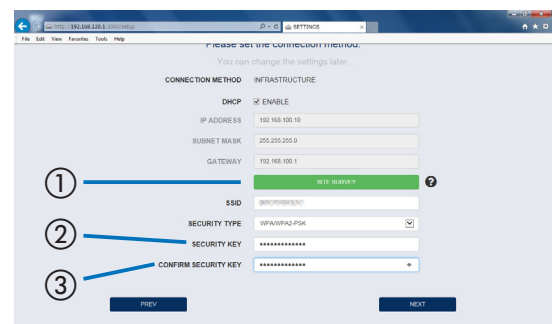
5. Select [INTELLIGENT CONNECTION (recommended)] or [INFRASTRUCTURE], then click [NEXT].
  - When [INTELLIGENT CONNECTION (recommended)] was selected, this completes the initial settings. Close the web browser. Proceed to "4-3. Preparing the MultiPresenter application" on page 12.
  - When [INFRASTRUCTURE] was selected, the connection settings screen appears. Proceed to step 6 below.



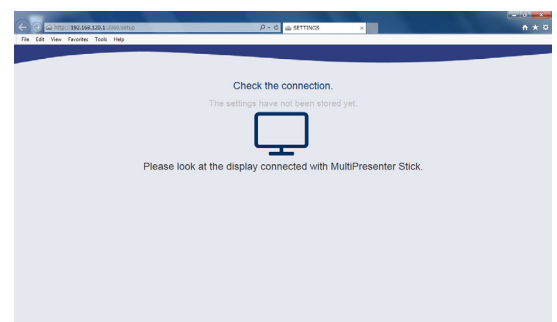
6. Follow the instructions of your network administrator for the settings for connecting to an existing network.

### Example of operation

- ① Click [SITE SURVEY] and select the SSID (access point).
- ② Input the SSID's security key (password).
- ③ To confirm, input the security key again.



7. After making the connection settings, click [NEXT].  
The next screen appears.



8. Switch the SSID of the computer or smartphone to the SSID displayed on the screen of the display or projector.
  - For the procedure for switching the SSID, see steps 1 and 2 on the previous page.

9. Input the URL displayed on the screen of the display or projector into the web browser.
 

NOTE: Perform steps 8 and 9 within 3 minutes of each other. If no operation is performed within 3 minutes, start over from step 1 on the previous page.

**NOTE**

- It may take some time for the URL to be displayed, depending on the access point to which you are connecting.
- If there are mistakes in the infrastructure settings that were input, connection of the access point and MultiPresenter Stick may fail and the URL may not be displayed.

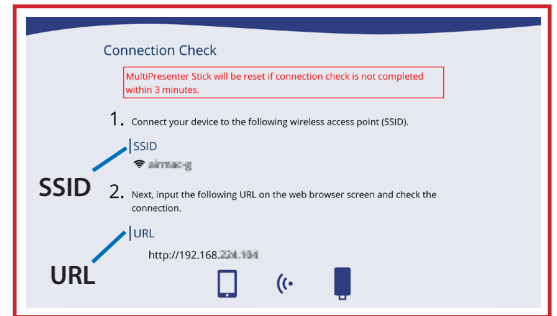
When the screen shown at the right appears, the MultiPresenter Stick's initial settings are completed.

10. Click "Move to the start-up screen" on the web browser screen shown on the right in step 9.
 

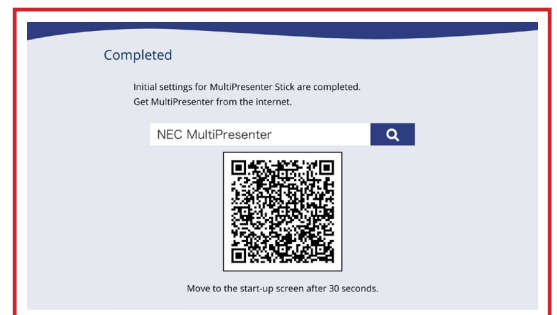
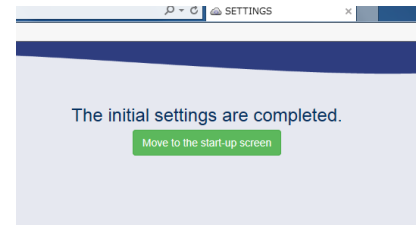
The web server screen appears.

Proceed to "4-3. Preparing the MultiPresenter application" on the next page.

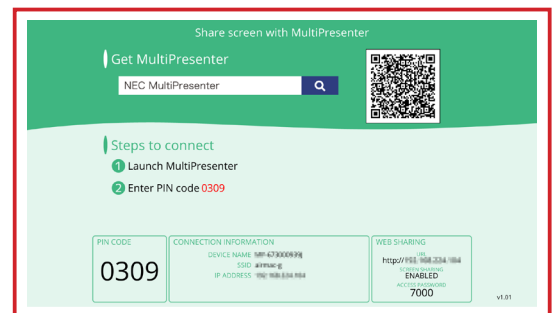
The screen at the right is referred to as the MultiPresenter Stick's start-up screen.



Screen on the display or projector



Screen on the display or projector

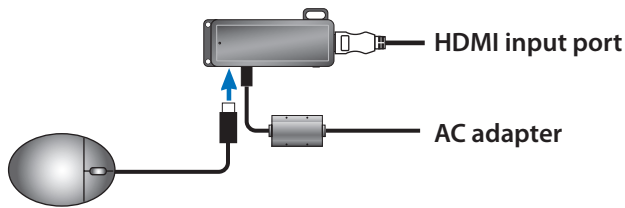


## 4-2-2. Making the initial settings using a commercially available USB mouse

Continued from step 6 in “4-1. Connecting the MultiPresenter Stick to an image display device and turning on the power” on page 8.

1. Connect a commercially available USB mouse to the MultiPresenter Stick's USB port.

The MultiPresenter Stick's language selection menu appears.

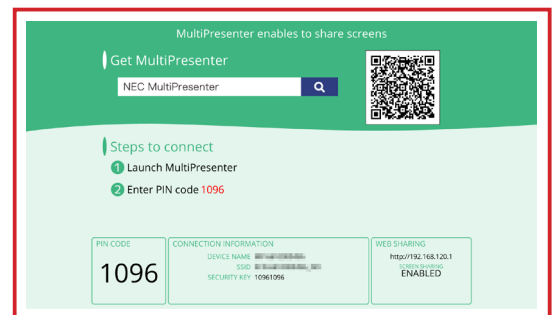


Screen on the display or projector

2. Select [English] using the USB mouse.  
The MultiPresenter Stick's start-up screen appears.  
This completes the initial settings of the MultiPresenter Stick.

### NOTE

- When the initial settings are performed using a USB mouse, the wireless LAN connection is set to “INTELLIGENT CONNECTION”.



## 4-3. Preparing the MultiPresenter application

### 4-3-1. Using a computer (Windows or OS X)

- Access the NEC website, download the MultiPresenter application for the corresponding OS and install the application on the computer.

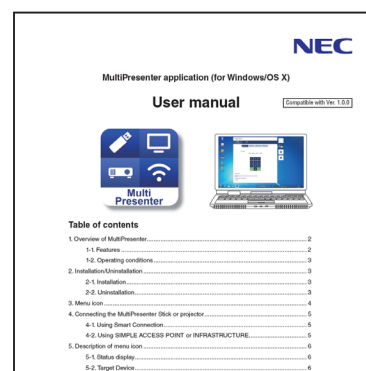
<http://www.nec-display.com/dl/en/soft/multipresenter/index.html>

### 4-3-2. Using an Android device or an iOS device

- For Android: Access Google Play and install the MultiPresenter application on the device.
- For iOS: Access the App Store and install the MultiPresenter application on the device.

### REMARKS

- The user's manuals for MultiPresenter for Windows/OS X and for MultiPresenter for Android/iOS can be downloaded from NEC's MultiPresenter website.



## 4-4. Connecting the MultiPresenter application to the MultiPresenter Stick and displaying images

### 4-4-1. Using a computer (Windows or OS X)

#### ● Connecting with the INTELLIGENT CONNECTION function

1. Connect the MultiPresenter Stick to the display or projector, turn on the power and display the start-up screen.
2. Launch the MultiPresenter application.  
The target device screen is displayed.
3. Input the PIN code displayed on the start-up screen on the target device screen.  
Once the connection with the MultiPresenter Stick is completed, the computer screen is displayed on the display or projector screen.



#### ● To connect with the Infrastructure function

1. Connect the MultiPresenter Stick to the display or projector, turn on the power and display the start-up screen.
2. Connect your computer to the network to which the MultiPresenter Stick is connected.  
\* Check the connection information of the network to which the MultiPresenter Stick is connected with the network administrator.
3. Launch the MultiPresenter application.  
The target device screen is displayed.
4. Input the PIN code displayed on the start-up screen in the target device screen.  
Once the connection with the MultiPresenter Stick is completed, the computer screen is displayed on the display or projector screen.

#### ● Connecting with the Simple Access Point function

- \* For details on the Simple Access Point function, see page 28.
1. Connect the MultiPresenter Stick to the display or projector, turn on the power and display the start-up screen.
  2. Connect your computer to the SSID displayed on the start-up screen.
  3. Launch the MultiPresenter application.  
The target device screen is displayed.
  4. Input the PIN code displayed on the start-up screen in the target device screen.  
Once the connection with the MultiPresenter Stick is completed, the computer screen is displayed on the display or projector screen.

### 4-4-2. Using an Android device or an iOS device

#### ● Connecting with the INTELLIGENT CONNECTION function

1. Connect the MultiPresenter Stick to the display or projector, turn on the power and display the start-up screen.
2. Launch the MultiPresenter application.  
The target device screen is displayed.
3. Input the PIN code displayed on the start-up screen on the target device screen.  
Once the connection with the MultiPresenter Stick is completed, the application's standby screen is displayed on the display or projector screen.



## ▶ **IMPORTANT**

When using an iOS device, the Wi-Fi settings must be made manually in order to connect with reception devices (such as the MultiPresenter Stick and a projector) by wireless LAN.

### ● **Connection procedure**

1. On the home screen, tap "MultiPresenter".  
The MultiPresenter application is launched and the target device screen is displayed.
2. Input the PIN code displayed on the start-up screen of the reception device or on the on-screen menu in the target device screen.  
A screen with explanations on it appears.
3. Tap "Proceed to Wi-Fi settings".
4. From the list of networks displayed on the device's screen, select the SSID displayed on the start-up screen.
5. When the password screen appears on the device, input the security key displayed on the start-up screen, then tap "Connect".
6. Once connected to the selected SSID, tap "RETURN TO MULTIPRESENTER" displayed in the upper left of the "SETTINGS" screen. Or, press the home button to display the home screen, then tap "MultiPresenter".  
The MultiPresenter application connects with the reception device and the MultiPresenter application's standby screen appears on the reception device.

### ● **To connect with the Infrastructure function**

1. Connect the MultiPresenter Stick to the display or projector, turn on the power and display the start-up screen.
2. Connect your device to the network to which the MultiPresenter Stick is connected.
  - \* Check the connection information of the network to which the MultiPresenter Stick is connected with the network administrator.
3. Launch the MultiPresenter application.  
The target device screen is displayed.
4. Input the PIN code displayed on the start-up screen in the target device screen.  
Once the connection with the MultiPresenter Stick is completed, the application's standby screen is displayed on the display or projector screen.

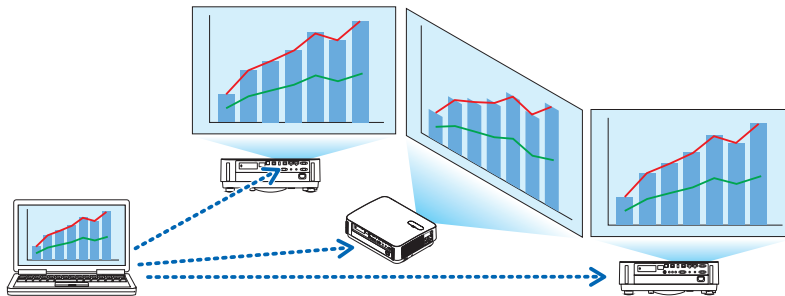
### ● **Connecting with the Simple Access Point function**

- \* For details on the Simple Access Point function, see page 28.
1. Connect the MultiPresenter Stick to the display or projector, turn on the power and display the start-up screen.
  2. Connect your device to the SSID display on the start-up screen.
  3. Launch the MultiPresenter application.  
The target device screen is displayed.
  4. Input the PIN code displayed on the start-up screen in the target device screen.  
Once the connection with the MultiPresenter Stick is completed, the application's standby screen is displayed on the display or projector screen.

## ▶ ADDITIONAL EXPLANATIONS

### Connecting to multiple MultiPresenter Sticks

It is possible to connect from one computer or smartphone to multiple MultiPresenter Sticks (up to 4 units) and display their images.



On the MultiPresenter application's target device screen, perform the operation to select [Multiple].

1. Set the wireless LAN mode of the MultiPresenter Sticks to be connected to Infrastructure and connect all the MultiPresenter Sticks to the same network.
2. Connect your computer or smartphone to the same network as the one chosen in step 1.
3. Launch the MultiPresenter application.
4. On the target device screen, click [Select].  
A list of connectable devices is displayed.
5. Click [Multiple].

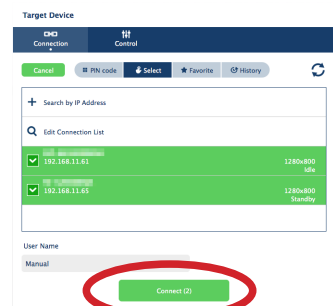
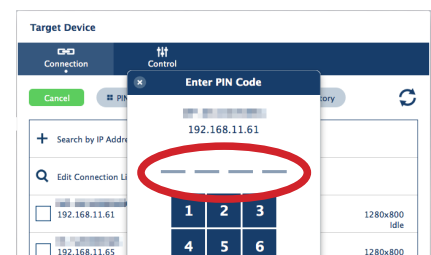
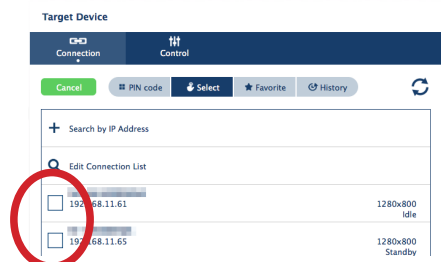
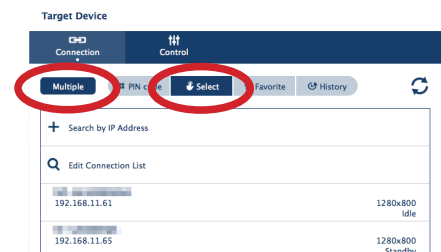
Check boxes appear to the left of the devices on the list.

6. Click the devices you want to connect.

The PIN code input screen appears.

7. Input the PIN code displayed on the device's start-up screen.

8. Once all the devices to be connected are checked, click [Connect] at the bottom of the screen.



## 5. Web server functions

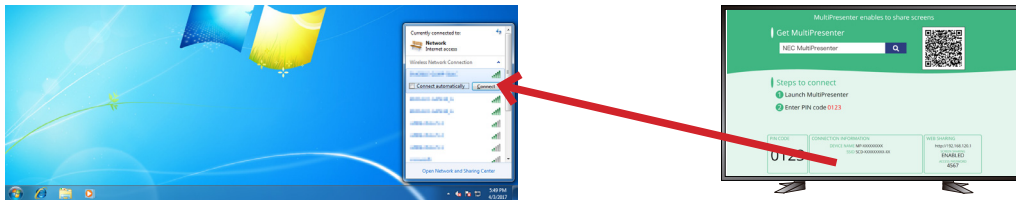
### 5-1. Connecting computers or smartphones to the MultiPresenter Stick's web server

#### 5-1-1. Using a computer

- \* The following is an example of the operation for Windows 7 when connected with the INTELLIGENT CONNECTION function.

This explanation starts from the point at which the MultiPresenter Stick's start-up screen is displayed.

1. Click the wireless LAN icon on the task tray.
2. From the list of wireless networks, select the SSID displayed on the start-up screen, then click [Connect].



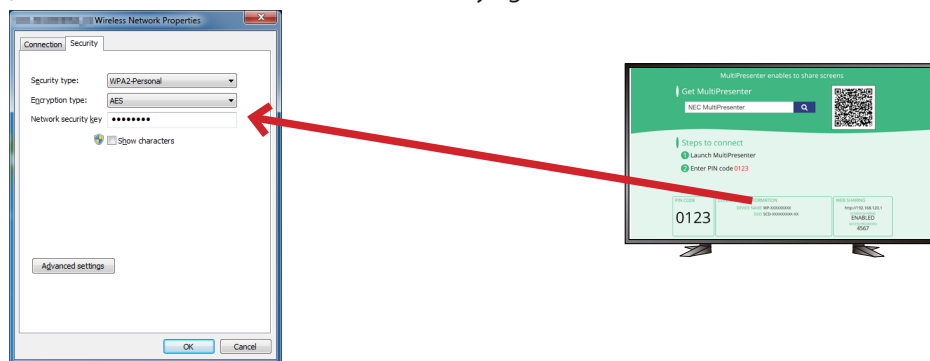
When connecting for the first time, the security key input screen appears.

3. Input the security key (an 8-digit number) displayed on the start-up screen, then click [OK].



#### NOTE

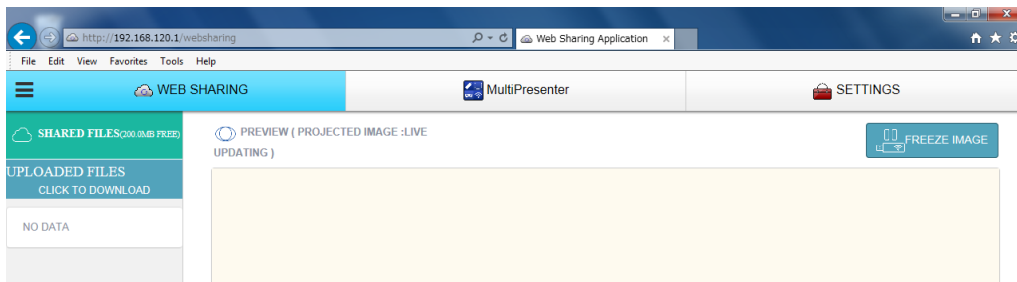
- If the security key has changed since you last connected to that SSID, the message "Cannot connect to XXXXXXXX" is displayed. In this case, right-click the SSID on the wireless network list and select "Properties". Input the security key (an 8-digit number) displayed on the start-up screen into the "Network security key" field of the properties window, then click [OK]. Next, click the wireless LAN icon on the task tray again and select the SSID.



4. Once connected to the SSID, launch the web browser.
  5. Input the URL displayed on the start-up screen (<http://192.168.120.1>) into the URL input field of the web browser, then press the Enter key.
- The MultiPresenter Stick's web server screen is displayed on the web browser.



The web server screen is divided into three tabs: [WEB SHARING], [MultiPresenter] and [SETTINGS].



## 5-1-2. Using a smartphone

\* The following is an example of the operation for an iOS device when connected with the INTELLIGENT CONNECTION function.

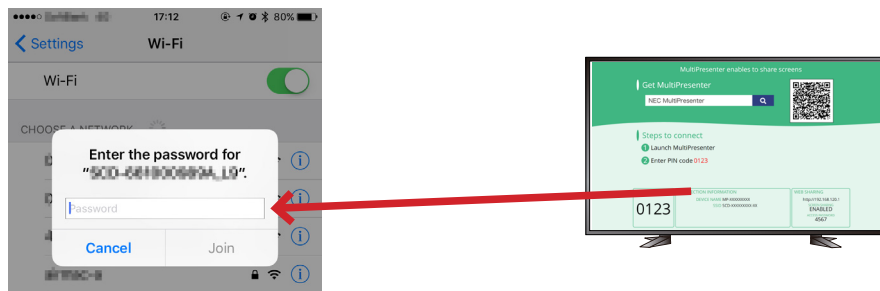
This explanation starts from the point at which the MultiPresenter Stick's start-up screen is displayed.

1. On the home screen, tap the "Settings" icon.
2. Tap "Wi-Fi".
3. From the list of networks, tap the SSID displayed on the start-up screen.



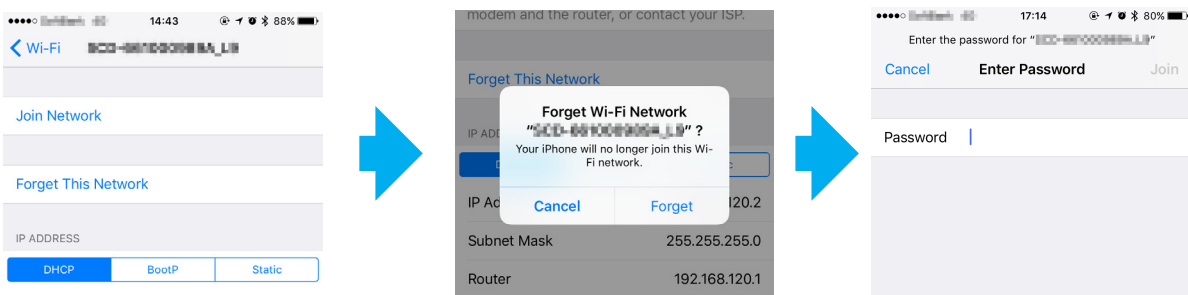
When connecting for the first time, the password input screen appears.

4. Input the security key (an 8-digit number) displayed on the start-up screen, then tap [Join].



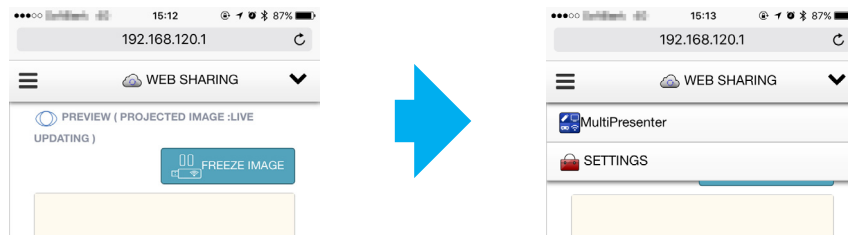
### NOTE

- If the security key has changed since you last connected to that SSID, it is not possible to connect to that SSID. In this case, tap **i** on the right of the SSID to which you want to connect. Next tap "Forget This Network", then tap "Forget". Next tap "Connect to network". The password input screen appears. Input the security key (an 8-digit number) displayed on the start-up screen, then tap [Join].



5. After connecting to the SSID, return to the home screen and tap "Safari".
6. In the Safari URL input field, input the URL displayed on the start-up screen (<http://192.168.120.1>), then tap "Open". The MultiPresenter Stick's web server screen is displayed in Safari.

The web server screen is divided into three tabs: [WEB SHARING], [MultiPresenter] and [SETTINGS].



## ► ADDITIONAL EXPLANATIONS

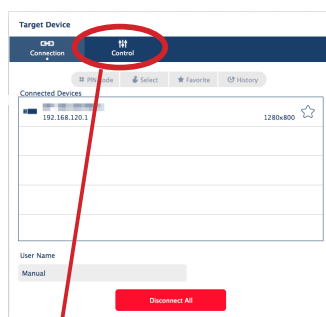
### Using the MultiPresenter application to display the web server screen

The MultiPresenter application can be used to display the web server screen.

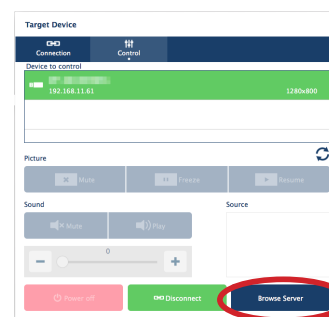
1. Connect your computer or smartphone to the network to which the MultiPresenter Stick is connected.
2. Launch the MultiPresenter application.
3. On the target device screen, input the PIN code.
4. After connection to the MultiPresenter Stick is completed, click or tap the [Control] button on the target device screen.
5. Click or tap the [Browse Server] button.  
The web server screen appears.

#### ● For Windows/OS X

##### Target device screen



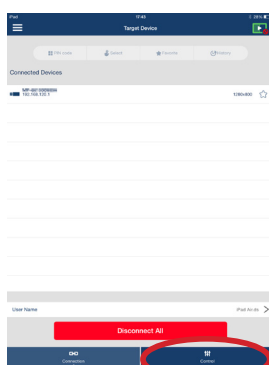
Click [Control]



Click [Browse Server]

#### ● For iOS/Android

##### Target device screen



Tap [Control]



Tap [Browse Server]

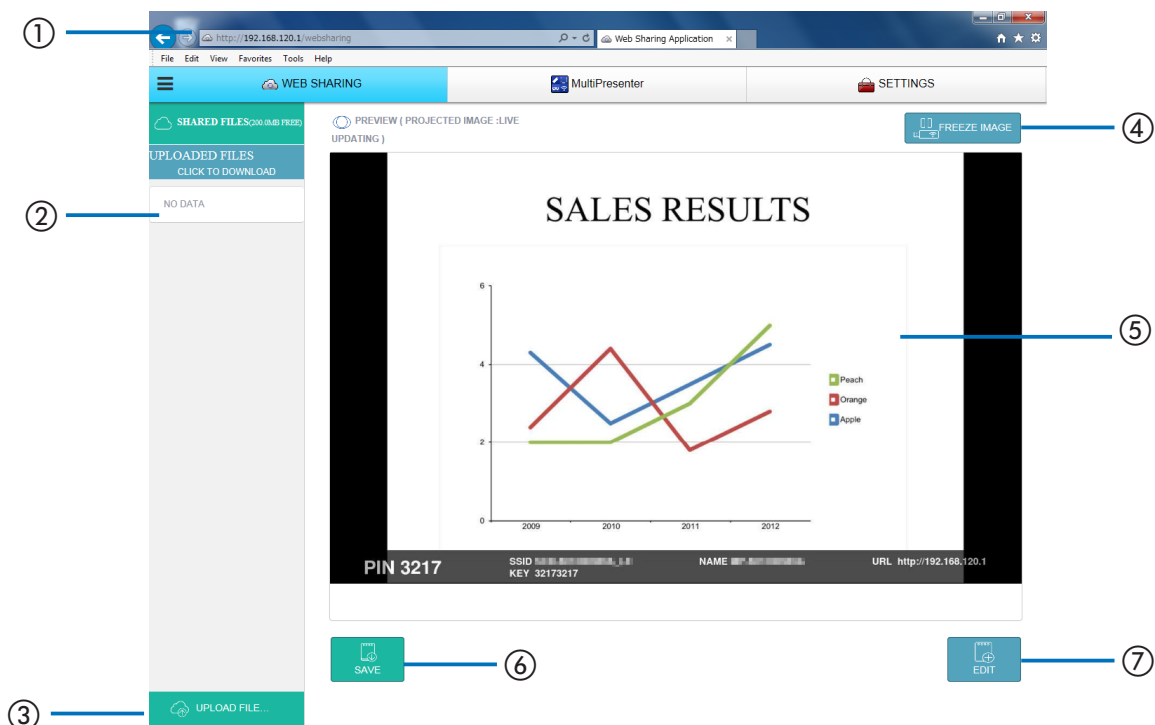
## 5-2. Using a web browser to transfer files between devices (web sharing)

- The images displayed with the MultiPresenter Stick can be displayed for approximately 5 seconds each on the web browser's screen and the desired images can be saved on your device (Web Capture function).
- Text can be added on the currently displayed screen and memos can be created for up to 10 pages. Memos you have created can be saved on your device as images.
- Files on your device can be uploaded to the MultiPresenter Stick's web server and shared among devices connected to the MultiPresenter Stick on the network.



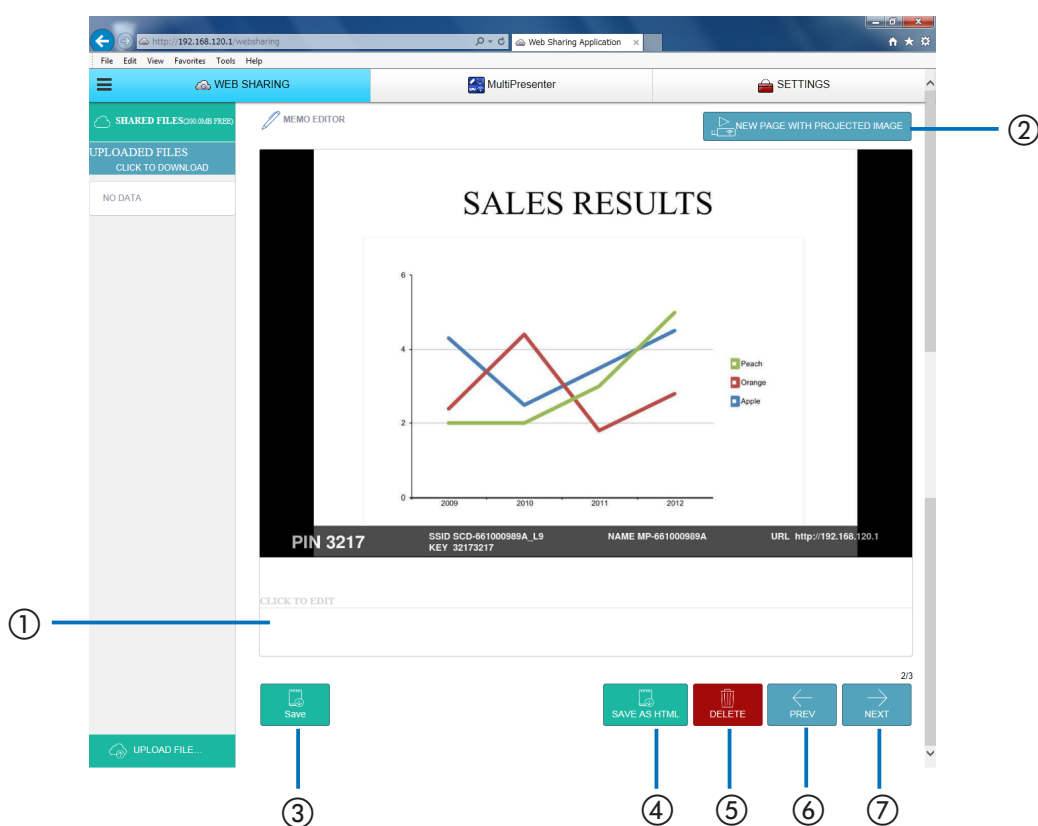
### NOTE

- When using Safari, the screen may not be displayed properly, depending on the timing for reloading. Try restarting Safari.
- With iOS and OS X devices, the function for saving in JPEG format (⑥ on the screen below and ③ on the screen on the next page) and the function for saving meetings in HTML format on the memo creation screen (④ on the screen on the next page) cannot be used.
- If you are using Internet Explorer, storing by right-clicking on the current web capture may not work properly. We recommend pressing the [FREEZE IMAGE] button (④ on the screen below) to stop the display from renewing every 5 seconds, then saving the image.
- Up to 50 devices can be connected to each MultiPresenter Stick. However, the number of units that can be connected simultaneously will differ depending on the performance of the network devices being used.



No.	Description
①	http://<the MultiPresenter Stick's IP address>
②	Displays the names of shared files stored on the MultiPresenter Stick's web server. Files can be downloaded to your device by clicking the file name. NOTE 1: The files stored on the web server are automatically deleted when all the sessions are closed. (By default) NOTE 2: A separate application may be required to use files downloaded on a tablet devices, etc.
③	Calls out files to be shared from the device currently being used and uploads them to the web server. The names of files that have been called out are displayed at [UPLOADED FILES] above.
④	Stops renewing every 5 seconds. Click again to resume renewing.
⑤	References images displayed with the MultiPresenter Stick approximately every 5 seconds.
⑥	Stores (downloads) images displayed at ⑤ onto your device in JPEG format. NOTE: Not displayed for iOS or OS X devices.
⑦	Creates memos using the image currently displayed at the center.

## ● About the memo creation screen



No.	Description
①	Click to input text. After completing the input, click [OK] on the right to enter. * [OK] is displayed when ① is clicked.
②	A new page for inputting a memo is created when the image at the center of the screen switches, etc.
③	Saves the page on which the text has been added in JPEG format. NOTE: Not displayed for iOS or OS X devices.
④	Saves all pages in a single file in HTML format. NOTE: Not displayed for iOS or OS X devices.
⑤	Deletes the page currently being edited or all pages.
⑥	When multiple pages have been created, returns to the previous page.
⑦	When multiple pages have been created, displays the next page.

## 5-3. Controlling the number of panels or moderator, in the MultiPresenter Managed mode (MultiPresenter)

The MultiPresenter operating modes include the Free mode and the Managed mode.

### ▶ ADDITIONAL EXPLANATIONS

#### About the MultiPresenter “Free mode” and “Managed mode”

##### ● Free mode

The Free mode is a mode for freely connecting from the MultiPresenter application installed on a computers or smartphone. The screen's split-panel pattern changes according to the number of devices that are connected. It is also possible to switch between split panel display and full-screen display from the MultiPresenter application on a device. The MultiPresenter Stick is set to the Free mode upon shipment from the factory.

##### ● Managed mode

The managed mode is a mode in which control of the screen with the MultiPresenter application is prohibited when multiple devices are connected to the MultiPresenter Stick, like in the Free mode. The screen's panel pattern is changed and the display is switched between the split panel display and full-screen display from the web server's MultiPresenter screen.

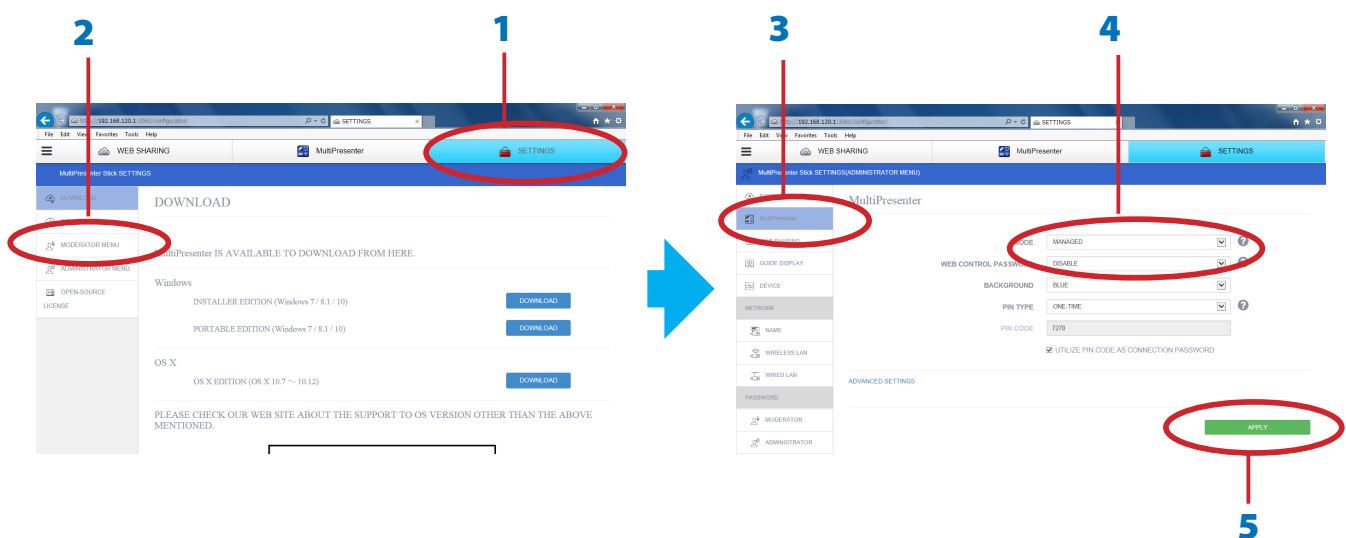
The Managed mode can only be used on one device. If there is already a device connected in the Managed mode, the Managed mode cannot be used on other devices.

### 5-3-1. Switching from the Free mode to the Managed mode

#### ▶ NOTE

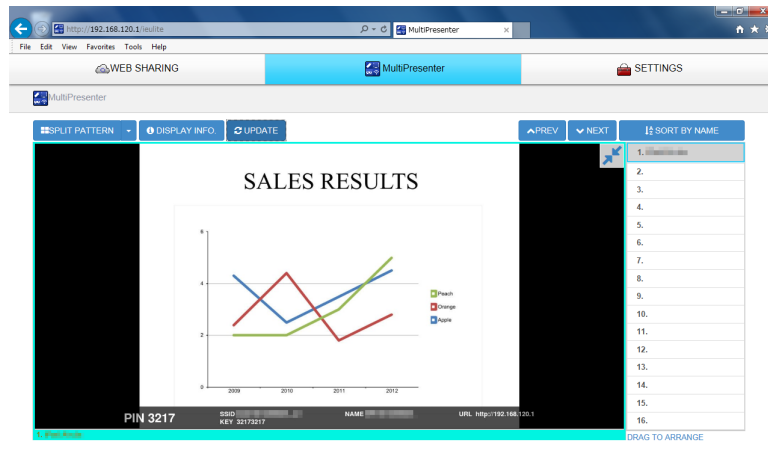
- If other devices are connected to the MultiPresenter Stick, disconnect them all. When other devices are connected to the MultiPresenter Stick, the mode may be changed but the change does not take effect.

1. Click the [SETTINGS] tab.
  2. Click [ADMINISTRATOR MENU] on the left of the screen.
  3. Click [MultiPresenter] on the left of the screen.
- The screen for setting the MultiPresenter operating mode is displayed.
4. If [FREE] is displayed in the mode field, click the field and change it to [MANAGED].
  5. Click [APPLY] in the lower right of the screen.



### 5-3-2. Displaying the MultiPresenter screen

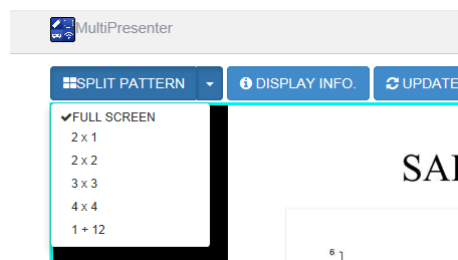
1. Connect the MultiPresenter application of other devices to the MultiPresenter Stick.
2. In the MultiPresenter application, select the file and send the image to the MultiPresenter Stick.
3. On the web server screen, click the [MultiPresenter] tab.  
A display like the one below appears.



### 5-3-3. Changing the number of panels on the screen

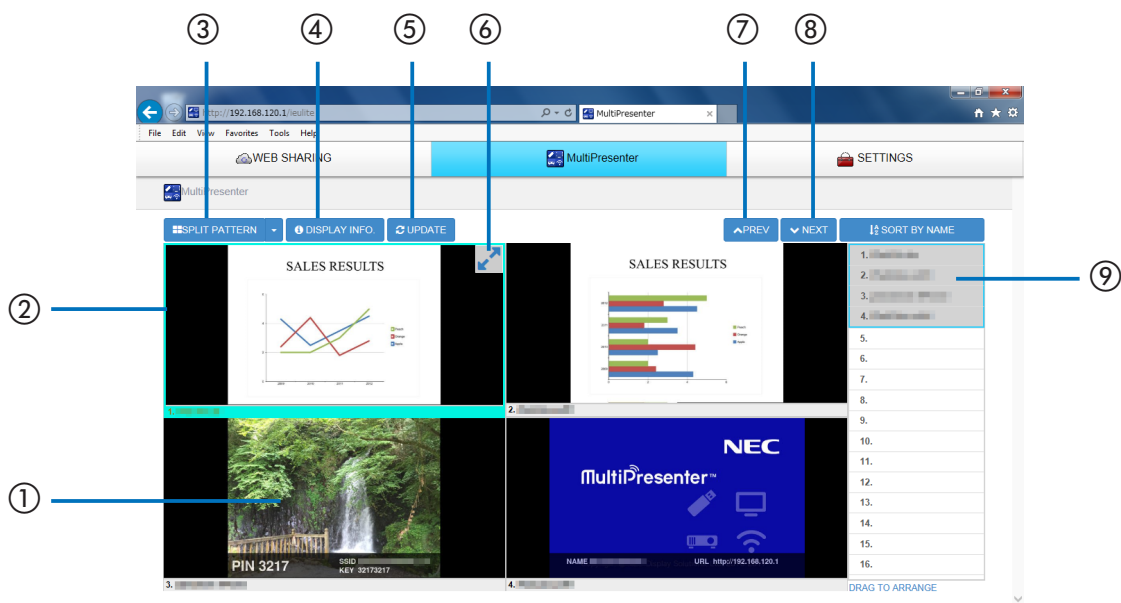
This procedure is continued from step 3 above.

4. Connect multiple devices to the MultiPresenter Stick and send images from the MultiPresenter application on all the devices.
5. Click [SPLIT PATTERN] on the MultiPresenter screen.  
A pull-down menu is displayed.



6. Click a pattern item on the screen.  
When [2x2] is selected here, the screen changes as shown below.

#### ● About the split panel display screen

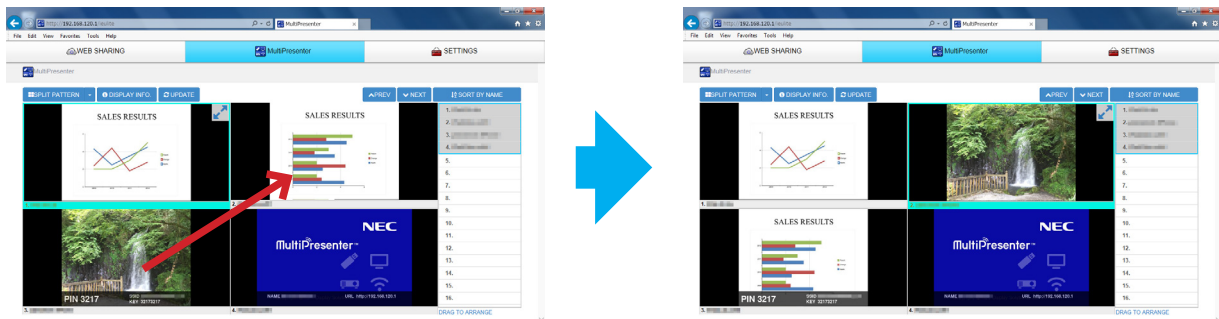


No./Name	Description
① Thumbnail Gallery	<ul style="list-style-type: none"> <li>The thumbnails of the images sent from the MultiPresenter application to the MultiPresenter Stick are displayed here.</li> <li>The standby screen is displayed if no file is selected with a MultiPresenter application connected to the MultiPresenter Stick.</li> <li>This section is displayed in black if no MultiPresenter application is connected.</li> </ul>
② Focus	<ul style="list-style-type: none"> <li>The focus is displayed with a light blue frame.</li> </ul>
③ SPLIT PATTERN	<ul style="list-style-type: none"> <li>Changes the number of panels into which the screen is split here. Patterns 2×1, 2×2, 3×3, 4×4 and 1+12 can be selected according to the purpose of the meeting.</li> </ul>
④ DISPLAY INFO.	<ul style="list-style-type: none"> <li>Switches whether or not to display the device information on the screen.</li> </ul>
⑤ UPDATE IMAGE	<ul style="list-style-type: none"> <li>Updates the thumbnails to the latest status.</li> </ul>
⑥ Maximize Screen	<ul style="list-style-type: none"> <li>Click this to maximize the image in the focus. Click again to return to the previous display status.</li> </ul>
⑦ PREV, ⑧ NEXT	<ul style="list-style-type: none"> <li>When there are multiple pages of thumbnail images, use these to switch the displayed page.</li> </ul>
⑨ List of devices	<ul style="list-style-type: none"> <li>This displays the names of the devices connected to the MultiPresenter Stick's web server.</li> <li>The page currently displayed on the screen is indicated in gray.</li> <li>The display positions can be rearranged by dragging and dropping device names to the thumbnail image.</li> <li>The device names can be sorted by name by clicking [SORT BY NAME].</li> </ul>

### 5-3-4. Changing the order of the images on the screen

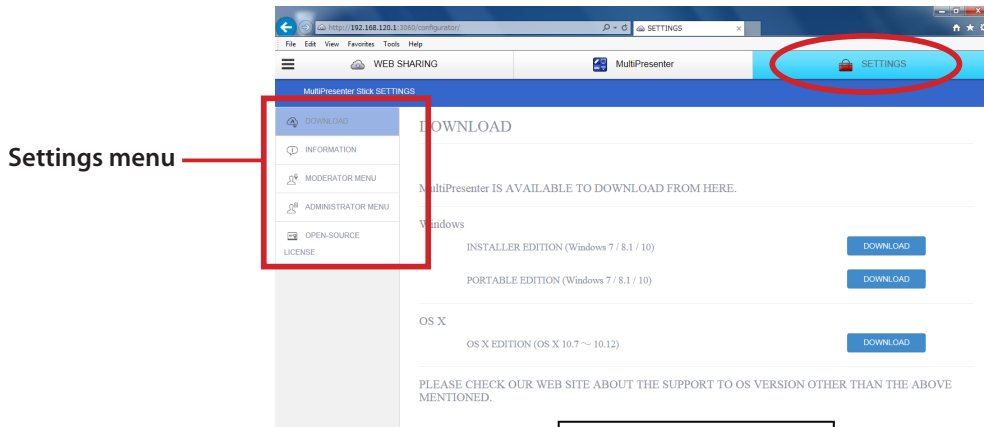
Click one of the thumbnail images displayed on the MultiPresenter screen and drag and drop it to the frame to which you want to move it.

The position in which the image is displayed is changed.



## 5-4. Using a web browser to change the MultiPresenter Stick's settings (SETTINGS tab)

To display the settings menu, click the [SETTINGS] tab on the web server screen.



There are three types of settings menu, depending on the user.

Types of menus	Description
Normal menu	This is the first menu that is displayed on the left of the screen when the [SETTINGS] tab on the web server screen is clicked.
Moderator menu	This is the menu for the moderator when using the MultiPresenter Stick with multiple users connected to it. It is displayed when [MODERATOR MENU] on the normal menu is clicked.
Administrator menu	This is the menu for the administrator when using the MultiPresenter Stick with multiple users connected to it. It is displayed when [ADMINISTRATOR MENU] on the normal menu is clicked.

### ● Detailed explanation of the settings menu

#### ► IMPORTANT

- After changing the settings on the settings menu, click the [APPLY] button in the lower right of that screen. The change in the settings does not become effective unless the [APPLY] button is clicked.

### 5-4-1. Normal menu

Menu item name	Description
DOWNLOAD	Displays a screen for downloading the MultiPresenter application (for Windows/OS X) from the MultiPresenter Stick. For the latest version of the MultiPresenter application (for Windows, OS X, iOS and Android), see the NEC MultiPresenter website.
INFORMATION	Displays the MultiPresenter Stick's device information and network information.
MODERATOR MENU	Displays the Moderator menu.
ADMINISTRATOR MENU	Displays the Administrator menu.
OPEN SOURCE LICENSE	Displays a screen for downloading license information on the software used on the MultiPresenter Stick (GPL, LGPL, and other software).



## 5-4-2. Moderator menu

Menu item name		Description
DOWNLOAD		Displays a screen for downloading the MultiPresenter application (for Windows/OS X) from the MultiPresenter Stick. For the latest version of the MultiPresenter application (for Windows, OS X, iOS and Android), see the NEC MultiPresenter website.
MultiPresenter		<ul style="list-style-type: none"> <li>● <b>MODE</b> Select whether to set MultiPresenter to the Free mode or Managed mode.</li> <li>● <b>WEB CONTROL PASSWORD</b> When in the Managed mode, set whether to enable or disable the password used by the moderator to connect to the web server.</li> <li>● <b>BACKGROUND</b> Select whether to set the background color of the MultiPresenter screen to blue or black.</li> </ul>
WEB SHARING		<ul style="list-style-type: none"> <li>● <b>SCREEN SHARING</b> When [ENABLED] is selected, images sent from the MultiPresenter application to the MultiPresenter Stick and displayed are displayed on the web server screen. When [DISABLED] is selected, the web server screen is not displayed.</li> <li>● <b>ACCESS PASSWORD</b> Select whether or not to use a password when displaying the web sharing screen. When [USE] is selected, the access password (a 4-digit number) is displayed in the lower right of the MultiPresenter Stick's start-up screen. If the setting is changed, the new setting becomes effective when all the sessions are closed (when all the devices are disconnected).</li> <li>● <b>AUTO DELETE</b> Select whether to automatically delete the shared files when all the sessions are closed or to keep them.</li> </ul> <div style="border: 1px solid black; padding: 5px; margin-top: 10px;"> <p>► <b>NOTE</b></p> <ul style="list-style-type: none"> <li>• Even if set to [DISABLED], the shared files are deleted when the MultiPresenter Stick's power is turned off.</li> </ul> </div> <ul style="list-style-type: none"> <li>● <b>DELETE SHARED FILES...</b> When the [DELETE SHARED FILES...] button on the screen is clicked, all the files shared at that time are deleted.</li> </ul>
GUIDE DISPLAY		This is used to make settings related to the display of the MultiPresenter Stick's start-up screen and the web server's MultiPresenter screen. Any image file can be uploaded and used as the wallpaper for the start-up menu.
PASSWORD	MODERATOR	This sets the password used when the moderator connects to the web server. From 0 to 10 characters, consisting of letters, numbers and symbols, can be input. If no letters are input, this means there is no password.
INFORMATION		Displays the MultiPresenter Stick's device information and network information.
RETURN/LOGOUT		Returns to the normal menu. [RETURN] is displayed if no menu password is set. [LOGOUT] is displayed if a menu password is set.
RESTART		When the [RESTART] button in the lower right of the screen is clicked, the MultiPresenter Stick is restarted. Restart the MultiPresenter Stick if its operation is unstable.

### 5-4-3. Administrator menu

Menu item name	Description
DOWNLOAD	Displays a screen for downloading the MultiPresenter application (for Windows/OS X) from the MultiPresenter Stick. For the latest version of the MultiPresenter application (for Windows, OS X, iOS and Android), see the NEC MultiPresenter website.
MultiPresenter	<ul style="list-style-type: none"> <li>● <b>MODE</b> Select whether to set MultiPresenter to the Free mode or Managed mode.</li> <li>● <b>WEB CONTROL PASSWORD</b> When in the Managed mode, set whether to enable or disable the password used by the moderator to connect to the web server.</li> <li>● <b>BACKGROUND</b> Select whether to set the background color of the MultiPresenter screen to blue or black.</li> <li>● <b>PIN TYPE</b> Select the type of PIN code. When [ONE-TIME] is selected, when the MultiPresenter Stick's power is on but no function is being used, a random PIN code is generated automatically approximately every 10 minutes. When [STATIC] is selected, any 4-digit number can be set as the PIN code.</li> <li>● <b>PIN CODE</b> If [STATIC] was selected as the PIN code type, input a 4-digit number.</li> <li>● <b>UTILIZE PIN CODE AS CONNECTION PASSWORD</b> Set whether or not to use the PIN code as the password when connecting the MultiPresenter application to the MultiPresenter Stick. When checked, the PIN code is used as the password. When not checked, the PIN code is not used as the password.</li> </ul> <p><b>[Advanced settings]</b></p> <ul style="list-style-type: none"> <li>● <b>COMMUNICATION SPEED LIMIT</b> Set the upper limit for the communication speed. If the communication speed is set to a low value, transfer may not be smooth.</li> </ul>
WEB SHARING	<ul style="list-style-type: none"> <li>● <b>SCREEN SHARING</b> When [ENABLED] is selected, images sent from the MultiPresenter application to the MultiPresenter Stick and displayed are displayed on the web server screen. When [DISABLED] is selected, the web server screen is not displayed.</li> <li>● <b>ACCESS PASSWORD</b> Select whether or not to use a password when displaying the web sharing screen. When [USE] is selected, the access password (a 4-digit number) is displayed in the lower right of the MultiPresenter Stick's start-up screen. If the setting is changed, the new setting becomes effective when all the sessions are closed (when all the devices are disconnected).</li> <li>● <b>AUTO DELETE</b> Select whether to automatically delete the shared files when all the sessions are closed or to keep them.</li> </ul> <div style="border: 1px solid black; padding: 10px; margin: 10px 0;"> <p>▶ <b>NOTE</b></p> <ul style="list-style-type: none"> <li>Even if set to [DISABLED], the shared files are deleted when the MultiPresenter Stick's power is turned off.</li> </ul> </div> <ul style="list-style-type: none"> <li>● <b>DELETE SHARED FILES...</b> When the [DELETE SHARED FILES...] button on the screen is clicked, all the files shared at that time are deleted.</li> </ul>
GUIDE DISPLAY	This is used to make settings related to the display of the MultiPresenter Stick's start-up screen and the web server's MultiPresenter screen. Any image file can be uploaded and used as the wallpaper for the start-up menu.

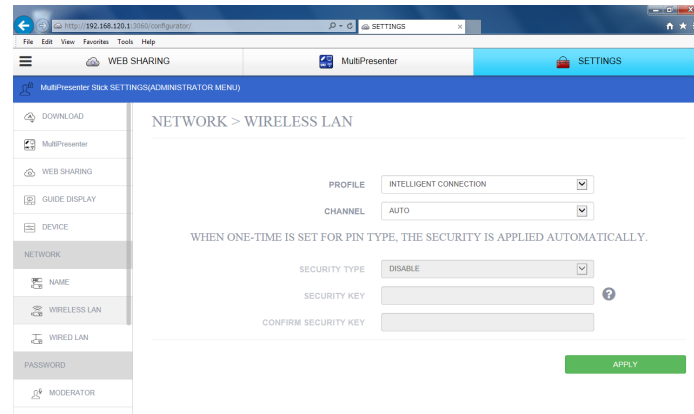
\* Continued on next page.

Menu item name		Description
DEVICE		<p>● <b>OUTPUT RESOLUTION</b> Select the resolution of the output from the MultiPresenter Stick. The resolution can be set to AUTO, 1920x1080, 1280x800 or 1024x768.</p> <p>● <b>DISPLAY LANGUAGE</b> Select the language displayed on the screen. One of 11 languages can be selected: Japanese, English, French, German, Italian, Spanish, Portuguese, Swedish, Russian, Chinese (simplified) and Korean.</p>
NETWORK	NAME	Set the device name displayed for MultiPresenter application device searching and the host name registered to the DNS via the DHCP server. This is set to the MultiPresenter Stick's serial number upon shipment from the factory.
	WIRELESS LAN	* For an explanation, see "6. Setting the method of connecting to a wireless or wired LAN". (→ Page 28)
	WIRED LAN	
PASSWORD	MODERATOR	This sets the password used when the moderator connects to the web server. From 0 to 10 characters, consisting of letters, numbers and symbols, can be input. If no letters are input, this means there is no password.
	ADMINISTRATOR	<p>Set the password for displaying the administrator menu. From 0 to 10 characters, consisting of letters, numbers and symbols, can be input. If no letters are input, this means there is no password.</p> <div style="border: 2px solid red; padding: 10px;"> <p>► <b>IMPORTANT</b></p> <p>Note that if you forget the administrator password, it will be necessary to reset all the settings from the MultiPresenter's settings menu to restore the MultiPresenter Stick's settings to the factory defaults.</p> </div>
INFORMATION		Displays the MultiPresenter Stick's device information and network information.
FIRMWARE		Displays the MultiPresenter Stick's firmware version information. When the [START UPDATING] button in the lower right of the screen is clicked, it is possible to select the file with the latest firmware version that you have downloaded onto your computer and update the firmware to the new version.
RETURN/LOGOUT		Returns to the normal menu. [RETURN] is displayed if no menu password is set. [LOGOUT] is displayed if a menu password is set.
RESTART		When the [RESTART] button in the lower right of the screen is clicked, the MultiPresenter Stick is restarted. Restart the MultiPresenter Stick if its operation is unstable.

## 6. Setting the method of connecting to a wireless or wired LAN

### 6-1. Wireless LAN settings

To display the wireless LAN settings screen, select the [SETTINGS] tab on the web server screen, then select [ADMINISTRATOR MENU] → [NETWORK] → [WIRELESS LAN], in that order.



#### ● About profiles

The MultiPresenter Stick's wireless LAN function includes the three types of profiles described below.

Profile name	Description
<b>INTELLIGENT CONNECTION</b>	Easily connect with the MultiPresenter application installed on a computer or smartphone.
<b>INFRASTRUCTURE</b>	Connect the MultiPresenter Stick to an existing access point.
<b>SIMPLE ACCESS POINT</b>	Use the MultiPresenter Stick as a simple access point to connect computers or smartphones.

#### ► NOTE

- When set to [SIMPLE ACCESS POINT] or [INTELLIGENT CONNECTION], the MultiPresenter Stick's IP address is "192.168.120.1". The subnet mask is "255.255.255.0".
- When set to [SIMPLE ACCESS POINT] or [INTELLIGENT CONNECTION], up to 12 units can be connected simultaneously. Normally we recommend connecting up to about 8 units.

#### 6-1-1. INTELLIGENT CONNECTION setting items

Below we describe the setting items available when the [INTELLIGENT CONNECTION] profile is selected.

Menu item	Description
CHANNEL	Select the wireless channel. <ul style="list-style-type: none"><li>• When [AUTO] is selected, surrounding access point channels are searched for when reconnecting to the network, and the least used of the channels (1/6/11) is selected.</li><li>• This is set to [AUTO] upon shipment from the factory.</li></ul>
SECURITY TYPE	Select the security type (WPA2-PSK). <ul style="list-style-type: none"><li>• [SECURITY TYPE] can be selected when [PIN TYPE] is set to [STATIC] in the [MultiPresenter] settings.</li><li>• This is set to [DISABLED] upon shipment from the factory.</li></ul>
SECURITY KEY	Set the encryption key when [WPA2-PSK] is selected for [SECURITY TYPE]. <ul style="list-style-type: none"><li>• 8 to 63 letters, numbers or symbols</li></ul>
CONFIRM SECURITY KEY	For confirmation, input the security key again.

## 6-1-2. INFRASTRUCTURE setting items

Below we describe the setting items available when the [INFRASTRUCTURE] profile is selected.

Menu item	Description
DHCP/IP ADDRESS/SUBNET MASK/GATEWAY	Set these according to the instructions of your network administrator.
SITE SURVEY	<p>Use this to conduct a site survey and display the access points that were found.</p> <ul style="list-style-type: none"><li>• Up to 64 access points are displayed.</li><li>• If there are more than one access points with the same SSID, only one is displayed.</li><li>• The target access points are those whose security settings are either disabled, WPA2-PSK or WPA/WPA2-PSK.</li><li>• When the access point's security is enabled, this is indicated by a lock mark.</li></ul> <div><p><b>NOTE</b></p><ul style="list-style-type: none"><li>• Site survey cannot be selected when a wired network adapter is connected to the MultiPresenter Stick.</li></ul></div>
SSID	<p>Set the SSID.</p> <ul style="list-style-type: none"><li>• This is set to [NECDS] upon shipment from the factory.</li><li>• 1 to 32 letters, numbers or symbols</li></ul>
SECURITY TYPE	<p>Select the security type.</p> <p>[DISABLED]: Security is disabled.</p> <p>[WPA2-PSK]: The security key input field is displayed.</p> <p>[WPA/WPA2-PSK]: The security key input field is displayed.</p> <ul style="list-style-type: none"><li>• This is set to [DISABLED] upon shipment from the factory.</li><li>• The security key consists of 8 to 63 letters, numbers or symbols.</li></ul>
SECURITY KEY	<p>Set the encryption key when [WPA2-PSK] or [WPA/WPA2-PSK] is selected for [SECURITY TYPE].</p> <ul style="list-style-type: none"><li>• 8 to 63 letters, numbers or symbols</li></ul>
CONFIRM SECURITY KEY	For confirmation, input the security key again.

## 6-1-3. SIMPLE ACCESS POINT setting items

Below we describe the setting items available when the [SIMPLE ACCESS POINT] profile is selected.

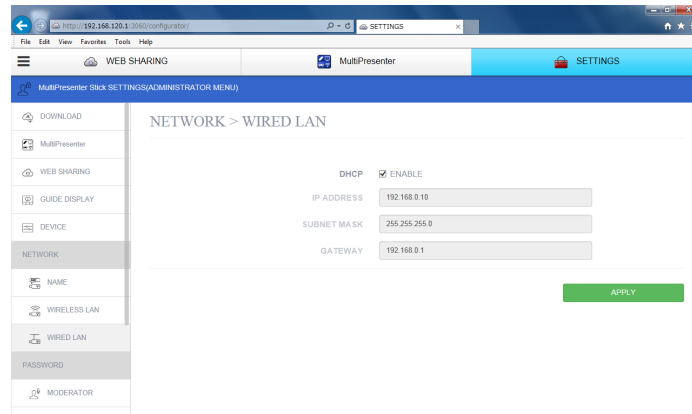
Menu item	Description
CHANNEL	<p>Select the wireless channel.</p> <ul style="list-style-type: none"><li>• When [AUTO] is selected, surrounding access point channels are searched for when re-connecting to the network, and the least used of the channels (1/6/11) is selected.</li><li>• This is set to [AUTO] upon shipment from the factory.</li></ul>
SSID	<p>Set the SSID.</p> <ul style="list-style-type: none"><li>• This is set to the MultiPresenter Stick's serial number upon shipment from the factory.</li><li>• 1 to 32 letters, numbers or symbols</li></ul>
SECURITY TYPE	<p>Select the security type (WPA2-PSK).</p> <ul style="list-style-type: none"><li>• This is set to [DISABLED] upon shipment from the factory.</li></ul>
SECURITY KEY	<p>Set the encryption key when [WPA2-PSK] is selected for [SECURITY TYPE].</p> <ul style="list-style-type: none"><li>• 8 to 63 letters, numbers or symbols</li></ul>
CONFIRM SECURITY KEY	For confirmation, input the security key again.

## 6-2. Wired LAN settings

To display the wired LAN settings screen, select the [SETTINGS] tab on the web server screen, then select [ADMINISTRATOR MENU] → [NETWORK] → [WIRED LAN], in that order.

### ► IMPORTANT

A commercially available wired network adapter (a product verified by NEC) must be purchased in order to connect the MultiPresenter Stick to a wired LAN.

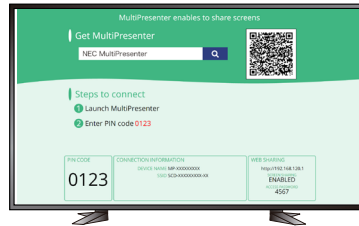


Menu item	Description
DHCP/IP ADDRESS/SUBNET MASK/GATEWAY	Set these according to the instructions of your network administrator.

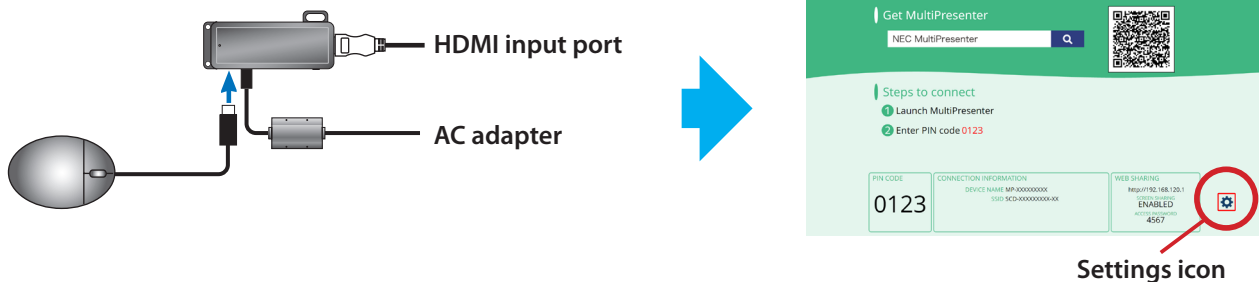
## 7. Displaying the MultiPresenter Stick's settings menu

The MultiPresenter Stick's settings menu can be displayed and the MultiPresenter Stick's settings can be changed.

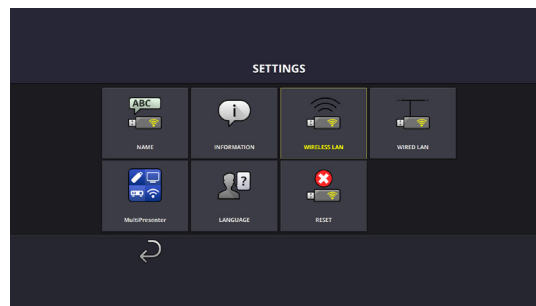
1. Display the MultiPresenter Stick's start-up menu.



2. Connect a commercially available USB mouse to the MultiPresenter Stick.  
The settings icon (⚙️) appears in the lower right of the start-up screen.



3. Operating the USB mouse, click the settings icon (⚙️).  
The MultiPresenter Stick's settings menu appears.



### ● Settings menu functions

#### ▶ NOTE

- The settings at [SETTINGS] on the web server screen and those in the MultiPresenter Stick's settings menu settings are reflected on one another. For this reason, there is no need to change both settings.

Menu item	Description	Related page
NAME	Set the MultiPresenter Stick's device name and host name.	27
INFORMATION	Display the information when the MultiPresenter Stick is connected to a wireless or wired LAN.	24
WIRELESS LAN	Make the settings for connecting the MultiPresenter Stick to a wireless LAN.	28
WIRED LAN	Make the settings for connecting the MultiPresenter Stick to a wired LAN.	30
MultiPresenter	Make the settings when the MultiPresenter application is connected to the MultiPresenter Stick.	26
LANGUAGE	Set the MultiPresenter Stick's display language.	27
RESET	Reset the MultiPresenter Stick's settings to the factory defaults.	—
(Return icon)	Return to the start-up screen.	—

## 8. Appendix

### 8-1. Troubleshooting

No.	Symptom	Check	Refer to page
1	It is not possible to connect to the MultiPresenter Stick from the MultiPresenter application.	Check that the power indicator on the MultiPresenter Stick is lit.	7
		Check that the wireless LAN function on the device you are using is enabled.	—
		When the MultiPresenter Stick's wireless LAN profile is set to [INTELLIGENT CONNECTION] or [SIMPLE ACCESS POINT], select the MultiPresenter Stick's SSID.	13 14
		When set to the Infrastructure mode, select the SSID of the wireless LAN access point to which the MultiPresenter Stick is connected.	13 14
		When a wired network adapter is connected to the MultiPresenter Stick, the wired LAN connection has priority.	30
		Network communications may be limited by the firewall function of the OS or security software. In this case, make the necessary settings to allow communications with the MultiPresenter application.	—
2	Communications between the MultiPresenter application and MultiPresenter Stick are unstable. Communications are interrupted during use.	To use under good wireless LAN conditions, move the MultiPresenter Stick to a position in which the signals reach it properly. It may be difficult to receive the signals if there are obstacles between the device you are using and the MultiPresenter Stick.	—
		Do not put metal objects into direct contact with the MultiPresenter Stick. Doing so will adversely affect antenna sensitivity. Keep metal objects at least 3 mm away from the MultiPresenter Stick.	—
3	The power indicator on the MultiPresenter Stick does not light.	Plug the AC adapter securely into the MultiPresenter Stick.	8
		If the AC adapter is connected to a power tap with an on/off function, check that the power tap's switch is turned on.	—
4	The MultiPresenter Stick's start-up screen is not displayed on the image display device.	Check that the image cable is properly connected.	8
		Check that the power of both the MultiPresenter Stick and the image display device is turned on and that the input port to which the MultiPresenter Stick is connected is selected on the image display device.	8
5	Images are not displayed in full screen. The image's aspect ratio is off.	Check whether the connected image display device is compatible with the resolutions supported by the MultiPresenter Stick and check the image display device's screen settings.	27
		The resolution can also be specified at the [OUTPUT RESOLUTION] item under [SETTINGS] → [ADMINISTRATOR MENU] → [DEVICE] on the MultiPresenter Stick's web server screen.	27
		Turn on the power of the image display device before connecting the AC adapter to the MultiPresenter Stick. When the AC adapter is connected, the MultiPresenter Stick's power turns on automatically.	8

\* Continued on next page.



No.	Symptom	Check	Refer to page
6	Images are sometimes interrupted or displayed with a delay.	As far as possible, set the MultiPresenter Stick in a position in which it is visible from the device from which images are being sent. Also try moving the device from which images are being sent closer and changing the direction of the antenna.	–
		Such symptoms can occur happen if the network is busy.	–
		Select the optimum channel at [CHANNEL] under [SETTINGS] → [ADMINISTRATOR MENU] → [WIRELESS LAN] on the MultiPresenter Stick's web server screen.	28 29
7	Videos do not play smoothly.	From the MultiPresenter application on the device from which the video is being sent, select [SETTINGS] → [IMAGE], then lower the [PICTURE QUALITY] and [MAXIMUM FRAME RATE] values. Note that depending on the OS you are using, the [MAXIMUM FRAME RATE] item may not be displayed. Also, depending on the your wireless LAN environment, it may not be possible to achieve good performance.	–
8	You would like to restore the MultiPresenter Stick's settings to the factory defaults.	Display the MultiPresenter Stick's settings menu and select [RESET].	31
9	You would like to limit access to web share images.	Set the [ACCESS PASSWORD] item under [SETTINGS] → [ADMINISTRATOR MENU] → [WEB SHARING] on the MultiPresenter Stick's web server screen.	26
10	You would like to limit access to the administrator menu on the web server screen.	Set the [ADMINISTRATOR] item under [SETTINGS] → [ADMINISTRATOR MENU] → [PASSWORD] on the MultiPresenter Stick's web server screen.	27

## 8-2. Frequently asked questions

No.	Question	Answer															
1	Is it possible to play the audio along with the video?	Yes, if you use the Windows version of the MultiPresenter application. Note that sound is only played when the image is displayed in full screen.															
2	Is it possible to use the MultiPresenter Stick at the same time as the Internet?	Access to the Internet is possible when the MultiPresenter Stick is connected to an existing network that is connected to the Internet. When connecting the MultiPresenter Stick to an existing network by wireless LAN, use the Infrastructure mode.															
3	Is it possible to connect the MultiPresenter Stick to a company's internal wireless LAN?	The MultiPresenter Stick supports IEEE 802.11b/g/n 2.4GHz and WPA/WPA2-PSK. Connection is possible if the wireless LAN network allows connection with these standards. Note that 5GHz, WPA/WPA2-EAP (environment requiring authentication) and wireless LAN environments requiring an authentication procedure using a web browser are not supported.															
4	What protocols and port numbers does the MultiPresenter Stick use?	<p>The MultiPresenter Stick uses the protocols and port numbers shown below.</p> <table> <tr> <th>Features</th><th>Protocol</th><th>Port #</th></tr> <tr> <td>Image Transmission</td><td>TCP</td><td>8322</td></tr> <tr> <td>Projector Search</td><td>UDP</td><td>5320</td></tr> <tr> <td>PC Control</td><td>TCP</td><td>7142</td></tr> <tr> <td>HTTP Server</td><td>HTTP</td><td>80</td></tr> </table>	Features	Protocol	Port #	Image Transmission	TCP	8322	Projector Search	UDP	5320	PC Control	TCP	7142	HTTP Server	HTTP	80
Features	Protocol	Port #															
Image Transmission	TCP	8322															
Projector Search	UDP	5320															
PC Control	TCP	7142															
HTTP Server	HTTP	80															
5	What encryption technology is used when transmitting images?	The transmitted data is encrypted in AES. For wireless communications, security is ensured by WPA/WPA2-PSK.															
6	What is the communication traffic volume when using Wi-Fi?	<p>The communication traffic volume when using the MultiPresenter Stick is not fixed. It changes constantly according to the image resolution and changes in the image.</p> <p>Below are some approximate values with good signal conditions.</p> <p>Network transmission quantity: [Min. 50kbps*1 × no. transmitting devices connected] to [Max. approx. 40Mbps*2]</p> <p>*1 With no changes on the screen of the transmitting device</p> <p>*2 With Full HD resolution and the screen changing constantly (However, the approximate maximum value will be lower than this depending on the quality and frame rate settings on the transmitting side as well as the device's performance and resolution.)</p>															
7	Can images be transferred simultaneously to multiple MultiPresenter Sticks?	There are no limits by design, but the number of devices to which images can be transferred simultaneously depends on your usage environment. NEC recommends using a maximum of 4 MultiPresenter Sticks. The number of MultiPresenter Sticks that can be used may be lower than this when sending videos.															
8	Does the MultiPresenter Stick or the MultiPresenter application ever automatically send data to external servers?	The MultiPresenter application only communicates with external servers to check for the latest version. Otherwise data is never sent externally.															
9	Is it possible to operate the MultiPresenter Stick for 24 hours continuously?	As long as the environmental temperature is within the specified operating temperature range (0 to 40°C/32 to 104°F), there is no problem operating the MultiPresenter Stick for 24 hours continuously. To use it for longer, please turn the power off then restart the MultiPresenter Stick as necessary.															

\* Continued on next page.

No.	Question	Answer
10	Are shared files sent from a web browser to the MultiPresenter Stick using the web sharing function saved as such?	<p>The shared files are automatically deleted when all the web sharing devices are disconnected. (by default)</p> <p>This auto deletion function can be disabled at the [AUTO DELETE] item under [SETTINGS] → [ADMINISTRATOR MENU] → [WEB SHARING] on the web server screen.</p> <p>However, the shared files are deleted when the MultiPresenter Stick's power is turned off.</p>
11	What is the volume of files that can be shared via the MultiPresenter Stick with the web sharing function?	<p>A total of 200 MB for all files can be saved.</p> <p>There are no restrictions to the file types.</p>

## 8-3. Updating the firmware version

The MultiPresenter Stick's firmware version can be updated to the latest version by selecting [ADMINISTRATOR MENU] → [FIRMWARE] on the web server screen.

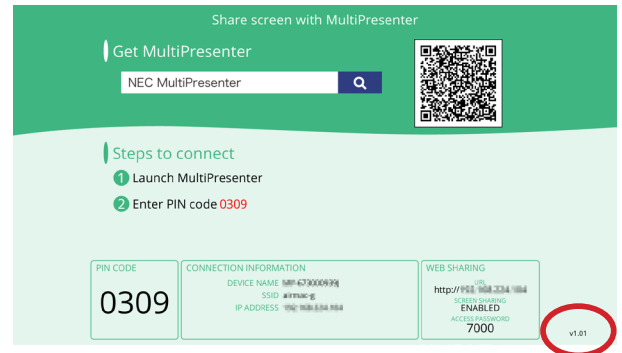
### ▶ IMPORTANT

- Do not turn off the power of the MultiPresenter Stick or the computer you are using while the firmware is being updated.
- Do not refresh the page on your web browser's computer while the firmware is being updated.

1. Check the MultiPresenter Stick's firmware version number. The version number is displayed in the lower right of the MultiPresenter Stick's start-up screen.

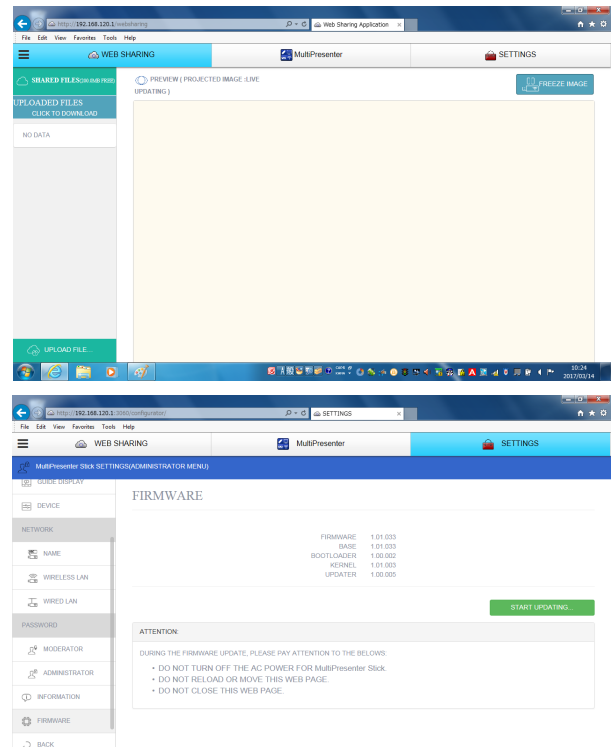
### ▶ NOTE

- For firmware version numbers early than "1.01", the version number is not display on the start-up screen.



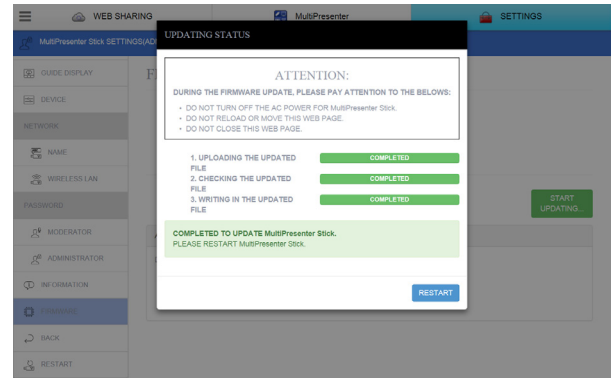
2. Use a web browser on a computer to access the NEC download page.
  - URL: <http://www.nec-display.com/dl/en/soft/multipresenter/mp10rx/eula.html>
3. On the download page, check whether the MultiPresenter Stick's firmware has been updated.
4. If the firmware has been updated, save the firmware update file (e.g.: DS1-MP10RX\_FIRM\_Vxxxxxx.BIN) to any folder on your computer.
5. Connect your computer to the MultiPresenter Stick over the network and display the web server screen.

6. Select the [SETTINGS] tab → [ADMINISTRATOR MENU] → [FIRMWARE].  
A screen for updating the firmware is displayed.



7. Click [START UPDATING...] in the lower right of the firmware screen.  
The firmware select window is displayed.

8. Select the update file saved in step 4.  
Once the update is completed successfully, the screen at the right is displayed.
9. Click the [RESTART] button.



10. When the start-up screen is displayed after restarting, check the version number in the lower right of the screen.

**NOTE**

If an error occurs during updating, one of the error codes below is displayed.

Error code	Description
0100000001	File is too large. Check whether you have selected the wrong update file in the file dialog.
0100000002	File extension is wrong. Check whether you have selected the wrong update file in the file dialog.
0200000001 0200000002	File is damaged. Re-download the update file.
0100000003 0200000003 0300000006	Session has been closed. Reconnect the MultiPresenter Stick and computer and perform the software update procedure again.
0100000004 0200000004 0300000007	No response. Reconnect the MultiPresenter Stick and computer and perform the software update procedure again.

If an error code other than the ones above is displayed, contact your dealer.

## Index

### A

AC adapter ..... 6, 8  
 ACCESS PASSWORD ..... 25, 26  
 access point ..... 8, 10, 28, 29  
 ADMINISTRATOR MENU ..... 24, 26  
 Android ..... 4, 12, 13  
 App Store ..... 12  
 AUTO DELETE ..... 25, 26

### B

BACKGROUND ..... 25, 26  
 Browse Server ..... 18

### C

CHANNEL ..... 28, 29  
 COMMUNICATION SPEED LIMIT ..... 26

### D

DC IN jack ..... 7  
 DELETE SHARED FILES. . . . . 25, 26  
 DHCP ..... 27, 29, 30  
 DISPLAY INFO ..... 23  
 DOWNLOAD ..... 12, 20, 24, 25, 26, 36

### E

encryption technology ..... 34  
 error codes ..... 37  
 exhaust vent ..... 7  
 existing network environment ..... 9

### F

firewall ..... 32  
 FIRMWARE ..... 27, 36  
 focus ..... 23  
 Free Mode ..... 5, 21, 25, 26

### G

GATEWAY ..... 29, 30  
 Google Chrome ..... 5  
 Google Play ..... 12  
 GUIDE DISPLAY ..... 25, 26

### H

HDMI extension cable ..... 6, 8  
 HDMI output port ..... 7

### I

INFRASTRUCTURE ..... 9, 10, 13, 14, 28, 29  
 initial settings ..... 8, 9, 12  
 INTELLIGENT CONNECTION ..... 5, 9, 10, 12, 13, 28  
 Internet Explorer ..... 5  
 iOS ..... 4, 12, 13, 14  
 IP ADDRESS ..... 29, 30

### L

LANGUAGE ..... 10, 12, 27, 31  
 language selection menu ..... 10, 12  
 list of devices ..... 23  
 LOGOUT ..... 25, 27

### M

Managed Mode ..... 5, 21, 25, 26  
 maximize screen ..... 23  
 MAXIMUM FRAME RATE ..... 33  
 memo creation screen ..... 19, 20  
 microSD card slot ..... 7  
 Microsoft Edge ..... 5  
 MODE ..... 5, 21, 25, 26  
 MODERATOR MENU ..... 24, 25  
 Multiple (MultiPresenter application) ..... 15  
 MultiPresenter ..... 5, 17, 18, 21, 25, 26  
 MultiPresenter application ..... 4, 12, 13, 14, 18, 24, 25, 26  
 MultiPresenter Stick ..... 6, 31

## N

NAME .....	27, 31
network.....	4, 5, 9, 16, 17, 28, 30
NEXT .....	23
Normal menu .....	24

## O

ONE-TIME.....	26
OPEN SOURCE LICENSE.....	24
OUTPUT RESOLUTION.....	27

## P

PASSWORD .....	10, 25, 26, 27
Picture Quality .....	33
PIN CODE .....	5, 13, 14, 15, 26
PIN TYPE.....	26, 28
power button.....	7
power Indicator .....	7
PREV .....	23
PROFILE.....	28, 29
property.....	16
protocols and port numbers .....	34

## R

RESET .....	27, 31
RESET ALL SETTINGS TO THE FACTORY SETTINGS.....	31
RESTART .....	25, 27

## S

Safari .....	5, 17
"SAVE AS HTML" function.....	19, 20
SCREEN SHARING .....	25, 26
security hanger .....	7
SECURITY KEY .....	10, 16, 17, 28, 29
SECURITY TYPE .....	28, 29
Select (MultiPresenter application) .....	15
SETTINGS .....	5, 9, 17, 18, 24, 31
SHARED FILES .....	20, 25, 26
SIMPLE ACCESS POINT.....	13, 14, 28, 29
SITE SURVEY .....	10, 29
split panel display screen .....	22
SPLIT PATTERN.....	22, 23

SSID .....	8, 10, 11, 16, 17, 29
start-up screen .....	11, 12, 31, 36
STATIC .....	26, 28
strap hole .....	7
SUBNET MASK.....	28, 29, 30

## T

target device .....	13, 14, 15, 18
thumbnail gallery .....	23

## U

UPDATE IMAGE.....	20, 23
UPLOADED.....	5, 19, 20
URL.....	8, 10, 11
USB mouse.....	7, 9, 12, 31
USB port.....	7, 12
UTILIZE PIN CODE AS CONNECTION PASSWORD.....	26

## W

WEB CAPTURE.....	19
WEB CONTROL PASSWORD .....	25, 26
WEB server function .....	5, 16
WEB SHARING .....	5, 17, 18, 19, 25, 26
Wi-Fi.....	14, 17
Wired LAN .....	2, 27, 28, 30, 31
Wired network adapter .....	2, 4, 7, 30
Wireless LAN.....	27, 28, 31
Wireless network .....	10, 16